

# PRODUCTS

# SPX FLOW

## Bolting Systems™



Torque Wrenches



Torque Wrenches



Tensioners



Subsea tools



Pneumatic Pump



Electric Pump



Hydraulic Spreader



## INQUIRY FORM

Company Name: \_\_\_\_\_  
 Address: \_\_\_\_\_  
 Name: \_\_\_\_\_ Position: \_\_\_\_\_  
 Department \_\_\_\_\_ Tel #: \_\_\_\_\_ Mobile #: \_\_\_\_\_  
 Fax #: \_\_\_\_\_ Email Add: \_\_\_\_\_

### OTHER CONTACT PERSON

	Name	Position	Department	Mobile #:	Email Add
1.	_____	_____	_____	_____	_____
2.	_____	_____	_____	_____	_____
3.	_____	_____	_____	_____	_____

In Order to help you specify and request a quotation for SPX FLOW product, we have provided a checklist/questionnaire below requesting the outline information, we need to provide you with a detailed offer.

### PLEASE FILL UP YOUR INTEREST:

**REQUIRED PUMP:**     Torque     Tension

Electric

Air

Engine Driven

Manual Pump

**REQUIRED HOSE LENGTH:**

15ft - 3m     20ft - 6m     50ft - 10m

**TENSIONER**

Bolt Diameter : \_\_\_\_\_ Qty. \_\_\_\_\_

Hex Nut A/F : \_\_\_\_\_

Bolt Pitch : \_\_\_\_\_

Grade : \_\_\_\_\_

Application : \_\_\_\_\_

**TORQUE WRENCH**

Application : \_\_\_\_\_ Qty. \_\_\_\_\_

Bolt Diameter : \_\_\_\_\_

Bolt Pitch : \_\_\_\_\_

No. of Bolts : \_\_\_\_\_

Bolt Material : \_\_\_\_\_

Bolt Grade : \_\_\_\_\_

Lubricant : \_\_\_\_\_

Torque Required : \_\_\_\_\_ Nm. \_\_\_\_\_ ft.lbs.

Head Bolt     Hex Nut

Hex Nut Size A/F: \_\_\_\_\_ mm. \_\_\_\_\_ in.

Nut Material : \_\_\_\_\_

Nut Grade : \_\_\_\_\_

**HYDRAULIC SPREADER**

Flange Type : \_\_\_\_\_ Qty. \_\_\_\_\_

Minimum Clearance : \_\_\_\_\_

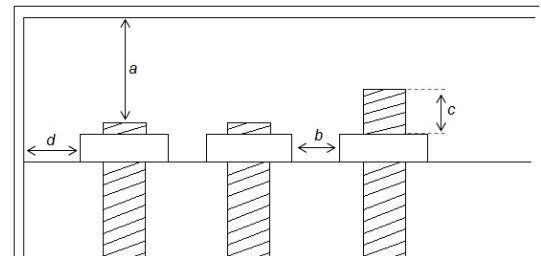
Spreads : \_\_\_\_\_

**FLANGE PULLERS**

Bolt Diameter : \_\_\_\_\_

Hex Nut Size : \_\_\_\_\_

Flange Hole Diameter: \_\_\_\_\_



**DIMENSION ON UNITS**

A. \_\_\_\_\_ mm \_\_\_\_\_ in    C. \_\_\_\_\_ mm \_\_\_\_\_ in

B. \_\_\_\_\_ mm \_\_\_\_\_ in    D. \_\_\_\_\_ mm \_\_\_\_\_ in

**LEGEND:**

A. Overhead Distance    C. Protruded Stud Length

B. Nut to Nut Distance    D. Side Clearance

**NUT SPLITTER**

Hex Nut Size : \_\_\_\_\_ Qty. \_\_\_\_\_

Grade : \_\_\_\_\_

Material : \_\_\_\_\_

Quantity : \_\_\_\_\_



Main Office : #2T. Cruz St. Cruzville, Zabarte Rd. Novaliches  
 Quezon City, Metro Manila, Philippines 1124  
 Tel. : (+63 2) 3-417-4333 • 3-417-5435 • 3-418 -7079  
 3-419 -9138 • 3-419 -9166  
 FAX : (+63 2) 8-930-5499 • 7-729-3471  
 Facebook : www.facebook.com/hytecpowerincorporated  
 Website : www.hytecpower.net

**Engr. Eric Jude S. Soliman**  
 President / CEO  
 Mobile# : (+63) 917-531-1624 / 922-866-2801  
 939-907-0620  
 Tel # : (+63 2) 7-975-2142 (Direct Line)  
 E-mail : ejssoliman@hytecpower.com