



INDUSTRIAL TOOLS & SOLUTIONS

TOOL SOLUTIONS

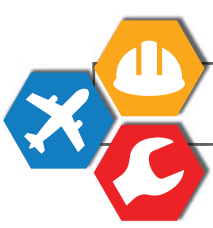
FOR EVERY INDUSTRY



PNEUMATIC
TORQUE WRENCHES

PNEUMATIC
IMPACT
WRENCH

SPECIALTY
ALL-WEATHER
SERVICE SETS



SNAP-ON ATC LEVEL 5 & TOOL STORAGE



POWERED TOOL STORAGE

Nearly infinite expansion options mean our tool storage systems can grow with you as your career grows. Uncompromising build quality means it'll last your entire career and beyond.



MOBILE STORAGE

From roll cabs to carts, Snap-on® tool storage goes where you go. Smoothly and easily.



INPULSE™ DRAWERS

Flush finish drawers that open easier, close smoother and don't drift open.



LOCK'N ROLL® DRAWERS

Our special retention system keeps drawers securely in place to prevent accidental openings.



STRUCTURAL CONTINUITY

Our special process for welding and bonding the corner gussets of each roll cab provides greater overall strength.



DOUBLE WALL CONSTRUCTION

Guards against faulty drawer operation caused by dents and dings.



HIGH-END PAINT

An ultra-tough powder coat process provides impressive finishes in a variety of colors.

CLASSIC SERIES

TOP: Heavy Duty
Bottom: Heavy Duty
Load Capacity: 1089kg - 1095kg
Size: 16,000 in³ - 33,000 in³

MASTER SERIES

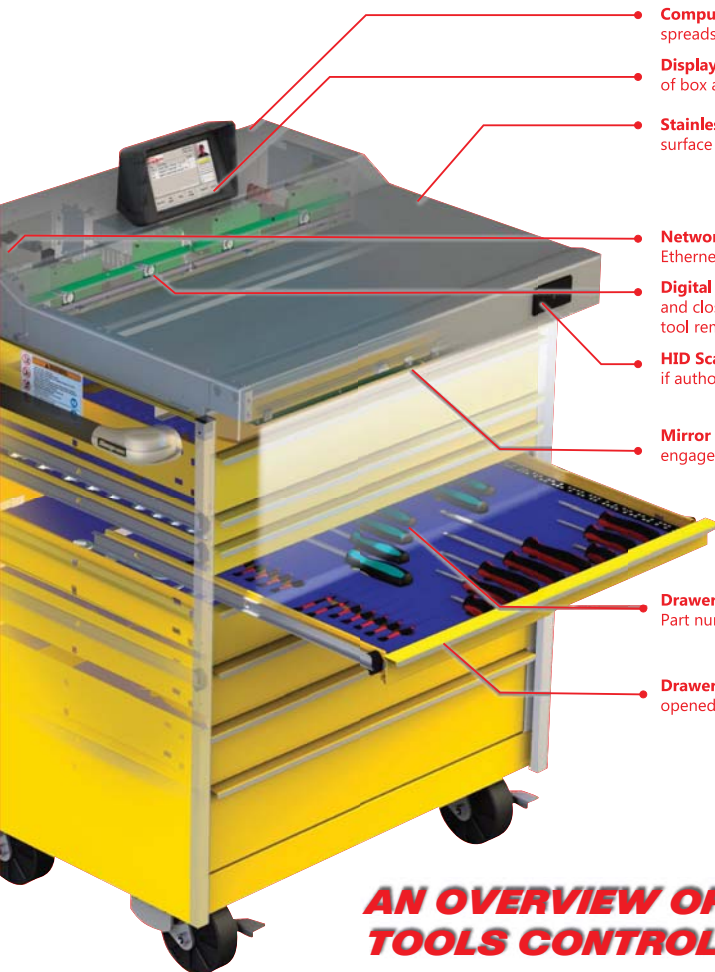
TOP: Extra Heavy Duty
Bottom: Extra Heavy Duty
Load Capacity: 3084kg
Size: 38,916 in³ - 46,425 in³

HERITAGE SERIES

TOP: Medium Duty
Bottom: Heavy Duty w/ Skid Support System
Load Capacity: 499kg - 1089kg
Size: 10,000 in³ - 20,000 in³

MOBILE SOLUTION ROLL CARTS

KRSC246 Series
LOAD CAPACITY: 1,089kg
LID CAPACITY: 68kg
SIZE: 21,979 in³



- Computer** Stores audit information both in spreadsheet and digital images.
- Display** Allows user log-in; indicates tools out of box and provides audit trail
- Stainless Steel Work Surface** Fully-functional top surface work area
- Network Connections** Connects to a wireless or Ethernet network
- Digital Scanner** Scans each drawer as it is opened and closed; stores and compares images to track tool removal and replacement
- HID Scanner** User scanner HID badge; if authorised, the box unlocks
- Mirror and Light System** Lights automatically engage when toolbox is unlocked
- Drawer** Custom layout foam insert organises tools. Part number in cavity aids correct replacement
- Drawer Control Safety** Only one drawer can be opened at a time to avoid tip-over



Level 5 Tools Control Solution are networked, either wirelessly or by Ethernet and managed by powerful, easy-to-use software. The administrator can view all the boxes on the network, whether they are on or off-line, and the status of each box - including the number of tools issued, the active users, and all history.

System alerts - sending email or text messages to supervisors, for example, can be customised for lost or broken tools or calibration requirements.

Custom reports can be created on each tool's frequency of use, inspection and calibration dates, and other specific location requirements.

AN OVERVIEW OF SNAP-ON'S TOOLS CONTROL SOLUTION

LEVEL 1 – ORGANIZATION

A complete tool audit by your Snap-on Industrial tool and tool control expert helps define your tool and tool control requirements. Consider a new tool storage unit to increase productivity in your workspace.

LEVEL 2 – VISIBILITY

Making tools easier to see reduces tool selection time and increases accountability for their return. High visibility tool handle colors, custom color foam inserts, toolbox organizers and pegboard, can raise the visual profile of tools as they are used.

LEVEL 3 – ACCESS CONTROL

Effective tool control relies on ensuring that your teams have access to just the tools they need, when and where they need them. Snapon's software manages access at the individual user level, and allows either stand-alone or networked control.

LEVEL 4 – ASSET MANAGEMENT

Merging the benefits of speed, accuracy, and cost-effectiveness are the goals of tool control at an organizational level. You benefit from less paperwork and easier inventory processes.

LEVEL 5 – AUTOMATION

Let your toolbox handle the control and tracking automatically, through digital optical scans of your tools every time a drawer is accessed. software provides immediate tracking and audit trails of tools used, by part and user.

WANT TO KNOW WHERE YOUR TOOLS ARE? ASK YOUR TOOL BOX.



POWERED TOOLS

14.4 Volt Battery Charger



Cordless Screwdriver

No. CTSEU725

1/4" Hex Drive Slide on battery screw driver
2.0A-h



Cordless Ratchet

No. CTR761CK2

3/8" Drive Micro-Lithium 40ft-lb – 158 ft torque output Digital variable-speed trigger for precise control



Cordless Impact

No. CDR4450

1/2" Drive 18V Impact Wrench
Available also in: 3/8"



Temp Gun

No. CTG761

Range: - 58 to 1,832 deg F
Dual Laser Pointer
Accuracy: +/- 3 degrees F



Cordless Drill

No. CDR4450

22 position clutch dials
Dual rail slide-on battery
Self-aligning terminal block

High Visibility Air and Cordless Tools

Hi-Vis Tools



Air Tools

Stock No.	Description
MG725HV	1/2" Impact
MG325HV	3/8" Impact
PH3050BHV	Air Hammer

- High-visibility yellow makes it easy to locate tools
- Reduces the likelihood of techs leaving tools behind in low-lights settings
- Reduces lost tools and lost time while increasing safety

Cordless Tools

Stock No.	Description
CT8850HV	18V 1/2" Impact
CT8810AHV	18V 3/8" Impact
CDR8815HV	18V Compact Drill
CTL8850HV	18V Compact Floodlight
CTLED8850HV	18V Worklight
CT761HV	14.4V impact
CTR7618HV	14.4V 3/8" Ratchet
CTR714AHV	14.4V 1/4" Ratchet
CTRS761AHV	14.4V Recip Saw
CTS761HV	14.4V Screwdriver
CDR761AHV	Cordless Drill
CTPP761AHV	14.4V Polish Prep Tool
CTL761HV	14.4V Worklight
CTLU761HV	14.4V Utility Light
CTLUH761HV	14.4V Underhood Light

Air Tools



PT850HV – 1/2" Impact

18V Cordless



CDR8815HV – 3/8" Drill

14.4V Cordless



CTR7618HV & CTR714AHV – 3/8" & 1/4" Ratchets

IMPACT WRENCHES & AIR TOOLS

MG325 1/2" Drive Air Impact Wrench



Features:

- 1,190 ft-lb of bolt breakaway torque
- 1,270 BPM
- 9,200 RPM free speed
- One-handed forward/reverse bar
- Large dial-type regulator knob
- Forged aircraft-grade 7050 aluminum nose
- Forged anvil, frame and hammers for a long tool life
- 810 ft-lb of torque

PDR2500 Snap-on 1/4" Micro Reversible Air Drills



Features:

- Great accessibility when working in confine spaces
- One-handed forward/reverse
- Ideal for mounting brackets, manifolds, gas tanks, body panels, rivets, sheet metal, muffler hangers and many other applications where larger drills will not fit.
- With slow start-up and variable speed trigger for better control

PSO4625 6" Orbital Sander



Features:

- Low-vibration sander for less user fatigue
- Kevlar® vanes last longer and help reduce moisture and oil on the work area
- O-ring-sealed motor keeps dust and debris from entering critical components
- Powerful .25 HP motor generates 12,000 RPM for plenty of power
- Multi-position speed regulator

MG325 1/2" Drive Air Impact Wrench



Features:

- Lightweight and comfort grip handle for less user fatigue
- Powerful thermally balanced air motor cools internal parts and tool surface
- Double bearings for smooth operation
- Built-in speed regulator for easy adjustment
- Rear-diffused exhaust directs exhaust away from work area durability
- Adjustable wheel guard so tool can be used at any angle

HEAVY-DUTY PNEUMATIC IMPACT WRENCHES

DURABILITY, POWER AND COMFORT

- Precision machined air motors efficiently transfer torque to the impact mechanism for hard hitting blows.
- Precision machined housing ensure proper alignment of internal components.
- Sealed impact mechanism is lubricated with Red Line Synthetic Racing Oil™ for maximum tool life.
- Lightweight balanced magnesium housing, comfortable triggers and cushion grip handle minimize vibration, while maximizing control and reduced user fatigue.



FLEET MAINTENANCE

CREEPERS



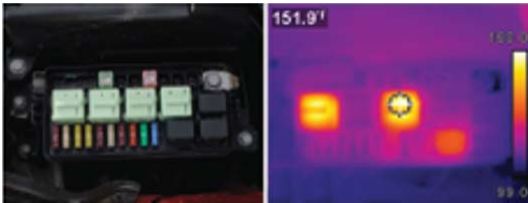
TESTING AND DIAGNOSTICS



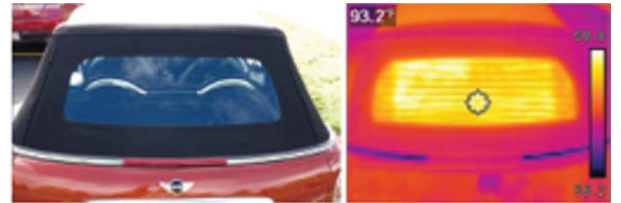
EETH300 DIAGNOSTIC THERMAL IMAGER

- Uses infrared imaging technology to reveal heat from friction, electrical resistance, pressure changes and more.
- Temperature range: -20 to 450 deg C
- Detect problems all around the vehicle: brakes, heated seats, misfires, HVAC, worn bearings, belts, emission controls and many more
- Color reference scale automatically calibrates, so you know the temperature of everything in the image

Applications

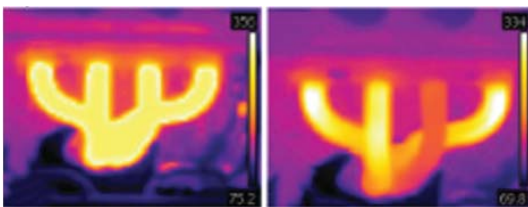


Detect current flow, resistance and parasitic loads

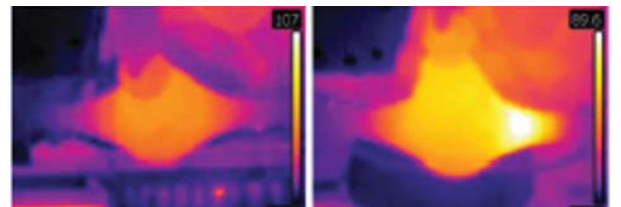


Find hard to detect breaks in window defoggers

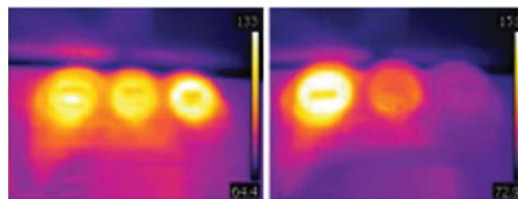
Exclusive Expert Database provides guided tests and reference images showing good versus failed components for specific automotive applications



Cylinder misfire detected at exhaust manifold



Worn axle bearing at differential



Detect restricted AC, heat vent and blend door issues

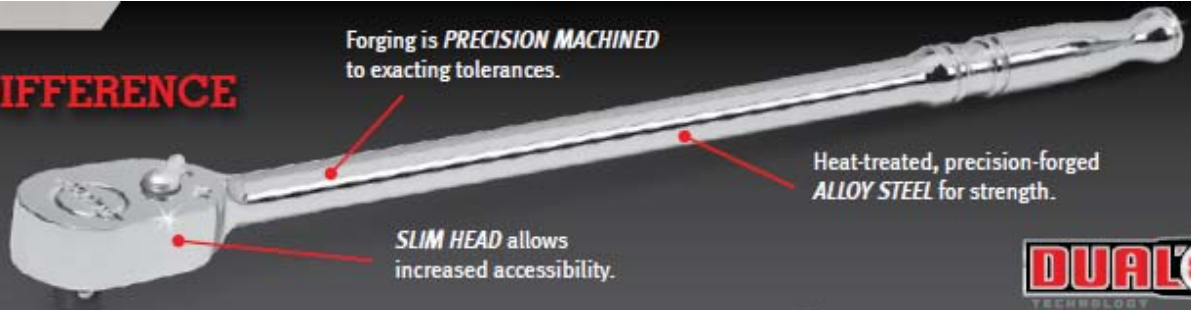


DUAL 80® TECHNOLOGY

An exclusive Snap-on® advantage, Dual 80® Technology features dual pawls and up to an 80-tooth gear for a smaller ratcheting arc and more power in less lateral space.

THE DUAL 80® DIFFERENCE

Snap-on's RATCHETS & SOCKETS together have the lowest height of any product on the market, allowing you to access to areas our competitor's won't.



Forging is *PRECISION MACHINED* to exacting tolerances.

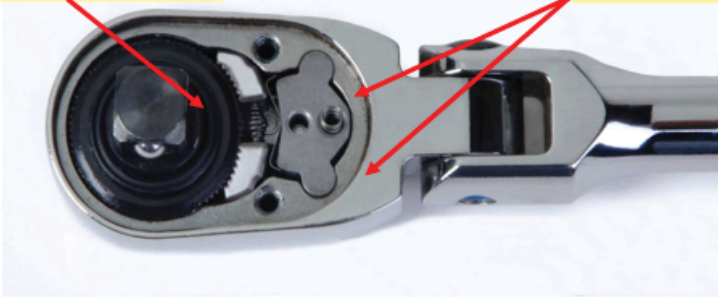
Heat-treated, precision-forged *ALLOY STEEL* for strength.

SLIM HEAD allows increased accessibility.



80 Tooth Gear

Dual Pawls



Low Ratcheting Torque



THUS THE NAME, DUAL 80.

3/8" 1/2" 3/4" 1" 1 1/2" 2 1/2" DRIVES

Dual 80® Technology Ratchets



FLL80



FLF80A

Stop. Turn and Listen. A smoother, stronger ratchet.

Try them to believe them.

Dual 80® Technology Ratchets Feature:

- 80-tooth gear
- Seven teeth in contact with gear to provide strength and durability

Dual 80® Technology Soft Grip Handle, chrome (3/8")



FHFL80A



FHLL80

3/8" Drive Dual 80® Technology Standard Red Soft Grip Handle Flex-Head Ratchet

Ratchet Features:

- Compact head design offers greater accessibility
- Swivel head ratchets provide a variety of ratcheting positions

Dual 80® Technology Compact Head (3/8")



FCF72



FC72

Ratchet Features:

- Compact head design offers greater accessibility
- Swivel head ratchets provide a variety of ratcheting positions

Quick Release Ratchets (3/8")



FRLL80



FRX80A



FHR80

3/8" Drive Dual 80® Technology Standard Red Soft Grip Handle Quick-Release Ratchet

- 80-tooth gear for 4.5° of swing arc
- Seven teeth in contact with gear to provide strength and durability
- Quick-release has a positive locking feature to hold socket securely in place when needed and push button for easy removal
- Sealed head keeps dirt and other contaminants out of the head mechanism
- Contoured handle for comfort and control

(pls. refer to SNAP ON CATALOG 1400 for specific model and sizes)

Round Head, chrome (3/8")



FNF100



FHCNF72

Round Head Ratchets

The Snap-on® Round Head features up to 100 teeth to achieve the lowest possible swing arc. Slim, round head ratchets are perfect for the tightest of space constraints.

FOD Ratchets (Foreign Object Damage) (3/8")



F80FOD



GF80FOD



GFL80FOD

- Aviation and other critical applications where Foreign Object Damage prevention is crucial for success
- Designed to have the lowest profile and work with the shortest swing arc, providing better access to restricted areas

Low Profile Ratchets (3/8")



RAF80

- Dial 80® Technology Low-Profile Ratchet
- Square drive design works with low-profile sockets to access restricted clearance without loss of strength
 - Use with standard 3/8" drive sockets or other attachments

HI-LOK® Fastener Ratchets (3/8")



FCY72

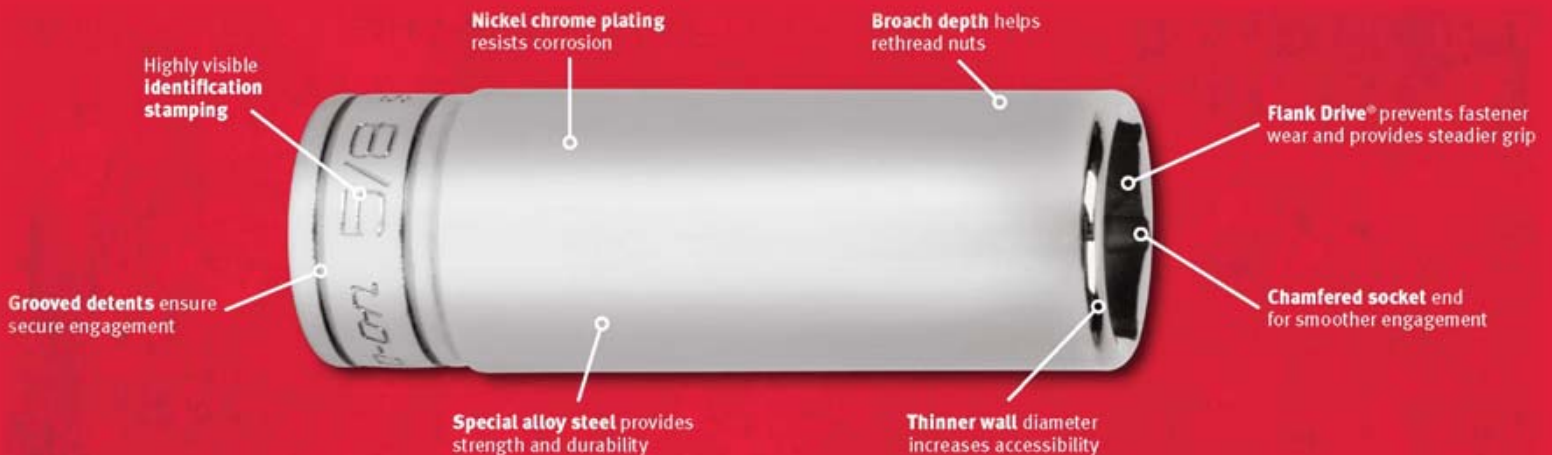
3/8" Drive Dual 80® Technology Hi-Lok® Compact Head Ratchet

- Compact Head Hi-Lok® Ratchet
- Snap-on® ratchets are put through rigorous testing to perform in the real world and provide trouble-free performance that stands the test of time
- Snap-on® ratchets are designed to have the lowest profile and work with the shortest swing arc, providing better access to restricted areas



FLANK DRIVE® WRENCHING SYSTEM

Our Flank Drive® Wrenching System contacts the fastener flats to add up to 15 – 20% more torque, while also preventing the rounding of fasteners.



Hand Sockets



Power Sockets



Impact Sockets



FLANK DRIVE® PLUS

Providing more flat-to-flat contact with fasteners, this feature delivers far more turning power than conventional open-end and box-end wrenches.

...THAT MAKES THE PERFECT COMBINATION WRENCH.



FLANK DRIVE® PLUS REVERSIBLE RATCHETING COMBINATION

Ratcheting Combination, Standard Handle, 15° Offset, mm

- Patented, ratcheting mechanism utilizes Snap-on® Dual 80® technology; combining dual pawls with a thin-walled, box-end design for smooth operation and more torque transfer in less lateral space
- 12-point ratcheting gear is cold-formed and features the Flank Drive® wrenching configuration, the proven design for turning fasteners
- Open end features patented Flank Drive® Plus wrenching configuration that delivers up to 62% more turning power than conventional wrenches
- Up to 80-gear teeth requires minimal movement in tight areas
- 15° offset of box-end for maximum knuckle clearance



FLANK DRIVE® RATCHETING COMBINATION

- Patented open end speed wrenching configuration delivers more speed than conventional wrenches

- Speed open end provides quick, ratchet like action
- Flank Drive® wrenching system on box end provides up to 15 to 20% more turning power with less risk of tool or fastener damage
- Manufactured from special alloy steel, precision forged and heat treated for optimum strength and durability
- Up to 80 gear teeth for minimal movement in tight areas
- Box ends are offset 15° for clearance
- Sized for optimum comfort and balance
- Nickel-chrome plating helps protect against corrosion and makes it easy to wipe clean

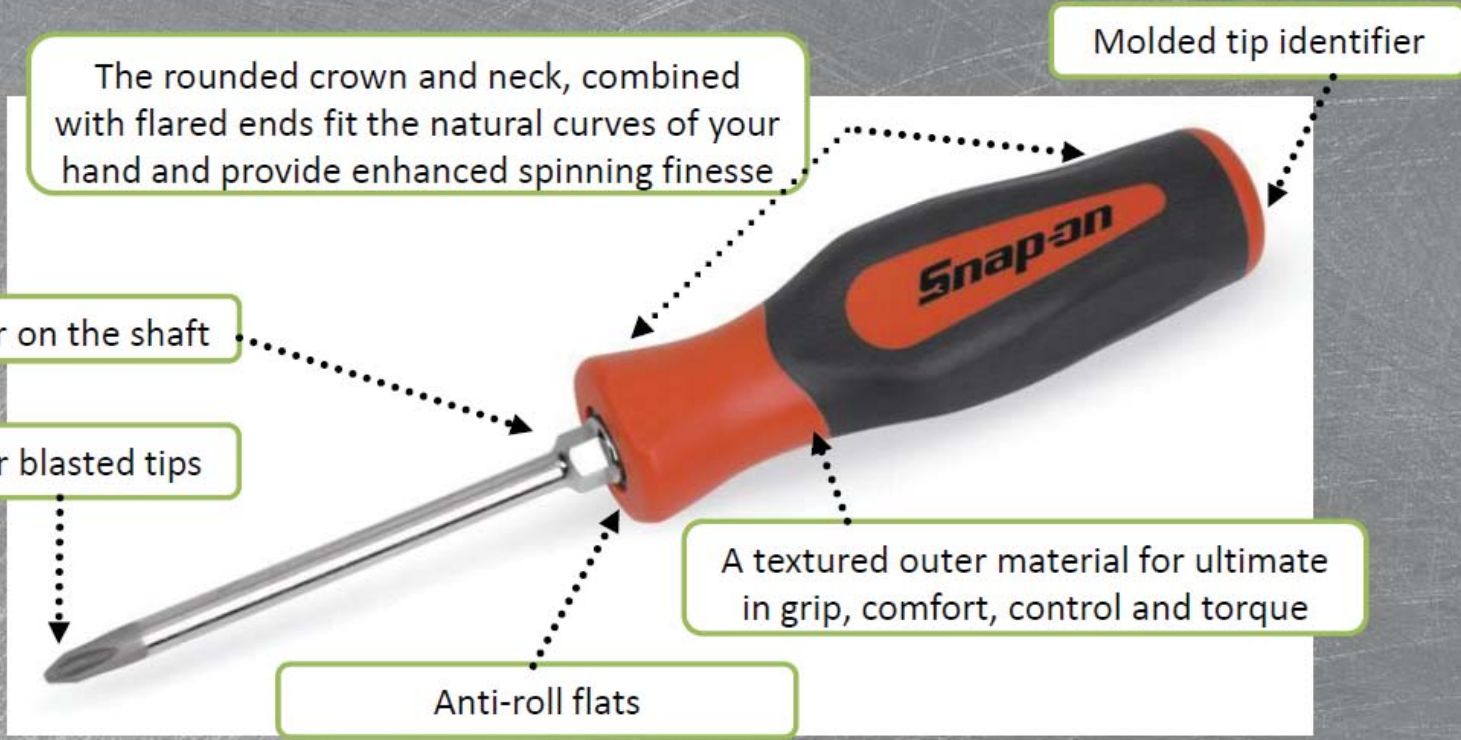
Ratcheting Combination, Standard Handle, 0° Offset, mm



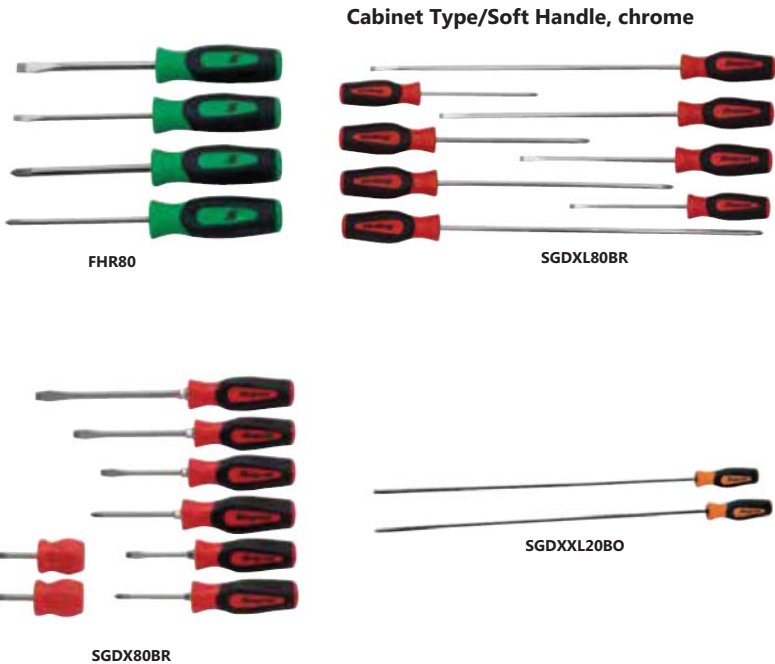
Ratcheting Combination, Short Handle, 0° Offset, inches



SCREWDRIVERS

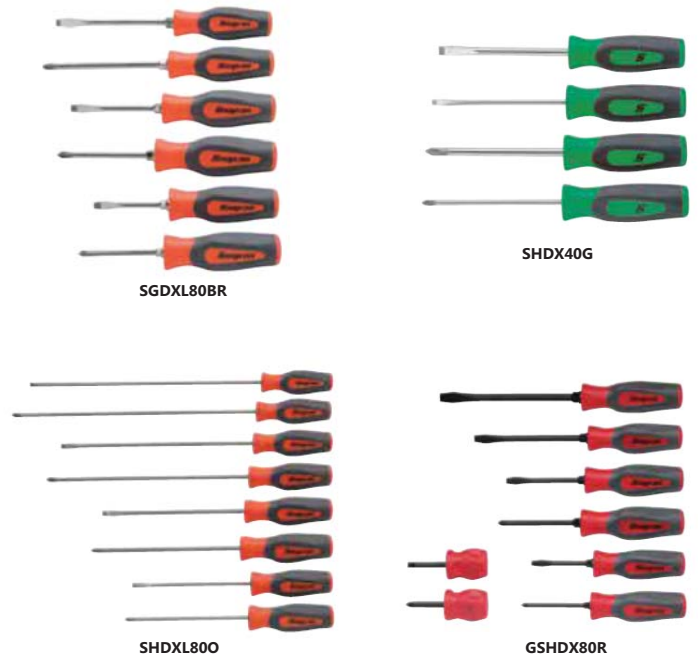


SOFT GRIP HANDLE COMBINATION SETS



Soft Grip Handle Colors
■ Red ■ Orange ■ Green
 R O G
 ADD SUFFIX TO STOCK NUMBER FOR SPECIAL COLORS

HARD GRIP HANDLE COMBINATION SETS



Hard Grip Handle Colors
■ Red ■ Orange ■ Green
 R O G
 ADD SUFFIX TO STOCK NUMBER FOR SPECIAL COLORS



VECTOREDGE CUTTERS AND TALON GRIP™ PLIERS

In addition to offering greater comfort and leverage, our cutters and pliers provide cleaner cuts and more pulling power — day after day, year after year.

THE *Snap-on* DIFFERENCE

VECTOREDGE CUTTERS AND TALON GRIP PLIERS

Talon Grip diamond-serrated tip for gripping and twisting

Strong alloy streeet keeps jaws sharper longer

Ramped tip improves accessibility

Cushion-grip resists automotive fluids and provides comfort.

Longer handle increases leverage

Talon Grip jaws for increased pulling power

Shear cutter for smooth cuts with less force

Clear coating protects against corrosion

Longer handle increase leverage

Cushion-grip handle resists automotive fluids and provides comfort

Patented three-position joint provides a wider spread

PowerEdge Tapered blade provides power at the throat (heavy wire) and finesse at the tip (fine wire)

Diagon at cutting head snips closer to the surface for more accurate cutting

Strong alloy streeet keeps jaws sharper longer

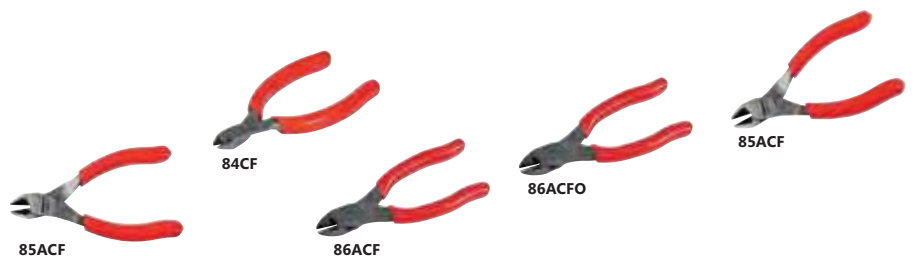
Joint placed close to cutting edge for better leverage

Longer contoured handle increases leverage

Longer contoured handle increases leverage

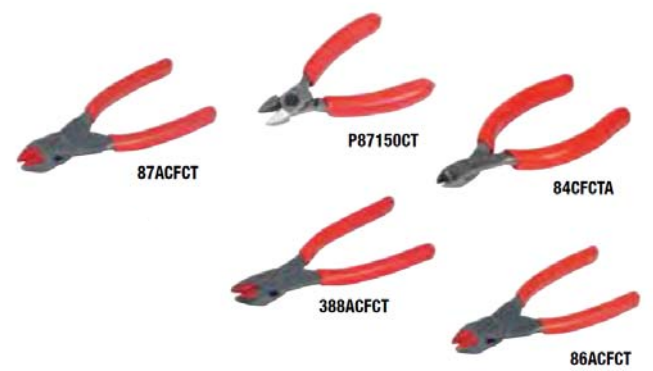
Standard Diagonal

- Quality forged steel ensures tools that will provide years of service
- Differential heat treatment produces the strength and toughness in desired areas to withstand repeated tough cutting jobs
- Handles are designed for comfort and to deliver leverage needed to tackle demanding jobs



Cushion Throat Cutters

- Urethane insert in jaws captures clipped material, reducing the likelihood of work environment contamination
- Retention of wire clippings enhances worker safety by preventing projectile material from being scattered throughout the worksite
- Handles are designed for comfort and deliver the leverage needed to tackle the most demanding jobs
- Quality forged steel ensures tools will provide years of service



Wire Stripper/Cutter/Crimper

- P-Series Cutting Pliers**
- End cutting pliers for working in difficult spaces
 - Cutting edge geometry strikes a balance between sturdiness and sharpness resulting in clean cuts that can last for as long as 200,000 cycles
 - Heat treated frame provides exceptional tool life
 - Hot forged technology aligns grain structure of proprietary alloyed steel to follow the profile of the shanks giving the pliers extraordinary tenacity and toughness
 - Precision grinding in joint greatly reduces friction providing smooth operation without lubrication
 - Screw joint minimizes friction and maximizes jaw alignment



(pls. refer to SNAP ON CATALOG 1400 for specific model and sizes)

COMBINATION/SLIP JOINT



LINEMAN'S



ADJUSTABLE JOINT



Tongue and Groove

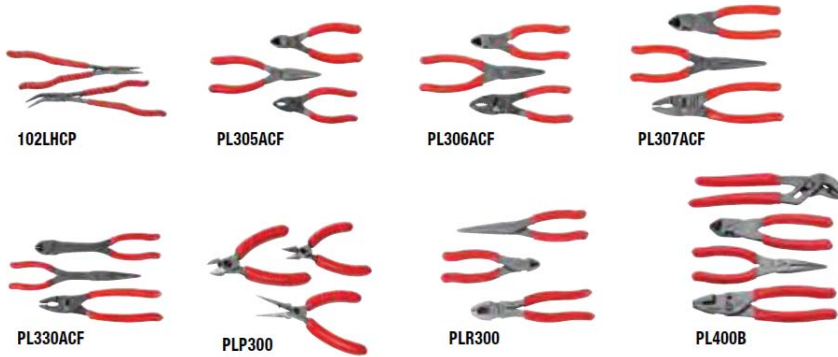
- Special tongue and groove design that assures nonslip jaw action
- Unique fastener system inhibits side to side jaw wobble for added strength and smoother operation



Special Purpose Pliers

- Bent Nose Pliers - Angled jaws for better access to hard to reach areas
- Pistol Grip - Angled handle for access to hard to reach areas
- Duck Bill - Specially designed for electronics work

PLIERS/CUTTERS SETS



PUNCHES, CHISELS & HAMMERS



DEAD BLOW



Combination



SOFT FACE



GENERAL HAND TOOLS



LEAK DETECTORS



EELD500

CIRCUIT TESTERS



EECT900_Amp



EECT900_AC



EECT900_DC



EECT900_0hm

VIDEOSCOPES



BK3000



BK5600DUAL85



BK6500



BK8500

(pls. refer to SNAP ON CATALOG 1400 for specific model and sizes)



website



youtube

Main Office: #2T, Cruz St. Cruzville, Zabarte Rd. Novaliches Quezon City, Metro Manila, Philippines 1123

Tel.: (+63 2) 3-417-4333 • 3-417-5435 • 3-418 -7079
3-419-9138 • 3-419-9166

FAX: (+63 2) 8-930-5499 • 7-729-3471

Facebook: www.facebook.com/hytecpowerincorporated

Engr. Eric Jude S. Soliman

President

Mobile#: (+63) 917-531-1624 / 922-866-2801
939-907-0620

Tel #: (+63 2) 7-975-2142 (Direct Line)

E-mail: ejssoliman@hytecpower.com