

**IZUMI**

# TOOLS FOR ELECTRICAL WIRING

**IZUMI PRODUCTS COMPANY**

[www.izumi-products.co.jp](http://www.izumi-products.co.jp)

E-mail: [tool@izumi-products.co.jp](mailto:tool@izumi-products.co.jp)





## **We, IZUMI, are a manufacture of tools for the electric utility industry.**

*With our company policy “quality is life of the company”,  
we are committed to provide safe and high quality products  
that meet a wide range of customer`s demands.*

### **PRODUCTS**

- *Cutters for electrical wiring*
- *Compression and crimping tools for wire connecting*
- *A full line of steel punches for sheet metal and angle bars.*
- *Pipe Benders*
- *High Pressure hydraulic pumps*

### **ALL IZUMI TOOLS ARE BACKED BY ISO 9001.**

*Our factory has been certified by ISO 9001. ISO 9001 is Quality Management system which is the most stringent of universally accepted international quality standards.*





# DISTRIBUTION NETWORK

## AMERICA

### Brazil

#### ● LINHA VIVA EQUIPAMENTOS LTDA.

Rua Pedro Alves 110-118 Parate, Santo Cristo, Rio de Janeiro, RJ. 20220-281 BRASIL  
Tel. 55-21-2274-4704 Fax. 55-21-2274-3371  
E-mail: linhaviva@openlink.com.br  
URL: <http://www.linhaviva.com.br>

### USA, Canada, Mexico

#### ● HUSKIE TOOLS, LLC.

1-800-860-6170  
195 Internationale Blvd  
Glendale Heights, IL 60139  
Tel. 1-800-860-6170 Fax. 1-800-345-3767  
E-mail: info@huskietools.com  
URL: <http://www.huskietools.com>

## EUROPE

### France

#### ● CEGERS TOOLS

ZI D'EPINAY SOUS-SENART 91802 BRUNOY FRANCE  
Tel. 33-1-60-47-29-26

### GERMANY

#### ● Holger Clasen GmbH + Co.

Alsterdorfer StraÙe 234, 22297 Hamburg, Germany  
Tel. 49-40-511-28-106 Fax. 49-40-511-28-109  
E-mail: info@holger-clasen.de  
URL: <http://www.holger-clasen.de>

### Norway

#### ● Ensto NOR A/S

Professor Birkelandsvei 26A, 1081 OSLO NORWAY  
Tel. 47-22-90-44-00

### Russia

#### ● Enerprom-Mikuni, ZAO / MIKEN, ZAO

28 Starokuzmikhinskaya str., Irkutsk, Russia 664033  
Letterts: PO box 718, Irkutsk  
Tel. (3952) 45-22-00 Fax. (3952) 43-22-45  
Email: info@mikuni.ru  
URL: <http://www.mikuni.ru>

#### ● Enerprom-M, ZAO

12 Kostyakova str., Moscow, Russia 127412  
Tel / Fax: (495) 745-95-98  
Email: enerprom@mikuni.ru

### United Kingdom

#### ● IZUMI PRODUCTS UK LTD.

Unit 4B Hatfield Way, South Church Enterprise, Park Bishop Auckland, Co. Durham, DL14 6XF, UK  
Tel. 44-1388-777132 Fax. 44-1388-777202  
E-mail: post@izumi-products.co.uk  
URL: <http://www.izumi-products.co.uk>

## AFRICA

### South Africa

#### ● E'LINESMAN (Pty) Ltd.

163 Elsberg Road, Delville Germiston 1400, Johannesburg, SOUTH AFRICA  
Tel. 27-11-827-0140 Fax. 27-11-824-2335  
E-mail: elinesman@mweb.co.za  
URL: <http://www.elinesman.co.za>

#### ● McWade Productions (Pty) Ltd.

34 Industry Road, Olifantsfontein, 1655, Gauteng, SOUTH AFRICA  
Tel. 27-11-316-2262 Fax. 27-11-316-4791  
E-mail: ravim@mcwade.co.za  
URL: <http://www.mcwade.co.za>

## ASIA PACIFIC

### Australia

#### ● SPECIALISED FORCE PTY. LTD.

131 Woids Avenue Carlton, N.S.W. 2218, Australia  
Tel. 61-2-9547-1844 Fax. 61-2-9547-2236  
URL: <http://www.specialisedforce.com.au>

### China

#### ● Guangdong Superpower Electric Power Technology Co., Ltd

RM1505, NO.16 Building, TIANAN Headquarter Center, No.555 Panyu Dadao North, Panyu District, Guangzhou 51000, CHINA  
Tel. 86-20-87694136 Fax. 86-20-87694186  
E-mail: superpower7b@163.net  
URL: <http://www.gd-juli.com>

#### ● SHANGHAI ZHONGDUN TRADING CO., LTD.

FLOOR 3, SECTION E, BUILDING 1, NO.128 JIJIANG ROAD, JIJIANG TOWN, SONGJIANG DISTRICT, SHANGHAI, 201615 CHINA  
Tel. 021-6763-7709 Fax. 021-6401-9369  
E-mail: chungtie@gmail.com  
URL: <http://www.chungtie.com.cn>

#### ● Wuhan Jujing Electromechanical Co., Ltd.

Room 2002-2008, Building I, New World International Trade Tower, 568# Jianshen Road, Jiangnan District, Wuhan, China  
Post code: 430022  
Tel. 86-27-83602871 Fax. 86-27-83602826  
E-mail: lillianfu@jujing.com.cn  
URL: <http://www.jujing.com.cn>

### Taiwan

#### ● CHUNG TIE ENGINEERING CO., LTD.

5F, NO.108-1 MINCHIUAN RD. SHINDIAN CITY, TAIPEI, TAIWAN 231  
Tel. 886-2-2218-1027 ext. 231  
Fax. 886-2-2218-1356  
E-mail: jimmy@chungtie.com.tw  
URL: <http://www.chungtie.com.tw>

### India

#### ● Crystal Mechanicals Pvt Ltd

102 Nidhi Industrial estate, Off N.H. No 8, Opp Hotel Golden Chariot, Valiv Village, Vasai East, Palghar District, Maharashtra. India. Postal Code 401208.  
Contact: Mr Suresh Nair- Technical Director.  
Mobile No: +91-9552871300/  
+91-9422074408

URL: <http://www.crimptechiniques.in>

E-mail: sureshnair@crimptechiniques.in  
izumiindia@gmail.com  
Service Centre Tel. +91-9320074408

### Indonesia

#### ● PT. CIPTA SOLUSI ELEKTRINDO

Menara Rajawali , Level 7-1  
Kawasan Mega Kuningan  
Jl. DR. Ide Anak Agung Gde Agung Lot No.5.1,  
Jakarta 12950-INDONESIA  
Tel.+62 21 29557393 Fax.+62 21 29557394  
URL: <http://www.cs-elektrindo.com>

### Korea

#### ● HANKOOK IZUMI CO., LTD

3F, 119-2, Eulji-ro, Jung-gu, Seoul, KOREA.  
Tel. 82-2-741-9966-7 Fax. 82-2-741-9968  
E-mail: izumibc@hanmail.net

### Malaysia

● WMM PRECISION ENTERPRISE SDN. BHD.  
 Lot 12, Jalan USJ 7/3C, UEP Subang Jaya,  
 47600 Petaling Jaya, Malaysia  
 Tel.60-3-5633-4712 Fax.60-3-5633-7929  
 E-mail : wmmppsb@gmail.com

### New Zealand

● HTC SPECIALISED TOOLING LTD.  
 33A Springs Road, East Tamaki, Auckland,  
 NEW ZEALAND  
 Tel.64-9-271-0800 Fax.64-9-271-0801  
 E-mail : info@specialisedtools.co.nz

### Pakistan

● POWER ENGINEERS CORPORATION  
 1ST FLOOR, VENUS PLAZA, EGERTON ROAD,  
 LAHORE PAKISTAN  
 Tel.92-42-6303448 Fax.92-42-6365533  
 E-mail : powereng@lhr.comsats.net.pk  
 Contact Person: Mr. Aqeel Ahmad

### Philippines

● Adamas International Trading  
 5J.de Mesa St., Little Baguio San Juan, Metro  
 Manila, Philippines 1500  
 Tel.+63(2)7274288 Fax.+63(2)7214924  
 E-mail : admin@adamasph.com  
 Contact Person: Mr. Jimmy Ang - General Manager  
 URL: <http://www.adamasph.com>

### Singapore

● NPC SYSTEMS PTE LTD  
 29 Tai Seng Ave #06-09  
 Natural Cool Lifestyle Hub, Singapore 534119  
 Tel.65-6268-9188 FAX.65-6268-3997  
 E-mail : info@npcsys.com

### Sri Lanka

● RICHARDSON PROJECTS (PVT) LTD.  
 342 Galle Road, 3rd Floor, Colombo 3, Sri Lanka  
 Tel.94-11-2564454 Fax.94-11-2564456  
 E-mail: info@richardsonsl.com

### Thailand

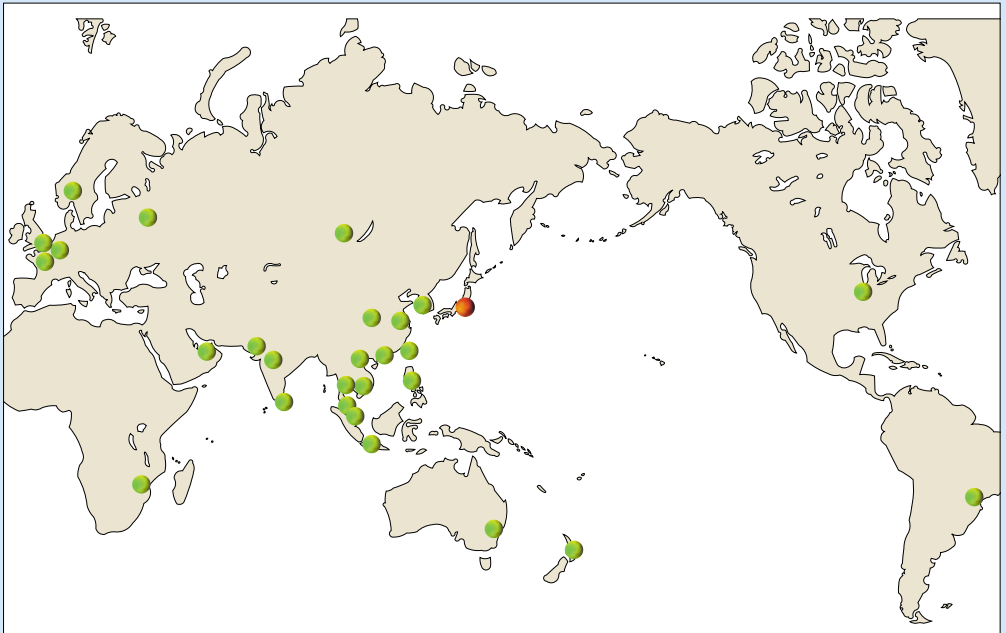
● GUNKUL ENGINEERING PUBLIC CO.,LTD.  
 1177, 8 Floor, Pearl Bangkok Building,  
 Phaholyothin Road, Phayathai, Bangkok  
 10400 Thailand  
 Tel.662-242-5800 Fax.662-242-5832-3  
 E-mail: gk\_eng@gunkul.com  
 URL : <http://www.gunkul.com>

### Vietnam

● SONG LA TECHNICAL EQUIPMENT CO.,LTD.  
 8A Tran Quang Dieu, Ward 13, District 3,  
 Ho Chi Minh City, Viet Nam  
 Tel.84-8-39350654, 84-90-380-4499  
 Fax.84-8-35260732  
 E-mail : vanminhsongla@gmail.com  
 ● SYSTEM AND TECHNOLOGY COMPANY LIMITED  
 ROOM #236, BINH MINH HOTEL, 27 LY THAI  
 TO ST., HANOI, VIETNAM  
 Tel.84-4-38264728 Fax.84-4-39344111  
 Email: cuongnt@sytec.com.vn  
 URL: <http://www.sytec.com.vn>

### UAE

● POUYA DYNAMIC TRADING (L.L.C)  
 P.O.BOX : 102618, Dubai  
 Tel.971-4-43-29-521 Fax.971-4-43-29-522  
 E-mail : pouya@pouyadt.com  
 URL : <http://www.pouyadt.com>  
 ● Excellent Technical Equipments  
 Trading (L.L.C)  
 P.O.BOX : 133422, Mussoffah | Abu Dhabi | UAE  
 Tel.+971-2-5543599 Fax.+971-2-5543590  
 Email : sales@excellent-system.com,  
 johnm@excellent-system.com  
 URL : <http://excellent-system.com>





# INDEX

## THE 6TH GENERATION BATTERY OPERATED TOOLS

### COMPRESSION TOOLS

<b>REC-651F</b> .....	2
<b>REC-6NDSL</b> .....	3
<b>REC-6431</b> .....	4
<b>REC-6510</b> .....	5
<b>REC-H6130</b> .....	6

### CUTTERS

<b>REC-S620</b> .....	9
<b>REC-S624</b> .....	10
<b>REC-S640</b> .....	11
<b>REC-630Y</b> .....	12
<b>REC-105YC</b> .....	13

### CRIMPING TOOLS

<b>REC-6630</b> .....	7
<b>REC-6750</b> .....	8

### OTHERS

<b>REC-6200MX</b> .....	14.15.16.17
-------------------------	-------------

## BATTERY OPERATED INLINE TOOLS

<b>SL-510/SL-C430/SL-C510</b> .....	18
<b>SL-S20</b> .....	19
<b>SL-S40</b> .....	20
<b>SL-95YC</b> .....	21
<b>SL-NDM (SL-6CJ/SL-CH)</b> .....	22
<b>ECO-50, ECO-50M</b> .....	23

## LITHIUM ION BATTERY OPERATED TOOLS

<b>LIC-5431</b> .....	28
<b>LIC-5510</b> .....	29
<b>LIC-5630</b> .....	30
<b>LIC-S524</b> .....	31
<b>LIC-S540</b> .....	32

## BATTERY OPERATED TOOLS

### CUTTERS

<b>REC-50M, LIC-50</b> .....	24
<b>REC-54ACSR, LIC-54ACSR</b> .....	25
<b>REC-54ACM, LIC-54AC</b> .....	26

<b>REC-65M, LIC-65</b> .....	27
------------------------------	----

<b>REC-S3550G</b> .....	37
-------------------------	----

### COMPRESSION TOOLS

<b>REC-3410</b> .....	33
<b>REC-3430A</b> .....	34
<b>REC-3510A</b> .....	35
<b>REC-3610</b> .....	36

### BATTERY OPERATED PUMP

<b>REC-P600/REC-Li600P</b> .....	38
----------------------------------	----

### OTHERS

<b>REC-55PDF</b> .....	39
<b>SB-3UK</b> .....	40

## BATTERY AND CHARGER

<b>BP-80LI</b> .....	42
----------------------	----

<b>CH-100</b> .....	43
---------------------	----

<b>BP-14LN, CH-25LNW</b> .....	44
--------------------------------	----

## CRIMPING TOOLS

<b>EP-150A</b> .....	45
----------------------	----

<b>12A</b> .....	46
------------------	----

<b>AC-5ND</b> .....	47
---------------------	----

<b>UC-6B</b> .....	56
--------------------	----

<b>UC-6FT2</b> .....	57
----------------------	----

## HYDRAULIC COMPRESSION TOOLS

<b>15B</b> .....	48
------------------	----

<b>16B</b> .....	49
------------------	----

<b>EP-50</b> .....	52
--------------------	----

<b>EP-410</b> .....	53
---------------------	----

<b>EP-431</b> .....	54
---------------------	----

<b>EP-510C</b> .....	55
----------------------	----

<b>EP-50H</b> .....	58
---------------------	----

<b>EP-410H</b> .....	59
----------------------	----

<b>EP-H130H</b> .....	60
-----------------------	----

<b>EP-431H</b> .....	61
----------------------	----

<b>EP-510HC</b> .....	62
-----------------------	----

<b>EP-610HS-2</b> .....	63
-------------------------	----

<b>EP-250H</b> .....	64
----------------------	----

<b>LP-430C</b> .....	65
<b>EP-520C</b> .....	66
<b>EP-60S</b> .....	67
<b>EP-60D</b> .....	68
<b>EP-100W</b> .....	69
<b>EP-200W</b> .....	70

## HYDRAULIC CUTTERS

<b>S-200</b> .....	71
<b>S-240</b> .....	72
<b>S-320</b> .....	73
<b>S-400</b> .....	74
<b>S-550G</b> .....	75
<b>850</b> .....	76
<b>SP-20A</b> .....	77
<b>SP-24</b> .....	78
<b>SP-32</b> .....	79
<b>SP-40A</b> .....	80
<b>SP-55A</b> .....	81
<b>P-60</b> .....	82
<b>P-85</b> .....	83
<b>P-100A</b> .....	84
<b>P-132</b> .....	85
<b>YSP-30B</b> .....	86
<b>P-105YC</b> .....	87

## HYDRAULIC PUMP

<b>HP-180N</b> .....	88
<b>HP-700A, FP-700A</b> .....	89
<b>R14E-H</b> .....	90
<b>R14E-A1</b> .....	91
<b>HPM-06A</b> .....	92
<b>HPE-2A, HPE-2D</b> .....	93
<b>HPE-4, HPE-4M</b> .....	94

## HYDRAULIC PUNCHES

<b>SH-10(A)P, SH-10(B)P</b> .....	95
<b>SH-5PDG</b> .....	96
<b>SH-70B</b> .....	97

## HYDRAULIC PIPE BENDER

<b>PB-10N, PB-15N</b> .....	98
-----------------------------	----

## OTHER TOOLS

<b>NP-400</b> .....	99
<b>IZ-325A</b> .....	100

## FORCE & PRESSURE TEST GAUGE

<b>PG-325, PG-15F, PG-610B</b> <b>PG-H130, PG-SL, PG-UC6</b> ...	101
---	-----

## TECHNICAL DATA

<b>Selection of Compression Tools</b> <b>(6-15 ton)</b> .....	102
<b>Selection of Compression Tools</b> <b>(30-200 ton)</b> .....	103
<b>Selection of Cutters</b> .....	104-105
<b>Hydraulic Hose Selection Chart</b> ...	106
<b>TECHNICAL DATA</b> .....	107-114
<b>IZUMI TAP-OFF CONNECTORS</b> ...	50-51

NOTE : IZUMI reserves the right to change specification of products without notice.

# The 6th generation of IZUMI battery operated tools

## 12 ton New SL series

### FEATURES

New rapid advance system for ease of handling

Reduce operation time

Elastomer inlay housing design for ease of handling

Slip resistance grip

Lighter weight

LED light for night or dark working site



**Energy efficiency improved by 15%**



MODEL No.

**REC-651F**

Accepts Beku type dies widely used in European countries  
 Applicable range : up to 150mm<sup>2</sup> Cu connectors  
 (Approx. 20mm across vertex of hexagon)

**SPECIFICATIONS**

Ram stroke : 16 mm  
 Motor : 14.4 VDC

Reservoir capacity :  
 78 cc  
 Force at die face :  
 52 kN

**SIZE**

255 (L) x 355 (H) x 79 (W) mm

**WEIGHT**

2.9 kg (without battery)

**ACCESSORIES**

Shoulder strap,  
 Double molded carrying case,  
 Battery and charger

**REMARKS**

Dies are sold separately.  
 Specify the manufacturer's die and  
 connector numbers.  
 Specify charger input voltage.

- \* Battery operated compression tool
- \* Latch type H framed tool head
- \* Light weight and slim design
- \* Pistol type, well balanced design
- \* 14.4VDC powerful motor
- \* Right or left handed operation
- \* Accepts Beku type dies
- \* 180 degree swivel head
- \* Optional DC charger
- \* Quality backed by ISO 9001
- \* Rapid advance
- \* non-slip soft grip
- \* LED light for dark working site



REC-651F shown with BP-70MH

**FEATURES**

The REC-651F accepts BEKU type dies widely used in European countries.

Light weight and slim design is ideal for close quarter application such as connection in the switch box. Also easy latch type closed head provides easy insertion and removal of connectors.

Electronic circuit board with LED indicates compression status and battery capacity.

The REC-651F has electronic memory function to read number of compression cycles that tool has made.

The number of crimps per charge for 150mm<sup>2</sup> terminal : 67 crimps / BP-70MH



MODEL No.

**REC-6NDSL**

Accepts 6 ton U-type dies



REC-6NDSL shown with BP-70MH

**FEATURES**

The REC-6NDSL was developed for more robust higher quality, pistol grip tool.

It has a choice of jaw types, the SL-6CJ Jaw for crimping. For cutting, switch to the SL-CH and SL-ACSR cutter attachments.

Quickly change head types with the pull-pin design.

The SL-6CJ accommodates 6 ton U-type dies for applying compression fittings to copper, aluminium and ACSR conductors widely used in the industry.

**SPECIFICATIONS**

Motor : 14.4 VDC

Reservoir capacity :  
78 cc  
Force at die face :  
70 kN

**SIZE**

255 (L) x 364 (H) x 84.2 (W) mm

**WEIGHT**

2.9 kg (without battery)

**ACCESSORIES**

Shoulder strap,  
Double molded carrying case,  
Battery and Charger

**REMARKS**

Dies are sold separately.  
\* Battery operated hydraulic  
compression tool

Optional attachments  
SL-6CJ Crimping Jaw  
SL-CH Cu/Al Cutter Attachment  
SL-ACSR Cutter Attachment

\* Light weight slim design.  
\* Rapid advance  
\* Non-slip soft grip  
\* LED light for dark working site

MODEL No.

**REC-6431**Accepts existing **12 ton** U-type dies**SPECIFICATIONS**

Ram stroke : 31 mm  
 Motor : 14.4 VDC

Reservoir capacity :  
 153 cc  
 Force at die face :  
 120 kN

**SIZE**

284 (L) x 431 (H) x 84 (W) mm

**WEIGHT**

6.45 kg (without battery)

**ACCESSORIES**

Shoulder strap,  
 Double molded carrying case,  
 Battery and charger

**REMARKS**

Dies are sold separately.  
 Specify the manufacturer's die and  
 connector numbers.  
 Specify charger input voltage.

- \* Battery operated pistol type  
 compression tool
- \* Rapid ram advance mechanism
- \* Well balanced design
- \* 31 mm Jaw opening C head
- \* 14.4VDC powerful motor
- \* Right or Left handed operation
- \* Accepts all dies used for Alcoa,  
 Burnady, T&B, Klauke, Cembre and  
 Blackburn 12 ton U-type dies
- \* Optional DC charger
- \* Quality backed by ISO9001
- \* Non-slip soft grip
- \* LED Light for dark working site
- \* No pinch points on retraction



REC-6431 shown with BP-70MH

**FEATURES**

The REC-6431 is a battery operated 12 ton class compression tool to accommodate 12 ton U-type dies for applying compression fittings to copper aluminum and ACSR conductors widely used in the industry.

Pistol type 12 ton tool makes it easier for working in tight space or in the control box.

The trigger switch and return button are activated by only one hand so that other hand is always free to hold working material.

Electronic circuit board with LED indicates compression status and battery capacity.

The REC-6431 has electronic memory function to record number of compression cycles that tool has made.

New head design completely eliminated retract pinch points.



MODEL No.  
**REC-6510**

Accepts existing **12 ton** U-type dies



REC-6510 shown with BP-70MH



### FEATURES

The REC-6510 is a battery operated 12 ton class compression tool to accommodate 12 ton U-type dies for applying compression fittings to copper, aluminum and ACSR conductors. widely used in the industry.

Pistol type 12 ton tool made it easier for working in tight space or in the control box.

The trigger switch and return button are activated by only one hand so that other hand is always free to hold working material.

Electronic circuit board with LED indicates compression status and battery capacity.

The REC-6000 series tool has electronic memory function to record number of compression cycles that tool has made.

New head design completely eliminated retract pinch points.

### SPECIFICATIONS

Ram stroke : 42 mm  
Motor : 14.4 VDC

Reservoir capacity : 153cc  
Force at die face : 120 kN

### SIZE

453(L) x 284(H) x 84(W) mm

### WEIGHT

6.85 kg (without battery)

### ACCESSORIES

Shoulder Strap  
Double molded carrying case,  
Battery and charger

### REMARKS

Dies are sold separately.

- \* Battery operated pistol type compression tool
- \* Rapid ram advance mechanism
- \* Well balanced design
- \* 42mm Jaw opening C head
- \* 14.4VDC powerful motor
- \* Right or Left handed operation
- \* Accepts all dies used for Alcoa, Burndy, T&B, Klauke, Cembre and Blackburn 12 ton U-type dies
- \* 270 degree swivel head
- \* Optional DC charger
- \* Quality backed by ISO9001
- \* Non-slip soft grip
- \* LED Light for dark working site
- \* No pinch points on retraction

MODEL No.

**REC-H6130**

Accepts existing **12 ton** U-type dies, dies for deep indent crimps



REC-H6130 shown with BP-70MH

**SPECIFICATIONS**

Ram stroke : 30 mm  
Motor : 14.4 VDC

Reservoir capacity :  
153 cc  
Force at die face : 120 kN

**SIZE**

423 (L) x 284 (H) x 80 (W) mm

**WEIGHT**

5.1 kg (without battery)

**ACCESSORIES**

Shoulder strap,  
Double molded carrying case,  
Battery and charger

**FEATURES**

The REC-H6130 is a battery operated 12 ton class compression tool to accommodate 12 ton U-type dies and dies for deep indent crimps widely used in the industry.

This H head tool makes it easier to access to tight cable joints particularly in the control box.

The trigger switch and return button are activated by only one hand so that other hand is always free to hold working material.

New head design completely eliminated retract pinch points.

**REMARKS**

Dies are sold separately.  
Specify the manufacturer's die and connector numbers.

- \* Battery operated pistol type compression tool
- \* Rapid ram advance mechanism
- \* Well balanced design
- \* 25 mm Jaw opening H head
- \* 14.4VDC powerful motor
- \* Right or Left handed operation
- \* Accepts all dies used for Alcoa, Burndy, T&B, Klauke, Cembre and Blackburn 12 ton compressors, as well as dies for deep indent crimps.
- \* 180 degree swivel head
- \* Optional DC charger
- \* Quality backed by ISO9001
- \* Non-slip soft grip
- \* LED Light for dark working site
- \* No pinch points on retraction



Example of dies

MODEL No.

**REC-6630**

Up to 32mm outer diameter connector



REC-6630 shown with BP-70MH

**FEATURES**

The REC-6630 is a battery operated hand held dieless crimping tool used to compress Anderson type connectors up to 500KCM.

Three movable nibs push connectors against the top fixed nib. As a result, four indentations are made into the connector.

This tool is designed to install Anderson type connectors. Consult your connector manufacturer for dieless applications.

**SPECIFICATIONS**

Ram stroke : 31.5 mm  
Opening between nibs : 32 mm

Reservoir capacity :  
78 cc  
Output force :  
60 kN

**SIZE**

409(L) x 274(H) x 79(W) mm

**WEIGHT**

4.6kg (without battery)

**ACCESSORIES**

Shoulder strap,  
Double molded carrying case,  
Battery and charger

**REMARKS**

Specify charger input voltage.

- \* Battery operated dieless crimping tool
- \* Rapid ram advance mechanism
- \* Light weight aluminum forged head
- \* LED lights when battery capacity becomes low
- \* Light weight and slim design
- \* Pistol type housing
- \* 14.4VDC powerful motor
- \* Right or Left handed operation
- \* 360 degree swivel head
- \* Optional DC charger
- \* Non-slip soft grip
- \* LED Light for dark working site



MODEL No.

**REC-6750**

Up to 750KCM Anderson type connector

**SPECIFICATIONS**

Ram stroke : 31.5 mm  
Opening between nibs : 36 mm

Reservoir capacity :  
78 cc  
Output force :  
60 kN

**SIZE**

420(L) x 276(H) x 79 (W) mm

**WEIGHT**

4.6 kg (without battery)

**ACCESSORIES**

Shoulder strap,  
Double molded carrying case,  
Battery and charger

**REMARKS**

Specify charger input voltage.

- \* Battery operated dieless crimping tool
- \* Rapid ram advance mechanism
- \* Light weight aluminum forged head
- \* LED lights when battery capacity becomes low
- \* Light weight and slim design
- \* Pistol type housing
- \* 14.4VDC powerful motor
- \* Right or Left handed operation
- \* 360 degree swivel head
- \* Optional DC charger
- \* Non-slip soft grip
- \* LED Light for dark working site



REC-6750 shown with BP-70MH

**FEATURES**

The REC-6750 is a flip-top, battery operated, hand held dieless crimping tool used to compress Anderson type connectors up to 750KCM.

The flip top latch opens to allow for easy cable positioning and removal.

Three movable nibs push connectors against the top fixed nib. As a result, four indentations are made into the connector.

Since this tool is designed to install Anderson type connectors, it is highly recommended to consult with connector manufacturer for dieless applications.



MODEL No.  
**REC-S620**

Cuts steel materials as well as cables



REC-S620 shown with BP-70MH



**SPECIFICATIONS**

Ram stroke : 24 mm  
Motor : 14.4 VDC

Reservoir capacity :  
78 cc  
Output force :  
66 kN

**SIZE**

338 (L) x 252 (H) x 79 (W) mm

**WEIGHT**

3.4 kg (without battery)

**ACCESSORIES**

Shoulder strap,  
Double molded carrying case,  
Battery and charger,

**FEATURES**

The REC-S620 was designed to cut the toughest steel used in construction today.

With the pull of the trigger, you can cut ACSR cables up to 20mm and ground rod to 13mm, and guy wires to 16mm.

The specially designed flip-top latch and rotating head provide exceptional ease of use and maneuverability in tight working quarters.

The REC-S620 has an overload bypass which will kick out when tool reaches 66kN of output.

**REMARKS**

Specify charger input voltage.

Cutting capacity :

Material		
Wire rope 6x7	:	16mm
6x12	:	20mm
6x19	:	20mm
Soft steel bar	:	20mm
Re-bar	:	13mm
Cu strands	:	20mm
Al strands	:	20mm
ACSR	:	20mm
Guy wire 1x7	:	15mm
1x19	:	16mm
CCP cable	:	N/A

- \* Rapid advance
- \* Non-slip soft grip
- \* LED Light for dark working site

MODEL No.

**REC-S624**

Cuts steel materials as well as cables



REC-S624 shown with BP-70MH

**SPECIFICATIONS**

Ram stroke : 26 mm  
 Motor : 14.4 VDC

Reservoir capacity :  
 78 cc  
 Output force :  
 84 kN

**SIZE**

350 (L) x 260 (H) x 79 (W) mm

**WEIGHT**

4.3 kg (without battery)

**ACCESSORIES**

Shoulder strap,  
 Double molded carrying case,  
 Battery and charger,

**REMARKS**

Specify charger input voltage.

Cutting capacity :

Material		
Wire rope	6x7	: 18mm
	6x12	: 24mm
	6x19	: 24mm
Soft steel bar		: 20mm
Re-bar		: 16mm
Cu strands		: 24mm
Al strands		: 24mm
ACSR		: 24mm
Guy wire	1x7	: 20mm
	1x19	: 20mm
CCP cable		: N/A

- \* Rapid advance
- \* Non-slip soft grip
- \* LED Light for dark working site

**FEATURES**

The REC-S624 was designed to cut the toughest steel used in construction today.

With the pull of the trigger, you can cut ACSR cables up to 24mm, and guy wires to 20mm.

The specially designed flip-top latch and rotating head provide exceptional ease of use and maneuverability in tight working quarters.

The REC-S624 has an overload bypass which will kick out when tool reaches 84kN of output.



MODEL No.  
**REC-S640**

Cuts steel materials as well as cables.



REC-S640 shown with BP-70MH



**FEATURES**

The REC-S640 was designed to cut the ACSR cables used in transmission line construction work. It is now equipped with rapid ram advance mechanism for faster operation.

With the pull of the trigger, you can cut ACSR cables up to 38mm, guy wires to 20mm, and wire ropes to 22mm.

The rotating head provides exceptional ease of use and maneuverability in tight working quarters.

The lock pin type head allows the cutter head to open widely for easy insertion of cutting material.

The REC-S640 has an overload bypass which will kick out when tool reaches 68kN of output.

**SPECIFICATIONS**

Ram stroke : 44 mm  
Motor : 14.4 VDC

Reservoir capacity :  
153cc  
Output force :  
70 kN

**SIZE**

460 (L) x 272 (H) x 80 (W) mm

**WEIGHT**

6.0 kg (without battery)

**ACCESSORIES**

Shoulder strap,  
Double molded carrying case,  
Battery and charger

**REMARKS**

Cutting capacity :

Material	
Wire rope 6 x 7	: 22mm
6 x 12	: 22mm
6 x 19	: 22mm
Soft steel bar	: 20mm
Re-bar	: 16mm
Cu strands	: 40mm
Al strands	: 40mm
ACSR	: 38mm
Guy wire 1 x 7	: 15mm
1 x 19	: 20mm
CCP cable	: N/A

- \* Rapid advance
- \* Non-slip soft grip
- \* LED Light for dark working site

MODEL No.

**REC-630Y**

Al strands : 28mm(240mm<sup>2</sup>)  
 Cu strands : 28mm(250mm<sup>2</sup>)  
 ACSR : 19mm(120mm<sup>2</sup>) (Single strand steel core)



REC-630Y shown with BP-70MH

**SPECIFICATIONS**

Ram stroke : 21mm  
 Motor : 14.4 VDC

Reservoir capacity :  
 78cc  
 Output force :  
 60 kN

**SIZE**

403(L) x 291(H) x 80(W) mm

**WEIGHT**

3.5kg (without battery)

**ACCESSORIES**

Shoulder strap,  
 Double molded carrying case,  
 Battery and charger

**FEATURES**

The REC-630Y is a scissors type cutter used to cut ACSR cables up to 556KCM, as well as copper cables to 750KCM and aluminum cables up to 30mm outer diameter.

All cuts are clean with a minimal amount of cable distortion, which allows for easy connector installation on cables.

The head can be rotated 180 degrees for greater maneuverability in working quarters.

The keeper plate prevents jaws from spreading apart when cutting ACSR.

**REMARKS**

- \* Battery operated scissors type cutter
- \* LED lights when battery capacity becomes low
- \* Light weight and slim design
- \* Pistol type design
- \* 14.4VDC powerful motor
- \* Right or Left handed operation
- \* Optional DC charger
- \* Quality backed by ISO9001
- \* Rapid advance
- \* Non-slip soft grip
- \* LED Light for dark working site



MODEL No.

**REC-105YC**

Cuts electric cables up to 105mm



REC-105YC with BP-80LI

**SPECIFICATIONS**

Blade opening : 105mm  
 Motor : 14.4 VDC

Reservoir capacity :  
 184 cc  
 Output force :  
 124 kN

**SIZE**

615(L) x 335(H) x 100(W) mm

**WEIGHT**

8.2 kg (without battery)

**ACCESSORIES**

Shoulder strap, Grip,  
 Steel carrying case,  
 Battery and charger

**FEATURES**

The REC-105YC was upgraded from the REC-685YC. This new powerful cutter can even cut armored cable and popular underground cables which cannot cut with previous model.

The scissors type cutter head provides exceptional ease of use and maneuverability when making many cuts.

Wide open 105mm cutter blade design allows cutting larger cables.

High cutting force gives fast and smooth cutting performance

**REMARKS**

Cutting capacity :

Material

600V-CV325mm<sup>2</sup>

4 core (ø72)

600V-CV600mm<sup>2</sup>

single core (ø41)

600V-CVT400mm<sup>2</sup>

Triple cable (ø72)

6600V-CV600mm<sup>2</sup>

Single core (ø47)

6600V-CV325mm<sup>2</sup>

3 core (ø77)

600V-IV500mm<sup>2</sup>

Single core (ø35)

600V-VVR250mm<sup>2</sup>

4 core (ø65)

Energy cable Cu 4x240mm<sup>2</sup>

Up to ø105

Energy cable Al 4x300mm<sup>2</sup>

Up to ø105



MODEL No.

**REC-6200MX**

Non-insulated terminals: 14, 22, 38, 60, 70, 80, 100, 150, 200mm<sup>2</sup>  
 Angle beam fabricating attachments and many other attachments



REC-6200MX shown with BP-70MH

**SPECIFICATIONS**

Ram stroke : 22 mm  
 Motor : 14.4 VDC

Reservoir capacity :  
 78 cc  
 Force at die face :  
 127 kN

**SIZE**

383 (L) x 261 (H) x 79 (W) mm

**WEIGHT**

5.0 kg (without battery)

**ACCESSORIES**

Shoulder strap,  
 Plastic carrying case,  
 Indenting dies,  
 Nest : Nest wheel & 200 die  
 Indentor : 14, 22, 38-70, 80-150, 200  
 (5) pieces  
 Battery and charger

**REMARKS**

Following attachments are available separately.

200AT-13WT : Threaded bar cutting attachment  
 200AT-S16 : Rebar cutting attachment  
 200AT-50YC : Cable cutting attachment  
 200AT-16B : T connector compression dies  
 200AT-HEX : Hexagonal compression Dies  
 200AT-9PD : Knock out punching attachment  
 200AT-AP18 : Angle beam punching attachment  
 P-200M : Multipurpose Hydraulic Head

- \* Rapid advance
- \* Non-slip soft grip
- \* LED Light for dark working site

**FEATURES**

The REC-6200MX is a multipurpose battery operated tool suitable for various types of crimping, cutting, punching and etc.

Available attachments are 8 kinds and the REC-6200MX comes standard with rotary type crimping head, 200 mm<sup>2</sup> Yoke-nest and indentors suitable for up to 200 mm<sup>2</sup> crimping terminals.

Attachments are mounted on the tool head by inserting two lock pins located at the cylinder head for easy changeover.

The control buttons are activated by only one hand so that other hand is always free to hold working material.

Electronic circuit board with LED indicates compression status and battery capacity.





MODEL No.

**200AT-50YC** Cable Cutter

 Cutting capacity: up to 50mm cable (including insulation)  
 # of cuts/charge (BP-14LN)

Cu 3 × 150mm <sup>2</sup> (46mmOD)	40
Cu 500mm <sup>2</sup> (45mmOD)	34

**REMARKS**

Cuts nonferrous cables only.

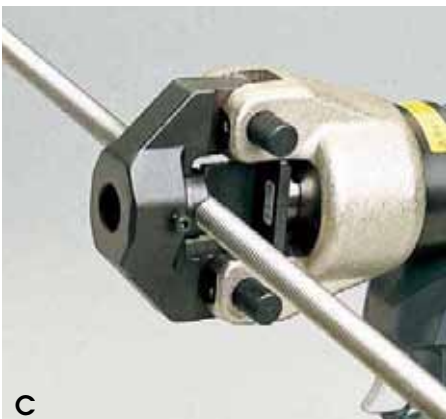


MODEL No.

**200AT-S16** Re-bar Cutter

Cutting capacity: # of cuts/charge (BP-14LN)

16mm rebar	120
16mm soft steel bar	120
13mm stainless steel bar	105



MODEL No.

**200AT-13WT** Threaded bar Cutter

Cutting capacity: # of cuts/charge (BP-14LN)

W3/8" Soft steel (ss)	105
Stainless	52

W1/2" Soft steel (ss)	82
stainless	42

 ※ Comes with W3/8" Die Only.  
 W1/2, M10, M12 Die sold separately.



D

MODEL No.

**200AT-9PD**

Knock out Puncher

Punching capacity : up to B104 (115.5mm) diameter hole  
on 3.2mm thickness mild steel  
34/charge (BP-14LN)

**REMARKS**

Punch & die, Set bolts, Collars are the same as those used for SH-10.

200AT-9PD comes with Set bolts and Collars.

Punch and die are sold separately. (See SH-10 page)



E

MODEL No.

**200AT-AP18**

Angle Steel Puncher

Punching capacity:  $\phi$  10.5,  $\phi$  13.5,  $\phi$  17.5 mm  
holes on 6mm thickness steel

Size: 186 × 130 × 67 mm

Weight: 3.8 kg

# of punching/charge: 82 (BP-14LN)



F

MODEL No.

**200AT-Hex**

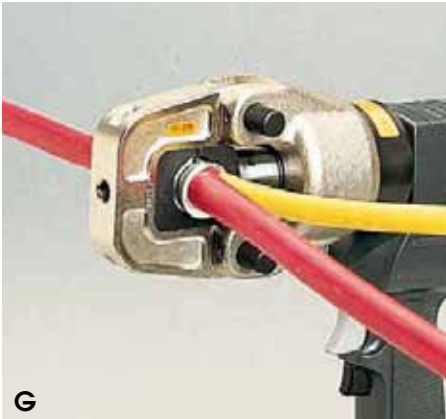
Hexagonal Compression Dies

Compression Dies & # of compression per charge

Size	Across vertex	Die width
Cu8~14-12	12	18.4
Cu22~38-14	14	15
Cu45~70-19	19	11
Cu75~100-23	23	9
Cu110~125-26	26	11
Cu150-29	29	10
Cu180~200-32	32	10

**REMARKS**

# of compression for Cu180~200-32 : 35 (BP-14LN)



G

MODEL No.

**200AT-16B**

Dies for C-connectors

Compression Dies & # of compression per charge. (BP-14LN)

Size	Size	Size
T-11	T-44	T-122
T-16	T-60	T-154
T-20	T-76	T-190
T-26	T-98	T-240

**REMARKS**

Dies are the same as those of #16B tool.

# of compression for T-240 : 40 (BP-14LN)



H

MODEL No.

**P-200M**

Multipurpose Hydraulic Head

Maximum input pressure: 68.5Mpa or 10,000 PSI

Oil Volume Required: 40cc

Output force: 124 kN

Weight: 2.8 kg

P-200M Hydraulic Head accepts all attachments of LIC-5200MX/REC-5200MX.

MODEL No.

# SL-510/SL-C430 SL-C510

12 Ton Streamline Compression Tools.



SL-510

SL-C430

SL-C510

## SPECIFICATIONS

Ram stroke : SL-510 42 mm  
 SL-C430 31 mm  
 SL-C510 42 mm  
 Motor : 14.4 VDC  
 Reservoir capacity : 45 cc  
 Force at die face : 120 kN

## SIZE

SL-510 : 485(L)x121(H)x101(W)mm  
 SL-C430: 500(L)x149(H)x101(W)mm  
 SL-C510: 521(L)x150(H)x101(W)mm

## WEIGHT

SL-510 : 5.3 kg (without battery)  
 SL-C430 : 6.05 kg ( " )  
 SL-C510 : 6.45 kg ( " )

## ACCESSORIES

Double molded carrying case,  
 Battery and Charger



SL-510



SL-C510



## FEATURES

The SL-510, SL-C430, SL-C510 are the first streamline 12 ton hydraulic compression tools in the industry.

They accommodate 12 ton U-type dies for applying compression fittings to copper, aluminum and ACSR conductors.

The SL-510 has the light weight latched head which makes it lighter than existing 12 ton compression tools.

The SL-C430 and SL-C510 are C head designed tools. They eliminate the extra work of closing the latch.

They have electric memory function to record number of compression cycles that tools have made.

New head design for C head completely eliminated retract pinch points.

## REMARKS

Dies are sold separately.  
 Specify the manufacturer's die and connector numbers.

Rapid ram advance mechanism.  
 Accept all dies used for Alcoa, Burndy, T&B, Klauke, Cembre and Blackburn 12 ton U-type dies.

Non-Slip soft grip.

LED Light for dark working site.

No Pinch Points on retractoin (C head only)

Section:

SL-510 :

42 mm Jaw opening lightweight latched head

SL-C430 :

31 mm Jaw opening C head

SL-C510 :

42 mm Jaw opening C head

MODEL No.  
**SL-S20**

Cuts steel materials as well as cables.



SL-S20 shown with BP-70MH



**SPECIFICATIONS**

Ram stroke : 20 mm  
Motor : 14.4 VDC

Reservoir capacity :  
100cc  
Output force :  
67 kN

**SIZE**

414 (L) x 95 (H) x 70 (W) mm

**WEIGHT**

3.0 kg (without battery)

**ACCESSORIES**

Shoulder strap,  
Double molded carrying case,  
Battery and charger

**FEATURES**

The SL-S20 is 6 ton stream line cutter with 20 mm jaw opening. The SL-S20 was designed to cut the toughest steel used in construction today. It is now equipped with rapid ram advance mechanism for faster operation.

With the pull of the trigger, you can cut ACSR cables up to 20mm, guy wires to 16mm and ground rod to 13mm.

The specially designed flip-top latch rotating head provides exceptional ease of use and maneuverability in tight working quarters.

The SL-S20 has an overload bypass which will kick out when tool reaches 6 tons of output.

**REMARKS**

Cutting capacity :

Material	
Wire rope 6 x 7	: 16mm
6 x 12	: 20mm
6 x 19	: 20mm
Soft steel bar	: 20mm
Re-bar	: 13mm
Cu strands	: 20mm
Al strands	: 20mm
ACSR	: 20mm
Guy wire 1 x 7	: 15mm
1 x 19	: 16mm
CCP cable	: N/A



MODEL No.

**SL-S40**

Cuts steel materials as well as cables.

**SPECIFICATIONS**

Ram stroke : 40 mm  
 Motor : 14.4 VDC

Reservoir capacity :  
 166cc  
 Output force :  
 70 kN

**SIZE**

530 (L) x 121 (H) x 101 (W) mm

**WEIGHT**

5.1 kg (without battery)

**ACCESSORIES**

Shoulder strap,  
 Double molded carrying case,  
 Battery and charger

**REMARKS**

Cutting capacity :

Material	
ACSR 477MCM	: 38mm
Wire rope 6 x 7	: 22mm
Wire rope 6 x 12	: 22mm
Wire rope 6 x 19	: 22mm
Cu strands	: 40mm
Al strands	: 40mm
Guy wire 1 x 7	: 15mm
Guy wire 1 x 19	: 20mm



SL-S40 with BP-80LI

**FEATURES**

The SL-S40 is 7 ton stream line cutter with 40mm jaw opening.

The SL-S40 was designed to cut the toughest steel cable used in construction today.

Stream line style gives maneuverability and easy access to tight working quarters.

Newly designed blades were designed to cut ACSR.

Those blades avoid jamming and dent when cutting steel materials

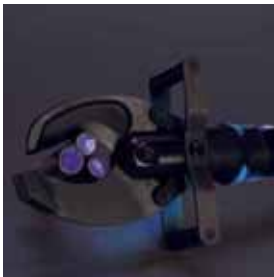


MODEL No.  
**SL-95YC**

Up to 95 mm OD cable (not steel core)



SL-95YC with BP-80LI



### SPECIFICATIONS

Blade opening : 95mm  
Motor : 14.4 VDC

Reservoir capacity :  
153 cc  
Output force :  
124 kN

### SIZE

685(L) x 250(H) x 120(W) mm

### WEIGHT

8.8 kg (without battery)

### ACCESSORIES

Shoulder strap,  
Steel carrying case,  
Battery and charger

### FEATURES

The SL-95YC is the world first In-line type 12 ton Battery Operated large Cable Cutter.

This new powerful cutter can cut armored cables and popular underground cables.

The scissors type cutter head provides exceptional ease of use and maneuverability when making many cuts.

Wide open 95mm cutter blade design allows cutting larger cables.

High cutting force gives fast and smooth cutting performance

Two way handles give better control and positioning for many cuts and also works as a stand on the ground.

### REMARKS

Cutting capacity :

Material  
600V-CV325mm<sup>2</sup>  
4 core (ø72)  
600V-CV600mm<sup>2</sup>  
single core (ø41)  
600V-CVT400mm<sup>2</sup>  
Triple cable (ø72)  
6600V-CV600mm<sup>2</sup>  
Single core (ø47)  
6600V-CV325mm<sup>2</sup>  
3 core (ø77)  
600V-IV500mm<sup>2</sup>  
Single core (ø35)  
600V-VVR250mm<sup>2</sup>  
4 core (ø65)

Energy cable Cu 4x240mm<sup>2</sup>  
Up to ø95  
Energy cable Al 4x300mm<sup>2</sup>  
Up to ø95

MODEL No.

**SL-NDM**

7 TON In-line Tool with changeable Head.



SL-NDM with BP-70MH

**SPECIFICATIONS**

Ram stroke : 21 mm  
 Motor : 14.4 VDC  
 Reservoir capacity :  
 45 cc  
 Force at die face :  
 70 kN

**SIZE**

421 (L) x 95 (H) x 70 (W) mm

**WEIGHT**

4.2 kg (without battery)

**ACCESSORIES**

Shoulder strap,  
 Steel carrying case,  
 Battery and Charger

**REMARKS**

- \* Battery operated tool with In-line design
- \* Inter chargeable cutting and Crimping Jaws
- \* LED light for low light work
- \* Light weight slim design

Optional attachments

**SL-6CJ Crimping Jaw**

Specification:

Crimping capacity  
 Up to 240 mm<sup>2</sup> (Cu/Al)  
 185 mm<sup>2</sup> (ACSR)

**SL-CH Cu/Al Cutter Attachment**

Specification:

Cutting capacity  
 Up to 300 mm<sup>2</sup> Cu  
 240 mm<sup>2</sup> Al

**SL-ACSR Cutter Attachment**

Specification:

Cutting capacity  
 Up to O.D. 20 mm  
 single steel core ACSR use only

**FEATURES**

The SL-NDM was developed for a more robust, higher-quality, REC-style In-line tool.

The SL serie are designed increase durability.

The SL-NDM is for superior in durability compared with previous model.

The SL has a choice of jaw types, the SL-6CJ Jaw for crimping. For cutting, switch to the SL-CH and SL-ACSR Cutter Attachments. Quickly change between head types with the pull-pin design.

LED light illuminating dark areas.  
 The SL-6CJ Jaw accommodates 6 ton U-type dies for applying compression fittings to copper, aluminum, and ACSR conductors widely used in the industry.



Simple Spring Loaded Twist Pin Design for Changing Head

MODEL No.

# ECO-50/ ECO-50M

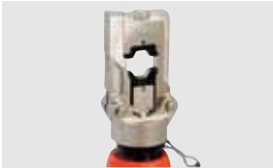
## Battery Operated Compression Tool



ECO-50 with BP-70MH



ECO-50M with BP-70MH



ECO-50



### FEATURES

The ECO-50 is a stick type battery operated compression tool accepts BEKU type dies up to Cu150mm<sup>2</sup> of hexagonal compression.

This portable lightweight rechargeable compression tool is easier to access tight cable joints in narrow control panel.

The number of crimps per charge for 150mm<sup>2</sup> terminal : 67 crimps / BP-70MH.

The ECO-50M has quick release pins which allow the operator to change between compression and cutter head in one minute without losing springs or pins to lose.

The optional 50AT-25YC cutter attachment can slice nonferrous cables up to 25mm.

### SPECIFICATIONS

Ram stroke : 15 mm  
Motor : 14.4 VDC

Applicable Hex Compression :  
Max. 150mm<sup>2</sup> Cu Lugs  
Force at die face :  
52 kN

### SIZE

397 (L) x 79 (H) x 70 (W) mm

### WEIGHT

2.3kg (without battery)

### ACCESSORIES

Steel carrying case,  
Battery and charger

### REMARKS

- Dies are sold separately.
- \* Fully automatic, self-contained
- \* Battery Operated Compression Tool
- \* In-line design for one hand operation
- \* 14.4 VDC powerful motor
- \* Right or Left handed operation
- \* Accepts Beku type dies
- \* Optional DC charger
- \* Quality backed by ISO9001
- \* 50AT-25YC cutter attachment as an option



50AT-25YC

MODEL No.

**REC-50M/  
LIC-50**

The new powerful magnetic motor with high torque/  
Max cutting diameter : Nonferrous 50 mm

**SPECIFICATIONS**

Drive unit : 14.4V DC Motor

**SIZE**

110 (L) x 365 (H) x 130 (W) mm

**WEIGHT**

2.1 kg (without battery)

**ACCESSORIES**

Double molded carrying case,  
Battery and charger

**REMARKS**

Max cutting capacity :

Aluminum : 750mm<sup>2</sup>

Copper : 500mm<sup>2</sup>

Required battery type

REC-50M : BP-70E, 70EI, 70MH, 80LI  
(insertion type)

LIC-50 : BP-14LN

(slide on type)



REC-50M shown with BP-70MH



LIC-50 shown with BP-14LN

**FEATURES**

The new powerful magnetic motor with high torque offers superior performance to the REC-50.

They were specifically designed for cutting the toughest copper and aluminum cables in a limited amount of space. Cuts are clean with minimal cable distortion and comfortably fits into a gloved hand. Repetitive ratcheting movement is entirely eliminated. Just a squeeze of the rocker arm trigger is all it takes to cut .

This powerful gear reduction motor pulls a movable blade through tough copper cable.

They are equipped with an electronic circuit for overloading protection.



REC-50M



MODEL No.

# REC-54ACSR/ LIC-54ACSR

Maximum cutting diameter : capacity ACSR 550/70



REC-54ACSR shown with BP-80LI



LIC-54ACSR shown with BP-14LN

## SPECIFICATIONS

Drive unit : 14.4V DC Motor

## SIZE

130 (L) x 398 (H) x 109 (W) mm

## WEIGHT

4.7 kg (without battery)

## ACCESSORIES

 Double molded carrying case,  
Battery and charger

## REMARKS

Max cutting capacity

 ACSR : AL550  $\varnothing$ 32.4/ST70  $\varnothing$ 10.8

 Required battery type  
REC-54ACSR : BP-70MH, 80LI  
(insertion type)

 LIC-54ACSR : BP-14LN  
(slide on type)

## FEATURES

The new powerful magnetic motor with high torque offers superior performance to the REC-54ACSR.

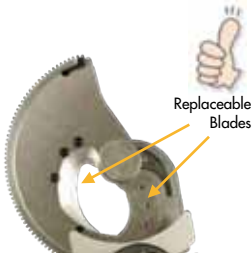
They were specifically designed for cutting overhead lines with steel core cables. Cuts are clean with minimal cable distortion and comfortably fits into a gloved hand. Repetitive ratcheting movement is entirely eliminated. Just a squeeze of the rocker arm trigger is all it takes to cut.

This powerful gear reduction motor pulls a movable blade through tough ACSR cable.

They are equipped with an electronic circuit for overloading protection.

The grooves at moving and stationary frame collects aluminum debris to prevent blade jamming.\*

Replaceable cutting blades gives ease for maintenance and save the cost for blade replacement.



REC-54ACSR



MODEL No.

# REC-54ACM/ LIC-54AC

Maximum cutting diameter : Nonferrous 54 mm

## SPECIFICATIONS

Drive unit : 14.4V DC Motor

## SIZE

110 (L) x 365 (H) x 109 (W) mm

## WEIGHT

2.6 kg (without battery)

## ACCESSORIES

Double molded carrying case,  
Battery and charger

REC-54ACM shown with BP-70MH



LIC-54AC shown with BP-14LN



REC-54ACM



## FEATURES

The new powerful magnetic motor with high torque offers superior performance to the REC-54AC.

They were specifically designed for cutting the toughest copper and aluminum cables in a limited amount of space. Cuts are clean with minimal cable distortion and comfortably fits into a gloved hand. Repetitive ratcheting movement is entirely eliminated. Just a squeeze of the rocker arm trigger is all it takes to cut.

This powerful gear reduction motor pulls a movable blade through tough copper cable.

They are equipped with an electronic circuit for overloading protection.

## REMARKS

Max cutting capacity

Aluminum : 750mm<sup>2</sup>Copper : 500mm<sup>2</sup>

Required battery type

REC-54ACM : BP-70E, 70EI, 70MH, 80LI  
(insertion type)

LIC-54AC : BP-14LN

(slide on type)



MODEL No.

# REC-65M/ LIC-65

The new powerful magnetic motor with high torque/  
Max cutting diameter : Nonferrous 65 mm



REC-65M shown with BP-80LI



LIC-65 shown with BP-14LN



REC-65M



## FEATURES

The new powerful magnetic motor with high torque offers superior performance.

Powerful gear reduction motor pulls a movable blade through tough copper cable.

The new large 65mm opening cutter design provides more power to cut through large cable than existing models. .

It is equipped with an electronic circuit board for overloading protection.

## SPECIFICATIONS

Drive unit : 14.4V DC Motor

## SIZE

110 (L) x 365 (H) x 130 (W) mm

## WEIGHT

2.7 kg (without battery)

## ACCESSORIES

Double molded carrying case,  
Battery and charger

## REMARKS

Max cutting capacity :

Polyethylene Power Cable  
600V-CV600mm<sup>2</sup> (ø41)  
Polyethylene Power Cable  
600V-CVT325mm<sup>2</sup> 3core (ø65)  
Polyethylene Power Cable 6600V-CV  
600mm<sup>2</sup> (ø47)  
Polyethylene Power Cable 6600V-CVT  
200mm<sup>2</sup> 3core (ø66)  
Soft Copper Cable 600V-IV500mm<sup>2</sup>  
(ø35)  
Multi-core vinyl insulation cable  
VVR250mm<sup>2</sup> 4core (ø65)  
4x240mm<sup>2</sup> Al cable (up to ø65)  
4x185mm<sup>2</sup> Cu cable (up to ø65)

Required battery type  
REC-65M : BP-70E, 70EI, 70MH, 80LI  
(insertion type)

LIC-65 : BP-14LN  
(slide on type)

MODEL No.

**LIC-5431**Accepts existing **12 ton** U-type dies

LIC-5431 shown with BP-14LN

**SPECIFICATIONS**

Ram stroke : 31 mm  
 Motor : 14.4 VDC

Reservoir capacity :  
 135 cc  
 Force at die face :  
 106 kN

BP-14LN Battery use only.

**SIZE**

392 (L) x 315 (H) x 84 (W) mm

**WEIGHT**

6.1 kg (without battery)

**ACCESSORIES**

Shoulder strap,  
 Double molded carrying case,  
 Battery and charger

**REMARKS**

Dies are sold separately.  
 Specify the manufacturer's die and connector numbers.  
 Specify charger input voltage.

- \* Battery operated pistol type compression tool
- \* Rapid ram advance mechanism
- \* Well balanced design
- \* 31 mm Jaw opening C head
- \* 14.4VDC powerful motor
- \* Right or Left handed operation
- \* Accepts all dies used for Alcoa, Burnady, T&B, Klauke, Cembre and Blackburn 12 ton U-type dies
- \* Quality backed by ISO9001

**FEATURES**

The LIC-5431 is a 12 ton class compression tool operated by eco-friendly Li-Ion battery.

This tool accommodates 12 ton U-type dies for applying compression fittings to copper aluminum and ACSR conductors widely used in the industry.

Pistol type 12 ton tool makes it easier for working in tight space or in the control box.

The trigger switch and return button are activated by only one hand so that other hand is always free to hold working material.

Electronic circuit board with LED indicates compression status and battery capacity.

The LIC-5431 has electronic memory function to record repair history by connecting optional "ROBO-RW" analyzer.



MODEL No.  
**LIC-5510**

Accepts existing **12 ton** U-type dies



LIC-5510 shown with BP-14LN

### SPECIFICATIONS

Ram stroke : 42 mm  
Motor : 14.4 VDC

Reservoir capacity : 135cc  
Force at die face : 106 kN

BP-14LN Battery use only.

### SIZE

419 (L) x 320 (H) x 84 (W) mm

### WEIGHT

7.1 kg (without battery)

### ACCESSORIES

Shoulder Strap  
Double molded carrying case,  
Battery and charger



### FEATURES

The LIC-5510 is an environment friendly Li-Ion battery operated 12 ton class compression tool to accommodate 12 ton U-type dies for applying compression fittings to copper, aluminum and ACSR conductors, widely used in the industry.

Pistol type 12 ton tool made it easier for working in tight space or in the control box.

The trigger switch and return button are activated by only one hand so that other hand is always free to hold working material.

Electronic circuit board with LED indicates compression status and battery capacity.

The LIC-5xx series tool has electronic memory function to record repair history by connecting optional "ROBO-RW" analyzer.

### REMARKS

Dies are sold separately.

- \* Battery operated pistol type compression tool
- \* Rapid ram advance mechanism
- \* Well balanced design
- \* 42mm Jaw opening C head
- \* 14.4VDC powerful motor
- \* Right or Left handed operation
- \* Accepts all dies used for Alcoa, Burndy, T&B, Klauke, Cembre and Blackburn 12 ton U-type dies
- \* 350 degree swivel head
- \* Quality backed by ISO9001

MODEL No.

**LIC-5630**

Up to 32mm outer diameter connector

**SPECIFICATIONS**

Ram stroke : 29 mm  
Opening between nibs : 32 mm

Reservoir capacity :  
100 cc  
Output force :  
60 kN

BP-14LN Battery use only.

**SIZE**

368 (L) x 272 (H) x 71 (W) mm

**WEIGHT**

4.7 kg (without battery)

**ACCESSORIES**

Shoulder strap,  
Double molded carrying case,  
Battery and charger

**REMARKS**

- \* Battery operated dieless crimping tool
- \* Rapid ram advance mechanism
- \* Light weight aluminum forged head
- \* LED lights when battery capacity becomes low
- \* Light weight and slim design
- \* Pistol type housing
- \* 14.4VDC powerful motor
- \* Right or Left handed operation
- \* 360 degree swivel head

**FEATURES**

The LIC-5630 is an environment friendly Li-Ion battery operated hand held dieless crimping tool used to compress Anderson type connectors up to 500KCM.

Three movable nibs push connectors against the top fixed nib. As a result, four indentations are made into the connector.

This tool is designed to install Anderson type connectors. Consult your connector manufacturer for dieless applications.



LIC-5630 shown with BP-14LN



MODEL No.  
**LIC-S524**

Cuts steel materials as well as cables



LIC-S524 shown with BP-14LN

### SPECIFICATIONS

Ram stroke : 24 mm  
Motor : 14.4 VDC

Reservoir capacity :  
100 cc  
Output force :  
84 kN

BP-14LN Battery use only.

### SIZE

315 (L) x 304 (H) x 84 (W) mm

### WEIGHT

4.4 kg (without battery)

### ACCESSORIES

Shoulder strap,  
Double molded carrying case,  
Battery and charger,

### FEATURES

The LIC-S524 is a cable cutter operated by eco-friendly Li-Ion battery to cut the toughest steel used in construction today.

With the pull of the trigger, you can cut ACSR cables up to 24mm, and guy wires to 20mm.

The specially designed flip-top latch and rotating head provide exceptional ease of use and maneuverability in tight working quarters.

The LIC-S524 has an overload bypass which will kick out when tool reaches 84kN of output.

### REMARKS

Cutting capacity : # of cuts

Material		BP-14LN
Wire rope 6x7	: 18mm	82
6x12	: 24mm	105
6x19	: 24mm	67
Soft steel bar	: 20mm	90
Re-bar	: 16mm	120
Cu strands	: 24mm	120
Al strands	: 24mm	150
ACSR	: 24mm	142
Guy wire 1x7	: 20mm	127
1x19	: 20mm	120
CCP cable	: N/A	



MODEL No.

**LIC-S540**

Cuts steel materials as well as cables.

**SPECIFICATIONS**

Ram stroke : 40 mm  
 Motor : 14.4 VDC

Reservoir capacity :  
 135cc  
 Output force :  
 68 kN

BP-14LN Battery use only.

**SIZE**

441 (L) x 325 (H) x 85 (W) mm

**WEIGHT**

6.1 kg (without battery)

**ACCESSORIES**

Shoulder strap,  
 Double molded carrying case,  
 Battery and charger

**REMARKS**

Cutting capacity : # of cuts

Material		BP-14LN
Wire rope 6 x 7	: 22mm	60
6 x 12	: 22mm	82
6 x 19	: 22mm	45
Soft steel bar	: 20mm	60
Re-bar	: 16mm	60
Cu strands	: 40mm	42
Al strands	: 40mm	52
ACSR	: 38mm	45
Guy wire 1 x 7	: 15mm	120
1 x 19	: 20mm	72
CCP cable	: N/A	



LIC-S540 shown with BP-14LN

**FEATURES**

The LIC-S540 is a cable cutter operated by eco-friendly Li-Ion battery to cut the ACSR cables used in transmission line construction work. It is now equipped with rapid ram advance mechanism for faster operation.

With the pull of the trigger, you can cut ACSR cables up to 38mm, guy wires to 20mm, and wire ropes to 22mm.

The rotating head provides exceptional ease of use and maneuverability in tight working quarters.

The lock pin type head allows the cutter head to open widely for easy insertion of cutting material.

The LIC-S540 has an overload bypass which will kick out when tool reaches 68kN of output.



MODEL No.

# REC-3410

 Accepts existing **12 ton** U-type dies


REC-3410 shown with BP-70E



## SPECIFICATIONS

Ram stroke : 25 mm  
(Jaw opening)  
Motor : 14.4 VDC

Reservoir capacity :  
170 cc  
Force at die face :  
106 kN

## SIZE

395 (L) x 275 (H) x 90 (W) mm

## WEIGHT

7.5 kg (without battery)

## ACCESSORIES

Shoulder strap, Carrying case,  
Battery and charger

## FEATURES

The REC-3410 is the battery operated 12 ton tool to accommodate 12 ton U-type dies widely used in the industry.

Portability and handling are improved and it now features a larger handle opening with a rocker type advance/retract switch located on top of the handle for 1-finger operation. It also incorporates a built-in foot base with finger indents for easier handling when working overhead or under-ground.

The rapid advance system reduces tool run time, giving you more crimp cycles per battery charge.

The number of crimps per charge for maximum conductor :  
55 crimps / BP-70MH

This tool is designed to accommodate U-type dies for applying compression fittings to copper, aluminum and ACSR conductors.

## REMARKS

Dies are sold separately.  
Specify the manufacturer's die and connector numbers.  
Specify charger input voltage.

- \* Battery operated compression tool
- \* 25 mm jaw opening C head
- \* LED lights when battery capacity becomes low
- \* Well balanced & compact design
- \* Larger handle opening with rocker-type switch
- \* Built-in foot base with finger indents
- \* New rapid advance system
- \* 14.4 VDC powerful motor
- \* Right or left handed operation
- \* Accepts all dies used for Alcoa, Burndy, T&B, Klauke, Cembre and Blackburn 12 ton U-type dies
- \* 350 degree swivel head
- \* Optional DC charger
- \* Quality backed by ISO9001



MODEL No.

**REC-3430A**Accepts existing **12 ton** U-type dies**SPECIFICATIONS**

Ram stroke : 30 mm  
(Jaw opening)  
Motor : 14.4 VDC

Reservoir capacity :  
170 cc  
Force at die face :  
106 kN

**SIZE**

430 (L) x 273 (H) x 90 (W) mm

**WEIGHT**

8.0 kg (without battery)

**ACCESSORIES**

Shoulder strap, Carrying case,  
Battery and charger

**REMARKS**

Dies are sold separately.  
Specify the manufacturer's die and  
connector numbers.  
Specify charger input voltage.

- \* Battery operated compression tool
- \* 30 mm jaw opening C head
- \* LED lights when battery capacity becomes low
- \* Well balanced & compact design
- \* Larger handle opening with rocker-type switch
- \* Built-in foot base with finger indents
- \* New rapid advance system
- \* 14.4 VDC powerful motor
- \* Right or left handed operation
- \* Accepts all dies used for Alcoa, Burndy, T&B, Klauke, Cembre and Blackburn 12 ton U-type dies
- \* 350 degree swivel head
- \* Optional DC charger
- \* Quality backed by ISO9001



REC-3430A shown with BP-70MH

**FEATURES**

The REC-3430A is the battery operated 12 ton class compression tool to accommodate 12 ton U- type dies widely used in the industry.

Portability and handling are improved and it now features a larger handle opening with a rocker type advance/retract switch located on top of the handle for 1-finger trigger operation. The handle opening and rocker type switch is large enough for gloved hands. It also incorporates a built-in foot base with finger indents for easier handling when holding the tool with both hands

This tool is designed to accommodate U-type dies for applying compression fittings to copper, aluminum and ACSR conductors.

New head design completely eliminated pinch points.



MODEL No.

# REC-3510A

 Accepts existing **12 ton** U-type dies


REC-3510A shown with BP-70MH



## SPECIFICATIONS

Ram stroke : 42 mm  
(Jaw opening)  
Motor : 14.4 VDC

Reservoir capacity :  
170 cc  
Force at die face :  
106 kN

## SIZE

454 (L) x 273 (H) x 90 (W) mm

## WEIGHT

8.7 kg (without battery)

## ACCESSORIES

Shoulder strap, Carrying case,  
Battery and Charger

## FEATURES

The REC-3510A is the third generation of this model ROBO tool and has the largest jaw opening of all of our battery operated 12 ton compression tools.

The opening is 42 mm which will accept mid-span copper and aluminum sleeves and cables up to 750 KCM. This tool accepts all "U" type dies available on the market.

Portability and handling are made easier because the REC-3510A system is self contained and compact. It features a larger handle opening with a rocker-type advance/retract switch located on top of the handle for 1-finger trigger operation.

This tool is designed to accommodate U-type dies for applying compression fittings to copper, aluminum and ACSR conductors.

New head design completely eliminated pinch points.

## REMARKS

Dies are sold separately.  
Specify charger input voltage.

- \* Battery operated compression tool
- \* 42 mm jaw opening C head
- \* LED lights when battery capacity becomes low
- \* Well balanced & compact design
- \* Larger handle opening with rocker-type switch
- \* Built-in foot base with finger indents
- \* New rapid advance system
- \* 14.4 VDC powerful motor
- \* Right or left handed operation
- \* Accepts all dies used for Alcoa, Burndy, T&B, Klauke, Cembre and Blackburn 12 ton U-type dies
- \* 350 degree swivel head
- \* Optional DC charger
- \* Quality backed by ISO9001

MODEL No.

# REC-3610

Accepts existing 15 ton P type dies  
as well as 12 ton U-type dies

## SPECIFICATIONS

Ram stroke : 50mm  
Motor : 14.4 VDC

Reservoir capacity :  
170cc  
Force at die face :  
134 kN

## SIZE

480 (L) x 275 (H) x 90 (W) mm

## WEIGHT

10.0 kg (without battery)

## ACCESSORIES

Shoulder strap, Steel carrying case,  
Battery and Charger



REC-3610 shown with BP-70MH

## REMARKS

Dies are sold separately.  
Specify charger input voltage.

- \* Battery operated compression tool
- \* 50mm Jaw opening closed head
- \* LED lights when battery capacity becomes low
- \* Well balanced & compact design
- \* Larger handle opening with rocker-type switch
- \* Built-in foot base with finger indents
- \* New rapid advance system
- \* 14.4 VDC powerful motor
- \* Right or Left handed operation
- \* Accepts 15 ton Burndy P type dies
- \* Accepts 12 ton U-type dies when used with die adapter
- \* 180 degree swivel head
- \* Optional DC charger
- \* Quality backed by ISO9001

## FEATURES

The REC-3610 has the largest output and piston travel among all of our battery operated compression tools.

The piston travel is 54mm which accepts mid-span copper and aluminum sleeves and cables up to 1,500 KCM. This tool accepts all "U" type dies when used with an adapter.

Portability and handling are made easier because the REC-3610 system is self-contained and compact. It features a new, larger handle opening with a rocker type advance/retract switch located on top of the handle for one finger trigger operation.

The number of crimps per charge for maximum size conductor :  
55 crimps / BP-70E



MODEL No.

# REC-S3550G

Cuts steel materials as well as cables  
up to 54mm



REC-S3550G with BP-80LI



## FEATURES

The REC-S3550G is designed to cut the toughest steel used in construction site.

Portability and handling are made easier because the REC-S3550S is self-contained and compact.

The rocker-type advance/retract switch located on top of the handle allows to stop and advance at any desired position with 1 finger operation

Guillotine type cutting for less jamming than scissors type cutting.

This cutter is suitable for ACSR cable.

The head shear plate instead of one complete head unit as previous REC-S3550 gives low replacement cost.

## SPECIFICATIONS

Ram stroke : 56 mm  
 Motor : 14.4 VDC  
 Reservoir capacity : 280 cc  
 Output force : 120 kN

## SIZE

494 (L) x 275 (H) x 90 (W) mm

## WEIGHT

9.9 kg (without battery)

## ACCESSORIES

Shoulder strap,  
 Steel carrying case,  
 Battery and charger

## REMARKS

Cutting of piano wire is prohibited.

Cutting capacity  
 \* Wire rope 6x7 : 25mm  
 \* Wire rope 6x12 : 30mm  
 \* Wire rope 6x19 : 30mm  
 \* Soft steel bar : 22mm  
 \* Reinforcing rod : 19mm  
 \* Cu strands : 54mm  
 \* Al strands : 54mm  
 \* ACSR : 54mm  
 \* Guy wire 1x7 : 15mm  
 \* Guy wire 1x9 : 20mm  
 \* CCP cable : N/A

MODEL No.

# REC-P600 REC-Li600P

Up to 10,000 psi (700 bar) battery operated hydraulic pump.



REC-P600 with EP-431H

## SPECIFICATIONS

Motor : 14.4 D.C.

Oil Delivery :

1.3 liters / min at low pressure  
(300 psi)0.2 liters / min at low pressure  
(10,000 psi)

Reservoir Volume : 600 cc

## SIZE

395 (H) x 242 (L) x 204 (W) mm

## WEIGHT

7.8 kg (without battery)

## ACCESSORIES

Shoulder strap

## OPTION

Back harness

Carrying Bag



Back harness



Back harness



Carrying Bag

## FEATURES

The REC-P600 / REC-Li600P are battery powered hydraulic pumps which have a 600cc reservoir capacity. They are ideal for overhead line maintenance work where remote operation is required.

Fitted remote control that allows the operator to advance, retract and stop the piston at any desired position.

Our new "Dual Hydraulic Powered" system allows to work off of one or two batteries.

600cc reservoir volume is sufficient to operate up to a 60ton compression head.

## REMARKS

Approx. number of compressions per charge with BP-70E.

45 - Using a 12ton head (EP-410H) on 150 mm Cu sleeve.

20 - Using a 30ton head (EP-520C) on 500 mm<sup>2</sup> Cu terminal.

Required battery type

REC-P600: BP-70E,70EI,70MH, 80LI (insertion type)

REC-Li600P:BP-14LN (slide on type)

MODEL No.

**REC-55PDF**

Punching capacity : 3.2 mm thick mild steel or 1.6 mm stainless steel with 115.5 mm (4") holes



REC-55PDF shown with BP-70EI



Example of punch set

**SPECIFICATIONS**

Ram stroke : 22 mm  
Motor : 14.4 VDC

Reservoir capacity :  
100 cc  
Output force :  
73 kN

**SIZE**

328 (L) x 254 (H) x 70 (W) mm

**WEIGHT**

3.8 kg (without battery)

**ACCESSORIES**

Standard Accessories:  
Shoulder strap,  
Double molded carrying case,  
Setting threads (3/4 and 3/8),  
Punches are sold separately,  
Collar (L, M, S, SS)  
Battery and charger,  
※Punch set is sold separately.

**FEATURES**

The REC-55PDF is a battery operated punch driver with swivel head for easy access to tight enclosed control panels. It gives clean perforation through 3.2mm thick mild steel or 1.6mm stainless steel with 115.5mm (4") holes.

This tool is ideal for working on control panels.

See SH-10(A)P and SH-10(B)P page 95 for punch sizes.

The number of perforations per charge for 3" hole on 3.2mm steel :  
52 perforations / BP-70MH

**REMARKS**

Specify charger input voltage.

Ordering information :

REC-55PDF	standard accessories only
REC-55PDF(A)	above plus A19 to A51 punch set
REC-55PDF(B)	above plus B16 to B54 punch set

Detail information of punch is shown on page of SH-10 (Page 95)

MODEL No.

**SB-3UK**

## Shear Bolt Impact Wrench



SB-3UK

**SPECIFICATIONS**

Torque : 196 N.m  
 Speed : 0~2,200 rpm  
 Motor : 14.4 VDC  
 Socket Retainer : 1/2"

**SIZE**

350 (L) x 180 (H) x 75 (W) mm

**WEIGHT**

1.6 kg (without battery)

**ACCESSORIES**

Double molded carrying case,  
 Battery and charger



SB-3UK

**FEATURES**

The SB-3UK is a battery operated impact wrench especially designed to torque down the shear bolts for electrical connection use.

The tool features a unique shape to reduce its length for easy access to tight space.

It develops 196 N·m or 143 ft·lbs of torque and features variable speed to 2,200 rpm.

As it was designed for electrical work, there is no opening for air circulation. Continuous use will overheat and damage the tool. Rest the tool after 20 bolts are sheared.

**REMARKS**

Specify charger input voltage.

\* Battery operated impact wrench for shear bolts

\* 196 N·m or 143 ft·lbs torque

\* Variable speed to 2,200 rpm

\* 1/2" square drive

\* Short body length for tight space application

\* Well balanced and light weight

\* Regular E-Robo series 14.4 V battery

\* Quality backed by ISO 9001 Quality Management System



# IZUMI LITHIUM-ION BATTERY TECHNOLOGY

Life expectancy is more than 300% in Comparison with 3Ah BP-70MH Ni-Metal battery



**BP-80LI**

New insertion type battery  
Offers long-lasting performance and durability  
LED display: Displays remaining battery capacity (BP-80LI Only)



**BP-14LN**

Slide on type battery

Light weight

No Memory effect

Low self discharge rate

## Multi-Voltage charger

### CH-100

For AC/DC use  
Charge all IZUMI 14.4V insertion type batteries



### CH-25 LNW

Quick charger  
25min 80%  
40min 100%  
Only for BP-14LN



MODEL No.

**BP-80LI**

3.0Ah Lithium Ion Battery Pack with LED display



BP-80LI

**SPECIFICATIONS**

Voltage : 14.4V  
 Nominal Capacity: 3.0Ah  
 Type : Lithium Ion with LED display

Charge time : CH-100 Charger  
 70 minutes 80%  
 90 minutes 100%

**SIZE**

100 (L) x 137 (H) x 75 (W) mm

**WEIGHT**

580 g

**FEATURES**

Developed specifically to be used with all Izumi insertion type battery operated Tools.

BP-80LI has 300% longer life compared to BP-70E, BP-70MH etc.

BP-70E : 600 recharges  
 BP-70MH : 600 recharges  
 BP-80LI : more than 1,800 recharges

LED shows remaining battery capacity

**REMARKS**

- \* High Capacity
- \* 50% longer running time.
- \* The battery will need to be fully charged before first time use.
- \* No Memory effect.
- \* Impact resistant housing.
- \* Minimal self-discharge.
- \* Non Hazardous Chemistry and environmentally safe.



BP-80LI with CH-100

MODEL No.  
**CH-100**

Multi Voltage Tri-chemistry battery Charger



CH-100

**SPECIFICATIONS**

Input voltage  
: 100-240V with AD-ACW Adaptor  
: 12VDC or 24VDC with AD-DC Adaptor

**SIZE**

130 (L) x 94 (W) x 79.5 (H) mm

**WEIGHT**

0.68 kg (with AD-ACW)



AD-ACW AC Adaptor



AD-DC 12/24V DC Adaptor

**FEATURES**

Developed specifically to be used with all Izumi 14.4V. Insertion type battery packs.

Tri chemistry charger allows for use with Li-ion, Ni Cad and Ni-MH Battery Packs.

Monitors battery temperature and voltage for correct charging.

The refresh button is for reconditioning Nicad and Ni-MH memory effect.

CH-100 is an EMC approved charger in accordance with related CE and EMC directives.

**REMARKS**

Charger time:  
BP-80LI - 90 minutes 100%

BP-70E - 80 minutes 100%

BP-70EI - 80 minutes 100%

BP-70MH - 100 minutes 100%

Charge times are on a completely depleted battery.

MODEL No.

**BP-14LN**

Designed for exclusive use on all LIC series tools  
3.0 Ah Capacity

**SPECIFICATIONS**

Output voltage : 14.4 VDC  
Capacity : 3.0 Ah  
Type : Lithium Ion  
Charge time :  
25 min (80% capacity)  
40 min (100% capacity)

**SIZE**

107 (L) x 63 (H) x 80 (W) mm

**WEIGHT**

570 g



BP-14LN High Capacity Battery

MODEL No.

**CH-25LNW**

Multi-voltage Battery Charger (100-240V)

**SPECIFICATIONS**

Input Voltage: 100-240V AC  
(50/60HZ)

145VA (100V) - 148VA (240)

**SIZE**

230 (L) X 80 (H) X 145 (W) mm

**WEIGHT**

1.6 kg

**CHARGE TIME FOR BP-14LN**

25min. (80% capacity)  
40min. (100% capacity)  
Cannot charge BP-70R, BP-70I, BP-70E,  
BP-70EI and BP-70MH



CH-25LNW

MODEL No.

**EP-150A**

Non-insulated terminals :  
14, 22, 38, 60, 70, 80, 100, 150 mm<sup>2</sup>



EP-150A



Crimped sample

**FEATURES**

The EP-150A is a hydraulic indenting tool for non-insulated terminals and sleeves up to 150mm<sup>2</sup>.

When rolled-and-blazed connectors are installed, indenting crimp is applied. Indentation is made on the seam of connector for appropriate mechanical and electric characteristics of connected conductors.

The EP-150A is so designed that connected conductors meet JIS requirement as well as requirement for the tool itself.

**SPECIFICATIONS**

- \* Two stage pumping
- \* Relief valve
- \* Reservoir capacity : 83cc

Output force :  
90 kN

**SIZE**

512 (L) mm

**WEIGHT**

3.7 kg

**ACCESSORIES**

Dedicated Indentor :  
14, 22, 38-70,  
80-150 mm<sup>2</sup> (4 pieces),  
Double molded  
carrying case

**REMARKS**

- \* Unique two stage pumping for rapid ram advance
- \* Rotary nest for easy setting

MODEL No.

**12A**

Non-insulated terminals : 8, 14, 22, 38, 60, 70, 80,  
100, 150, 180, 200, 325 mm<sup>2</sup>

**SPECIFICATIONS**

Maximum input pressure: 700 bar  
Oil volume required : 90 cc

Output force : 226 kN

**SIZE**

280 (L) mm

**WEIGHT**

7.5 kg

**ACCESSORIES**

Steel carrying case  
with die tray



12A



Crimped sample

**FEATURES**

The 12A is a hydraulic indenting head for non-insulated terminals and sleeves up to 325mm<sup>2</sup>.

When rolled-and-blazed connectors are installed, indenting crimp is applied. Indentation is made on the seam of connector for appropriate mechanical and electric characteristics of connected conductors.

The 12A is designed so that connected conductors meet JIS requirement as well as requirement for the tool itself.

This tool requires an external 700 bar hydraulic pump.

**REMARKS**

Standard dies included in the set :

Indentor : 22-60, 70-100,  
150-325 mm<sup>2</sup> (3 pieces)  
Nest : 60, 80, 100, 150, 180, 200,  
325 mm<sup>2</sup> (7 pieces)

Optional dies sold separately :  
Indentor : 8-14 mm<sup>2</sup>  
Nest : 8, 14, 22, 38, 70 mm<sup>2</sup>

MODEL No.  
**AC-5ND**

Insulated terminals : 2.0 mm<sup>2</sup> (blue)



AC-5ND



Example of AC-5ND Jaws

**FEATURES**

- \* Capable of crimping several types of terminals up to 5.5mm<sup>2</sup> with interchangeable jaws.
  - \* Bench mounted, air operated AC-5ND is suitable for continuous crimping for production line.
- AF2 foot pedal adjusts jaw butting time by air timer so that butting time is regulated regardless of operator. This will prevent spring back of crimped terminal and maintain constant crimp heights.

**SPECIFICATIONS**

Applicable air pressure :  
0.48~0.58 Mpa  
Air consumption : 34 liters/min at 30 crimps/min  
Output force :  
12.7 kN at 0.48 Mp air pressure

**SIZE**

215 (L) x 135 (H) x 90 (W) mm

**WEIGHT**

2.7 kg with Foot pedal

**ACCESSORIES**

Standard foot pedal  
Jaws are sold separately

**REMARKS**

Optional Jaw

Jaw #            Applicable terminals

- # 1 Jaw : Non-insulated 1.25, 2, 5.5 mm<sup>2</sup>
- # 3 Jaw : Insulated 1.25 mm<sup>2</sup>
- # 4 Jaw : Insulated 2 mm<sup>2</sup>
- # 5 Jaw : Insulated 5.5 mm<sup>2</sup>
- # 7A Jaw : Closed End 1.3-3, 2-6 mm<sup>2</sup>
- F-200 Jaw : Tab 0.75-1.25, 2 mm<sup>2</sup>
- Cutter Jaw : Cu, Al wire 7 mm O.D.



MODEL No.

**15B**

T-11 to T-122 Izumi C-Connectors

**SPECIFICATIONS**

Two stage Pumping  
 Reservoir capacity : 83 cc  
 Ram stroke : 15 mm

Force at die face :  
 59 kN

**SIZE**

465 (L) mm

**WEIGHT**

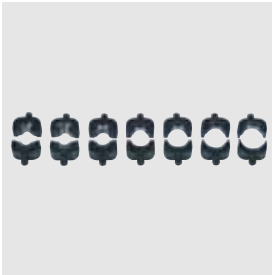
3.0 kg

**ACCESSORIES**

T-20, T-26, T-44, T-60,  
 T-76, T-98, T-122 dies

Double molded carrying case

15B



Standard die sets (7 sets)

**FEATURES**

The 15B hand hydraulic tool was designed to accommodate compressing Izumi C-Connectors up to T-122.

Light weight, slim design allows installation of C-Connectors in tight quarters.

Two stage pumping system minimizes pumping operation.

Rubber protected C Head and pump handle as well as fiberglass handle protect from accidental flash over.

**REMARKS**

Dies for smaller size connectors and non-insulated terminals available.

\* Two stage pumping action for rapid ram advance

\* Rubber C head cover for protection of accidental flash over

\* Fiberglass handle (Body handle)

\* Rubber protected pump handle

\* 180 degree swivel head

\* Optional dies:

1 Dies for C-Connectors  
 T-11 and T-16

2 Dies for non-insulated terminals  
 Indentors : 8-14, 22-60mm<sup>2</sup>  
 Nest : 8, 14, 22, 38, 60mm<sup>2</sup>

MODEL No.

**16B**

T-20 to T-365 Izumi C-Connectors



16B



16B shown with carrying case

**SPECIFICATIONS**

Oil volume required : 44 cc

Ram stroke : 25 mm

Force at die face :

118 kN

**SIZE**

286 (L) mm

**WEIGHT**

4.5 kg

**ACCESSORIES**

T-154, T-190, T-240,

T-288, T-365 dies

Steel carrying case

**FEATURES**

Dies for smaller size C-Connectors and non-insulated terminals available.

Optional dies :

Dies for C-Connectors

T-20, T-26, T-44, T-60, T-76, T-98,

T-122

**REMARKS**

The #16B is a compression head designed to compress Izumi C-Connectors.

It has a 12 metric ton output suitable to compress C-Connectors up to T-365 (365 mm<sup>2</sup>).

An external 700 bar or 10,000 PSI pumping source is required for operation.

It comes with 5 sets of dies.

(T-154, T-190, T-240, T-288 and T-365)

# COMPRESSION TOOLS FOR TAP-OFF CONNECTORS

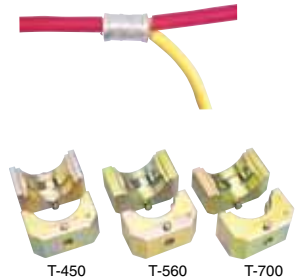
To branch conductor from main run, compress IZUMI TAP-OFF CONNECTORS (C-CONNECTORS) by IZUMI COMPRESSION TOOLS exclusively designed for TAP-OFF purpose.



**No. 15B**  
for up to T-122



**No. 16B**  
for up to T-365



**EP-520C**  
for up to T-700

MODEL	TYPE	OUTPUT (kN)	WEIGHT (kgs)	LENGTH (mm)	APPLICABLE RANGE	DIES	STANDARD ACCESSORIES	REMARKS
NO.15B	Hand Hydraulic	59	3kgs	465	T-11-T-122	T-11*, T-16*, T-20, T-26, T-44 T-60, T-76, T-98, T-122	1. Plastic Case 2. Dies-7 sets(2pcs/set)	Dies for non-insulated terminals are available on request. Indenter: 8-14, 22-60 Nest Dies: 8, 14, 22, 38, 60
NO.16B	Hydraulic Head	118	4.5kgs	284	T-20-T-365	T-20*, T-26*, T-44*, T-60* T-76*, T-98*, T-122*, T-154, T-190, T-240, T-288, T-365	1. Steel Case 2. Dies-5 sets(2pcs/set)	Indenter: 8-14, 22-60, 70-100 Nest Dies: 8, 14, 22, 38, 60, 80, 100
EP-520C	Hydraulic Head	294	17.3kgs	370	T-154-T-700	T-154*, T-190*, T-240*, T-288*, T-365*, T-450*, T-560*, T-700*	1. Steel Case Dies sold separately	

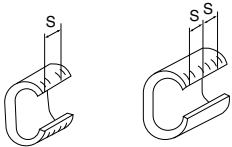
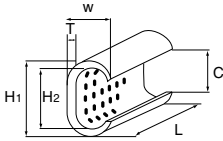
(\*) Marks show OPTIONAL DIES (Available on request)

# IZUMI TAP-OFF CONNECTOR (C-CONNECTOR)

The range of C-CONNECTORS are manufactured in 'C' shaped copper section for connection of main and tap copper conductors.

- Approved by NTT corporation
- Reliability is ensured by passing tests specified by JIS C 2810
- Suitable for connecting copper conductors in both indoor and outdoor such as wiring in building or wiring in tunnel
- Tin plated to avoid rusting

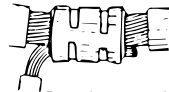
## C-CONNECTOR SPECIFICATIONS



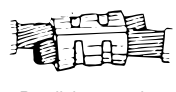
(T-11 ~ T-122)  
except T-20, T-26, T-44

(T-154 ~ T-700)

Connector Size	Dimensions(mm)						Installation		Total sectional area of applicable wire	Per Package
	H <sub>1</sub>	H <sub>2</sub>	W	L	T	C	# of Crimps	S		
T-11	9.5	6.3	6.2	12	1.6	4.0	2	7	7.5~11mm <sup>2</sup>	500
T-16	11.8	7.8	7.8	13	2.0	5.0	2	8	11.5~16	500
T-20	12.8	8.4	9.7	13	2.9	5.1	1	-	14~20	500
T-26	14.7	10.2	10.9	16	3.2	6.5	1	-	21~26	300
T-44	19.0	13.4	14.4	20	4.0	8.5	1	-	27~44	150
T-60	21.0	15.4	15.1	22	4.0	9.7	2	11	45~60	100
T-76	24.4	17.3	17.6	22	5.0	10.8	2	11	61~76	80
T-98	27.8	20.8	18.8	25	5.0	13.8	2	11	77~98	60
T-122	29.8	22.1	21.2	26	5.5	13.5	2	12	99~122	50
T-154	34.0	25.7	24.4	28	6.0	17.0	3	8.5	123~154	50
T-190	37.0	28.5	25.4	35	6.0	17.4	3	10.5	155~190	35
T-240	40.0	30.2	28.5	40	7.0	19.0	3	13	191~240	25
T-288	44.5	34.7	31.1	45	7.0	22.3	3	14.5	241~288	15
T-365	47.5	37.7	34.0	50	7.0	24.8	3	16	289~365	13
T-450	57.0	42.5	41.0	60	10.0	28.0	3	18.5	366~450	10
T-560	62.0	46.0	45.0	65	11.0	31.0	3	20	451~560	8
T-700	68.0	51.0	49.5	70	12.0	34.0	3	21	561~700	6



Branch connection



Parallel connection

## COMBINATION CHART (Applicable range & Tool to be used)

Conductor Tap	2 (φ 1.6)	3.5 (φ 2.0)	5.5 (φ 2.6)	8mm <sup>2</sup>	14	22	30	38	50	60	80	100	125	150	200	250	325
5.5 (φ 2.6)	11	11	11														
8mm <sup>2</sup>	11	16	16														
14		20	20	26	44												
22	26	26	44	44	44	44											
30	44	44	44	44	44	60	60										
38	44	44	44	60	60	60	76	76									
50	60	60	60	60	76	76	98	98	122								
60	76	76	76	76	76	98	98	98	122	122							
80	98	98	98	98	98	122	122	122	154	154	190						
100	122	122	122	122	122	154	154	154	190	190	190	240					
125	154	154	154	154	154	154	190	190	190	190	240	240	288				
150	154	154	154	154	154	190	190	190	240	240	288	288	365				
200	240	240	240	240	240	240	240	240	288	288	365	365	365	365	450		
250			288	288	288	288	288	288	365	365	365	365	450	450	450	560	
325			365	365	365	365	365	365	450	450	450	450	450	560	560	700	700
400							450	450	450	560	560	560	560	560	700	700	
500							560	560	560	560	700	700	700	700	700		
600							700	700	700	700	700						

Figures in Table show Connector Size T-

Tooling Guide:  EH-2C  No.15B  No.16B  EP520C

MODEL No.

**EP-50**

Accepts BEKU type dies  
Up to 150 mm<sup>2</sup> Cu lug

**SPECIFICATIONS**

Ram stroke : 15 mm  
Reservoir capacity :60cc  
Force at die face :  
52 kN

**SIZE**

370 (L) x 130 (W) mm

**WEIGHT**

2.0 kg

**ACCESSORIES**

Double molded carrying case



EP-50



EP-50 (One hand operation to hold connector)

**FEATURES**

The EP-50 was designed to accept dies for BEKU type mechanical tool widely used in European countries.

The light weight and slim design is ideal for close quarter application such as connection in the switch box.

Easy latch type closed head provides easy insertion and removal of connectors. The spring loaded pump handle allows one hand pumping until lower die holds connector between dies.

**REMARKS**

Dies are sold separately.

\* Light weight, compact and slim design

\* Accepts BEKU type dies

\* Yoke and Latch type head for easy die changeover and easy removal of jointed conductor

\* Adjustable ram stroke. 10 - 15mm to minimize pumping action

\* Built-in bypass relief valve

\* Small handle spread

MODEL No.  
**EP-410**

Accepts existing **12 ton** U-type dies



EP-410



Bypass cartridge

**FEATURES**

The EP-410, hand operated compression tool features a two stage rapid advance pumping system. It accepts all U type dies currently manufactured for 12 ton tools on the market.

Consult your connector manufacturer for exact cable, connector and die combinations.

When ordering dies, specify the manufacturer's die and connector numbers.

This tool was designed to accommodate U-type dies for applying compression fittings to copper, aluminum and ACSR conductor.

**SPECIFICATIONS**

Ram Stroke : 25 mm  
Reservoir Capacity : 124 cc

Force at die face :  
106 kN

**SIZE**

585 (L) x 150 (W) mm

**WEIGHT**

6.0 kg

**ACCESSORIES**

Double molded carrying case

**REMARKS**

Dies are sold separately. Specify the manufacturer's die and connector numbers.

- \* Two stage pumping action for rapid ram advance to the connector hold position with minimum pumping action
- \* Replaceable Dropout bypass valve cartridge for easy repair
- \* Fiberglass handles
- \* 180 degree swivel head
- \* Twist handle pressure release
- \* Accepts all dies used for Alcoa, Burndy, T&B, Klauke, Cembre and Blackburn 12 ton compressors
- \* Comes complete with double molded carrying case

MODEL No.  
**EP-431**

Accepts existing **12 ton** U-type dies

### SPECIFICATIONS

Ram stroke : 31 mm  
Reservoir capacity : 145 cc

Force at die face :  
106 kN

### SIZE

610 (L) x 150 (W) mm

### WEIGHT

6.4 kg

### ACCESSORIES

Double molded carrying case



EP-431



EP-431 shown with carrying case

### FEATURES

The EP-431 is unique in that it has a large jaw opening of 31mm, and is able to splice 31mm outer diameter conductors.

This tool was designed for the electrical contractor and electric utility lineman who is confronted with larger cable diameter and larger connectors.

Most of the internal hydraulic components are the same as the EP-410 and the EP-510C.

This tool was designed to accommodate U-type dies for applying compression fittings to copper, aluminum and ACSR conductor.

### REMARKS

Dies are sold separately. Specify the manufacturer's die and connector numbers.

- \* Two stage pumping action for rapid ram advance to the connector hold position with minimum pumping action
- \* Replaceable Dropout bypass valve cartridge for easy repair
- \* Fiberglass handles
- \* 180 degree swivel head
- \* Twist handle pressure release
- \* Accepts all dies used for Alcoa, Burndy, T&B, Klauke, Cembre and Blackburn 12 ton compressors
- \* Comes complete with double molded carrying case J 8 0



MODEL No.  
**EP-510C**

Accepts existing **12 ton** U-type dies



EP-510C



EP-510C shown with PG-610 test gauge

**FEATURES**

The EP-510C, hand operated compression tool features a two stage rapid advance pumping system. It accepts all U-type dies currently manufactured for 12 ton tools on the market.

The jaw opening of 42mm can accept larger splice up to 750KCM. Mid-span sleeve connection can be installed on larger cables and the cable can then be removed through the jaw opening.

Consult your connector manufacturer for exact cable, connector and die combinations.

Specify the manufacturer's die and connector numbers.

This tool was designed to accommodate U-type dies for applying compression fittings to copper, aluminum and ACSR conductor.

**SPECIFICATIONS**

Ram stroke : 42 mm  
Reservoir capacity : 200 cc

Force at die face : 118 kN

**SIZE**

644 (L) x 150 (W) mm

**WEIGHT**

8.0 kg

**ACCESSORIES**

Double molded carrying case

**REMARKS**

Dies are sold separately. Specify the manufacturer's die and connector numbers.

\* Two stage pumping action for rapid ram advance to the connector hold position with minimum pumping action

\* Replaceable Dropout bypass valve cartridge for easy repair  
\* Fiberglass handles

\* 180 degree swivel head

\* Twist handle pressure release

\* Accepts all dies used for Alcoa, Burndy, T&B and Blackburn 12 ton compressors

\* Comes complete with double molded plastic case

MODEL No.  
**UC-6B**

Up to 500KCM Anderson type connector

### SPECIFICATIONS

Ram stroke : 29mm  
Opening between nibs : 32 mm  
Output force : 60 kN

### SIZE

563 (L) mm

### WEIGHT

5.0 kg

### ACCESSORIES

Steel carrying case



UC-6B



Connector in the tool

### FEATURES

The UC-6B dieless crimping tool was designed to install Anderson type connectors up to 500 KCM.

Three movable indenting nibs push connectors against the top fixed nib. As a result, four indentations are made into the connector.

### REMARKS

- \* Replaceable bypass cartridge
- \* External pressure adjustment
- \* Swivel head
- \* Fiberglass handles

#### NOTE :

The UC-6B was designed to crimp Anderson type connectors. Consult your connector manufacturer for dieless applications.

MODEL No.

**UC-6FT2**

Up to 750KCM Anderson type connector



UC-6FT2



UC-6FT2 (Flip-top head opened)

**FEATURES**

The UC-6FT2 flip-top dieless crimping tool was designed to install Anderson type connectors up to 750 KCM.

Three movable indenting nibs push connectors against the top fixed nib. As a result, four indentations are made into the connector.

Larger cables can be inserted and removed by opening the flip-top head.

**SPECIFICATIONS**

Ram stroke : 31.5 mm  
Opening between nibs : 36 mm

Output force : 60 kN

**SIZE**

580 (L) mm

**WEIGHT**

5.6 kg

**ACCESSORIES**

Steel carrying case

**REMARKS**

- \* Replaceable Bypass cartridge
- \* External pressure adjustment
- \* Flip Top Head
- \* Fiberglass handles

**NOTE :**

The UC-6FT2 was designed to crimp Anderson type connectors. Consult your connector manufacturer for dieless applications.

MODEL No.

**EP-50H**

Accepts BEKU type dies  
Up to 150 mm<sup>2</sup> Cu lug

**SPECIFICATIONS**

Ram stroke : 15 mm  
Oil volume required : 18 cc  
Force at die face : 52 kN

**SIZE**

250 (L) mm

**WEIGHT**

1.6 kg

**ACCESSORIES**

Steel carrying case with die tray



EP-50H



Example of dies



EP-50H shown with carrying case

**FEATURES**

The EP-50H was designed to accept dies for BEKU type mechanical tool widely used in European countries.

The light weight and slim design is ideal for close quarter application such as connection in the switch box.  
(Only 1.6 kg)

Positive latch type closed head provides easy insertion and removal of connectors.

This tool requires an external 68.5Mpa hydraulic pump.

**REMARKS**

Dies are sold separately

- \* Light weight, compact and slim design
- \* Accepts BEKU type dies
- \* Yoke and Latch type head for easy die changeover and easy removal of jointed conductor
- \* Adjustable ram stroke. 10 - 15 mm
- \* Single acting 68.5Mpa hydraulic power source required

MODEL No.  
**EP-410H**

Accepts existing **12 ton** U-type dies



EP-410H

**SPECIFICATIONS**

Ram stroke : 25 mm  
 Oil volume required : 42 cc  
 Force at die face :  
 114 kN

**SIZE**

285 (L) mm

**WEIGHT**

3.6 kg

**ACCESSORIES**

Steel carrying case with die tray



Example of dies

**FEATURES**

The EP-410H is a traditional C-head with a one inch jaw opening. It accepts all U-type dies currently used in 12 ton tool on today's market.

A 68.5Mpa or 10,000 PSI external pump is required to operate this tool.

Consult your connector manufacturer for exact cable, connector and die combinations.

**REMARKS**

Dies are sold separately  
 Specify the manufacturer's die and connector numbers.

\* 25mm jaw opening

\* Accepts all dies used for Alcoa, Burndy, T&B, Klauke, Cembre, and Blackburn 12 ton compressors



EP-410H shown with carrying case

This tool was designed to accommodate shell type dies for applying compression fittings to copper, aluminum, and ACSR conductor.

MODEL No.

**EP-H130H**

Accepts existing **12 ton** U-type dies,  
dies for deep indent crimps

**SPECIFICATIONS**

Ram stroke : 28 mm  
Oil volume required : 51 cc  
Force at die face :  
120 kN

**SIZE**

317 (L) mm

**WEIGHT**

4.2 kg

**ACCESSORIES**

Steel carrying case with die tray



EP-H130H



Die holder &amp; U-type dies



EP-H130H shown with carrying case

**FEATURES**

The EP-H130H is a H-head with a one inch jaw opening. It accepts all shell type dies and dies for deep indent crimps currently used in 12 ton tool on today's market.

A 68.5Mpa (10,000 PSI) external pump is required to operate this tool.

Consult your connector manufacturer for exact cable, connector and die combinations.

**REMARKS**

Dies are sold separately. Specify the manufacturer's die and connector numbers.

\* 25mm jaw opening

\* Accepts all dies used for Alcoa, Burndy, T&B, Klauke, Cembre and Blackburn 12 ton compressors, as well as dies for deep indent crimps.

MODEL No.

**EP-431H**Accepts existing **12 ton** U-type dies

EP-431H



EP-431H shown with carrying case

**FEATURES**

The EP-431H is a remote C-head that requires an external 68.5Mpa or 10,000 PSI pumping source for operation. This unit has a larger jaw opening than the EP-410H and EP-H130H.

The 31mm opening allows the user to compress larger splices up to 600KCM.

Consult your connector manufacturer for exact cable, connector and die combinations.

This tool was designed to accommodate U-type dies for applying compression fittings to copper, aluminum, and ACSR conductor.

**SPECIFICATIONS**

Ram stroke : 31 mm  
 Oil volume required : 50 cc  
 Force at die face :  
 106 kN

**SIZE**

340 (L) mm

**WEIGHT**

4.6 kg

**ACCESSORIES**

Steel carrying case with die tray

**REMARKS**

Dies are sold separately. Specify the manufacturer's die and connector number.

\* 31mm jaw opening

\* Accepts all dies used for Alcoa, Burndy, T&B, Klauke, Cembre, and Blackburn 12 ton compressors



MODEL No.

**EP-510HC**Accepts existing **12 ton** U-type dies**SPECIFICATIONS**

Ram stroke : 42 mm  
 Oil volume required : 77 cc  
 Force at die face: 118 kN

**SIZE**

420 (L) mm

**WEIGHT**

5.7 kg

**ACCESSORIES**

Steel carrying case with die tray



EP-510HC



EP-510HC shown with carrying case

**FEATURES**

The EP-510HC is a remote C-head that requires an external 68.5Mpa or 10,000 PSI pumping source. It accepts all U type dies used with conventional 12 ton compression tools.

The larger jaw opening of 42mm accepts conductors and mid-span sleeve connections up to 750KCM.

Consult your connector manufacturer for exact cable, connector and die combinations.

This tool was designed to accommodate U-type dies for applying compression fittings to copper, aluminum, and ACSR conductor.

**REMARKS**

Dies are sold separately. Specify the manufacturer's die and connector numbers.

\* 42mm jaw opening

\* Accepts all dies used for Alcoa, Burndy, T&B, Klauke, Cembre, and Blackburn 12 ton compressors

MODEL No.

**EP-610HS2**

Accepts BURNDY P dies  
as well as **12 ton** U-type dies



EP-610HS2 shown with die adapter



Example of dies



EP-610HS2 shown with carrying case

**SPECIFICATIONS**

Ram stroke : 50 mm  
(45 mm with die adapter)  
Oil volume required : 100 cc  
Force at die face :  
139 kN

**SIZE**

375 (L) mm

**WEIGHT**

6.9 kg

**ACCESSORIES**

Steel carrying case with die tray

**FEATURES**

The EP-610HS2 is a remote C-head that requires an external 68.5Mpa or 10,000 PSI pumping source.

It accepts Burndy P-type dies used in the Y46. When used with PU-Adapter, it will accept all U-type dies used with any 12 ton tool.

Consult your connector manufacturer for exact cable, connector and die combinations.

**REMARKS**

Dies are sold separately. Specify the manufacturer's die and connector numbers.

\* 50mm jaw opening

\*Accepts Burndy P type dies

\*Accepts all dies used for Alcoa, Burndy, T&B, Klauke, Cembre, and Blackburn 12 ton compressors when used with P-U Adapter

MODEL No.

**EP-250H****25 ton** compression head**SPECIFICATIONS**

Ram stroke : 28 mm  
 Oil volume required : 93 cc  
 Force at die face :  
 225 kN

**SIZE**

330 (L) mm

**WEIGHT**

6.5 kg

**ACCESSORIES**

Steel carrying case with die tray

**FEATURES**

The EP-250H is a remote head that requires an external 68.5Mpa or 10,000 PSI pumping source.

It crimps cable lugs to 630mm<sup>2</sup> Copper and 500mm<sup>2</sup> Aluminium

Dies for DIN 46235 are available see the chart for the sizes

Consult your connector manufacturer for exact cable, connector and die combinations.

**REMARKS**

Dies are sold separately. Specify the manufacturer's die and connector numbers.

\* 28mm jaw opening

\* spring loaded new slide pin design secures the pin from damage

DIN No.		Hex A/V	Half A/F	crimp width
K14	Cu50 Al 35	13.8	5.3	41.5
K16	Cu70 Al 50	15.8	6.0	36.2
K18	Cu95 Al 70	18.0	7.0	31.8
K20	Cu120 Al 95	19.8	7.6	28.9
K22	Cu160 Al 120	22.3	8.7	25.6
K25	Cu185 Al 150	24.3	9.6	23.5
K28	Cu240 Al 185	27.8	11.5	20.6
K32	Cu300 Al 240	31.5	13.6	18.1
K34	Cu400 Al 300	33.7	14.5	17.0
K35	Cu500 Al 400	41.5	18.0	13.8
K36	Cu630 Al 500	43.5	18.8	13.1

\*A/V...Across Vertex A/F...Across Flat



MODEL No.  
**LP-430C**

Accepts existing **12 ton** U-type dies



LP-430C

**SPECIFICATIONS**

Jaw Opening : 30mm

Force at die face :  
110 kN

**SIZE**

127 (Dia) x 557 (L) mm

**WEIGHT**

8.65 kg



Example of dies

**FEATURES**

The LP-430C hydraulic tool is directly powered by PTO (Power Take Off) from utility bucket trucks or any vehicle with a low pressure hydraulic circuit having Line pressure of 13.7Mpa or 2,000 PSI and a maximum flow of 35 liters/min.or 9 GPM.

The LP-430C is designed to operate with either Open-Center or Closed Center hydraulic system by rotating the head to the position.

The LP-430C has the same compression head as the REC-6431 so that dies are interchangeable with all 12 ton U-type dies.

It has built-in relief valve to prevent overloading the tool from more than 13.7Mpa or 2,000 PSI of input pressure.

LP-430C is fitted with a two step safety trigger to assist in eliminating accidental operation.

Trigger guard is rubber coated to protect user against sharp edges.

**REMARKS**

- \* Low pressure hydraulic compression tool
- \* Direct power input from truck PTO
- \* Relief setting at 13.7Mpa (2,000 PSI)
- \* Suitable for bucket truck use
- \* Specify the manufacturer's die and connector numbers
- \* New head design completely eliminated retract pinch points

MODEL No.

**EP-520C**Up to 500 mm<sup>2</sup> Copper Conductor,  
590mm<sup>2</sup> Aluminum Conductor**SPECIFICATIONS**Ram stroke : 26mm between dies  
Oil volume required : 132 cc

Output Force : 294 kN

**SIZE**

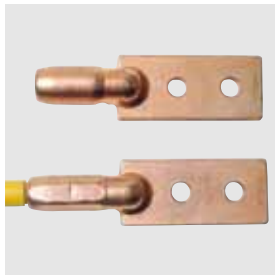
125 (Dia) x 380 (H) mm

**WEIGHT**

17.5 kg

**ACCESSORIES**Steel Carrying case  
Dies  
(See P112 for selection)

EP-520C



Compressed sample

**FEATURES**

The EP-520C is a single acting, 294kN press that is designed to compress Aluminum sleeves and lugs up to 590mm<sup>2</sup>.

The EP-520C remote head requires an external 68.5Mpa or 10,000 PSI pumping source.

Simple and rigid frame type construction makes the press lighter yet durable.

**REMARKS**

Dies are sold separately.  
\* Specify the manufacturer's die and connector numbers.

\* Simple and compact design

\* Yoke type head

\* 30 metric ton output

\* Positive die locking mechanism

MODEL No.  
**EP-60S**

Accepts existing **60 ton** U-type dies  
Max. connector diameter : Approx. 60mm



EP-60S



EP-60S shown with HPE-4M



**SPECIFICATIONS**

Ram stroke : 38.5 mm  
Oil volume required : 303 cc

Force at die face : 540 kN (60 short ton) at 68.5Mpa (10,000 PSI) of oil pressure

**SIZE**

146 (Dia) x 450 (H) mm with Ground stand

**WEIGHT**

22.0 kg

**ACCESSORIES**

Steel carrying case, Ground stand

Option :  
Die adapter for 12 ton U-type dies

**FEATURES**

The EP-60S compression head was designed as a portable tool for installing compression sleeves and terminals for transmission construction and maintenance work.

It operates in any position and gives 540 kN of working force to accept commercial compression joints used for transmission construction.

**REMARKS**

Dies are sold separately.

- \* Accepts all dies used for Alcoa, 60 ton compressors
- \* Specify the manufacturer's die and connector numbers
- \* Portable and light weight
- \* Detachable ground stand as a standard accessory
- \* Large handle for easy carrying
- \* Single acting hydraulic pump required.

MODEL No.

**EP-60D**

Accepts existing **60 ton** U-type dies  
 Max. connector diameter : Approx. 60mm

**SPECIFICATIONS**

Ram stroke : 38,5 mm  
 Oil volume required : 303 cc

Force at die face : 517kN at  
 68.5Mpa (10,000 PSI) of oil pressure

**SIZE**

260 (Dia) x 446 (H) mm with  
 Ground stand

**WEIGHT**

23.0 kg

**ACCESSORIES**

Steel carrying case, Ground stand

Option :

Die adapter for 12 ton U-type dies

**REMARKS**

Dies are sold separately.

- \* Specify the manufacturer's die and connector numbers
- \* Accepts all dies used for Alcoa, 60 ton compressors
- \* Portable and light weight
- \* Detachable ground stand as a standard accessory
- \* Large handle for easy carrying
- \* Double acting hydraulic pump required.
- The HPE-4 or HPE-4M is recommended to operate the EP-60D
- \* No connector jamming
- \* Porting : 1/4" NPSM Parker type male & female couplers
- \* 3/8 BI type coupling available on order



EP-60D

**FEATURES**

The EP-60D is a double acting 60 ton press. The benefits of double acting tools are fast ram retraction and elimination of the possibility of the tool jamming.

Double acting means hydraulically advancing and retracting the ram. When retracting the ram, a 4 way valve reroutes the hydraulic path to the retracting chamber.

It ensures the ram retracts hydraulically. As a result, the possibility of connector jamming is eliminated and at the same time the ram is retracted much faster. Ram retracting time is 1/3 of spring return EP-60S.



EP-60D shown with HPE-4



MODEL No.  
**EP-100W**

Max connector outer diameter : Approx. 75 mm  
**100 ton** class compression head



EP-100W



EP-100W shown with HPE-4

**SPECIFICATIONS**

Ram stroke : 22 mm  
Oil volume required : 230 cc  
  
Output force : 980 kN

**SIZE**

200 (Dia) x 359 (H) mm

**WEIGHT**

32.0 kg

**FEATURES**

The EP-100W is a 100 ton class compression head for full tension, transmission and substation connections and require an external double acting 68.5Mpa pumping source.

Double acting means hydraulically advancing the ram to build proper tonnage, then the hydraulic pressure is reversed to retract the ram. It expedites ram retracting time.

Removable die cap design helps operator with easy insertion and removal of the connector.

Dies are exclusive to this model not interchangeable with other make.

**REMARKS**

Dies are sold separately.

- \* Specify the manufacturer's die and connector numbers.
- \* Light weight
- \* Removable die cap for easy connector positioning
- \* Simple design for easy maintenance
- \* Double acting hydraulic pump required
- \* The HPE-4 or HEP-4M Engine driven hydraulic pump is recommended to operate the EP-100W

MODEL No.

**EP-200W**

Max connector outer diameter : Approx. 100 mm  
**200 ton** class compression head

**SPECIFICATIONS**

Ram stroke : 40 mm  
 Oil volume required : 1,134 cc  
 Output force : 1,960 kN

**SIZE**

270 (Dia) x 415 (H) mm

**WEIGHT**

86.0 kg



EP-200W



EP-200W shown with HPE-4

**FEATURES**

The EP-200W is a 200 ton class compression head which accepts shell type dies exclusively designed for the EP-200W. It requires an external double acting 68.5Mpa pumping source.

Double acting means hydraulically advancing the ram to build proper tonnage, then the hydraulic pressure is reversed to retract the ram. It expedites ram retracting time as well as connector binding between dies.

Removable die cap design helps operator an easy insertion and removable of the connector.

**REMARKS**

Dies are sold separately.

- \* Specify the manufacturer's die and connector numbers.
- \* Light weight
- \* Removable die cap for easy connector positioning
- \* Simple design for easy maintenance
- \* Double acting hydraulic pump required
- \* The HPE-4 or HPE-4M Engine driven hydraulic pump is recommended to operate the EP-200W

MODEL No.  
**S-200**

Cuts steel materials as well as cables up to 20 mm



S-200



S-200 (Latch opened)

**FEATURES**

Light weight portable hydraulic cutter features :

- \* Guillotine type cutting for less jamming than shear type cutting
- \* No set-up time required
- \* Blades are easily replaceable
- \* 180 degree swivel and latch type head allows easy cutting position

**SPECIFICATIONS**

Maximum handle load : 235 N  
 Single stage pumping  
 Relief valve is not equipped  
 Reservoir capacity : 60 cc  
 Maximum opening : 22 mm  
 Pumping cycles when no load : 39 times

Output force : 66 kN

**SIZE**

400 (L) mm

**WEIGHT**

3.0 kg

**ACCESSORIES**

Carrying bag

**REMARKS**

Cutting of piano wire is prohibited.

Cutting capacity

Wire rope 6 x 7	: 16 mm
Wire rope 6 x 12	: 20 mm
Wire rope 6 x 19	: 20 mm
Soft steel bar	: 16 mm
Reinforcing rod	: 13 mm
Cu strands	: 20 mm
Al strands	: 20 mm
ACSR	: 21 mm
Guy wire 1 x 7	: 16 mm
Guy wire 1 x 19	: 16 mm
CCP cable	: N/A

MODEL No.  
**S-240**

Cuts steel materials as well as cables up to 24 mm



S-240

### SPECIFICATIONS

Maximum handle load : 226 N  
Two stage pumping  
Relief valve is not equipped  
Reservoir capacity : 120 cc  
Maximum opening : 24 mm  
Pumping cycles when no load :  
13 times

Output force : 84 kN

### SIZE

475 (L) mm

### WEIGHT

4.9 kg

### ACCESSORIES

Carrying bag

### FEATURES

Light weight portable hydraulic cutter features :

- \* Two stage pumping for rapid blade advance
- \* Guillotine type cutting for less jamming than shear type cutting
- \* No set-up time required
- \* Blades are easily replaceable
- \* 180 degree swivel and latch type head allows easy cutting position

### REMARKS

Cutting of piano wire is prohibited.

Cutting capacity

Wire rope 6 x7	: 18 mm
Wire rope 6 x12	: 24 mm
Wire rope 6 x 19	: 24 mm
Soft steel bar	: 20 mm
Reinforcing rod	: 16 mm
Cu strands	: 24 mm
Al strands	: 24 mm
ACSR	: 24 mm
Guy wire 1 x7	: 20 mm
Guy wire 1 x 19	: 20 mm
CCP cable	: N/A



S-240 (Latch opened)

MODEL No.  
**S-320**

Cuts heavy steel materials up to 32 mm



S-320



S-320 shown with Reinforcing rod

### FEATURES

Light weight portable hydraulic cutter features :

- \* Two stage pumping for rapid blade advance
- \* Safety relief valve for overload protection
- \* Guillotine type cutting for less jamming than shear type cutting
- \* No set-up time required
- \* Blades are easily replaceable
- \* 180 degree swivel and latch type head allows easy cutting position

### SPECIFICATIONS

Maximum handle load : 276 N  
 Two stage pumping  
 Relief valve is equipped  
 Reservoir capacity : 202 cc  
 Maximum opening : 35 mm  
 Pumping cycles when no load : 20 times

Output force : 194 kN

### SIZE

580 (L) mm

### WEIGHT

12.0 kg

### ACCESSORIES

Carrying bag

### REMARKS

Cutting of piano wire is prohibited.

Cutting capacity

Wire rope 6 x 7	: 32 mm
Wire rope 6 x 12	: 32 mm
Wire rope 6 x 19	: 32 mm
Soft steel bar	: 25 mm
Reinforcing rod	: 25 mm
Cu strands	: 32 mm
Al strands	: 32 mm
ACSR	: 32 mm
Guy wire 1 x 7	: 32 mm
Guy wire 1 x 19	: 32 mm
CCP cable	: N/A

MODEL No.  
**S-400**

Cuts steel materials as well as cables up to 41 mm

### SPECIFICATIONS

Maximum handle load : 196 N  
 Two stage pumping  
 Relief valve is not equipped  
 Reservoir capacity : 120 cc  
 Maximum opening : 42 mm  
 Pumping cycles when no load :  
 17 times

Output force : 55 kN

### SIZE

575 (L) mm

### WEIGHT

5.8 kg

### ACCESSORIES

Carrying bag



S-400



S-400 (Head opened)

### FEATURES

Light weight portable hydraulic cutter features :

- \* Two stage pumping for rapid blade advance
- \* Guillotine type cutting for less jamming than shear type cutting
- \* No set-up time required
- \* Blades are easily replaceable
- \* 180 degree swivel and lock pin type head allows easy cutting position

### REMARKS

Cutting of piano wire is prohibited.

Cutting capacity

Wire rope 6 x 7	: 22 mm
Wire rope 6 x 12	: 25 mm
Wire rope 6 x 19	: 25 mm
Soft steel bar	: 20 mm
Reinforcing rod	: 16 mm
Cu strands	: 41 mm
Al strands	: 41 mm
ACSR	: 38 mm
Guy wire 1 x 7	: 15 mm
Guy wire 1 x 19	: 20 mm
CCP cable	: N/A

MODEL No.  
**S-550G**

Cuts steel materials as well as cables up to 54 mm



S-550G



### FEATURES

The S-550G is designed to cut the toughest steel used in construction site.

Guillotine type cutting for less jamming than scissors type cutting.

This cutter is suitable for ACSR cable.

The head shear plate instead of one complete head unit as previous S-550 gives low replacement cost.

### SPECIFICATIONS

Maximum handle load : 276 N  
Two stage pumping  
Relief valve is equipped  
Reservoir capacity : 202 cc  
Maximum opening : 56 mm  
Pumping cycles when no load : 25 times

Output force : 124 kN

### SIZE

625 (L) mm

### WEIGHT

10.0 kg

### ACCESSORIES

Carrying bag

### REMARKS

Cutting of piano wire is prohibited.

Cutting capacity

Wire rope 6 x 7	: 25 mm
Wire rope 6 x 12	: 30 mm
Wire rope 6 x 19	: 30 mm
Soft steel bar	: 22 mm
Reinforcing rod	: 19 mm
Cu strands	: 54 mm
Al strands	: 54 mm
ACSR	: 54 mm
Guy wire 1 x 7	: 15 mm
Guy wire 1 x 19	: 20 mm
CCP cable	: N/A



MODEL No.

**850**

Cuts cables up to 85 mm

**SPECIFICATIONS**

Maximum handle load : 196 N  
 Two stage pumping  
 Relief valve is not equipped  
 Reservoir capacity : 120 cc  
 Maximum opening : 88 mm  
 Pumping cycles when no load :  
 20 times

Output force : 39 kN

**SIZE**

710 (L) mm

**WEIGHT**

8.2 kg

**ACCESSORIES**

Carrying bag



850



850 (Head opened)

**FEATURES**

Light weight portable hydraulic cutter features :

- \* Two stage pumping for rapid blade advance
- \* Guillotine type cutting for less jamming than shear type cutting
- \* No set-up time required
- \* Blades are easily replaceable
- \* 180 degree swivel and lock pin type head allows easy cutting position

**REMARKS**

Cutting of piano wire is prohibited.

Cutting capacity

Cu strands	: 28 mm
Al strands	: 38 mm
CCP cable	: 85 mm

Wire rope 6 x 7	: N/A
Wire rope 6 x 12	: N/A
Wire rope 6 x 19	: N/A
Soft steel bar	: N/A
Reinforcing rod	: N/A
ACSR	: N/A
Guy wire 1 x 7	: N/A
Guy wire 1 x 19	: N/A

MODEL No.  
**SP-20A**

Cuts steel materials as well as cables  
up to 20 mm



SP-20A



**FEATURES**

The SP-20A hydraulic cutter head features :

- \* Fast cutting with remote operation
- \* It can be operated by any hydraulic pump with rated oil pressure of 68.5 Mpa (10,000 PSI)
- \* Equipped with PT 3/8" threaded Izumi high pressure couplers
- \* PT-NPT adapters are available on request for NPT 3/8" threaded couplers
- \* Blades are easily replaceable
- \* Flip-top latch for easy insertion of cutting material

**SPECIFICATIONS**

Maximum input pressure :  
68.5 Mpa  
Oil volume required : 18 cc

Output force : 44 kN

**SIZE**

240 (L) mm

**WEIGHT**

2.3 kg

**ACCESSORIES**

Carrying bag

**REMARKS**

Cutting of piano wire is prohibited.

Cutting capacity

Wire rope 6 x 7	: 16 mm
Wire rope 6 x 12	: 20 mm
Wire rope 6 x 19	: 20 mm
Soft steel bar	: 16 mm
Reinforcing rod	: 13 mm
Cu strands	: 20 mm
Al strands	: 20 mm
ACSR	: 21 mm
Guy wire 1 x 7	: 15 mm
Guy wire 1 x 19	: 16 mm
CCP cable	: N/A

MODEL No.  
**SP-24**

Cuts steel materials as well as cables  
up to 24 mm

### SPECIFICATIONS

Maximum input pressure :  
68.5 Mpa  
Oil volume required : 33 cc

Output force : 86 kN

### SIZE

245 (L) mm

### WEIGHT

3.1 kg

### ACCESSORIES

Carrying bag



SP-24



### FEATURES

The SP-24 hydraulic cutter head features :

- \* Fast cutting with remote operation
- \* It can be operated by any hydraulic pump with rated oil pressure of 68.5 Mpa (10,000 PSI)
- \* Equipped with PT 3/8" threaded Izumi high pressure couplers
- \* PT-NPT adapters are available on request for NPT 3/8" threaded couplers
- \* Blades are easily replaceable
- \* Flip-top latch for easy insertion of cutting material

### REMARKS

Cutting of piano wire is prohibited.

Cutting capacity

Wire rope 6 x 7	: 18 mm
Wire rope 6 x 12	: 24 mm
Wire rope 6 x 19	: 24 mm
Soft steel bar	: 20 mm
Reinforcing rod	: 16 mm
Cu strands	: 24 mm
Al strands	: 24 mm
ACSR	: 24 mm
Guy wire 1 x 7	: 20 mm
Guy wire 1 x 19	: 20 mm
CCP cable	: N/A

MODEL No.  
**SP-32**

Cuts heavy duty steel materials  
up to 32 mm



SP-32



**FEATURES**

The SP-32 hydraulic cutter head features :

- \* Fast cutting with remote operation
- \* It can be operated by any hydraulic pump with rated oil pressure of 68.5 Mpa (10,000 PSI)
- \* Equipped with PT 3/8" threaded lumzi high pressure couplers
- \* PT-NPT adapters are available on request for NPT 3/8" threaded couplers
- \* Blades are easily replaceable
- \* Flip-top latch for easy insertion of cutting material

**SPECIFICATIONS**

Maximum input pressure :  
68.5 Mpa  
Oil volume required : 135 cc  
  
Output force : 250 kN

**SIZE**

300 (L) mm

**WEIGHT**

10.0 kg

**ACCESSORIES**

Carrying bag

**REMARKS**

Cutting of plano wire is prohibited.

Cutting capacity

Wire rope 6 x 7	: 32 mm
Wire rope 6 x 12	: 32 mm
Wire rope 6 x 19	: 32 mm
Soft steel bar	: 25 mm
Reinforcing rod	: 25 mm
Cu strands	: 32 mm
Al strands	: 32 mm
ACSR	: 32 mm
Guy wire 1 x 7	: 32 mm
Guy wire 1 x 19	: 32 mm
CCP cable	: N/A

MODEL No.

**SP-40A**

Cuts steel materials as well as cables  
up to 41 mm

**SPECIFICATIONS**

Maximum input pressure :  
68.5 Mpa  
Oil volume required : 50 cc

Output force : 68 kN

**SIZE**

340 (L) mm

**WEIGHT**

4.0 kg

**ACCESSORIES**

Carrying bag



SP-40A

**FEATURES**

The SP-40A hydraulic cutter head features :

- \* Fast cutting with remote operation
- \* It can be operated by any hydraulic pump with rated oil pressure of 68.5 Mpa (10,000 PSI)
- \* Equipped with PT 3/8" threaded Izumi high pressure couplers
- \* PT-NPT adapters are available on request for NPT 3/8" threaded couplers
- \* Blades are easily replaceable
- \* Lock pin type cutter head

**REMARKS**

Cutting of piano wire is prohibited.

Cutting capacity

Wire rope 6 x 7	: 22 mm
Wire rope 6 x 12	: 25 mm
Wire rope 6 x 19	: 25 mm
Soft steel bar	: 20 mm
Reinforcing rod	: 16 mm
Cu strands	: 41 mm
Al strands	: 41 mm
ACSR	: 38 mm
Guy wire 1 x 7	: 15 mm
Guy wire 1 x 19	: 20 mm
CCP cable	: N/A

MODEL No.  
**SP-55A**

Cuts steel materials as well as cables  
up to 55 mm



SP-55A



**FEATURES**

The SP-55A hydraulic cutter head features :

- \* Fast cutting with remote operation
- \* It can be operated by any hydraulic pump with rated oil pressure of 68.5 Mpa (10,000 PSI)
- \* Equipped with PT 3/8" threaded Izumi high pressure couplers
- \* PT-NPT adapters are available on request for NPT 3/8" threaded couplers
- \* Blades are easily replaceable
- \* Lock pin type cutter head

**SPECIFICATIONS**

Maximum input pressure :  
68.5 Mpa  
Oil volume required : 120 cc

Output force : 118 kN

**SIZE**

415 (L) mm

**WEIGHT**

9.0 kg

**ACCESSORIES**

Carrying bag

**REMARKS**

Cutting of piano wire is prohibited.

Cutting capacity

Wire rope 6 x 7	: 25 mm
Wire rope 6 x 12	: 30 mm
Wire rope 6 x 19	: 30 mm
Soft steel bar	: 22 mm
Reinforcing rod	: 19 mm
Cu strands	: 50 mm
Al strands	: 50 mm
ACSR	: 50 mm
Guy wire 1 x 7	: 15 mm
Guy wire 1 x 19	: 20 mm
CCP cable	: N/A

MODEL No.

**P-60**

Cuts Al &amp; Cu cables up to 60 mm



P-60

**SPECIFICATIONS**

Maximum input pressure :

68.5 Mpa

Oil volume required :71 cc

Maximum opening : 60 mm

Output force : 79 kN

**SIZE**

410 (L) mm

**WEIGHT**

5.2 kg

**ACCESSORIES**

Carrying bag

**FEATURES**

The P-60 portable hydraulic cutter head features :

- \* Fast cutting with remote operation
- \* Guillotine type cutting for less jamming than shear type cutting
- \* It can be operated by any hydraulic pump with rated oil pressure of 68.5 Mpa (10,000 PSI)
- \* Equipped with NPT 3/8" threaded Parker type high pressure coupler
- \* Blades are easily replaceable
- \* Lock pin type cutter head

**REMARKS**

Cutting of piano wire is prohibited.

Cutting capacity

Cu strands	: 60 mm
Al strands	: 60 mm
CCP cable	: 60 mm

Wire rope 6 x7	: N/A
Wire rope 6 x12	: N/A
Wire rope 6 x 19	: N/A
Soft steel bar	: N/A
Reinforcing rod	: N/A
ACSR	: N/A
Guy wire 1 x7	: N/A
Guy wire 1 x 19	: N/A



MODEL No.  
**P-85**

Cuts Al & Cu cables up to 85 mm



**SPECIFICATIONS**

Maximum input pressure :  
68.5 Mpa  
Oil volume required : 65 cc

Output force : 40 kN

**SIZE**

460 (L) mm

**WEIGHT**

7.2 kg

**ACCESSORIES**

Carrying bag

P-85



**FEATURES**

The P-85 hydraulic cutter head features :

- \* Fast cutting with remote operation
- \* It can be operated by any hydraulic pump with rated oil pressure of 68.5 Mpa (10,000 PSI)
- \* Equipped with PT 3/8" threaded Izumi high pressure couplers
- \* PT-NPT adapters are available on request for NPT 3/8" threaded couplers
- \* Blades are easily replaceable
- \* Lock pin type cutter head

**REMARKS**

Cutting of plano wire is prohibited.

Cutting capacity

Cu strands	: 28 mm
Al strands	: 38 mm
CCP cable	: 85 mm

Wire rope 6 x 7	: N/A
Wire rope 6 x 12	: N/A
Wire rope 6 x 19	: N/A
Soft steel bar	: N/A
Reinforcing rod	: N/A
ACSR	: N/A
Guy wire 1 x 7	: N/A
Guy wire 1 x 19	: N/A



MODEL No.

**P-100A**

Cuts Al &amp; Cu cables up to 100 mm

**SPECIFICATIONS**

Maximum input pressure :  
68.5 Mpa  
Oil volume required : 140 cc

Output force : 74 kN

**SIZE**

590 (L) mm

**WEIGHT**

13.2 kg

**ACCESSORIES**

Carrying bag



P-100A

**FEATURES**

The P-100A hydraulic cutter head features :

- \* Fast cutting with remote operation
- \* It can be operated by any hydraulic pump with rated oil pressure of 68.5 Mpa (10,000 PSI)
- \* Equipped with PT 3/8" threaded Izumi high pressure couplers
- \* PT-NPT adapters are available on request for NPT 3/8" threaded couplers
- \* Blades are easily replaceable
- \* Lock pin type cutter head

**REMARKS**

Cutting of piano wire is prohibited.

Cutting capacity

Cu strands	: 42 mm
Al strands	: 46 mm
CCP cable	: 100mm

Wire rope 6 x 7	: N/A
Wire rope 6 x 12	: N/A
Wire rope 6 x 19	: N/A
Soft steel bar	: N/A
Reinforcing rod	: N/A
ACSR	: N/A
Guy wire 1 x 7	: N/A
Guy wire 1 x 19	: N/A

MODEL No.

**P-132**

Cuts insulated cables up to 132 mm



P-132



P-132 shown with P-60



**SPECIFICATIONS**

Maximum input pressure :  
68.5 Mpa (10,000 PSI)  
Oil volume required : 220 cc

Output force : 95 kN

**SIZE**

630 (L) mm

**WEIGHT**

12.0 kg

**ACCESSORIES**

Carrying bag

**FEATURES**

P-132 hydraulic cutter head features :

- \* Cuts underground or armored cables (depends on type)
- \* Fast cutting with remote operation
- \* Guillotine type cutting for less jamming than shear type cutting
- \* 132mm jaw opening accepts larger size cables
- \* Can be operated by any hydraulic pump with rated oil pressure of 68.5 Mpa (10,000 PSI)
- \* Equipped with NPT 3/8" threaded Parker type high pressure couplers
- \* Blades are easily replaceable
- \* Lock pin type cutter head

**REMARKS**

Cutting of plano wire is prohibited.

Cutting capacity

Cu strands : 42 mm  
Al strands : 46 mm

Wire rope 6x7 : N/A  
Wire rope 6x12 : N/A  
Wire rope 6x19 : N/A  
Soft steel bar : N/A  
Reinforcing rod : N/A  
ACSR : N/A  
Guy wire 1x7 : N/A  
Guy wire 1x19 : N/A

\*Quality backed by ISO 9001

MODEL No.

**YSP-30B**

Al strands : 28 mm (240 mm<sup>2</sup>)  
 Cu strands : 28 mm (250 mm<sup>2</sup>)  
 ACSR: 19 mm (120 mm<sup>2</sup>) (Single strand steel core)



YSP-30B

**SPECIFICATIONS**

Maximum input pressure :  
68.5 Mpa

Oil volume required : 18 cc

Output force : 63 kN

**SIZE**

320 (L) mm

**WEIGHT**

3.2 kg

**ACCESSORIES**

Carrying bag

**FEATURES**

The YSP-30B hydraulic scissors type cutter head is ideal for close quarter work and bucket truck applications where the open jaw cutter can easily grab and cut the cables.

Scissors type cutting gives clean cut with a minimal amount of cable distortion, which allows for easy connector installation on cables.

The YSP-30B remote head requires an external, high pressure, 68.5Mpa (10,000 PSI ) pumping source.

**REMARKS**

- \* Scissors type cutter
- \* Fast remote operation
- \* Light weight and compact
- \* 30mm opening between blades

YSP-30B with 3-60mm<sup>2</sup> cables

MODEL No.

# P-105YC

Cuts electric cables up to 105 mm



P-105YC



## FEATURES

The P-105YC scissors type cutter head was designed to cut various cables used in the industry today.

It can cut Cu and Al cables up to 105mm

The scissors type cutter head provides exceptional ease of use and maneuverability when making many cuts. It can cut the cables with a minimum amount of distortion.

Two way handles give better control and positioning for many cuts and also works as a stand on the ground.

High cutting force allows cutting popular underground cables

## SPECIFICATIONS

Jaw Opening : 105mm  
 Operating pressure : 700 bar  
 Cutting force : 12 metric ton

## SIZE

535 (L) x 250 (H) x 120 (W) mm

## WEIGHT

7.9 kg

## ACCESSORIES

Carrying bag

## REMARKS

Cutting capacity :

Material

600V-CV325mm<sup>2</sup>  
 4 core (ø72)  
 600V-CV600mm<sup>2</sup>  
 single core (ø41)  
 600V-CVT400mm<sup>2</sup>  
 Triple cable (ø72)  
 6600V-CV600mm<sup>2</sup>  
 Single core (ø47)  
 6600V-CV325mm<sup>2</sup>  
 3 core (ø77)  
 600V-IV500mm<sup>2</sup>  
 Single core (ø35)  
 600V-VVR250mm<sup>2</sup>  
 4 core (ø65)

Energy cable Cu 4x240mm<sup>2</sup>  
 Up to ø105  
 Energy cable Al 4x300mm<sup>2</sup>  
 Up to ø105

MODEL No.

**HP-180N**

Rated pressure : 0 - 59 Mpa

**SPECIFICATIONS**

Oil delivery : 0.9 cc / stroke

Reservoir capacity : 180 cc

**SIZE**

320 (L) x 80 (W) x 120 (H) mm

**WEIGHT**

3.7 kg

**ACCESSORIES**

1 m hydraulic hose attached



HP-180N



HP-180N shown with SH-10

**FEATURES**

The HP-180N is ideal for SH-10 Punch driver or any small remote heads requiring less than 180 cc of oil volume.

Since the HP-180N does not have a relief valve, it cannot be used with any compression heads which require a relief valve to ensure a constant compression every time.

**REMARKS**

Relief valve not equipped.

\* Bladder type oil reservoir allows operation in any position

\* Single stage pumping

MODEL No.

**HP-700A/  
FP-700A**

Rated pressure : 68.5 Mpa or 10,000 PSI



HP-700A

FP-700A



Bypass cartridge

**FEATURES**

The HP-700A hand pump and FP-700A foot pump have a two speed pump piston for rapid advance and an external adjustable pressure setting up to 68.5Mpa.

Our exclusive replaceable, bypass cartridge is standard in both of pumps.

An internal oil bladder allows the both of pumps to be used in any position. (Even pump head upward)

**SPECIFICATIONS**

Oil delivery :  
10.5 cc / stroke at low pressure  
1.5 cc / stroke at high pressure

Reservoir capacity : 720 cc

**SIZE**

HP-700A :  
590 (L) x 130 (W) x 160 (H) mm  
FP-700A :  
690 (L) x 150 (W) x 180 (H) mm

**WEIGHT**

HP-700A : 9.6 kg  
FP-700A : 10.8 kg

**ACCESSORIES**

2 m hydraulic hose attached (HP-700A)

**REMARKS**

- \* Two stage pumping action for rapid ram advance
- \* Replaceable Dropout bypass valve cartridge for easy repair
- \* Economical yet dependable hand hydraulic pump

MODEL No.

**R14E-H**

Rated pressure : 68.5 Mpa or 10,000 PSI

**SPECIFICATIONS**

Oil delivery (50Hz) :  
2.9 liter / min at low pressure  
0.3 liter / min at high pressure

Input : Single phase 50 / 60 Hz 120 V or 220 V 340 W motor

Reservoir capacity : 1.7 liter

Cable length of remote control switch : 3 m

**SIZE**

306 (L) x 205 (W) x 393 (H) mm

**WEIGHT**

16 kg (14.5 kg dry)

**ACCESSORIES**

2 m hydraulic hose attached

**REMARKS**

New design

\* Two stage pumping system for rapid advance

\* Adjustable output pressure to 68.5 Mpa

\* 360 degree swivel joint for hose maneuverability

\* Visual oil level

\* Wired remote control

\* Lighter weight

\* Durable resin cover and oil reservoir

\* Hose holders on cover



R14E-H

**FEATURES**

The R14E-H remote operated pump gives the operator complete control. Push buttons permit the operator to advance and retract at will. The operator is never committed to a full cycle, and can always back off at any time during the advance even under pressure. This feature increases efficiency because cuts and crimps can be adjusted as necessary, simply by stopping the advance or retract mode.

The electric motor shuts off when UP button is released and the pressure reaches to preset valve, of 68.5Mpa. The ram can be retracted while DOWN button is depressed.

A 3 meter remote control cable provides both safety and convenience. The operator can set up an operation and then move away from the work site before engaging the tool.



R14E-H shown with EP-431H

MODEL No.

**R14E-A1**

Rated pressure : 68.5 Mpa or 10,000 PSI



R14E-A1



R14E-A1 shown with EP-431H

**FEATURES**

The R14E-A1 is a fully remote controlled, single acting, 68.5Mpa, electric pump. The two button hand held remote control allows the operator to advance, hold or retract at any time. When 68.5Mpa is reached, the pump will automatically shut off and hold the pressure until the operator pushes the release button to retract the tool.

There is an auto cycle switch that allows the operator to push the advance button once and the pump automatically advances, runs to 68.5 Mpa, and releases. This feature is convenient where operation is repeated several times.

**SPECIFICATIONS**

Oil delivery (50Hz) :  
1.7 liter / min at low pressure  
0.4 liter / min at high pressure

Input : Single phase 50 / 60 Hz  
120 V or 220 V 550 W motor

Reservoir capacity : 3 liter

Cable length of remote control switch : 3 m

**SIZE**

350 (L) x 330 (W) x 420 (H) mm

**WEIGHT**

32.5kg (29.5 kg dry)

**ACCESSORIES**

Remote control switch

**REMARKS**

Hydraulic hose sold separately.

- \* Fully remote controlled
- \* Visual oil level
- \* 3/4 HP heavy duty motor
- \* Durable steel construction with built-in carrying handle
- \* Auto cycle mode
- \* Low amperage requirement



MODEL No.

**HPM-06A**

Rated pressure : 68.5 Mpa or 10,000 PSI



HPM-06A

**SPECIFICATIONS**

Oil delivery (50Hz) :  
2.5 liter / min at low pressure  
0.4 liter / min at high pressure

Input : Single phase 50 / 60 Hz  
120 V or 220 V 550 W motor

Reservoir capacity : 3 liter

Cable length of remote control  
switch : 3 m

**SIZE**

350 (L) x 330 (W) x 420 (H) mm

**WEIGHT**

36kg (33.5 kg dry)

**ACCESSORIES**

Remote control switch

**FEATURES**

The HPM-06A is a fully remote controlled, double acting, 68.5Mpa, electric pump. The HPM-06A can also be used for spring return tools without loosing function of R14E-A1. The two button hand held remote control allows the operator to advance, hold or retract at any time. When 68.5Mpa is reached, the pump will automatically shut off and hold the pressure until the operator pushes the release button to retract the tool.

There is an auto cycle switch that allows the operator to push the advance button once and the pump automatically advances, runs to 68.5 Mpa, and releases. This feature is convenient where operation is repeated several times.

**REMARKS**

Hydraulic hose sold separately.

\* Fully remote controlled

\* Visual oil level

\* Durable steel construction with built-in carrying handle

\* Auto cycle mode

MODEL No.

**HPE-2A/  
HPE-2D**

Rated pressure : 68.5 Mpa or 10,000 PSI



HPE-2A

HPE-2D



HPE-2A shown with EP-60S

**SPECIFICATIONS**

Oil delivery :

HPE-2A :

- 2.6 liter / min at low pressure
- 0.5 liter / min at high pressure

HPE-2D :

- 2.6 liter / min at low pressure
- 0.35 liter / min at high pressure

Engine : Air cooled

4 cycle gasoline engine

1.5kw (2.0 ps) / 3,600 rpm,

leadfree gasoline

Reservoir capacity : 2.2 liter

Cable length of remote control

switch : 3 m

**SIZE**

HPE-2A : 470 (L) x 330 (W) x 443 (H)mm

HPE-2D : 530 (L) x 330 (W) x 443 (H)mm

**WEIGHT**

HPE-2A : 33.5kg (30kg dry)

HPE-2D : 37.5kg (34kg dry)

**ACCESSORIES**

Remote control switch,

Spark plug wrench

**REMARKS**

Hydraulic hose sold separately.

\* Remote control operation

\* Pole mounting bracket as a standard accessory

\* Visual oil level

\* External air vent and oil level

\* Compact design

**FEATURES**

The HPE-2A **single acting**. The HPE-2D **double acting**, gasoline engine driven hydraulic pumps are the most sophisticated engine pump on today's market. It builds pressure to 68.5Mpa automatically and returns engine RPM to an idle.

Wired remote control allows operator complete control. Oil volume is large enough to operate a 60 ton class single acting compression head.

The four cycle engine is used with this Pump.  
This engine meets emission control in accordance with EPA Phase2 and CARB Tier2.

And this engine improves fuel cost by 15% in comparison with former EY08D engine on the HPE-2A and the HPE-2D.

MODEL No.

**HPE-4/  
HPE-4M**

HPE-4 : double acting tools

HPE-4M : double and single acting tools

**SPECIFICATIONS**

Oil delivery :

7.5 liter / min at low pressure

1.2 liter / min at high pressure

Engine : Air cooled

4 cycle gasoline engine

2.2kw (3.0 ps) / 3,600 rpm,

leadfree gasoline

Reservoir capacity : 10 liter

**SIZE**

HPE-4 :

665 (L) x 405 (W) x 445 (H) mm

HPE-4M :

670 (L) x 405 (W) x 475 (H) mm

**WEIGHT**

60.0 kg (50.0 kg dry)

**ACCESSORIES**

3 m Remote control switch, (HPE-4 only) Spark plug wrench

**REMARKS**

Hydraulic hose sold separately.

\* Wired remote control operation with manual control lever (HPE-4)

\* Pressure gauge for easy output confirmation



HPE-4

HPE-4M

**FEATURES**

The HPE-4 is a **double acting** engine driven hydraulic pump suitable for double acting presses for transmission line use.

The HPE-4M is a manual controlled engine driven hydraulic pump suitable for single and double acting presses for transmission line use.

The manual control valve permits the user to advance, hold and retract the ram at will. It works for both **single and** double acting presses.

Electric circuit boards are completely modulated for easy replacement and repair.

The four cycle engine is used with this Pump. This engine meets emission control in accordance with EPA Phase2 and CARB Tier2. And this engine reduces level by 2 dBA in comparison with former EY15 engine on the HPE-3 and HPE-3M.



HPE-4 shown with EP-200W



HPE-4M shown with EP-200W

MODEL No.

## SH-10(A)P SH-10(B)P

Up to 115.5 mm diameter hole perforation on 3.2 mm thickness mild steel



SH-10 (B) P



SH-10(A)P shown with carrying case

### FEATURES

Selection Chart :

- SH-10 (A) P      SH-10 (B) P
- 1 HP-180N Hand Pump
  - 2 Setting threads (3/8" & 3/4")
  - 3 Collar (Large, Medium, Small)
  - 4 Steel carrying case

- |              |              |
|--------------|--------------|
| A19 (3/4")   | B16 (1/2")   |
| A25 (1")     | B22 (3/4")   |
| A31 (1 1/4") | B28 (1")     |
| A39 (1 1/2") | B36 (1 1/4") |
| A51 (2")     | B42 (1 1/2") |
|              | B54(2")      |

### SPECIFICATIONS

Punching capacity  
 Stainless Steel :  
 1.6 mm plate thickness  
 Mild steel :  
 3.2 mm plate thickness  
 Hole diameter :

up to 115.5 mm (4 inches)  
 Ram Stroke : 25 mm  
 Oil volume required : 35 cc  
 Output force : 81 kN at 68.5 Mpa pressure

### SIZE

63 (Dia) x 125 (H) mm

### WEIGHT

1.9 kg

### ACCESSORIES

Milli size punch sets are available on request.

M15, 16, 25, 30, 35, 40, 45, 50, 55, 57, 67, 70, 80, 82, 87, 95, 100, 108, 110

### REMARKS

Punching size

Punch	Hole size
A15*	17.6 mm
A19 (3 / 4)	19.8 mm
A25 (1)	26.1 mm
A31 (1 1 / 4)	32.5 mm
A39 (1 1 / 2)	38.7 mm
A51 (2)	51.6 mm
A63 (2 1 / 2)*	64.4 mm
A75 (3)*	77.2 mm
B16 (1 / 2)	21.8 mm
B22 (3 / 4)	27.6 mm
B28 (1)	34.1 mm
B36 (1 1 / 4)	42.7 mm
B42 (1 1 / 2)	48.7 mm
B54 (2)	60.5 mm
B70 (2 1 / 2)*	76.1 mm
B82 (3)*	88.9 mm
B92 (3 1 / 2)*	102.8 mm
B104 (4)*	115.5 mm

(\* ) marks show optional punch set available

MODEL No.

**SH-5PDG**

Punching capacity : 115.5mm diameter hole on 3.2mm thickness mild steel



SH-5PDG



SH-5PDG shown with standard accessories

**FEATURES**

The SH-5PDG is a portable hand hydraulic punch with swivel head for easy access to tight quarters.

It gives clean perforation through 3.2mm thick mild steel with a 4 inch hole.

**SH-5PDG CONTENTS**

- 1 SH-5PDG Hand hydraulic punch
- 2 Set bolts (3/8", 3/4")
- 3 Collars (Large, Medium, Small, Ex-small)
- 4 Steel carrying case

**SH-5PDG PUNCH SET**

- 1 SH-5PDG (A) SET : with A19-51 punch
- 2 SH-5PDG (B) SET : with B16-51 punch

**SPECIFICATIONS**

Reservoir capacity : 40 cc  
Output force : 73 kN at 68.5 Mpa pressure

Punching capacity  
Stainless Steel :  
1.6 mm plate thickness  
Mild steel :  
3.2 mm plate thickness  
Hole diameter :  
up to 115.5 mm (4 inches)

**SIZE**

353 (L) mm

**WEIGHT**

2.4 kg

**ACCESSORIES**

Steel carrying case.

**REMARKS**

- \* Self-contained hand hydraulic punch
- \* Punching head rotates through 360 degrees for easy access in tight quarters
- \* Slim design
- \* Details information of punch is shown on page of SH-10

**APPLICABLE PUNCH**

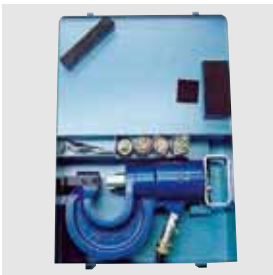
- \* A19-A75
- \* B16-B104

MODEL No.  
**SH-70B**

Punching capacity : 20.5 mm diameter hole on 13 mm thickness mild steel



SH-70B



**Optional punch & die**

- For copper & Aluminum  
Cu6, Cu7, Cu8, Cu9, Cu10,  
Cu10.5, Cu11, Cu12,  
Cu13.5, Cu17.5, Cu20.5
- For mild steel  
(every other mm)  
S6-S19

**FEATURES**

The portable SH-70B punch was designed to punch holes through 13 mm mild steel, aluminum and copper.

A stripper guide extends on either side of the ram to strip the material after punching. This powerful punch will operate from any 68.5Mpa (10,000 PSI) hydraulic pump.

The SH-70B comes complete with four sets of punch and die sizes for 3/8", 1/2", 5/8" and 3/4" bolts, hand pin, carrying case.

**SPECIFICATIONS**

Throat depth : 70 mm  
Oil volume required : 82 cc

Output force : 304 kN at 68.5 Mpa pressure

**SIZE**

360 (H) x 210 (W) x 95 (D) mm

**WEIGHT**

14.0 kg

**ACCESSORIES**

Punch & Die for mild steel :  
10.5, 13.5, 17.5, 20.5mm diameter, Hand pin,  
Steel carrying case

**REMARKS**

\* Powerful perforation up to 13 mm thick mild steel with a 20.5 mm maximum hole

\* Recommended for angle iron, plates, beams and bus bars

\* Stripper guide extends to grip material before punching so that bending and binding or slippage can be avoided

\* Stripper guide clamps punch in place to free operator's hands

\* 70 mm throat depth allows commonly used angle iron

\* New fixed Support stand.

MODEL No.

**PB-10N/  
PB-15N**

Thin steel conduit (A) : A15 (5/8) - A75 (3)

Thick steel conduit (B) : B16 (1/2) - B104 (4)

Gas pipe (SGP) : SGP15 (1/2) - SGP100 (4)

### SPECIFICATIONS

PB-10N:

Oil volume required : 400 cc

Output force : 108 kN

Ram stroke : 250mm

PB-15N:

Oil volume required : 595 cc

Output force : 162 kN

Ram stroke : 250mm

### SIZE

PB-10N : 780 (W) mm

PB-15N : 900 (W) mm

### WEIGHT

PB-10N : 15 kg PB-15N : 23 kg  
W/O PIVOT SHOES and BENDER  
SHOE

### ACCESSORIES

Frame, Cylinder,  
Pivot shoes (2 pieces),  
Angle gauge

### REMARKS

Hydraulic pump & Bending shoes are sold separately.

Bending Shoe

Thin conduit (A) **Thick conduit (B)**

Gas pipe (SGP)

Size	Pipe dia	Size	Pipe dia
A15	15.9	<b>B42</b>	<b>47.8</b>
A19	19.1	<b>B54</b>	<b>59.6</b>
A25	25.4	<b>B70</b>	<b>75.2</b>
A31	31.8	<b>B82</b>	<b>87.9</b>
A39	38.1	<b>SGP-15</b>	<b>21.7</b>
A51	50.8	<b>SGP-20</b>	<b>27.2</b>
A63	63.5	<b>SGP-25</b>	<b>34.0</b>
A75	76.2	<b>SGP-32</b>	<b>42.7</b>
<b>B16</b>	<b>21.0</b>	<b>SGP-40</b>	<b>48.6</b>
<b>B22</b>	<b>26.5</b>	<b>SGP-50</b>	<b>60.5</b>
<b>B28</b>	<b>33.3</b>	<b>SGP-65</b>	<b>76.3</b>
<b>B36</b>	<b>41.9</b>		

PB-15N only

<b>B104</b>	<b>113.4</b>	<b>SGP-80</b>	<b>89.1</b>
<b>SGP-90</b>	<b>101.6</b>	<b>SGP-100</b>	<b>114.3</b>



PB-10N

PB-15N

### FEATURES

The PB-10N and PB-15N were designed to bend various sizes and various thickness of steel pipes without wrinkles.

An aluminum alloy frame makes this bender lighter so that it can be easily carried to the job site.

Bending shoes are designed to bend JIS standardized conduit pipe and gas pipe listed in left chart. If the pipe outer diameter being bent is equivalent to the one from the chart, the shoe can be used for the application.



Example of bending shoes

MODEL No.  
**NP-400**

Peels insulation jacket of the conductor



NP-400

**SPECIFICATIONS**

10 mm to 32 mm O.D. insulated cable (Vinyl or polyethylene jackets) with insulation thickness of 1.5 mm to 3 mm

**SIZE**

80 (W) x 200 (L) mm

**WEIGHT**

740 g



NP-400

**FEATURES**

The NP-400 can peel insulation from a conductor with an O.D. of 10 to 32 mm and a maximum insulation thickness of 3 mm.

This tool will not work on semiconductors since the cutting blade uses a scoop design to pull insulation away from the wire strands.

It is most commonly used on jacketed aluminum and copper cables for both underground and overhead.

The NP-400 can handle mid-span peeling as well as cable end preparation. A simple rotation and hand force is all it takes to remove the jacket.

**REMARKS**

It is necessary to change the blade depth according to the insulation thickness.

Operating instructions:

- 1 Set the blade depth by rotating the adjusting knob.
- 2 Set the conductor in the peeler.
- 3 Start peeling by rotating the peeler around the conductor.
- 4 Apply hand force against the peeling direction to end the peeling.



MODEL No.

**IZ-325A**

Maximum cutting diameter : Nonferrous 33mm or  
325mm<sup>2</sup> Cu Cable

**SPECIFICATIONS**

Cuts up to 325mm<sup>2</sup> Cu cable

- \* Light weight and compact
- \* Clean square cutting
- \* Easy cutting operation
- \* Durable construction
- \* Forged cutting cable
- \* Reverse operation allowed

**SIZE**

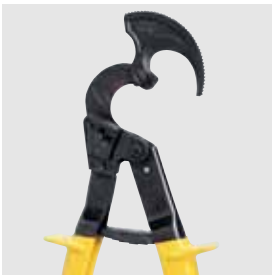
260 (L) mm

**WEIGHT**

610 g



IZ-325A shown with CV 325mm<sup>2</sup> Cu Cable



IZ-325A Moving Blade Opened

**FEATURES**

The IZ-325A Ratchet Cable Cutter was designed to cut up to 325mm<sup>2</sup> or 33mm outer diameter Cu Cable.

The IZ-325A features light weight, easy to use and clean cutting of the material

The cutter is equipped with the release mechanism so that the cutting can be backed out when necessary.

This economical ratchet cutter is ideal for an electrician's wiring preparation tool.

**REMARKS**

Cutting capacity :  
Nonferrous cables only.

Cutting material :  
Polyethylene cable  
600V-CV325mm<sup>2</sup> (31mm OD)  
600V-CV60mm<sup>2</sup> X 3 core(32mm OD)

Multi-core vinyl insulation cable  
VVR 60mm<sup>2</sup> X 3 core (33mm OD)

IV325mm<sup>2</sup> (29mm OD)

To release ratchet, push release lever downward  
Blade moves freely.

# PRESSURE TEST GAUGE

MODEL No.

## PG-325

Applicable to check inner pressure of hydraulic system



### SPECIFICATIONS

Dial face up to 100 Mpa

### SIZE

195 (L) x 105 (W) x 45 (D) mm

### WEIGHT

1.5 kg

MODEL No.

## PG-15F

Applicable to check output force of 6ton hydraulic compression tools



### SPECIFICATIONS

Dial face up to 80 kN

### SIZE

250 (L) x 105 (W) x 45 (D) mm

### WEIGHT

2.0 kg

### APPLICABLE TOOLS

ECO-50, ECO-50M,  
REC-651F,  
15B,  
EP-50, EP-50H,  
LIC-551F

MODEL No.

## PG-610B

Applicable to check output force of 12ton and 15ton hydraulic compression tools



### SPECIFICATIONS

Dial face up to 176 kN

### SIZE

250 (L) x 105 (W) x 25 (D) mm

### WEIGHT

1.5 kg

### APPLICABLE TOOLS

EP-410, EP-431, EP-510C,  
EP-410H, EP-431H,  
EP-510HC, EP-610HS-2,  
LP-430C, REC-3410,  
REC-3430A, REC-3510A,  
REC-3610, REC-6431,  
REC-6510, LIC-5431,  
LIC-5510

MODEL No.

## PG-UC6

Applicable to check output force of Dieless hydraulic crimping tools



### SPECIFICATIONS

Dial face up to 80 kN

### SIZE

250 (L) x 105 (W) x 45 (D) mm

### WEIGHT

2.0 kg

### APPLICABLE TOOLS

UC-6B, UC-6FT2,  
REC-6630, REC-6750  
LIC-5630

MODEL No.

## PG-H130

Applicable to check output force of 12ton and 15ton hydraulic compression tools



### SPECIFICATIONS

Dial face up to 130 kN

### SIZE

250 (L) x 105 (W) x 25 (D) mm

### WEIGHT

1.5 kg

### APPLICABLE TOOLS

EP-410, EP-431, EP-510C,  
EP-410H, EP-431H,  
EP-510HC, EP-H130H,  
EP-250H, REC-3410,  
REC-3430A, REC-3510A,  
REC-H6130, REC-6431,  
REC-6510  
LIC-5431, LIC-5510

MODEL No.

## PG-SL

Applicable to check output force of SL-NDM and REC-6NDSL



### SPECIFICATIONS

Dial face up to 100 Mpa

### SIZE

195 (L) x 105 (W) x 45 (D) mm

### WEIGHT

1.5 kg

### APPLICABLE TOOLS










SL-NDM and REC-6NDSL

## Selection Chart of Compression Tools (6-15 ton)

Designed to accommodate hexagonal, circular shell and indent type dies for applying compression fittings to copper, aluminum and ACSR conductors.

Category	6 ton		12 ton				15 ton	
	24mm		25mm	28mm	30mm	42mm	50mm	
<b>HAND OPERATED</b> <small>Ram Stroke (Jaw Opening)</small>						—		
	<b>EP-50</b>	<b>EP-410</b>	<b>EP-H130</b>	<b>EP-431</b>	<b>EP-510C</b>			
<b>REMOTE HEAD</b>								
	<b>EP-50H</b>	<b>EP-410H</b>	<b>EP-H130H</b>	<b>EP-431H</b>	<b>EP-510HC</b>	<b>EP-610HS2</b>		
<b>BATTERY OPERATED BOX TYPE</b>	—		—					
		<b>REC-3410</b>		<b>REC-3430A</b>	<b>REC-3510A</b>	<b>REC-3610 (*4)</b>		
<b>BATTERY OPERATED STICK TYPE</b>		—	—				—	
	<b>ECO-50</b> <b>ECO-50M</b>			<b>SL-C430</b>	<b>SL-C510</b>	<b>SL-510</b>		
<b>BATTERY OPERATED GUN TYPE</b>		—				—		
	<b>REC-651F</b>		<b>REC-H6130</b>	<b>REC-6431</b>	<b>REC-6510</b>			
<b>LITHIUM ION BATTERY OPERATED GUN TYPE</b>	—	—	—			—		
				<b>LIC-5431</b>	<b>LIC-5510</b>			
<b>APPLICABLE DIES TYPE</b>								
	<b>BEKU TYPE DIES</b>		<b>U-DIES</b>			<b>P-DIES</b>	<b>U DIES + P-U ADAPTER (*4)</b>	
<b>APPLICABLE COMPRESSION RANGE *</b>	<Copper> 10 to 150mm <sup>2</sup> <Aluminum / ACSR> 16 to 95mm <sup>2</sup>		<Copper Conductor> upto 250mm <sup>2</sup>			<Copper Conductor> upto 400mm <sup>2</sup>	Accepts Burndy P dies & U dies with P-U Adapter	

## IZUMI Compression Tools (30-200 ton class)

Category	30ton	60ton		100ton	200ton
Power source	SINGLE ACTING			DOUBLE ACTING	
Ram Stroke	26mm	38.5mm		22mm	40mm
Tool	 <b>EP-520C</b>	 <b>EP-60S</b>	 <b>EP-60D</b>	 <b>EP-100W</b>	 <b>EP-200W</b>
Dies					
Compression Range	<Copper> 8mm <sup>2</sup> to 500mm <sup>2</sup> <Aluminum> 30mm <sup>2</sup> to 590mm <sup>2</sup>	up to 60mm O.D. Sleeve		<Copper> up to 64mm O.D. Sleeve <Aluminum> up to 71mm O.D. Sleeve <Steel> up to 32mm O.D. Sleeve	<Copper> up to 86mm O.D. Sleeve <Aluminum> up to 100mm O.D. Sleeve <Steel> up to 50mm O.D. Sleeve
Pump to Operate	HP-700A. FP-700A. R14E-H. R14E-A1. HPE-2A. HPE-4M, REC-P2 REC-Li600P. REC-P600		HPE-2D. HPE-4, HPE-4M		HPE-4, HPE-4M



# SELECTION CHART 《Maximum Cutting Capacity》

## Hand Hydraulic Cable Cutter


Cutting Capacity (Outer Diameter / mm)

Model	Output (kN)	Wire Rope (Hemp-core)			Bars				Strands				Other Cables			
		6X7	6X12	6X19	Soft Copper	Soft Aluminum	Soft Steel	Reinforcing	Bare Copper	Bare Aluminum	ACSR	1x7 Guy Steel Wire	1x19 Guy Steel Wire	Telephone cable (CCP)	Lead Sheathed Cable (Telephone Cable)	Under ground cable
REC-S624 LIC-S524	84	18	24	24	24	18	20	16	24	24	24	20	20	-	-	24
REC-630Y	63	-	-	-	-	-	-	-	28	28	19 *	-	-	20	-	30
REC-S640 LIC-S540	68	22	22	22	22	20	20	16	40	40	38	15	19	-	-	40
REC-S3550G	120	25	30	30	35	28	22	19	54	54	54	15	20	-	-	50
REC-50M LIC-50	-	-	-	-	-	-	-	-	50	50	-	-	-	-	-	-
REC-54ACSR LIC-54ACSR	-	-	-	-	-	-	-	-	-	-	AL 32.4 ST 10.8	-	-	-	-	-
REC-54ACM LIC-54AC	-	-	-	-	-	-	-	-	54	54	-	-	-	-	-	-
REC-65M LIC-65	-	-	-	-	-	-	-	-	65	65	-	-	-	-	-	-
REC-105YC	120	-	-	-	-	-	-	-	80	80	-	-	-	105	-	105
SL-S20	66	16	20	20	20	16	16	13	20	20	21	15	16	-	-	18
SL-S40	68	22	22	22	22	20	20	16	40	40	38	15	19	-	-	40
SL-95YC	120	-	-	-	-	-	-	-	80	80	-	-	-	95	-	95
S-200	66	16	20	20	20	16	16	13	20	20	21	15	16	-	-	18
S-240	84	18	24	24	24	18	20	16	24	24	24	20	20	-	-	24
S-320	191	32	32	32	32	32	25	25	32	32	32	32	32	-	-	32
S-400	68	22	25	25	22	20	20	16	41	41	38	15	20	-	-	41

\* Single strand steel core only.

# Hand Hydraulic Cable Cutter

Cutting Capacity (Outer Diameter / mm)

Model	Output (kN)	Wire Rope (Hemp-core)			Bars				Strands					Other Cables		
																
		6X7	6X12	6X19	Soft Copper	Soft Aluminium	Soft Steel	Reinforcing	Bare Copper	Bare Aluminium	ACSR	1x7 Guy Steel Wire	1x19 Guy Steel Wire	Telephone cable (CCP)	Lead Sheathed Cable (Telephone Cable)	Underground cable
<b>S-550G</b>	124	25	30	30	35	28	22	19	54	54	54	15	20	-	-	50
<b>850</b>	39	-	-	-	-	-	-	-	28	38	-	-	-	85	85	50
<b>SP-20A</b>	39	16	20	20	20	16	16	13	20	20	21	15	16	-	-	18
<b>SP-24</b>	86	18	24	24	24	24	20	16	24	24	24	20	20	-	-	24
<b>YSP-30B</b>	66	-	-	-	-	-	-	-	28	28	19*	-	-	30	30	30
<b>SP-32</b>	214	32	32	32	32	32	25	25	32	32	32	32	32	-	-	32
<b>SP-40A</b>	76	22	25	25	22	20	20	16	41	41	38	15	20	-	-	41
<b>SP-55A</b>	118	25	30	30	35	28	22	19	50	50	50	15	20	-	-	50
<b>P-60</b>	76	-	-	-	-	-	-	-	60	60	-	-	-	60	60	60
<b>P-85</b>	41	-	-	-	-	-	-	-	28	38	-	-	-	85	85	50
<b>P-100A</b>	74	-	-	-	-	-	-	-	42	46	-	-	-	100	100	75
<b>P-105YC</b>	74	-	-	-	-	-	-	-	80	80	-	-	-	105	-	105
<b>P-132</b>	95	-	-	-	-	-	-	-	42	46	-	-	-	132	132	100

\* Single strand steel core only.

# Hydraulic Hose Selection Chart

Hydraulic Pump		Manual Operated		Motor Driven		Engine Driven Single Acting	Engine Driven Double Acting			Battery Operated
		HP-700A	FP-700A	R14E-H	R14E-A1	HPE-2A	HPE-4M	HPE-2D	HPE-4	REC-P600 REC-Li600P
Specification of Pump	Recommended Maximum Length of Hose	Fixed 2m + 1m	3m	Fixed 2m + 8m	15m	15m	20m	15m	20m	2m
	Reservoir Capacity	720cc	720cc	2 liter	3 liter	2.2 liter	10 liter	2.2 liter	10 liter	600cc
Head Type Tool		Oil Volume Required (cc)								
Hydraulic Compression & Crimping Head	EP-50H	18								
	EP-410H	42								
	EP-431H	50								
	EP-510HC	75								
	EP-610HS2	100								
	EP-250H	93								
	EP-520C	132								
	EP-60S	303								
	EP-60D	303								
	EP-100W	314								
	EP-200W	1,134								
	I2A	85								
	I6B	44								
Hydraulic Cutter Head	SP-20A	18								
	SP-24	33								
	SP-32	135								
	SP-40A	48								
	SP-55A	120								
	P-60	71								
	P-85	65								
	P-100A	140								
	P-105YC									
	P-132	220								
YSP-30B	18									
Hydraulic Puncher	SH-10	40								
	SH-70B	82								
Hydraulic Bender Squeezer	PB-10N	400								
	PB-15N	595								

= Applicable       = Not Applicable

## COMPRESSION DIES



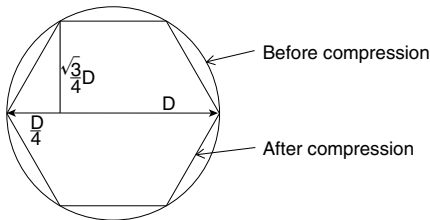
Compression dies are a critical part of compressor component since they influence electric characteristics of jointed conductors. As a compression tool manufacturer, we are also involved with die making. However, due to various standards and various fittings by each manufacturer, we do not have our own standard to meet each manufacturer's fittings. With detailed customer's information, we try our best to make suitable dies.

The following is example of information we need to make custom dies.

1. Fitting catalog number as well as conductor size.
2. Recommended die number already exists by fitting manufacturer.
3. Fitting outer diameter and inner diameter.
4. Type of conductor to be jointed.(Aluminum, Copper, ACSR, AAAC etc.)
5. Drawing of dies, groove dimension etc.

Usually fittings are compressed in an inscribed hexagon so that die across vertex distance equals to fitting outer diameter.

And compression ratio can be shown below.



D:Fitting outer diameter,  
Die across vertex distance

Area before compression:  $\frac{\pi}{4} D^2$

Area after compression:  $\frac{3}{8} \sqrt{3} D^2$

$$\text{Compression ratio: } \frac{\frac{3}{8} \sqrt{3} D^2}{\frac{\pi}{4} D^2} = 0.827$$

However, there are many other ways of compression defined by each fitting manufacturer and some have their complete line of dies.



If cutomers wish to machine their own grooves, we are also ready to supply blank dies.

In any case dies are a very important part of compression tools.

Please be aware of suggested die number by fitting manufacturer when fittings are purchased.

Next 6 pages show the list of dies available from Izumi.

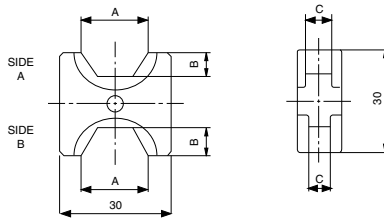
Equivalents indicated are closest equivalents and does not infer that they are identical, interchangeable or exact duplicates.

Izumi does not assume responsibility for error, omissions or subsequent changes.

**WIRE GAUGE**

AWG (MCM)	mm <sup>2</sup>	JIS	DIN
30	0.05		
28	0.05		
26	0.13		
24	0.20		
22	0.32		
20	0.52		
18	0.81		0.9
16	1.32	1.5	1.5
14	2.08	2	2
12	3.33		4
10	5.27	5.5	6
8	8.30	8	10
6	13.30	14	16
5	16.78		
4	21.09	22	25
3	26.57		
2	33.94	38	35
1	42.22		
1/0	53.52	60	50
2/0	67.51		70
3/0	85.16	80	95
4/0	107.22	100	
250 MCM	126.68	125	120
300	152.01	150	150
350	177.38		185
400	202.68	200	240
500	253.35	250	
600	304.02	325	300
700	354.69		
750	380.03		
800	405.36	400	400
900	456.03		
1000	506.70	500	500

## EP-50 DIES



## HEXAGONAL DIES FOR COPPER & ALUMINUM TERMINALS

(Suitable for DIN 46235 TERMINALS)

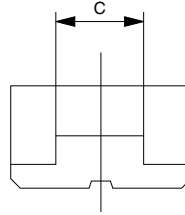
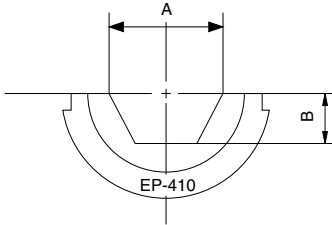
DIE NO.	SIDE		A	B	C
K6 & K8	A (K6)	Cu10	6.2	2.2	12
	B (K8)	Cu16	8.2	3.0	12
K10 & K12	A (K10)	Cu25 Al16	9.7	3.6	12
	B (K12)	Cu35 Al25	11.8	4.4	9
K14 & K16	A (K14)	Cu50 Al35	13.8	5.3	8
	B (K16)	Cu70 Al50	15.8	6.0	8
K18 & K20	A (K18)	Cu95 Al70	18.0	7.0	7
	B (K20)	Cu120 Al95	19.8	7.6	6

[mm<sup>2</sup>]

[mm]



## EP-410 DIES [Hexagonal Dies]



### HEXAGONAL DIES FOR COPPER & ALUMINUM TERMINALS

(Suitable for DIN 46235 TERMINALS)

DIE NO.		A	B	C
K6	Cu 10	6.2	2.2	12
K8	Cu 16	8.2	3.0	12
K10	Cu 25 Al 16	9.7	3.6	12
K12	Cu 35 Al 25	11.8	4.4	14
K14	Cu 50 Al 35	13.8	5.3	14
K16	Cu 70 Al 50	15.8	6.0	14
K18	Cu 95 Al 70	18.0	7.0	14
K20	Cu 120 Al 95	19.8	7.6	14
K22	Cu 150 Al 120	22.3	8.7	13
K25	Cu 185 Al 150	24.3	9.6	12
K28	Cu 240 Al 185	27.8	11.5	11
K32	Cu 300 Al 240	31.5	13.6	9
K34	Cu 400 Al 300	33.7	14.5	7

[mm<sup>2</sup>]

[mm]



### HEXAGONAL DIES

(Suitable for TERMINALS wall thickness little less than DIN 46235 terminals)

DIE NO.	A	B	C
10	5.98	2.59	12
16	7.20	3.12	12
25	8.48	3.67	12
35	10.00	4.33	14
50	11.60	5.02	14
70	13.73	5.95	14
95	15.90	6.88	14
120	17.98	7.79	14
150	20.10	8.70	13
185	22.33	9.67	12
240	25.43	11.01	11
300	28.44	12.32	9.5

[mm<sup>2</sup>]

[mm]

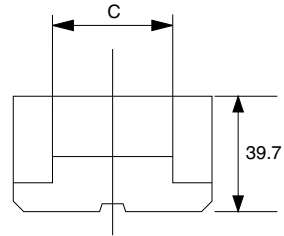
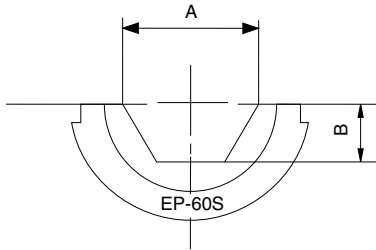
### HEXAGONAL DIES FOR COPPER TERMINALS

(Suitable for TERMINALS commonly used in South Asia)

DIE NO.		A	B	C
UL-10	Cu 10	6.2	2.2	9
UL-16	Cu 16	7.1	2.6	14
UL-25	Cu 25	8.8	3.2	14
UL-35	Cu 35	10.6	3.8	14
UL-50	Cu 50	12.4	4.7	16
UL-70	Cu 70	14.6	5.7	18
UL-95	Cu 95	17.4	6.3	16
UL-120	Cu 120	19.4	7.1	14
UL-150	Cu 150	21.2	7.8	13
UL-185	Cu 185	24	8.6	12
UL-240	Cu 240	26.5	9.7	10
UL-300	Cu 300	30	11	9

[mm<sup>2</sup>]

[mm]



### EP-60S DIES ALCOA TYPE DIES (HEXAGONAL)

DIE NO.	A	B	C
10SH	15.9	6.9	32.0
12SH	19.3	8.4	23.9
14SH	22.2	9.5	25.4
16SH	25.4	10.9	16.8
18SH	28.6	12.3	15.2
20SH	31.7	13.4	19.0
75SH	10.7	4.6	35.1
76SH	12.7	5.5	28.4
20AH	31.8	13.5	59.7
24AH	38.1	16.3	49.5
27AH	42.8	18.2	43.2
30AH	47.6	20.2	57.0
34AH	54.0	23.0	46.2
36AH	57.2	24.2	44.5
74AH	20.8	8.7	62.0
75AH	25.4	10.6	62.0
76AH	30.2	12.6	61.2

### EP-610HS DIES

HT61BP	P39RT	equivalent
HT31BR	P40RT	∕
HT61BU	P44RT	∕
HT61BV	P46RT	∕
HT61FC	P39ART	∕
HT61HJ	P40ART	∕
HT61FD	P44ART	∕
HT61AC	PKR	∕



### HEXAGONAL DIES FOR COPPER TERMINALS

Suitable Terminals wall thickness little less than  
Din 46235 Terminals.

DIE NO.	Conductor size	O.D. of Lug	A	B	C
300	Cu 300	28.4	29.4	12.49	10.8
400	Cu 400	32.8	35.9	15.3	9
500	Cu 500	36.7	37.8	15.89	8.2
630	Cu 630	41.2	43.8	18.49	7.2

[mm<sup>2</sup>]

[mm]

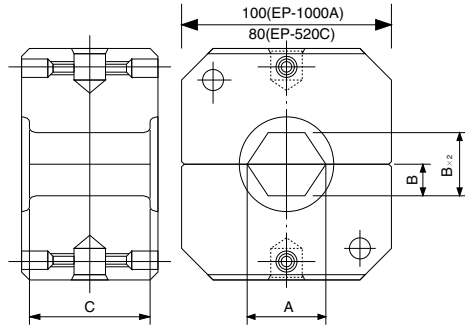
### DIES FOR H TYPES

Following Dies for H-TAP use are available.

N58	EP-410	EP-610HS1
HT58G (WBG)	HT41G (UBG)	HT61AC(PKR)
HT58AK (WO)	HT41AK (UO)	
	HT41V (UD)	
	HT41X (UD3)	
	HT41AJ (UN)	



## EP-520C DIES [Hexagonal Dies]



DIES FOR COPPER CONDUCTOR (Suitable for JIS C2804 Terminals)

Tool	DIE NO.	EP-520C			EP-1000A		
		A	B	C	A	B	C
EP-1000A EP-520C	1000-64				64	27.71	19
	725-850-56				56	24.26	22
	600-51				51	22.08	24
	400-500-47	47	20.35	15	47	20.35	26
	325-42	42	18.19	17	42	18.19	29
	250-38	38	16.45	19	38	16.45	32
	240-36	36	15.59	20	36	15.59	34
	180-200-32	32	13.86	22	32	13.86	38
	150-29	29	12.56	24	29	12.56	42
	110-125-26	26	11.26	27	26	11.26	47
	75-100-23	23	9.96	31	23	9.96	53
	45-70-19	19	8.23	37	19	8.23	60
	22-38-14	14	6.06	42	14	6.06	60
	8-14-12	12	5.20	25	12	5.20	25

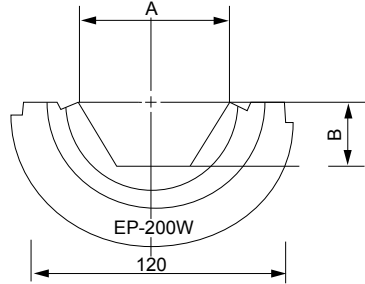
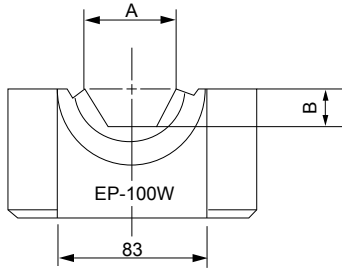
DIES FOR ALUMINUM CONDUCTOR (Suitable for JIS C2804 Terminals)

Tool	DIE NO.	EP-520C			EP-1000A		
		A	B	C	A	B	C
EP-1000A EP-520C	980-1000-71				71	30.74	40
	850-65				65	28.15	45
	600-725-60				60	25.98	48
	500-590-52	52	22.52	33	52	22.52	55
	380-430-48	48	20.78	39	48	20.78	60
	400-44	44	18.55	40	44	18.55	60
	325-42	42	18.19	42	42	18.19	60
	300-38	38	15.95	42	38	15.95	60
	200-250-34	34	14.20	42	34	14.20	60
	125-180-30	30	12.50	42	30	12.50	60
	80-110-26	26	11.26	42	26	11.26	60
	45-70-22	22	9.53	42	22	9.53	60
	30,38-18	18	7.79	42	18	7.79	60
	30,38-16	16	6.93	42	16	6.93	60

DIE NO. has a following meaning.

(500-590-52 : 500-590 mm<sup>2</sup> conductor use, die across vertex distance is 52mm)

## EP-100W/EP-200W DIES



### FOR STEEL SLEEVES

C : Die Width

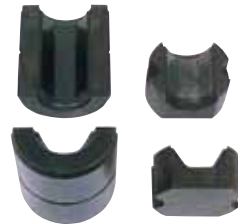
DIE NO.	A	B	C (100/200)
S8.5	8.5	3.7	50 -
S10	10	4.3	45 -
S12	12	5.2	40 -
S16	16	6.9	40 -
S18	18	7.8	35 -
S20	20	8.7	35 -
S22	22	9.5	35/70
S23	23	10.0	30 -
S24	24	10.4	30/60
S26	26	11.3	30/60
S28	28	12.1	28/60
S30	30	12.99	25 -
S32	32	13.9	25 -
S44	44	19.1	- 35
S50	50	21.7	- 30

### FOR COPPER LUGS

DIE NO.	A	B	C (100/200)
C14	14	6.1	60 -
C17	17	7.4	60 -
C19	19	8.2	60 -
C23	23	10.0	60 -
C26	26	11.3	60 -
C29	29	12.6	60 -
C32	32	13.9	60 -
C36	36	15.6	55 -
C38	38	16.5	55 -
C42	42	18.2	55 -
C47	47	20.4	50 -
C50	50	21.7	50 -
C51	51	22.0	50 -
C54	54	23.4	50 -
C56	56	24.3	40 -
C57	57	24.7	40 -
C63	63	27.3	- 70
C64	64	27.7	35 -
C68	68	29.4	- 70
C73	73	31.6	- 65
C78	78	33.8	- 64
C85	85	36.8	- 60
C86	86	37.23	- 60

### FOR ALUMINUM SLEEVES

DIE NO.	A	B	C (100/200)
A22	22	9.5	75/128
A26	26	11.3	75/128
A30	30	12.5	75/128
A34	34	14.2	75/128
A38	38	16.0	75/128
A42	42	18.2	75/128
A44	44	18.6	75/128
A48	48	20.8	75/128
A52	52	22.5	75/128
A60	60	26.0	75/128
A65	65	28.2	75/128
A68	68	29.4	75/128
A71	71	30.7	75/128
A76	76	32.9	- 128
A90	90	39.0	- 128
A100	100	43.3	- 128



# Size of Conduit JIS standard type

## Thin Conduit (A)

RANGE		Shoe Size	R	Conduit size		① Outer Diameter	② Inner Diameter	③ Wall Thickness
PB-15N	PB-10N	A15	80	15	5/8	15.9	13.5	1.2
		A19	100	19	3/4	19.1	15.9	1.6
		A25	137	25	1	25.4	22.2	1.6
		A31	200	31	1, 1/4	31.8	28.6	1.6
		A39	220	39	1, 1/2	38.1	34.9	1.6
		A51	365	51	2	50.8	47.6	1.6
		A63	420	63	2, 1/2	63.5	59.5	2.0
		A75	530	75	3	76.2	72.2	2.0

(inch) (mm) (mm) (mm)

## Thick Conduit (B)

RANGE		Shoe Size	R	Conduit size		① Outer Diameter	② Inner Diameter	③ Wall Thickness
PB-15N	PB-10N	B16	75	16	1/2	21.0	16.4	2.3
		B22	90	22	3/4	26.5	21.9	2.3
		B28	130	28	1	33.3	28.3	2.5
		B36	195	36	1, 1/4	41.9	36.9	2.5
		B42	230	42	1, 1/2	47.8	42.8	2.5
		B54	270	54	2	59.6	54.0	2.8
		B70	450	70	2, 1/2	75.2	69.6	2.8
		B82	500	82	3	87.9	82.3	2.8
		B92	500	92	3, 1/2	100.7	93.7	3.5
		B104	680	104	4	113.4	106.4	3.5

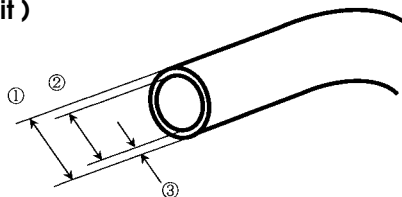
(inch) (mm) (mm) (mm)

## Gas Pipe (SGP)

RANGE		Shoe Size	R	Conduit size		① Outer Diameter	② Inner Diameter	③ Wall Thickness
PB-15N	PB-10N	SGP 15	60	15	1/3	21.7	16.1	2.8
		SGP 20	80	20	3/4	27.2	21.6	2.8
		SGP 25	100	25	1	34.0	27.6	3.2
		SGP 32	130	32	1, 1/4	42.7	35.7	3.5
		SGP 40	160	40	1, 1/2	48.6	41.6	3.5
		SGP 50	220	50	2	60.5	52.9	3.8
		SGP 65	320	65	2, 1/2	76.3	67.9	4.2
		SGP 80	425	80	3	89.1	80.7	4.2
		SGP 90	550	90	3, 1/2	101.6	93.2	4.2
		SGP 100	600	100	4	114.3	105.3	4.5

(inch) (mm) (mm) (mm)

### ( Conduit )



**ISO 9001**  
**ISO 14001**  
**BUREAU VERITAS**  
Certification



Head Office in Matsumoto



3039 Sasaga, Matsumoto, Nagano-ken, 399-8721 JAPAN

Tel : +81-263-58-5757 Fax : +81-263-86-1002

URL : <http://www.izumi-products.co.jp>

E-mail : [tool@izumi-products.co.jp](mailto:tool@izumi-products.co.jp)