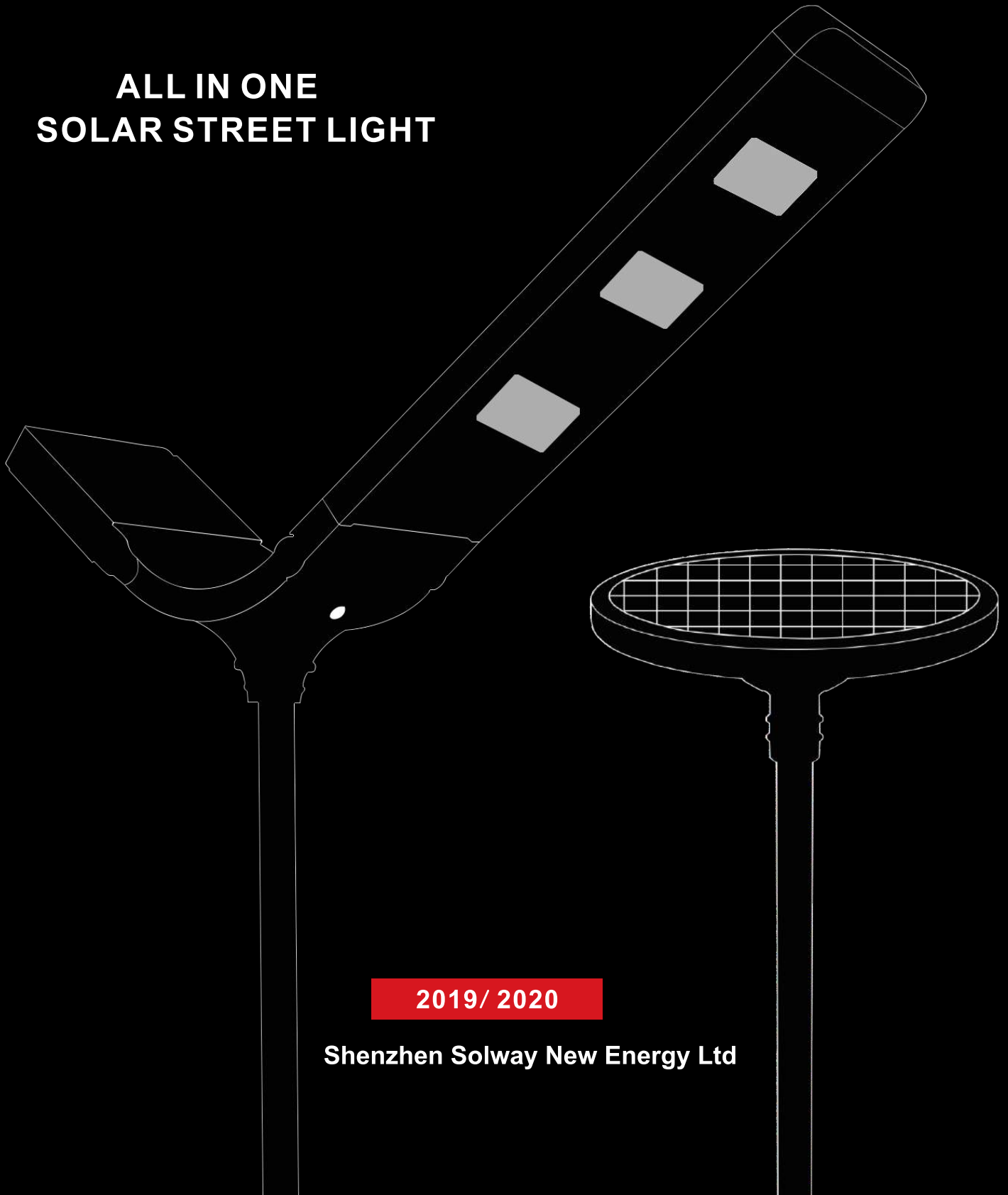




**ALL IN ONE  
SOLAR STREET LIGHT**



**2019/ 2020**

**Shenzhen Solway New Energy Ltd**

# Company Profile



## Shenzhen Solway New Energy Ltd

SOLWAY New Energy founded in 2010, is a manufacturer specialized in the design and manufacturing of ALL IN ONE solar street lights, solar garden lights, and other solar related lighting products.

Our products has been designed to meet high quality requirement of government projects and private projects that needs high quality solar lights, more than 10000 units are exported monthly and most of the products we have been supplied and installed are for government projects in South America, South East Asia, Middle East and Africa etc.

With very strong product development and design capability, latest lithium pack technology and charging technology, we always serve our clients with reliable innovative and unique products, we provide OEM/ODM services as well as our standard solar lights products.

Contact us today to learn more about our products and service !







**10**  
years  
lifetime



BMS-20



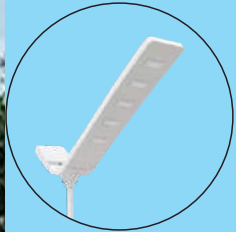
BMS-40



BMS-70



BMS-90

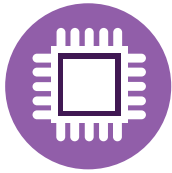


BMS-120

# Batman Series-Deluxe Design



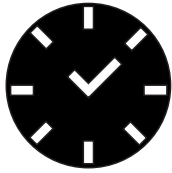
## Core Technology



Energy Management System 3.0



Solar panel 21%



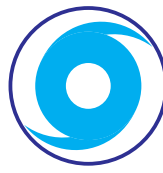
10 Years Lifetime



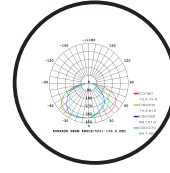
5 Years Warranty



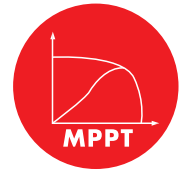
IP 66



16 Grade Wind Proof



Large Light Distribution



MPPT Charging Technology

SAA CE RoHS IEC SASO UN38.3 IP66

## Parameters

Model No.	BMS-20	BMS-40	BMS-70	BMS-90	BMS-120
Light Output	20W	40W	70W	90W	120W
Battery	111WH	222WH	388.5WH	444WH	583WH
Lumen output	2000 lm	4000 lm	7000 lm	9000 lm	12000 lm
Recommended Installation Height	4-6 m	4-6 m	4-6 m	6-8 m	8-10 m
Recommended Mounting Distance	15 m	20 m	25 m	25 m	30 m
LED Chip	<b>NICHIA</b>				
Warranty	5 Years				
CCT	5000k-6500k				
Beam Angle	157*60 degree				
Lamp Angle	0/ 30 degree				
Rainy Days Backup Time	7-10 days				
Dim Mode	First 3 hours full brightness, last 9 hours in dimmable mode(60% brightness with people, 30% brightness without people)				
Working Temperature	-20°C to 60°C				
Charging Time	9-11 hours				
Required Pole Size	60mm(top end)				





**10**  
years  
lifetime



KB-20

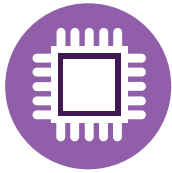


KB-40

# Kingbox Series-Traffic Safety Design



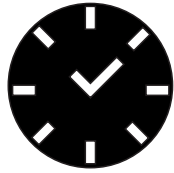
## Core Technology



Energy Management System 3.0



Solar panel 21%



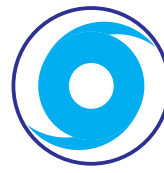
10 Years Lifetime



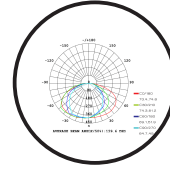
5 Years Warranty



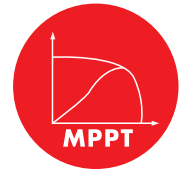
IP 66



16 Grade Wind Proof



Large Light Distribution

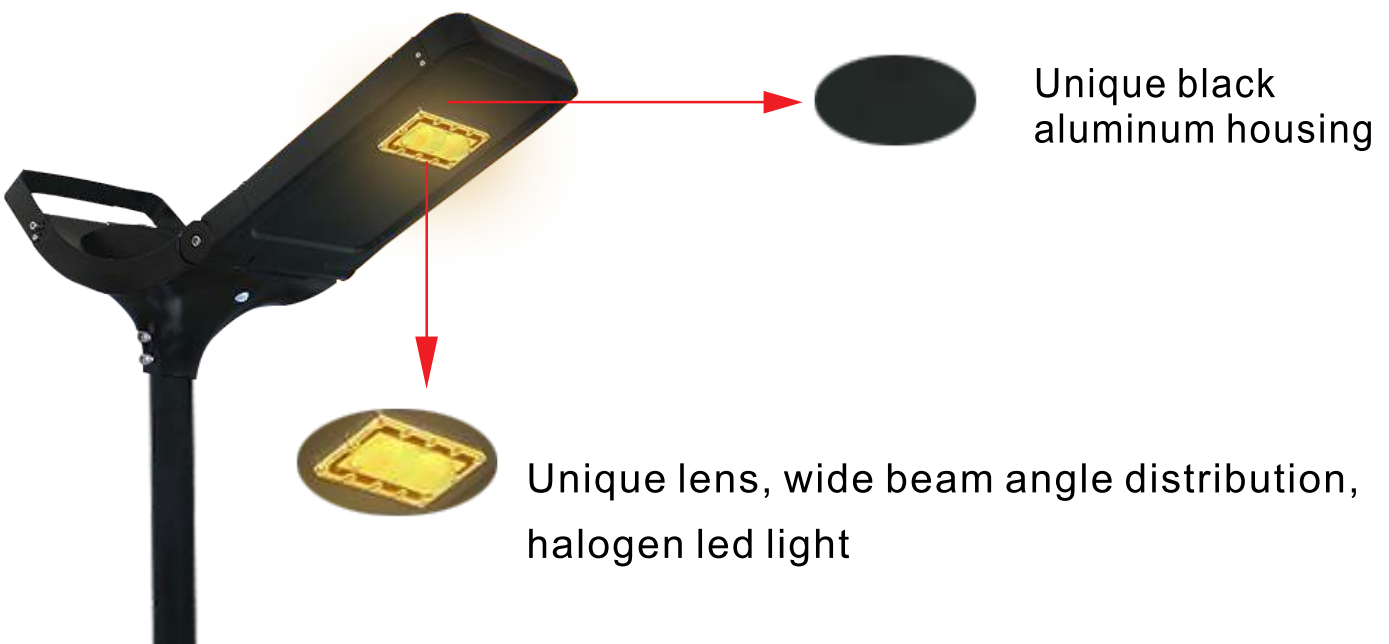


MPPT Charging Technology

SAA CE RoHS IEC SASO UN38.3 IP66

## Parameters

Model No.	KB-20	KB-40
Light Output	20W	40W
Battery	111WH	222WH
Lumen output	1500lm	2800lm
Recommended Installation Height	4-6m	4-6m
Recommended Mounting Distance	25m	25m
LED Chip	<b>NICHIA</b>	
Warranty	5 Years	
CCT	Halogen Light Color	
Beam Angle	157*60 degree	
Lamp Angle	0/30 degree	
Rainy Days Backup Time	7-10 days	
Dim Mode	First 3 hours full brightness, last 9 hours in dimmable mode(60% brightness with people, 30% brightness without people)	
Working Temperature	-20°C to 60°C	
Charging Time	9-11 hours	
Required Pole Size	60mm(top end)	





**8**  
years  
lifetime



EBM-30



EBM-40



EBM-60



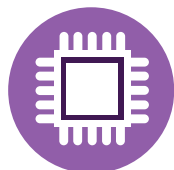
EBM-80



# Airship Series-Standard Design



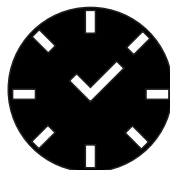
## Core Technology



Energy Management System 3.0



Solar panel 21%



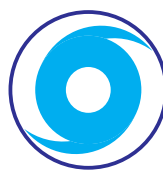
8 Years Lifetime



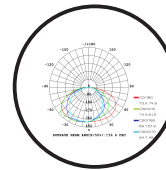
3 Years Warranty



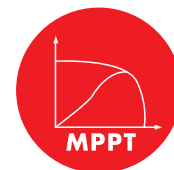
IP 66



16 Grade Wind Proof



Large Light Distribution

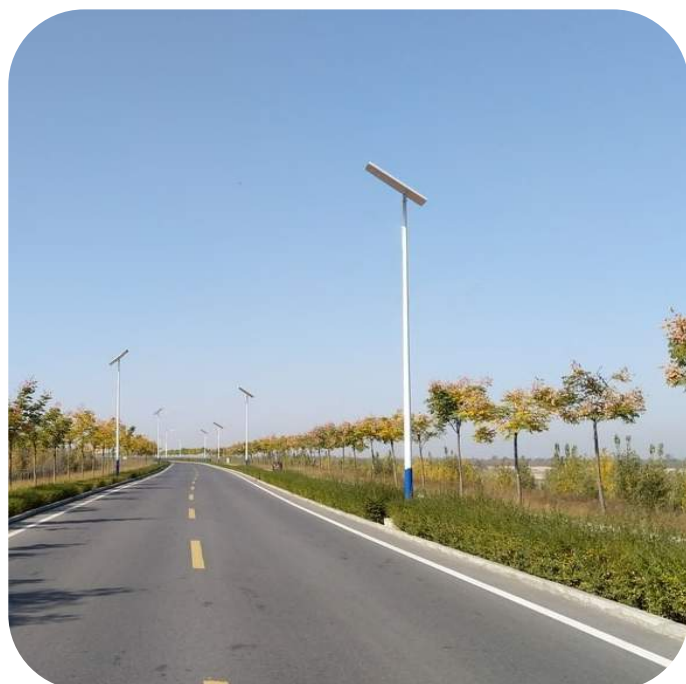


MPPT Charging Technology

SAA CE RoHS IEC SASO UN38.3 IP66

## Parameters

Model No.	EBM-30	EBM-40	EBM-60	EBM-80
Light Output	30W	40W	60W	80W
Battery	222WH	388.5WH	444WH	583WH
Lumen output	4200 lm	5600 lm	8100 lm	11000 lm
Recommended Installation Height	4-6 m	4-6 m	6-8 m	8-10 m
Recommended Mounting Distance	25 m	25 m	25 m	25 m
LED Chip	<b>NICHIA</b>			
Warranty	3 Years			
CCT	5000k-6500k			
Beam Angle	157*60 degree			
Lamp Angle	Adjustable multiple angles			
Rainy Days Backup Time	7-10 days			
Dim Mode	First 3 hours full brightness, last 9 hours in dimmable mode(60% brightness with people, 30% brightness without people)			
Working Temperature	-20°C to 60°C			
Charging Time	9-11 hours			
Required Pole Size	60mm(top end)			



**8**  
years  
lifetime



BKS-20



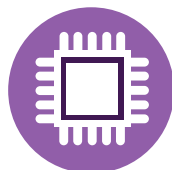
BKS-30



# Knight Series-Classic Design



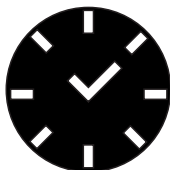
## Core Technology



Energy Management System 3.0



Solar panel 21%



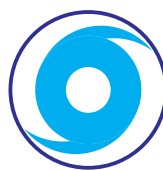
8 Years Lifetime



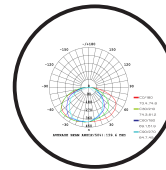
2 Years Warranty



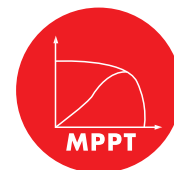
IP 66



16 Grade Wind Proof



Large Light Distribution



MPPT Charging Technology

SAA CE RoHS IEC SASO UN38.3 IP66

## Parameters

Model No.	BKS-20	BKS-30
Light Output	20W	30W
Battery	111WH	178WH
Lumen output	1500lm	3000lm
Recommended Installation Height	3-4m	3-5m
Recommended Mounting Distance	20m	20m
LED Chip		
Warranty	2 Years	
CCT	5000k-6500k	
Beam Angle	145*60 degree	
Lamp Angle	0/15/30 degree	
Rainy Days Backup Time	7-10 days	
Dim Mode	First 3 hours full brightness, last 9 hours in dimmable mode(60% brightness with people, 30% brightness without people)	
Working Temperature	-20°C to 60°C	
Charging Time	9-11 hours	
Required Pole Size	60mm(top end)	





**8**  
years  
lifetime



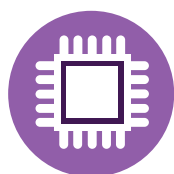
BKS-50



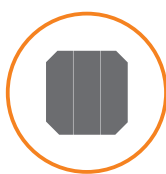
BKS-60



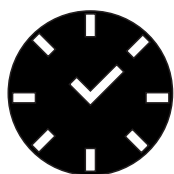
## Core Technology



Energy Management System 3.0



Solar panel 21%



8 Years Lifetime



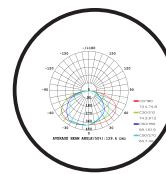
2 Years Warranty



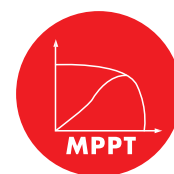
IP 66



16 Grade Wind Proof



Large Light Distribution



MPPT Charging Technology

SAA CE IEC SASO UN38.3 IP66

## Parameters

Model No.	BKS-50	BKS-60
Light Output	50W	60W
Battery	222WH	356WH
Lumen output	4500lm	6000lm
Recommended Installation Height	4-6m	5-7m
Recommended Mounting Distance	25m	25m
LED Chip		
Warranty	2 Years	
CCT	5000k-6500k	
Beam Angle	145*60 degree	
Lamp Angle	0/15/30 degree	
Rainy Days Backup Time	7-10 days	
Dim Mode	First 3hours full brightness, later 3hours 60% brightness, last 6 hours 20% brightness	
Working Temperature	-20°C to 60°C	
Charging Time	9-11 hours	
Required Pole Size	60mm(top end)	





Model No.	BST-16
Light Output	50W
Battery	111WH
Lumen output	3000lm
Recommended Installation Height	3-5m
Recommended Mounting Distance	10-20m
LED Chip	
Warranty	2 Years
CCT	5000k-6500k
Beam Angle	360 degree
Rainy Days Backup Time	7-10 days
Dim Mode	First 5 hours: 50% brightness, Last 5 hours in dimming mode (100% with people, 20% without people)
Working Temper	-20°C to 60°C
Charging Time	9-11 hours
Required Pole Size	60mm(top end)







360 Degree Light Distribution

SOLAR  
GARDEN  
LIGHT

8

years  
lifetime



GKS-1F



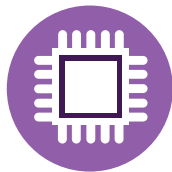
GKS-1B



# GKS Series Solar Light



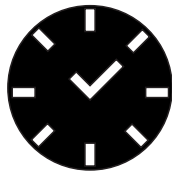
## Core Technology



Energy Management System 3.0



Solar panel 23%



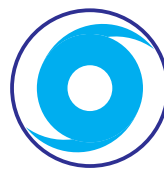
8 Years Lifetime



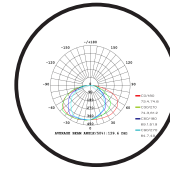
2 Years Warranty



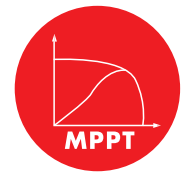
IP 66



16 Grade Wind Proof



Large Light Distribution



MPPT Charging Technology

SAA CE RoHS IEC SASO UN38.3 IP66

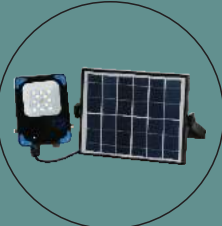
## Parameters

Model No.	GKS-1B	GKS-1F
Light Output	30W	
Solar Panel	Monocrystalline silicon 12W	
Battery	3.7V 20AH	
Lumen output	1500 lm	
LED Chip	SEOUL	
Warranty	2 Years	
CCT	5000k-6500k	
Beam Angle	160 degree	
Rainy Days Backup Time	7-10 days	
Dim Mode	First 4 hours full brightness, later 4 hours 50% brightness, last 4 hours 25% brightness	
Working Temperature	-20°C to 60°C	
Charging Time	6-8 hours	
Required Pole Size	60 mm(top end)	
Installations	Round pole/Square pole/Wall mount	
Recommended Installation Height	2-3m	

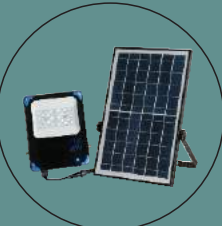




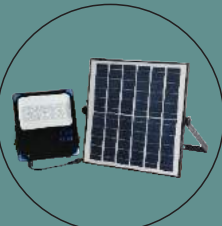
8  
years  
lifetime



WP-1



WP-2



WP-3



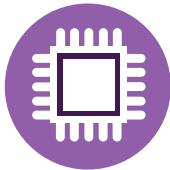
WP-4



# Warship Series-Solar flood light



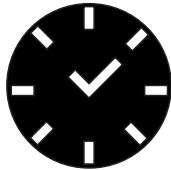
## Core Technology



Energy Management System 3.0



Solar panel 21%



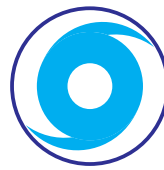
8 Years Lifetime



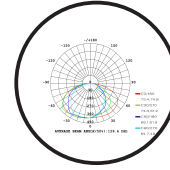
3 Years Warranty



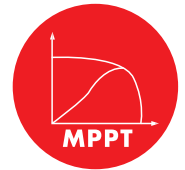
IP 66



16 Grade Wind Proof



Large Light Distribution



MPPT Charging Technology

SAA CE RoHS IEC SASO UN38.3 IP66

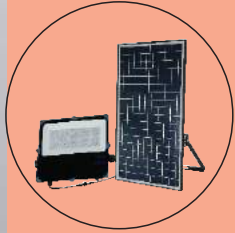
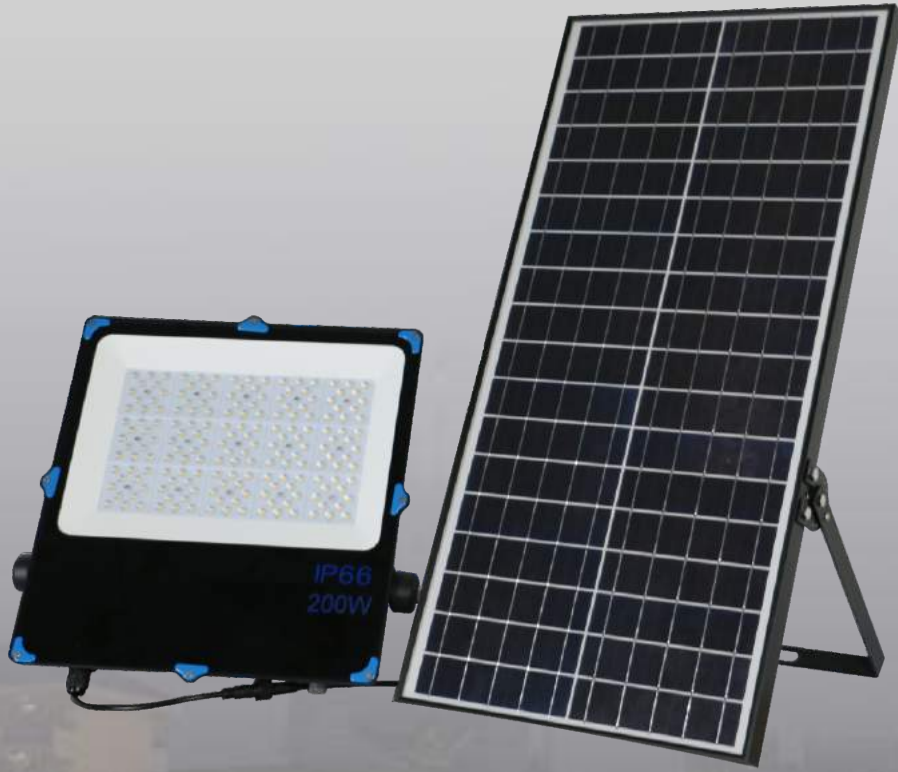
## Parameters

Model No.	WP-1	WP-2	WP-3	WP-4
Light Output	10W	30W	50W	80W
Lumen output	500lm	1800lm	3000lm	5500lm
LED CHIP				
CCT	5000k-6000k			
Beam Angle	30/60/90/120 degree			
Charging Time	9-11 hours			
Rainy Days Backup Time	7-10 days			
Dim Mode	First 4 hours full brightness, later 4 hours 50% brightness, last 4 hours 25% brightness			
Working Temperature	-20 degree to 60 degree			
Warranty	3 years			

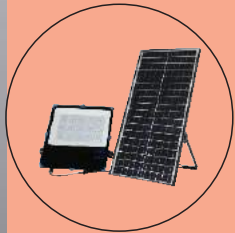




**8**  
years  
lifetime



WP-5



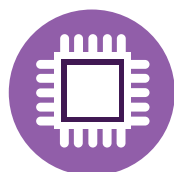
WP-6



WP-7



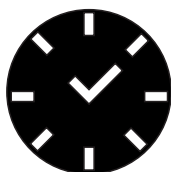
## Core Technology



Energy Management System 3.0



Solar panel 21%



8 Years Lifetime



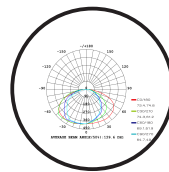
3 Years Warranty



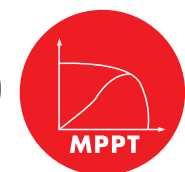
IP 66



16 Grade Wind Proof



Large Light Distribution



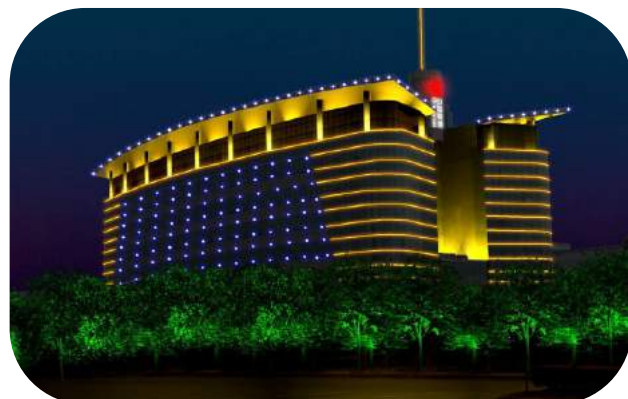
MPPT Charging Technology



SASO UN38.3 IP66

## Parameters

Model No.	WP-5	WP-6	WP-7
Light Output	100W	200W	300W
Lumen output	7000lm	10000lm	15000lm
LED CHIP			
CCT	5000k-6000k		
Beam Angle	30/60/90/120 degree		
Charging Time	9-11 hours		
Rainy Days Backup Time	7-10 days		
Dim Mode	First 4 hours full brightness, later 4 hours 50% brightness, last 4 hours 25% brightness		
Working Temperature	-20 degree to 60 degree		
Warranty	3 years		



# Executed Project References

Project 1: china



Project 2: Middle East



Project 3: Middle East



Project 4: Southeast Asia



Project 5: Middle East



Project 6: Africa



Project 7: China



Project 8: Asia



Project 9: USA



Project 10: Southeast Asia



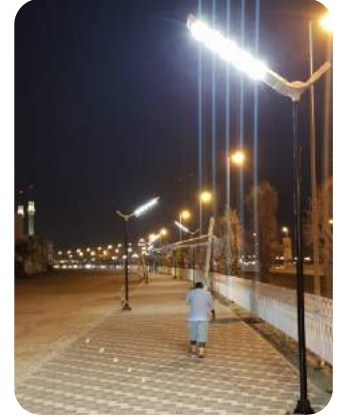
Project 11: Middle East



Project 12: Middle East



Project 13: Middle East



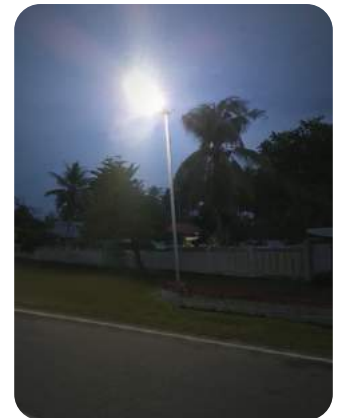
Project 14: Africa



Project 15: Middle East



Project 16: Africa



Project 17: Southeast Asia



Project 18: Asia



Project 19: Asia



Project 20: Southeast Asia







website



youtube

**Main Office:** #2T. Cruz St. Cruzville, Zabarte Rd. Novaliches  
Quezon City, Metro Manila, Philippines 1123

**Tel.:** (+63 2) 3-417-4333 • 3-417-5435 • 3-418-7079  
3-419-9138 • 3-419-9166

**FAX:** (+63 2) 8-930-5499 • 7-729-3471

**Facebook:** [www.facebook.com/hytecpowerincorporated](http://www.facebook.com/hytecpowerincorporated)

**Website:** [www.hytecpower.net](http://www.hytecpower.net)

**Email:** [training@hytecpower.com](mailto:training@hytecpower.com)

**Engr. Eric Jude S. Soliman**

President

**Mobile#:** (+63) 917-531-1624 / 922-866-2801  
939-907-0620

**Tel #:** (+63 2) 7-975-2142 (Direct Line)

**E-mail:** [ejssoliman@hytecpower.com](mailto:ejssoliman@hytecpower.com)