

Quieter Gears

Austempered Ductile Iron (ADI) outperforms steel as demonstrated in these road test results on hypoid gears:

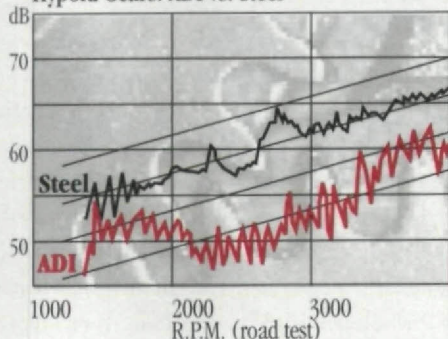
Switching from steel to Austempered Ductile Iron (ADI) will also add these benefits:

- Cast to nearer net shape and reduced machining cost
- Lighter weight
- Lower overall cost

Applied Process, Inc. is the world leader in austempering. Call today or visit our website to learn how Austempering can make your parts quieter.



Hypoid Gears: ADI vs. Steel



*Livonia, MI *Oshkosh, WI Elizabethtown, KY
Melbourne, Australia Birmingham, England
Ph: (734) 464-2030 Ex. 31 Fax: (734) 464-6314
Email: jkeough@appliedprocess.com
web: www.appliedprocess.com

CIRCLE 173

RENEW YOUR SUBSCRIPTION ONLINE



IT'S FAST! IT'S EASY!
www.geartechnology.com

Mitsubishi Machine Tools Opens New Tech Center

MHI Machine Tool U.S.A., Inc., has announced the opening of its new Southeastern Technical Center. Located in Greensboro, North Carolina, the new Technical Center showcases the latest product developments for Mitsubishi's entire line of machining centers, turning centers, cylindrical grinders, gear production machinery, Flexible Manufacturing Systems (FMS) and more.

The staff at the new Mitsubishi Southeastern Technical Center will be available to answer design and manufacturing questions and to assist in developing innovative solutions. The center is located in the Deep River Business Park, 7860 Thorndike Road, Greensboro, North Carolina.

Mahr Promotes Hochwart to President, Parker to Vice President

Thomas Keidel, Chairman of the Board of Mahr GmbH, Germany, announced the promotion of Edgar Hochwart to President of Mahr's North American operations and Donald Parker to Vice President. Hochwart, a 13-year Mahr employee, has been Executive Vice President and General Manager for North America since November 1997. Parker formerly served as National Sales Manager.

About the promotions, Hochwart said, "Mr. Parker and I pledge to continue the strengthening of Mahr customer support we began one year ago. In that time we've added more applications, engineering and other after sales support personnel to our Cincinnati headquarters. We also opened additional Measurement Resource Centers in North Carolina and California, and increased our presence in Mexico and Canada—all with the goal of delivering exceptional customer service along with our industry-leading measurement products."

PresMet to Double Production Capacity

The PresMet Corporation has announced the purchase of two additional buildings to meet current and anticipated production demands for powder metal parts. The company's \$10 million investment includes the cost of the buildings and the new equipment that will be housed in them. When completed, the new site will double the company's manufacturing operations. The new facilities add 60,000 square feet of production space.

"Work will begin immediately on these facilities and we expect to be operational by the second quarter of 1999," said Julia E. Gwinn, President of PresMet. "The ever-expanding acceptance of powder metallurgy as a viable metal forming process has increased the demand for the high-performance, high-tolerance parts we produce. This is especially evident in the automotive industry where it is anticipated that the use of metal powder will increase anywhere from 20 to 30 percent by 2002. PresMet anticipates it will exceed those industry growth figures for that time frame."

Tell Us What You Think . . .

If you found this article of interest and/or useful, please circle 216.