

oelhelt
innovative fluid technology

Innovative grinding fluids...

...to get your production into gear.



oelhelt U.S., Inc. • 1760 Britannia Drive, Unit 1 • Elgin, Illinois 60124
phone: +1-(847)-531-8501 • fax: +1-(847)-531-8511
E-Mail: hutec-us@oelhelt.com • web: www.oelhelt.com

Visit us at Booth #767



CHENTA **GEARKING**

GEARKING
Precision Gears

Visit us at Booth 719!
Sept 17-19 at the 2013 Gear Expo

www.gearking.com tel: 949-579-2789 info@gearking.com

GEAREXPO 2013
The Worldwide Gear Industry Event

Visit us at Booth #719

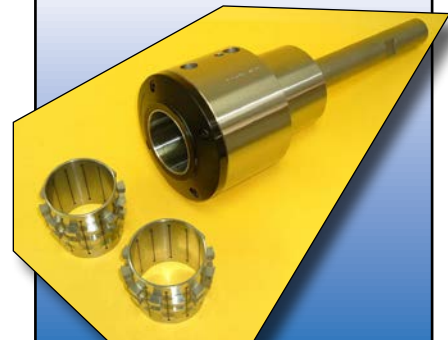
GEAR RESOURCE TECHNOLOGIES



GEAR TOOLING SPECIALISTS SINCE 1997



CYLINDRICAL + BEVEL ALL PROCESSES



www.gear-resource.com

585.383.9160

Visit us at Booth #750



It's time to shift gears—by combining complex machining processes on standard machines.

Revolutionary gear-milling solutions from DMG / MORI SEIKI USA enable all types of gear machining with innovative milling programs and off-the-shelf tooling—so you can slash setup times and boost profit.



www.dmgmorseikiusa.com | 855-364-6674
SEE THE LATEST GEAR-MILLING SOLUTIONS AT BOOTH 631



Visit us at Booth #631

Drinks Are On Us

Free Cappuccino

Free Espresso

Free Latte

Kick up your feet and join us at Gear Expo

gear
TECHNOLOGY



EMUGE Precision Workholding Solutions



*Above: **System SV** design for the machining of bearing seats on a bevel gear.*

- **System SM**—Diaphragm design for holding gears in the pitch diameter.
- **System SG**—Expanding-bush design for accurate high torque machining.
- **System SP**—High precision workpiece and tool clamping.
- **System SZ**—Ideal for short workpiece base clamping.

800-323-3013
www.emuge.com

Visit us at Booth #505

Kashifuji

100th Anniversary
GEAR HOBBING



GEAR HONES



GEAR INSPECTION

Celebrate with us at
BOOTH 1240

Tel +1.586.677.3910 Fax +1.586.677.3912 • sales@involutegearmachine.com
51200 Milano Drive, Suite D • Macomb, Michigan 48042 USA

Visit us at Booth #1240

Solutions to drive business & sustainability



RomaxDESIGNER

The ultimate solution for any gearbox, transmission & driveline design project, from planning to manufacturing. The core of a seamlessly integrated tool chain.



CONCEPT

Accelerate time to market & improve product quality with integrated conceptual design software.



CAD FUSION

Enhance the power of **RomaxDESIGNER** & **CONCEPT**, seamless integration with CAD tools for improved work flow efficiency & enhanced product development.



Dynamic FUSION

Reduce multibody model development time by extracting complex, user selectable geartrain information directly from **RomaxDESIGNER**.



Romax
TECHNOLOGY

w: www.romaxtech.com
e: sales@romaxtech.com

Visit us at booth #607



Visit us at Booth #607

Unlocking the Vault

We've optimized almost 30 years of gear manufacturing articles with our enhanced search engine at

www.
geartechnology
.com.

Stop by the *Gear Technology* booth (#1123) during Gear Expo to get a quick onsite demonstration.

gear
TECHNOLOGY



www.geartechnology.com/
issues.

New Value for Small Gear Measurement



Wenzel GearTec presents the new WGT 280, the first model in a new generation of gear measuring machines with a new industrial design. The WGT 280 extends the innovative WGT series with a measuring machine especially designed for small gears and rotationally symmetrical parts.

- The high precision rotary table can be loaded with parts weighting up to 50 kg.
- Equipped with the Renishaw SP 600 standard.
- Allows for measurements in a Z range of up to 500 mm.
- Can be equipped with a tail stock for the accurate measurement of shafts.

For more information visit Liebherr Gear Technology, Inc. at Booth 510 or contact them at:

LIEBHERR

Liebherr Gear Technology, Inc.
1465 Woodland Dr. Saline, MI 48176
734.944.6314 www.liebherr.us

Supplying the Best Value in

CMM



Gear Inspection



3D Imaging



WENZEL®



find us on
facebook

28700 Beck Rd. Wixom, Michigan 48393 Ph: 248.295.4300 www.wenzelamerica.com



Visit us at Booth #510

Gear and Gear Drive Marketing

101

Sponsored by

Power Transmission Engineering

Attend our free breakfast seminar to learn more about marketing your gears and gear drive products. Learn how to build brand identity and make use of the latest tools from Power Transmission Engineering, the magazine for gear buyers.

When

Wednesday, September 18th
8:15 am

All attendees receive a free gift, and one lucky attendee wins a complete advertising program valued at \$10,000

Reservation and admission ticket required for early entrance to show floor

RSVP – dave@
powertransmission.com
or (847) 437-6604

Visit us at Booth #1123

Broadway Gear

Focus on fine module gears for 44 years

Broadway Gear combines the capabilities of one of China's largest gear manufacturers with the dedicated service of a Texas based sales office to meet your precision gearing needs.

- Custom Gears
- Custom Gearboxes
- Miniature Gearboxes
- Planetary Gearboxes

Assure quality and delivery on time with certifications.

AS9100 REV.
C:2009 + ISO9001:2008

ISO/TS 16949:2009
Certificate by TÜV SÜD

ISO 9001-2000
Certification



Broadway Gear Inc.

info@broadwaygear.com
www.broadwaygear.com

4911 Olsen Drive • Dallas, TX 75227
Phone: 972-351-8737 • Fax: 972-268-9920

Visit us at Booth #914



BOHLE MACHINE TOOLS, INC.
PLYMOUTH, MICHIGAN
WHEN YOU NEED SOMETHING BETTER

Finest German machine tool companies

Hard turning, grinding, milling and honing

Bearings, gears, shafts, worm gears and shafts, etc.

Service and spare parts supply directly from the US



Hard machining
of axially
symmetrical parts



High-Speed
Honing



Lateral surface
grinding machines



Milling-Turning-
Grinding Center
for complete machining



Visit www.bmtbohle.com or call us at 734-414-8220

Meet us at Booth #1152 to see the full range of our products

More than custom gears... Engineered drive solutions.

We have been manufacturing custom gears and drives for more than 90 years. We have over 100 engineers on staff worldwide engaged in design and testing, and our North American manufacturing facility encompasses 600,000 square feet of advanced machine tools with extensive heat treatment. We have the expertise and scale to handle your largest programs. Rely on us to develop your custom engineered gears, components and complete driveline solutions.

Oerlikon Drive Systems

oerlikon | **oerlikon**
fairfield | graziano

AMERICAS

U.S. 52 South / P.O. Box 7940
Lafayette, Indiana 47903

765.772.4000

www.oerlikon.com/drivesystems

Visit us at Booth #1117

Renew Your Vows

Say "I Do" to another year of the finest technical publication in the gear industry. Why not stop by **Booth #1123** and update your subscription?

Print and Digital
Subscriptions Available

Sign up for Product Alerts
and E-Newsletters

Did we mention it's free?

gear
TECHNOLOGY

Visit us at
Booth #1123

BeaverMatic

- Manufacturer of performance proven heat treating equipment for fifty years
- World's largest Internal Quench Furnace with 15,000 pound workload for large gears

52" O.D. /
4,200 lb. gear
processed in a
BeaverMatic
Box Furnace

815.963.0005

Fax: 815.963.5673

BEAVERMATIC, Inc.

www.beavermatic.com

E-mail: sales@beavermatic.com

Visit us at ASM Heat Treat Booth #2016

Thermal Processing Equipment for the Production of Bearings and Gears.

**Reliable, flexible solutions
with repeatable results –
backed by an unmatched
reputation for quality.**

**Strength and Innovation
Since 1916.**



AFC-HOLCROFT

For further information please visit www.afc-holcroft.com

AFC-Holcroft USA · Michigan | AFC-Holcroft Europe · Switzerland | AFC-Holcroft Asia · China

Visit our heat treating experts in Booth #1723



Visit us at
Gear Expo 2013

**ASM
Heat Treating
Society**  **27th Conference
and Exposition**

Booth 1529

Ipsen

Visit us at ASM Booth #1529



A NEW DAWN IN HIGH PRESSURE GAS QUENCHING

20 BAR CARBURIZING OFFERS POWERFUL THERMAL PROCESSING FOR GEARS

Get fast, forceful gas cooling with Solar Manufacturing's new SSQ-IQ model vacuum furnace. With its high performance motor, you can produce turbulent, high velocity gas quenching for superior hardening at up to 20 bar pressure.

To view technical specifications and versatile options for the SSQ-IQ, Super Quench series visit:
www.solarmfg.com/20Bar

SOLAR
MANUFACTURING

*The Brightest Solutions
Through Ingenuity*

267-384-5040

PROUDLY MADE IN THE USA

Visit us at ASM Heat Treat Booth #1513

gear

TECHNOLOGY

CALL FOR PAPERS (live and in person!)

Do you have an idea for an article in Gear Technology?
 Stop by Gear Expo booth #1123 for a free consultation
 with our editors.

We'll help you transform your ideas into reality:

- Technical Articles
- Case Studies
- News
- Events

www.
geartechnology
 .com

If it's relevant to the gear
 industry, we want to cover it!

Visit us at
Booth #1123



Scanners ▢ Lift & Rotates
 Single Shot ▢ Tooth by Tooth
 Quality Monitoring Systems
 Used Equipment ▢ Development
 Inductor Design / Repair

INDUCTION HEATING SOLUTIONS

Ajax Tocco
 Magnethermic

www.ajaxtocco.com

Warren, OH USA 44483

+1-330-372-8611

24/7 Assistance +1-800-547-1527

Visit us at Heat Treat booth 1923

Visit us at ASM Booth #1923