

# Evaluation of Carburized & Ground Face Gears

Dr. David G. Lewicki, Dr. Robert Handschuh, Gregory F. Heath and Vijay Sheth

*This article was first presented at the 55th Annual Forum of the American Helicopter Society, May 25-29, 1999, in Montreal, Canada. Reprinted with the permission of AHS International—The Vertical Flight Society.*

*\* Editor's Note: Crown Gear B.V., the manufacturer of Cylkro® face gears, has been working with Kapp GmbH and Reishauer AG to develop grinding machines and technology capable of producing AGMA 13-14 quality Cylkro® gears for the aerospace and automotive industries and presented its first ground Cylkro® gear at Gear Expo in October 1999.*

## Introduction

Designers are constantly searching for ways to reduce rotorcraft drive system weight. Reduced weight can increase the payload, performance, or power density of current and future systems. One example of helicopter transmission weight reduction was initiated as part of the United States Army Advanced Rotorcraft Transmission program. This example used a split-torque, face-gear configuration concept (Ref. 1). Compared to a conventional design with spiral-bevel gears, the split-torque, face-gear design showed substantial weight savings benefits. Also, the use of face gears allows a wide range of possible configurations with technical and economic benefits (Ref. 2).

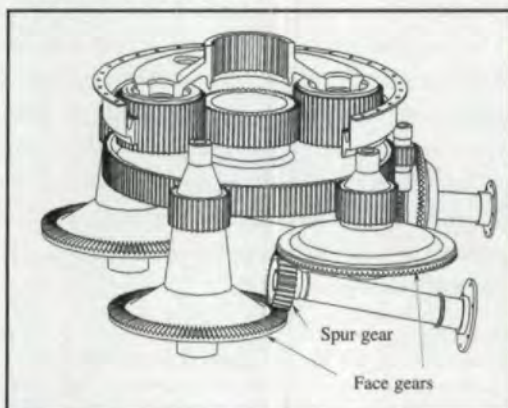


Fig. 1—Split-torque, face-gear transmission from the ART program (Ref. 1).

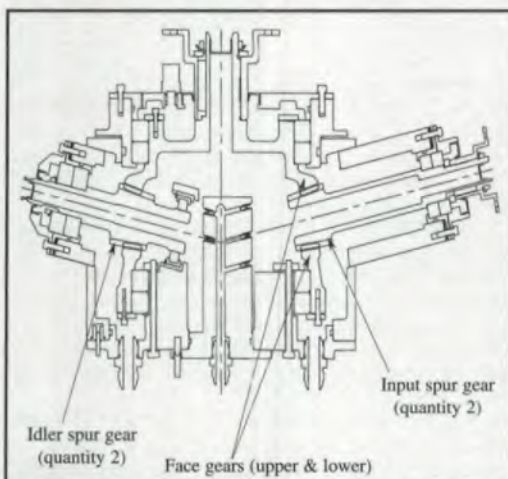


Fig. 2—Split-torque, face-gear transmission from the TRP program (Ref. 12).

Historically, face gears have been used to transfer light loads or angular motion between intersecting shafts (usually at right angles) such as in positioning mechanisms. Standards (Ref. 3) as well as examples of research contributions (Ref. 4) exist for this type of application. There is, however, a lack of experience with respect to design guidelines, allowable stress, and manufacturing capabilities for face-gear use in high-speed, high-load applications such as helicopter rotor drive systems. Recent studies have been performed to advance the analytical capabilities relating to face-gear design (Refs. 5-8). These studies considered face-gear geometry, size limitation factors, tooth contact analysis, kinematics and transmission error analysis. Experimental testing has also been performed to demonstrate the feasibility and investigate the failure modes of shaper-cut face gears (Refs. 9-10). These studies identified the need for face gears made from high-strength, carburized steels in order to obtain the required durability when subjected to a high-speed, high-load environment. When using carburized steels, there is a requirement to grind the gears to compensate for heat treatment distortion in order to obtain high-accuracy tooth geometry. However, there is currently no machine available that will grind face gears.\*

A new initiative has begun in Europe to investigate and advance the use of face gears in aerospace transmissions (Ref. 11). In the United States, a Defense Advanced Research Projects Agency (DARPA) Technology Reinvestment Program (TRP) was established to further enhance face-gear technology. The objective of the DARPA program is to develop a grinding procedure for face gears as well as design and demonstrate the proof-of-concept of a concentrically-arranged split-torque, face-gear transmission configuration (Ref. 12). A grinding procedure was developed based on a continuous grinding method using a worm grinding wheel. Prototype carburized and ground AISI 9310 steel face gears were fabricated as part of this program.



The objective of this work is to describe the preliminary results of the experimental tests performed on the carburized and ground AISI 9310 steel face gears. Face gears were tested in the NASA Glenn spiral-bevel-gear/face-gear facility. Basic face-gear design, test facility, setup procedures, testing procedures, and test results are described.

### Face Gear Applications in Helicopter Transmissions

Figure 1 shows the split-torque, face-gear transmission developed during the U.S. Army Advanced Rotorcraft Transmission (ART) program (Ref. 1). For this configuration, an involute spur gear, drives both an upper face gear and lower face gear. These face gears are connected to spur gears, which drive a large bull gear. By splitting the power flow in these two paths, smaller components can be utilized, which leads to reduced weight. Compared to spiral-bevel gears, face gears allow the use of a simpler, less expensive, involute spur pinion. In addition, the pinions do not produce axial forces and have less axial misalignment restrictions than spiral-bevel gears. It was estimated that a 40-percent weight reduction resulted from the split-torque, face-gear design compared to a conventional design. The conventional design weight used for comparison above was based on a parametric upscale of transmission design technology existing at that time. A design configuration which can be installed in existing aircraft much more readily than the preceding ART design is shown in Figure 2. This is a concentric, split-torque, face-gear design developed during the DARPA Technology Reinvestment Program (Ref. 12). This reduced-scale test gearbox will be used in proof-of-concept test evaluations. For this concept, an involute spur gear also drives a pair of face gears and the power flow is split in two. For the upper face gear, the power flow is direct from the input spur gear to the face gear. For the lower face gear, however, the power flow is from the input spur gear through the lower face gear, to an idler spur gear, and then the upper face gear. This configuration allows a large power capacity in a relatively small package. Assuming a full size production design, this concept has an estimated weight savings of 25-percent compared to a modern technology conventional design. These two examples show the potential benefits for the use of face gears in helicopter transmissions.

### Test Facility

The experiments reported in this article were performed in the NASA Glenn spiral-bevel-gear/face-gear test facility. An overview sketch of

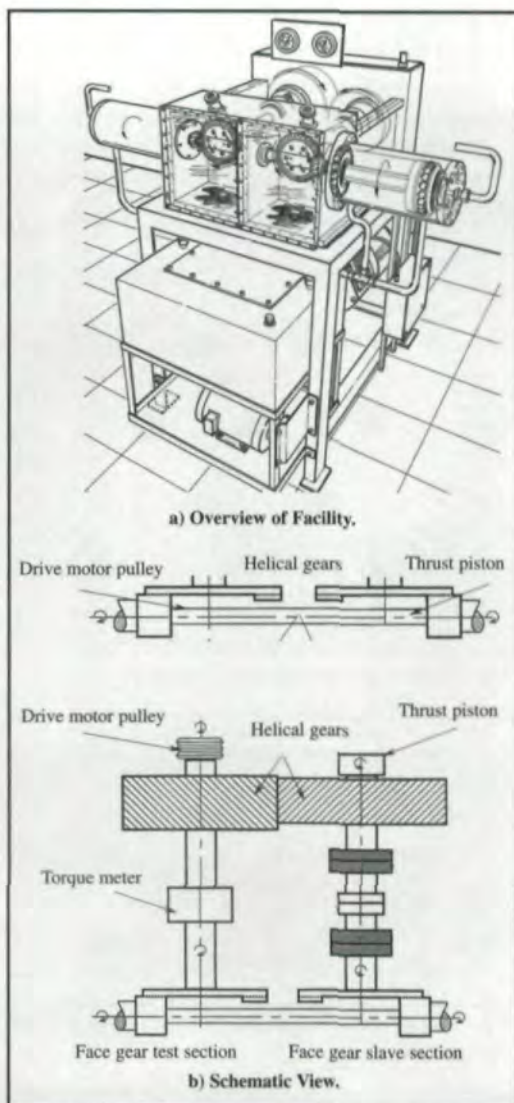


Fig. 3—NASA Glenn spiral-bevel-gear/face-gear test facility.

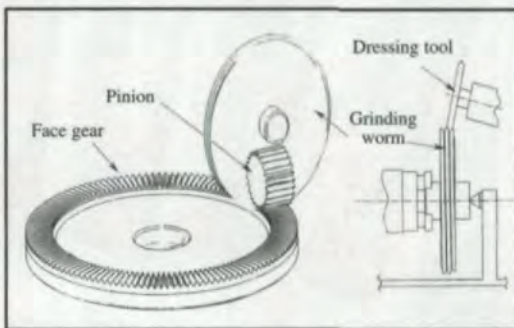


Fig. 4—Face-gear grinding setup.

the facility is shown in Figure 3a and a schematic of the power loop is shown in Figure 3b. The facility operates in a closed-loop arrangement. A spur pinion drives a face gear in the test (left) section. The face gear drives a set of helical gears, which in turn, drive a face gear and spur pinion in the slave (right) section. The pinions of the slave and test sections are connected by a cross shaft, thereby closing the loop. Torque is supplied in the loop by a thrust piston which exerts an axial force

**Dr. David G. Lewicki  
& Dr. Robert  
Handsuh**

are with the Vehicle  
Technology Directorate,  
U.S. Army Research  
Laboratory, NASA Glenn  
Research Center,  
Cleveland, OH.

**Gregory F. Heath  
& Vijay Sheth**

work for the Boeing  
Company, Mesa, AZ.



on one of the helical gears. A 75-kW (100-hp) DC drive motor, connected to the loop by V-belts and pulleys, controls the speed as well as provides power to overcome friction. The facility has the capability to operate at 560 kW (750 hp) and

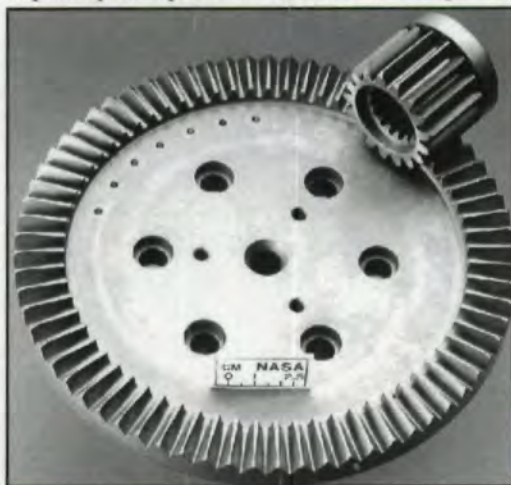


Fig. 5—Test spur pinion and face gear.

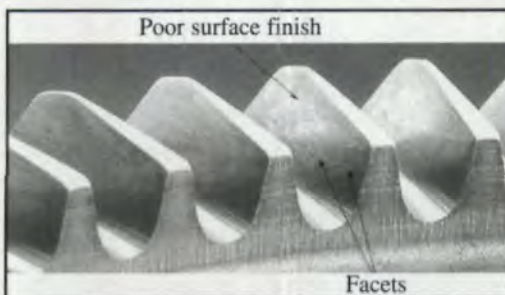


Fig. 6—Development problems with initial ground face gears.

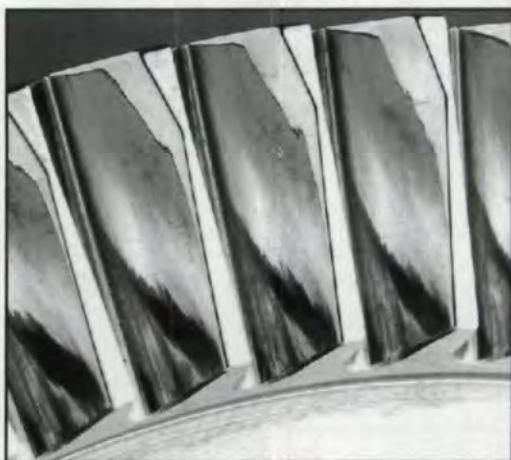
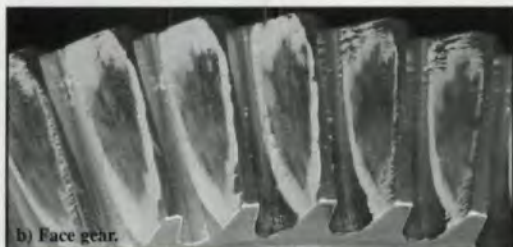


Fig. 7—Super-finished face gear.



a) Pinion.



b) Face gear.

Fig. 8—Typical tooth contact pattern checks from loaded static roll tests during installation.

20,000 rpm pinion speed. A torque meter in the loop measures torque and speed. The facility is also equipped with thermocouples, oil flow meters, pressure transducers, and accelerometers.

The gears and bearings of the facility are lubricated and cooled by a pressurized oil system. The lubricating fluid used was a synthetic base helicopter transmission oil conforming to the DOD-L-85734 specification. The test pinions and face gears were lubricated by jets which radially directed oil into the roots of the teeth on both the into-mesh and out-of-mesh sides. The nominal oil supply pressure was 552 KPa (80 psi) and the nominal flow rate was 2.6 l/min (0.7 gpm) for both the test section and slave section. Oil inlet temperature was set at 74° C (165° F). In addition, the oil system was equipped with a chip detector as well as a three-micron filter.

#### Face Gear Grinding Setup

The face gears used in the current tests were precision ground using a true generating method. The goal was to produce face gears having a quality of American Gear Manufacturers Association (AGMA) Class 12 or better. The method used employed a worm thread grinding wheel to generate the face gear teeth in a setup similar to that shown in Figure 4. The worm wheel rotational axis was located perpendicular to the face gear axis at an offset distance. During grinding, the worm rotated about its axis as it translated across the face gear teeth along a nearly radial line. The translation was at a small angle to the true radial line and related to the lead angle of the worm. The face gear work piece also rotated slowly during grinding so that all teeth were generated synchronously after multiple turns of the face gear as the grinding worm slowly translated inward. An effective method of redressing the grinding wheel (without tooth undercutting) during the above process was also developed.

The face gears were ground on a four-axis machine incorporating the basic setup described above. The first development gears experienced grinding burns as process parameters were being adjusted. Other difficulties included tooth facets and rough surface finishes. Eventually, face gears of AGMA Class 11 quality were made for the tests. The experience with the setup used validated the process but indicated that a better machine is required to obtain the gear quality needed. Deficiencies encountered included limited machine grinding speed, excessive machine deflections, and control-loop errors inherent in older vintage machines. The machine capability for making larger face gears (desired for aero-



space use) was limited as well. Current work is underway to develop a full CNC five-axis grinding machine for face gears.

### Test Gears

The design parameters for the pinions and face gears used in the tests are given in Table 1. A photograph of the test specimens is shown in Figure 5. This set was a hybrid between the ART program design and the TRP design. The set had a module of 2.54 mm (diametral pitch of 10 teeth/in) and a reduction ratio of 4.059:1. The face width of the face gears was 15.7 mm (0.620 in). The face width of the spur pinions was 32.6 mm (1.285 in). The shaft angle was 90° to accommodate the facility. The pinions were made from carburized and ground AISI 9310 steel using standard aerospace practices. The face gears were made from the same material and manufactured using the grinding procedure previously mentioned.

The 100-percent design torque for the face gears was defined as 377 N-m (3340 in-lb). This produced the same magnitude of contact stress as the face gears of the TRP concentric, split-torque transmission configuration at its 100-percent design load (Ref. 12). For the test gears, the calculated contact stress at 377 N-m torque was 1170 MPa (170 ksi) based on Hertz theory. The calculated pinion bending stress at 377 N-m torque was 210 MPa (30 ksi) based on standard AGMA calculations and using an effective face-gear face width. The allowable stresses stated in the table are those commonly accepted for AISI 9310 carburized and ground spur gears.

Due to the manufacturing problems previously mentioned, the face gears actually produced by the grinding procedure described above were not up to aerospace quality standards. The teeth had a relatively poor surface finish as well as faceted areas (Figure 6). In order to improve the surface finish, the teeth were subjected to a super-finish process (Ref. 13). In this process, the gears were immersed in a container of small zinc chips, water, and aluminum oxide powder. The container was vibrated for a number of hours and the grade of oxide powder was increased in fineness in several stages. Figure 7 shows a face gear after such a process. Although actual surface roughness measurements for the face gears tested were not available at the time, it was reported (Ref. 13) that a four- to six-times improvement in surface finish was achieved on those specific gears studied.

### Test Gear Installation Procedures

Although not as stringent as for spiral-bevel gears, proper pinion and face gear installation is crucial for successful operation. The installation

Table 1—Test Gear Design Data

AGMA quality; desired, achieved.....	12, 11
Number of teeth; pinion, face gear.....	17, 69
Module (mm).....	2.54
Pressure angle (deg).....	27.5
Shaft angle (deg).....	90
Face width (mm); pinion, face gear.....	32.6, 15.7
Hardness (Rc); pinion and face gear.....	58–62
RMS surface finish (μm).....	0.4
AGMA pinion bending stress (MPa); index, allowable.....	210, 450
AGMA contact stress (MPa); index, allowable.....	1170, 1380
Material.....	Carburized and ground AISI 9310

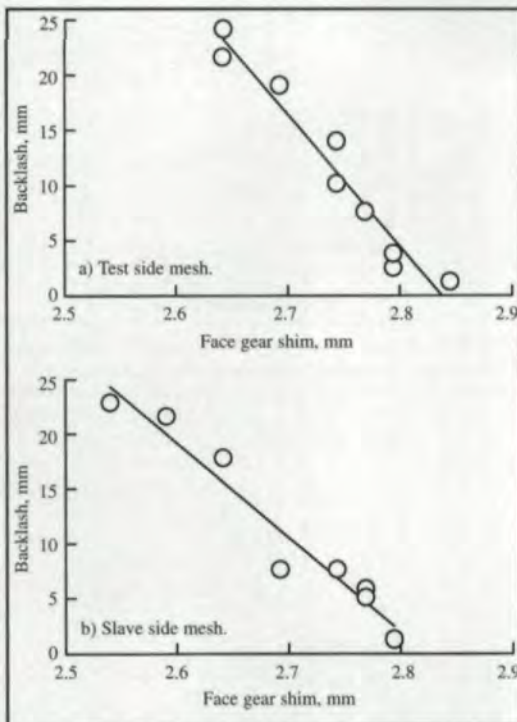


Fig. 9—Effect of face-gear shimming on tooth backlash.

procedure for the gears tested was as follows: First, the test-side pinion and face gear were installed in the facility (with no cross shaft connected to the pinion). The pinion was locked to ground and backlash measurements were taken for the mesh. A dial indicator was installed at the center of the face gear tooth, the face gear was manually rotated back and forth, and the backlash was recorded. After completion, marking compound was applied to the pinion and face gear teeth. No-load contact pattern checks were performed by manually rotating the pinion/face-gear assembly. If necessary, the shim located behind the face gear, which moves the face gear in the axial direction, was adjusted to achieve the proper backlash and contact pattern. This process was then repeated for the slave-side pinion/face-gear mesh. After proper shimming was achieved, the cross shaft was installed. Marking compound was then re-applied to all the pinions and gears and a loaded static roll test was performed. This was done by applying a moderate torque in the loop,



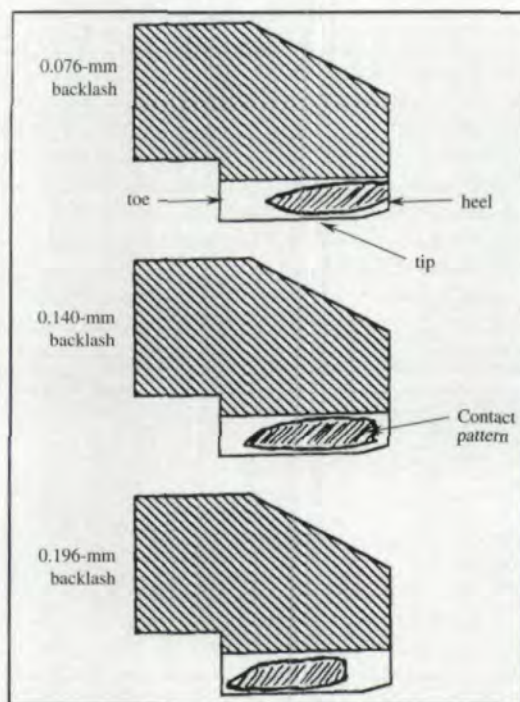


Fig. 10—Effect of face-gear shimming and backlash on tooth contact pattern (test side face gear).

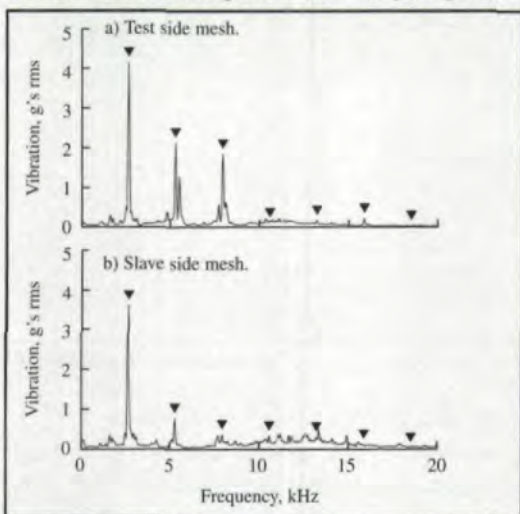


Fig. 11—Vibration spectrum at 10-million face-gear cycles at 424 N-m torque and 2300 rpm (triangles denote pinion/face-gear meshing and harmonic frequencies).

manually rotating the complete assembly and photographing the contact patterns. Figure 8 shows a typical example of a tooth contact pattern check for a loaded static roll test. Again, the objective of this procedure was to ensure the proper shimming to produce a tooth contact pattern that was centered on the pinion and face-gear teeth in order to avoid edge loading.

At the start of the project, the proper shim value to produce the required backlash and contact pattern was unclear. To gain experience, a study was conducted to determine the effect of shimming on backlash and contact pattern. Here, various shims were installed while backlash and pattern checks were measured for the test and

slave sections using the procedure described above. Figure 9 documents the effect of shimming on backlash. It should be noted that there was some variability in the backlash measurement. Overall, there appeared to be a linear relationship between shimming and backlash for the selected range presented. Figure 10 shows the effect of backlash on tooth contact pattern. The results depicted are for the test side, but a similar trend resulted for the slave side also. Note that the figure contains hand-drawn sketches of the contact pattern. The purpose is not to quantitatively define the required magnitude of backlash, but to show an important trend in the installation process. If the backlash is too loose (higher number), the tooth contact approaches the inner-diameter edge of the face gear, possibly leading to edge contact. If the backlash is too tight (lower number), the tooth contact approaches the outer-diameter edge of the face gear, again possibly leading to edge contact. In addition, the clearance between the pinion and face gear could be critically reduced when the gears reach operating temperature if the backlash is too tight. This could result in jamming, coast-side contact, or scoring failure. From the experience of the tests performed, backlash in the range of 0.178 to 0.254 mm (0.007 to 0.010 in) produced acceptable tooth contact patterns.

#### Test Procedure

A total of five endurance tests are reported in this work. The test operating conditions are listed in Table 2. The objective of the tests was to demonstrate that carburized and ground face gears would achieve the required durability when subjected to high-load helicopter transmission conditions. At the start of the project, extensive modal surveys of the test facility were conducted as well as speed sweeps with the test hardware installed. From these studies, a face gear speed of 2300 rpm was selected as the test condition to avoid any speeds that could contain facility-resonant dynamic loads. Test gear loads of 64, 76, 88, 100, and 112-percent design torque were run for ten-million face-gear cycles each. The same test-side face gear was used for all of the runs (serial number (S/N) 2-2). Similarly, the same slave-side face gear was used (S/N 2-4). These were carburized, ground, and super-finished face gears. Since the pinions accumulated over four times the number of cycles as the face gears, the pinions were replaced after each higher load condition to minimize the chance of a pinion failure causing face-gear tooth distress. Based on this, the pinions for both the test and slave sides were replaced after the 88- and 100-percent load tests. The original



Table 2—Test Operating Conditions.

Test No.	Face-gear speed (rpm)	Face-gear torque (N-m)	Pinion, million cyc	Face-gear, million cycs	Test section		Slave section	
					Pinion S/N	Face-gear S/N	Pinion S/N	Face-gear S/N
1	2300	242 (64%)	40.6	10.0	L5-12	2-2	L5-5	2-4
2	2300	287 (76%)	40.6	10.0	L5-12	2-2	L5-5	2-4
3	2300	332 (88%)	40.6	10.0	L5-12	2-2	L5-5	2-4
4	2300	377 (100%)	40.6	10.0	L5-11	2-2	L5-9	2-4
5	2300	424 (112%)	40.6	10.0	1	2-2	2	2-4

pinions (S/N's L5-12 and L5-5) were carburized, ground, and super-finished, while the subsequent ones used were only carburized and ground.

At the start of each test, the gears were installed as discussed in the previous section. They were then run for a break-in period, which consisted of a gradual increase in speed and torque. After the break-in, the gears were visually inspected then run per the specified test condition. Facility parameters such as speed, torque, oil flow, oil pressure, temperatures, and vibration were monitored throughout the test. After completion of ten million face-gear cycles, the gears were removed from the rig, inspected (visual and magnetic particle), and photographed.

### Results and Discussion

Figure 11 shows typical vibration spectrums from the tests. The spectrums were produced from high-frequency piezoelectric accelerometers mounted on top of the pinion housings near the pinion/face-gear meshes. One was mounted on the test side and one on the slave side. The accelerometers had integral electronics, a typical sensitivity of 10 mV/g, and a resonance frequency of 90 kHz. From the spectrum, the major sources of vibration were from the pinion/face-gear fundamental meshing and harmonic frequencies.

Figure 12 gives the maximum vibration as a function of run time for all the tests. The maximum vibration is defined as the maximum value of the spectrum, and usually occurred at the pinion/face-gear fundamental meshing frequency. Note that the vibration was rather sporadic during the tests. This is not uncommon for vibration of high-speed machinery. Also, there appeared to be no definite trend of vibration with torque. This is consistent with previous studies performed on helicopter transmissions (Refs. 14, 15). From Figure 12b, a significant reduction in vibration for the slave side occurred at 20 million cycles. This was probably due to the replacement of a failed pinion shaft support bearing at the end of Test 2. Also, significant changes in vibration occurred at 30 and 40 million cycles for both the test and slave sides (Figures 12a and 12b), probably due to the replacement of pinions for Tests 4 and 5.

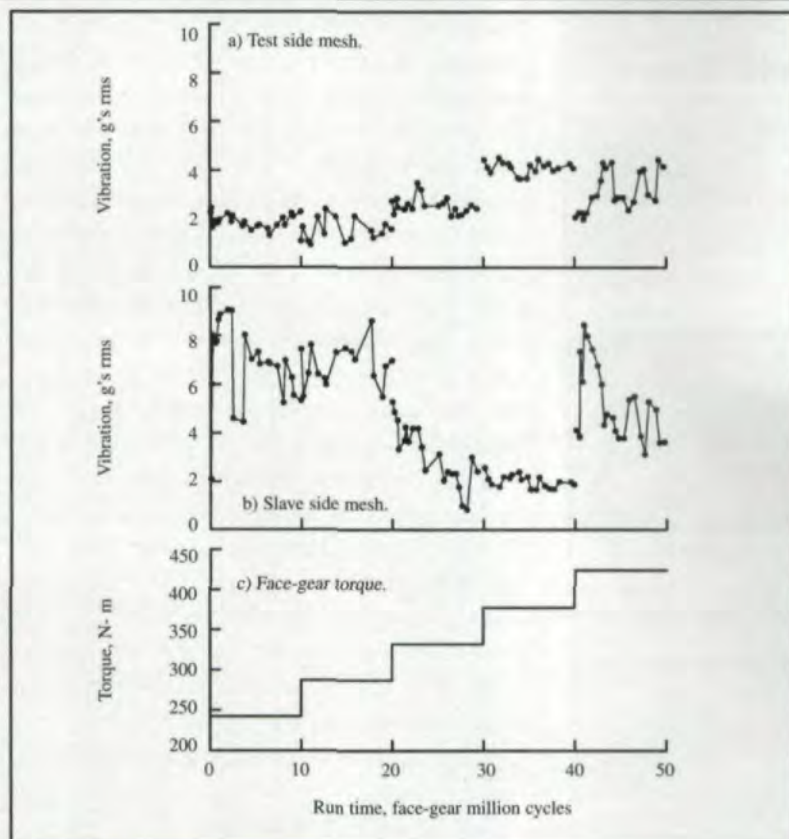


Fig. 12—Maximum vibration of spectrum as a function of run time.

At the end of Tests 1 and 2 (242 N-m, 64-percent design torque, and 287 N-m, 76-percent design torque, respectively), there was no noticeable wear on any of the spur pinions or face gears. At the end of Test 3 (332 N-m, 88-percent), the pinions had very light wear but the face gears exhibited no noticeable wear. The pinion teeth on the slave side had wear lines where the pinion meshed with the face-gear outer-diameter region. This was possibly caused by debris from the pinion shaft support bearing failure.

At the end of Test 4, the replacement pinions had a slight increase in the amount of wear compared to the pinions from Test 3. Concentrated wear on the pinion teeth was noticed as diagonal lines on the teeth corresponding to the location of the pitch line. The face gears, however, had less noticeable wear than the pinions. Slight wear lines were noticed that appeared to correspond with the edges of the facets on the teeth.

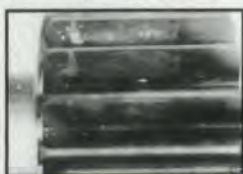




a) Pinion, test side.



b) Face gear, test side.



c) Pinion, slave side.



d) Face gear, slave side.

**Fig. 13—Pinion and face gear teeth after Test 5 (424 N-m, 112-percent design torque).**


At the end of Test 5 (424 N-m, 112-percent), the replacement pinions had again a slight increase in the amount of wear compared to the pinions from Test 4. This was expected due to the increased applied load. Slight wear lines were apparent near the pitch line as well as edge lines where the pinion meshed with the face-gear inner-diameter and outer-diameter regions. The marks corresponding to the face gear outer-diameter region were attributed to a few burrs on the face-gear outer-diameter edge, probably caused during hardware assembly. Slight scratching appeared at the tooth tips. Overall, however, relatively little wear was noticed. The face gears had even less noticeable wear than the pinions. As stated before, slight wear lines were noticed that appeared to correspond with the edge of the facets on the teeth. At this time, the effect of the facets on durability and performance are not known. Also, minor scratching was exhibited on the face gears near the outer-diameter tip region. Figure 13 depicts the wear after Test 5. Aside from minor wear line situations, the pinions and, especially the face gears, had no significant wear problems or failure modes. (Note that the wear of the pinions in Figure 13 is just the removal of the black-oxide.) Thus, from the tests, the carburized and ground face gears demonstrated the required durability when subjected to up to 112-percent design torque. Further tests are planned to increase the applied torque and determine the load capacity of the face gears.

### Conclusions

Experimental durability tests were performed on carburized and ground AISI 9310 steel face gears. The tests were conducted in the NASA Glenn spiral-bevel-gear/face-gear test facility. Tests were run at 2300 rpm face gear speed and at loads of 64, 76, 88, 100, and 112-percent of the design torque of 377 N-m (3340 in-lb) at ten million face-gear cycles each. The following conclusions were made:

- 1) Carburized and ground face gears demonstrated the required durability when run for ten million cycles at loads of 64, 76, 88, 100, and 112-percent of the design torque. Other than wear lines caused by isolated situations, the spur pinions and face gears had no significant wear problems or failure modes.
- 2) Proper installation was critical for the successful operation of the spur pinions and face gears. Backlash that was too high produced tooth contact patterns that approached the inner-diameter edge of the face-gear tooth. Backlash that was too low produced tooth contact patterns that approached

the outer-diameter edge of the face-gear tooth. Measured backlashes in the range of 0.178 to 0.254 mm (0.007 to 0.010 in) produced acceptable tooth contact patterns.

- 3) From spectrum readings taken during the tests, the major source of vibration was from the pinion/face-gear fundamental meshing frequency and harmonics. Also, there was no definite trend of vibration with torque. 

### References

1. Heath, G.F., and R.B. Bossler, "Advanced Rotorcraft Transmission (ART) Program - Final Report," NASA CR-191057, Army Research Laboratory ARL-CR-14, January 1993.
2. Grendal, H.F., "Cylkro Gears: An Alternative in Mechanical Power Transmission," *Gear Technology*, Vol. 13, (3), May-June 1996, pp. 26-31.
3. AGMA, "Fine-Pitch On-Center Face Gears for 20-Degree Involute Spur Pinions," AGMA 203.03, April 1973.
4. Chakraborty, J., and B.S. Bhadoria, "Surface Durability Ratings for On-Center and Off-Center Spur Face Gears," ASME 75-PTG-4, Joint ASLE-ASME Lubrication Conference, Miami Beach, FL, October 1975.
5. Litvin, F.L., et al., "Design and Geometry of Face-Gear Drives," ASME Journal of Mechanical Design, Vol. 114, (4), December 1992, pp. 642-647.
6. Litvin, F.L., et al., "Application of Face-Gear Drives in Helicopter Transmissions," ASME Journal of Mechanical Design, Vol. 116, (3), September 1994, pp. 672-676.
7. Toma, C., and D. Play, "Design of Face Gears: Manufacturing Simulation and Mechanical Behaviour," 7th International Power Transmission and Gearing Conference, San Diego, CA, October 1996, pp. 687-692.
8. Zhang, Y., and Z. Wu, "Offset Face Gear Drives: Tooth Geometry and Contact Analysis," ASME Journal of Mechanical Design, Vol. 119, (1), September 1997, pp. 114-119.
9. Handschuh, R.F., D.G. Lewicki, R. Bossler, "Experimental Testing of Prototype Face Gears for Helicopter Transmissions," *Journal of Aerospace Engineering, Proceedings of the Institute of Mechanical Engineers*, Vol. 208, (G2), October 1994, pp. 129-135.
10. Handschuh, R.F., D.G. Lewicki, G.F. Heath and R.B. Bossler, "Experimental Evaluation of Face Gears for Aerospace Drive System Applications," 7th International Power Transmission and Gearing Conference, San Diego, CA, October 1996, pp. 581-588.
11. Caruso, A., et al., "The Brite-Euram FACET Programme on Face Gears in Aerospace Transmissions," *Aerospace Transmission Technology Into the 21st Century*, Cascina Costa, Italy, October 1998.
12. Chen, D., and R.B. Bossler, "Design, Analysis, and Testing Methods for a Split-Torque Face-Gear Transmission," 31st AIAA/SAE/ASME Joint Propulsion Conference, San Diego, CA, July 1995.
13. Snidle, R.W., H.P. Evans and M.P. Alanou, "The Effect of Superfinishing on Gear Tooth Profile [Final Report]," *Army Research Development and Standardization Group Report AD-A327916*, June 1997.
14. Lewicki, D.G., and J.J. Coy, "Vibration Characteristics of OH-58A Helicopter Main Rotor Transmission," NASA TP-2705, AVSCOM TR-86-C-42, April 1987.
15. Lewicki, D.G., R.F. Handschuh, Z.S. Henry and F.L. Litvin, "Low-Noise, High-Strength, Spiral-Bevel Gears for Helicopter Transmissions," *AIAA Journal of Propulsion and Power*, Vol. 10, (3), May-June 1994, pp. 356-361.

### Tell Us What You Think ...

If you found this article of interest and/or useful, please **circle 206**.

If you did not care for this article, **circle 207**.

If you would like to respond to this or any other article in this edition of *Gear Technology*, please fax your response to the attention of Charles Cooper, senior editor, at 847-437-6618.