

# Showstoppers!

Our special advertising section features the exhibitors you won't want to miss at

## Gear Expo and ASM Heat Treat 2013.

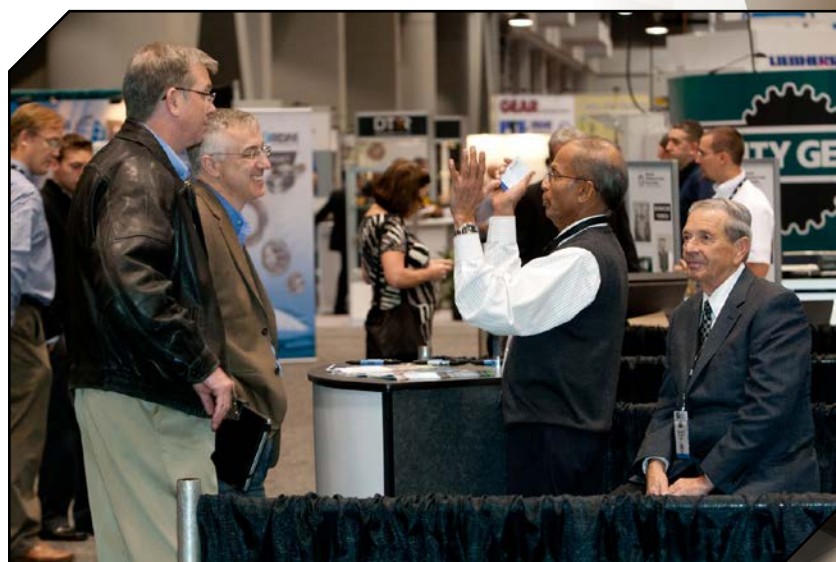
Gear Expo

September 17-19

ASM Heat Treating Society Conference and Exposition

September 16-18

Indiana Convention Center, Indianapolis







**oelhheld**  
innovative fluid technology

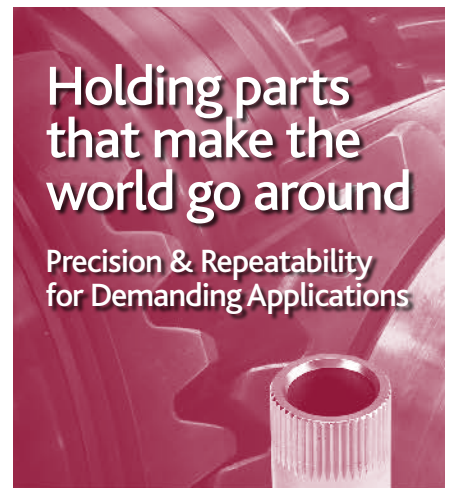
**Innovative  
grinding fluids...**

**...to get your  
production into gear.**



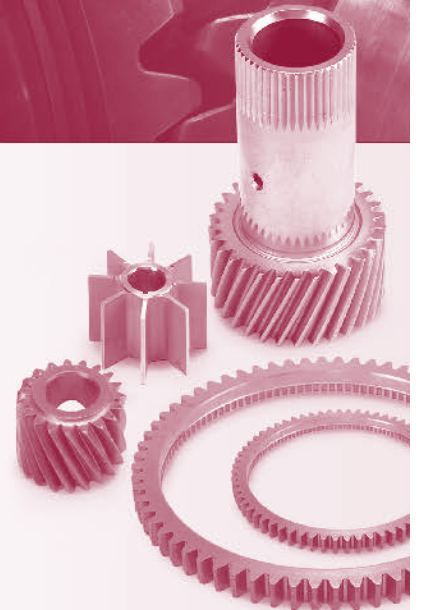
oelhheld U.S., Inc. • 1760 Britannia Drive, Unit 1 • Elgin, Illinois 60124  
phone: +1-(847)-531-8501 • fax: +1-(847)-531-8511  
E-Mail: hutec-us@oelhheld.com • web: www.oelhheld.com

**Visit us at Booth #767**



**Holding parts  
that make the  
world go around**

**Precision & Repeatability  
for Demanding Applications**



**At Hydra-Lock**, we continue to develop our workholding technologies, engineering industry's best chucks and arbors while providing application support to meet the increasing demands of industries like gear manufacturing. Among our many innovations are solid- and split- steel expanding sleeve designs, and the Conform-A® technology – all geared to ensure reliability and quality for your I.D. and O.D. applications.



Originators and developers  
of Hydraulic Chucking

**HYDRA-LOCK**  
CORPORATION

[www.hydralock.com](http://www.hydralock.com)

**Visit us at Booth #640**




# GEARKING

*Precision Gears*



*Visit us at Booth 719!*  
Sept 17-19 at the 2013 Gear Expo

[www.gearing.com](http://www.gearing.com)

tel: 949-579-2789

[info@gearing.com](mailto:info@gearing.com)

**Visit us at Booth #719**





NTX2000

## It's time to shift gears—by combining complex machining processes on standard machines.

Revolutionary gear-milling solutions from DMG / MORI SEIKI USA enable all types of gear machining with innovative milling programs and off-the-shelf tooling—so you can slash setup times and boost profit.



[www.dmgmorseikiusa.com](http://www.dmgmorseikiusa.com) | 855-364-6674  
SEE THE LATEST GEAR-MILLING SOLUTIONS AT BOOTH 631



Visit us at Booth #631



## Specta-GEAR-lar Workholding



Changing over from O.D. clamping to I.D. clamping without disassembling the base clamping device is done in a matter of 2 minutes with the HAINBUCH modular system. With MANDO Adapt, just place the mandrel in the mounted clamping device. It's a great time-savings solution, not to mention that MANDO Adapt is extremely rigid and precise.

Visit booth #600 for more information.

1.800.281.5734  
Germantown, WI USA  
[www.hainbuchamerica.com](http://www.hainbuchamerica.com)

 **America**  
**HAINBUCH**  
WORKHOLDING TECHNOLOGY

Visit us at Booth #600

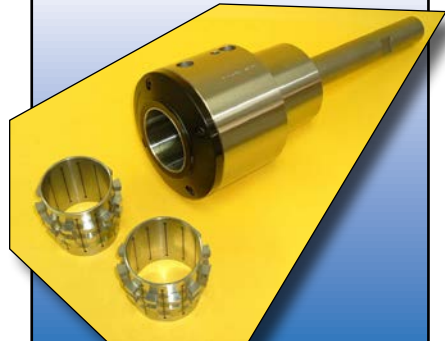
## GEAR RESOURCE TECHNOLOGIES



## GEAR TOOLING SPECIALISTS SINCE 1997



## CYLINDRICAL + BEVEL ALL PROCESSES



[www.gear-resource.com](http://www.gear-resource.com)  
**585.383.9160**

Visit us at Booth #750



**Kashifuji**

100th Anniversary  
GEAR HOBBING



GEAR HONES



GEAR INSPECTION

Celebrate with us at  
**BOOTH 1240**

Tel +1.586.677.3910 Fax +1.586.677.3912 • sales@involutegearmachine.com  
51200 Milano Drive, Suite D • Macomb, Michigan 48042 USA

Visit us at Booth #1240



Solutions for  
all your gear  
cutting tool  
needs

www.star-su.com



SAMPUTENSILI

BOURN  
& KOCH



Visit us at Booth #901



# Motion, Drive & Automation

NORTH AMERICA

International Trade  
Show for Motion  
Control, Power  
Transmission and  
Fluid Technology

September 8-13, 2014  
McCormick Place  
Chicago, IL

MDA  
NORTH AMERICA

at



Visit us at Gear Expo  
at Booth #1162

For more information, please  
contact Aryan Zandieh at  
(312) 805-8740 or  
azandieh@dhfusa.com

motiondriveautomation.com

Visit us at Booth #1162

## New Value for Small Gear Measurement



Wenzel GearTec presents the new WGT 280, the first model in a new generation of gear measuring machines with a new industrial design. The WGT 280 extends the innovative WGT series with a measuring machine especially designed for small gears and rotationally symmetrical parts.

- The high precision rotary table can be loaded with parts weighting up to 50 kg.
- Equipped with the Renishaw SP 600 standard.
- Allows for measurements in a Z range of up to 500 mm.
- Can be equipped with a tail stock for the accurate measurement of shafts.

For more information visit Liebherr Gear Technology, Inc. at Booth 510 or contact them at:

# LIEBHERR

Liebherr Gear Technology, Inc.  
1465 Woodland Dr. Saline, MI 48176  
734.944.6314 www.liebherr.us

Supplying the Best Value in

CMM



Gear Inspection



3D Imaging



# WENZEL®



find us on  
facebook

28700 Beck Rd. Wixom, Michigan 48393 Ph: 248.295.4300 www.wenzelamerica.com



Visit us at Booth #510

## Broadway Gear

### Focus on fine module gears for 44 years

Broadway Gear combines the capabilities of one of China's largest gear manufacturers with the dedicated service of a Texas based sales office to meet your precision gearing needs.

- Custom Gears
- Custom Gearboxes
- Miniature Gearboxes
- Planetary Gearboxes

Assure quality and delivery on time with certifications.

AS9100 REV.  
C:2009 + ISO9001:2008

ISO/TS 16949:2009  
Certificate by TÜV SÜD

ISO 9001-2000  
Certification



## Broadway Gear Inc.

info@broadwaygear.com  
www.broadwaygear.com

4911 Olsen Drive • Dallas, TX 75227  
Phone: 972-351-8737 • Fax: 972-268-9920

Visit us at Booth #914

# SELL MORE GEARS

## ADVERTISE IN Power Transmission Engineering

to reach buyers of gears, gear drives and mechanical power transmission components.



www.powertransmission.com

Call Dave Friedman at  
(847) 437-6604 or e-mail  
dave@  
powertransmission.com  
for more information.

Visit us at Booth #1123



**BOHLE MACHINE TOOLS, INC.**  
PLYMOUTH, MICHIGAN  
WHEN YOU NEED SOMETHING BETTER

Finest German machine tool companies

Hard turning, grinding, milling and honing

Bearings, gears, shafts, worm gears and shafts, etc.

Service and spare parts supply directly from the US



Hard machining  
of axially  
symmetrical parts



High-Speed  
Honing



Lateral surface  
grinding machines



Milling-Turning-  
Grinding Center  
for complete machining



Visit [www.bmtbohle.com](http://www.bmtbohle.com) or call us at 734-414-8220

Meet us at Booth #1152 to see the full range of our products

## More than custom gears... Engineered drive solutions.

We have been manufacturing custom gears and drives for more than 90 years. We have over 100 engineers on staff worldwide engaged in design and testing, and our North American manufacturing facility encompasses 600,000 square feet of advanced machine tools with extensive heat treatment. We have the expertise and scale to handle your largest programs. Rely on us to develop your custom engineered gears, components and complete driveline solutions.

Oerlikon Drive Systems

**oerlikon** | **oerlikon**  
fairfield | graziano

### AMERICAS

U.S. 52 South / P.O. Box 7940  
Lafayette, Indiana 47903

765.772.4000

[www.oerlikon.com/drivesystems](http://www.oerlikon.com/drivesystems)

Visit us at Booth #1117

## SELL MORE GEAR DRIVES

ADVERTISE IN  
**Power Transmission  
Engineering**

to reach buyers of  
gears, gear drives  
and mechanical  
power transmission  
components.

### Power Transmission Engineering

PREDICTIVE  
BEARING  
FAILURE  
BREAKTHROUGH?

SKF INSIGHT: Intelligent  
Bearing  
Technology

BEARING ASSOCIATIONS—  
STRENGTH IN NUMBERS

SIMULATION SOFTWARE

Technical  
[New Applications for CRBs]  
[DC Motor Protection]  
[New Gas-Carburized Steel  
Boosts Gear Performance]

Power Play  
GoldieBlox

[www.powertransmission.com](http://www.powertransmission.com)

[www.powertransmission.com](http://www.powertransmission.com)

Call Dave Friedman at  
(847) 437-6604 or e-mail  
**dave@**  
**powertransmission.com**  
for more information.

Visit us at Booth #1123



Gleason

THE  
**TOTAL GEAR SOLUTIONS™**  
PROVIDER

GLEASON

**POWER  
SKIVING™ ...****UP TO 8 TIMES  
FASTER THAN  
SHAPING***Experience the Gleason Difference, Booth #423.***Gleason****Visit us at Booth #423***Solutions to drive business & sustainability***RomaxDESIGNER**

The ultimate solution for any gearbox, transmission & driveline design project, from planning to manufacturing. The core of a seamlessly integrated tool chain.

**CONCEPT**

Accelerate time to market & improve product quality with integrated conceptual design software.

**CAD  
FUSION**

Enhance the power of **RomaxDESIGNER** & **CONCEPT**; seamless integration with CAD tools for improved work flow efficiency & enhanced product development.

**Dynamic  
FUSION**

Reduce multibody model development time by extracting complex, user selectable geartrain information directly from **RomaxDESIGNER**.

**Romax  
TECHNOLOGY**

**w:** [www.romaxtech.com](http://www.romaxtech.com)  
**e:** [sales@romaxtech.com](mailto:sales@romaxtech.com)

Visit us at booth #607

**Visit us at Booth #607****Drinks  
Are  
On Us****Free Cappuccino****Free Espresso****Free Latte**

Kick up your feet and  
join us at Gear Expo

**gear**  
TECHNOLOGY**EXHIBITOR  
Booth #1123****Visit us at Booth #1123**



# EXCEL GEAR, INC.

GEARS 1"-60" - AGMA 15

The **EXCEL** promise;  
*We'll excel where others fall short.*



- Complete gear design, manufacturing and reverse engineering services
- Gear hobbing & grinding from 1"-60" (To AGMA 15)
- Internal gear grinding from 10"-60"
- Gear shaping to 36" diameter (9" face width)
- Wind turbine gear boxes, high speed spindles, gimbal heads and gear boxes
- Competitive prices and quality gear design and manufacturing with delivery commitments you can count on!

**A TOTAL SERVICE COMPANY**  
ISO9001-2008 APPROVED

**815-623-3414**

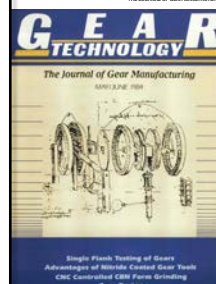
quotations@ExcelGear.com

**www.ExcelGear.com**



Visit us at Booth #1148

# 30 YEARS OF gear TECHNOLOGY



www.geartechology.com

Visit us at Booth #1123

**VITRIUM**

**REVOLUTIONARY BOND TECHNOLOGY**

NEW GENERATION,  
PATENT-PENDING BOND SCIENCE.

## RESHAPING THE WORLD OF PRECISION GRINDING

COOL CUTTING | PRECISE PROFILE | HIGH SPEED

GEAR AEROSPACE BEARING AUTOMOTIVE ENERGY

© Saint-Gobain Abrasives, Inc. 2013

Visit us at Booth #1153



## Automated Nondestructive Evaluation of Grinding Damage and Heat Treatment



**american stress technologies**  
...a member of the Stresstech Group of companies...

For more information about our products and services, you can visit us at:  
[www.astresstech.com](http://www.astresstech.com) or call us at: 412-784-8400

Visit us at Booth #306

# Renew Your Vows

Say "I Do" to another year of the finest technical publication in the gear industry. Why not stop by **Booth #1123** and update your subscription?

Print and Digital Subscriptions Available

Sign up for Product Alerts and E-Newsletters

*Did we mention it's free?*

**gear**  
TECHNOLOGY

Visit us at  
**Booth #1123**

Visit us at Booth #1123



THE NEW EMAG VL-MACHINES

**Maximum Performance Guaranteed**

Visit us at Booth #315

# Reliability in Motion!



**STRONGER**  
in Bevel Gear Machining

**BETTER**  
in Bevel and Cylindrical  
'Blanks' Machining

**FASTER**  
in Parallel Axis Gears

*With fast-expanding production capabilities, we're a company on the move.  
Find out more at:*

Booth #858  
**GEAREXPO**  
2013

**Reliance Gear**  
*Reliability in Motion*

[reliancegear.com](http://reliancegear.com)

Visit us at Booth #858

## High Precision Gears for Demanding Applications



**GEAREXPO**  
2013  
See us at Booth #923



Visit us at Booth #923

## Gear and Gear Drive Marketing

# 101

Sponsored by

**Power Transmission  
Engineering**

**A**ttend our free breakfast seminar to learn more about marketing your gears and gear drive products. Learn how to build brand identity and make use of the latest tools from Power Transmission Engineering, the magazine for gear buyers.

When  
**Wednesday, September 18<sup>th</sup>**  
8:15 am

All attendees receive a free gift, and one lucky attendee wins a complete advertising program valued at \$10,000

Reservation and admission ticket required for early entrance to show floor

RSVP – [dave@powertransmission.com](mailto:dave@powertransmission.com)  
or (847) 437-6604

## Visit us at Booth #1123

Visit us at Booth #1123



# BeaverMatic

- Manufacturer of performance proven heat treating equipment for fifty years

- World's largest Internal Quench Furnace with 15,000 pound workload for large gears

52" O.D. /  
4,200 lb. gear  
processed in a  
BeaverMatic  
Box Furnace

**815.963.0005**

Fax: 815.963.5673

**BEAVERMATIC, Inc.**

**www.beavermatic.com**

E-mail: sales@beavermatic.com

Visit us at ASM Heat Treat Booth #2016

## Thermal Processing Equipment for the Production of Bearings and Gears.

**Reliable, flexible solutions  
with repeatable results –  
backed by an unmatched  
reputation for quality.**

**Strength and Innovation  
Since 1916.**



**AFC-HOLCROFT**

For further information please visit [www.afc-holcroft.com](http://www.afc-holcroft.com)

AFC-Holcroft USA · Michigan | AFC-Holcroft Europe · Switzerland | AFC-Holcroft Asia · China

Visit our heat treating experts in Booth #1723



Visit us at  
Gear Expo 2013

**ASM  
Heat Treating  
Society**  **27th Conference  
and Exposition**

Booth 1529

**Ipsen**

Visit us at ASM Booth #1529