

# *ashiyana*

Residency

## Saptarishi Park



AVAILABLE IN 2/3 BEDROOMS  
**3 Blocks(G+9); 153 Flats.**

**We deliver quality within affordability**





### About:- Unique Procon Pvt. Ltd.

Unique Procon Pvt. Ltd. Steered By Young, Energetic and Experienced Professionals. We Always Believe In Quality, Commitment And Transparency. Our Motto Is To Design And Develop The Quality And Comfortable Home At Affordable Price At Convenient Location.

### “Ashiyana”

Build On Pillars Of Trust, Transparency And In Tune To The Environment. It Is Located At A Place That Will Ensure That You Live In An Ideal Environment That Gives You A Break From The Hustles And Bustles Of The Fast City Life. Whereas It Gives You A Natural And Peaceful Stay Close To The Mother Earth, It Also Ensures That All The Basic Means Of Transport That Connects You To The City, Schools, Colleges, Hospitals And Markets Are In Minutes Reach That Guarantees A Hassle Free But Peaceful Living.

After Successful Completion Of “Ashiyana Society” We Are Bringing Our New Project At “**Saptarishi Park**”, Bidhannagar “Ashiyana Residency” A Project Of 3 G+9 Buildings To Reside 153 Families.

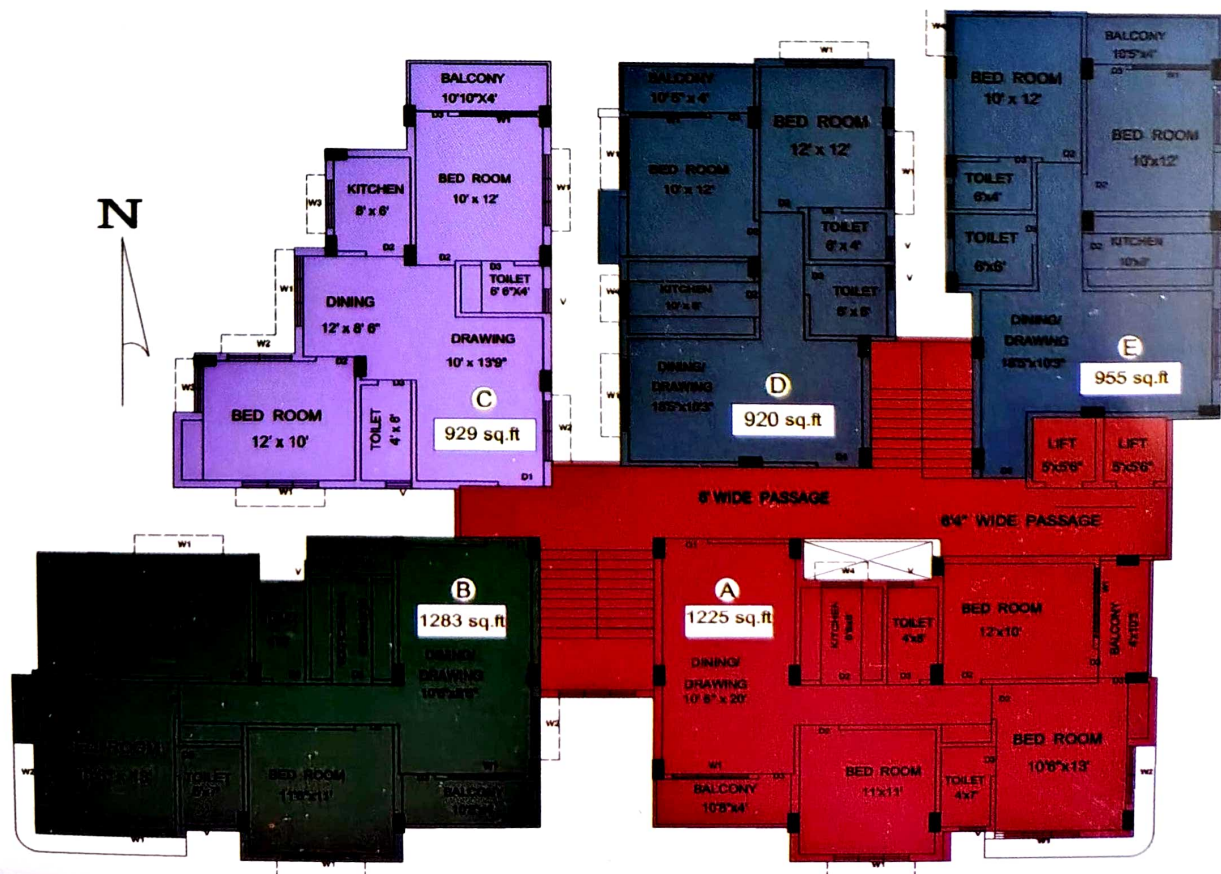
*We deliver quality within affordability*





A.R.- 1

Flat	Type	Area/sqft
A	3BHK	1225
B	3BHK	1283
C	2BHK	929
D	2BHK	920
E	2BHK	955







Flat	Type	Area/sqft
A	2-BHK	959
B	2-BHK	959
C	3-BHK	1255
D	2-BHK	981
E	2-BHK	1013
F	2-BHK	966





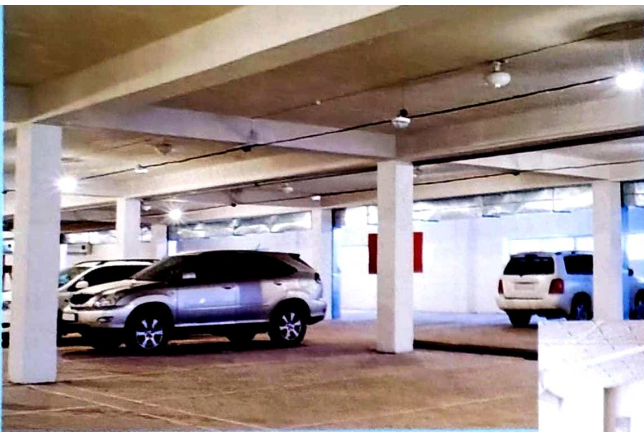


A.R.- 3

Flat	Type	Area/sqft
A	3-BHK	1318
B	2-BHK	908
C	3-BHK	1173
D	3-BHK	1244
E	2-BHK	886
F	2-BHK	910







## AMENITIES

Earthquake Resistant Structure

Children's Play Area

Lightening Arrester

24 hrs. Generator Backup

Intercom Facility

Cable Point

★ Community Hall / Club / Gym

Round the Clock Security

Lift (High Speed, Branded)





## SPECIFICATION

### **External Structure :**

RCC Framed Structure.

### **Wall Finish Interior :**

Conventional Brickwork with Cement putty.

### **Flooring :**

Ceramic Tiles/Marble - All Bedrooms & Living Rooms.

### **Doors & Windows :**

Doors - Laminated Flush door, Door Fittings - Godrej or equivalent (night latch, eyepiece and lock handles.)

### **Electrical Fittings :**

A.C Points in One Bedrooms, Cable, TV and Intercom Points. Ample necessary 15 amp & 5 amp electrical points. Concealed Copper Wiring with Central MCB/ RCB of reputed make. Door Bell point at the main entrance. Modular Switches.

### **Kitchen :**

Heavy Duty/anti skid ceramic tiles on Floor. Granite platform & stainless steel sink. Dado upto 2 ft. above the counter/platform. Electric Point for refrigerator, water purifier, exhaust fan etc. + extra 15 Amps.

### **Toilet :**

White / Coloured sanitary ware of reputed make Heavy duty/anti skid ceramic tiles on floor. Glazed ceramic tiles on the walls upto 7 ft. height. CP Fittings of reputed make. Electric point for geyser and exhaust fan. Hot & cold water (in 1 toilet)

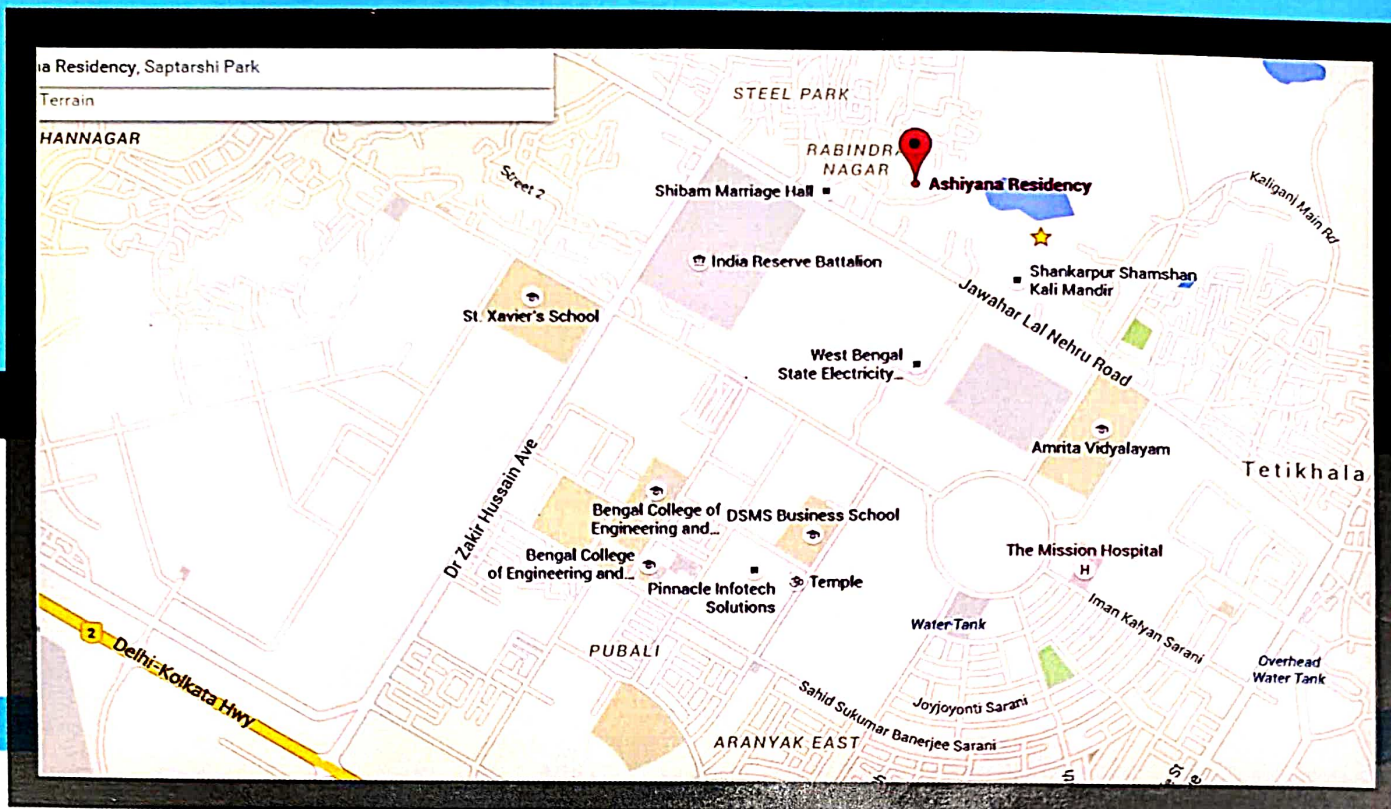
### **Elevation :**

Modern Aesthetic Elevation to be finished with weather proof suitable paint.

### **Staircase & Lobby :**

Marble/Kota stone in stairs and in each lobby and S.S. Railing.





New Market, Rabindra Nagar  
Shankarpur (W), Durgapur - 713206  
E-mail : unique.dgp06@gmail.com

For Enquiry **8820333111**