

National Library

Financial report and key indicators 2025

Financial report and key indicators

Ministry of Education and Culture's core funding for the National Library's national duties totalled €22.8 million, an increase of €1.5 million (7.2%) from the previous year. 28% of the €8.2 million in supplementary funding awarded to the National Library of Finland was also from the Ministry of Education and Culture.

The total income and expenditures of the National Library of Finland are shown in tables A and B. In addition to the source of funding, the largest projects funded are listed.

Salary costs totalled €15.1 million, of which core funding salaries totalled €10.8 million. The salary costs from core funding increased by 2%. The National Library of Finland paid €6.6 million in facility rent, which was taken from the core funding granted by the Ministry of Education and Culture. The increase in rent from the previous year was 3.6%. A total of €3.7 million was spent on the procurement of library materials, of which €3.2 million was spent on the centralised acquisition of FinELib (Finnish Electronic Library) materials. Fee-based services are included in external funding.

The National Library's basic funding result shows €0.5 million in profit. The profit was €0.7 million higher than budgeted. The total of expenses and costs of externally funded projects was close to zero. A breakdown of the economic results of the Library can be found in table C.

At the beginning of the year, the National Library's unused surplus amounted to €1.6 million. The profit from 2025 will be transferred to the balance sheet, where surplus will grow to €2.1 million.

Main personnel statistics can be seen in tables D and E. Key indicators of the National Library's performance during 2022–2025 can be seen in table F.

Table A: National Library's income	2022	2023	2024	2025
	EUR	EUR	EUR	EUR
Basic funding income	19 290 446	20 215 761	21 313 406	22 839 636
Ministry of Education and Culture	19 245 996	20 184 000	21 285 996	22 779 746
University of Helsinki ¹	16 884	5 000	3 000	
Additional income ²	27 566	26 761	24 410	59 890
Supplementary funding income	5 251 734	5 476 259	7 577 326	8 188 648
Ministry of Education and Culture funding for projects	2 795 475	2 843 038	3 436 670	2 320 504
Public libraries	897 000	890 000	890 000	890 000
Finna	590 000	590 000	590 000	590 000
Melinda	708 000	700 000	700 000	200 000
Rental costs of newspaper storage facility	90 000	200 000	213 641	
E-Library			529 939	
ISNI identifiers			148 188	203 644
Other	510 475	463 038	364 902	436 860
Academy of Finland	129 314	251 331	214 816	231 783
EU funding	408 809	355 615	327 843	433 981
share of BOMPAC project	348 610	306 150	245 586	360 063
National funding for projects	1 201 523	1 261 701	746 903	597 345
Sibelius project	275 428	279 572	268 000	307 367
Swedish language newspapers	568 481	746 224		
HS/IS project	114 443	65 725	70 637	
JAES Keskustelevat kuvat			198 000	227 249
Other	243 171	170 180	210 266	62 729
ERDF funding			27 063	138 760
Other public funding (including universities, universities of applied sciences, municipalities, joint municipal authorities)	568 247	543 756	2 607 683	4 245 739
of which E-Library			2 135 743	3 712 357
Finnish companies ³	12 482	3 390		
University of Helsinki Funds, for the preservation of cultural heritage	123 854	198 384	180 028	119 020
Private households ⁴	12 030	19 044	36 320	48 506
Other foreign funding				53 009
Total income	24 542 180	25 692 020	28 890 731	31 028 285

1 In 2022 includes license fee deductions by the IT Center and in 2022-2023 transfer of funds coordinated by the Mikkeli University Consortium.

2 Including matched national funding for EU funded projects during 2024-2025.

3 CSC – IT Center for Science projects are included in Ministry funding in 2022 and 2023.

4 Includes digitization and sale of publications and copy cards.

Table B: National Library's expenditures	2022	2023	2024	2025
	EUR	EUR	EUR	EUR
Basic funding expenditures				
Salaries and personnel costs	9 740 514	10 390 385	10 613 746	10 803 425
Facility costs	5 465 335	5 929 657	6 346 077	6 573 117
Library material	480 014	471 392	506 369	574 405
Licenses for E-material	3 170 370	3 159 766	3 153 042	3 160 840
Other material costs	207 723	110 708	170 040	133 247
Assets and depreciation	426 180	327 138	253 245	215 268
Purchased services	1 094 430	1 284 048	1 538 432	1 325 342
Travel	82 019	127 446	117 795	117 325
Other expenditures	238 382	250 234	197 555	232 386
Total basic funding expenditures	20 904 967	22 050 774	22 896 301	23 135 355
Overhead	-812 225	-816 665	-939 899	-918 628
Self-financing	110 277	183 005	220 340	151 979
Total	20 203 020	21 417 115	22 176 743	22 368 707
Supplementary funding expenditures				
Salaries and personnel costs	3 997 907	4 314 081	4 479 941	4 257 858
Facility costs	164 424	178 126	191 299	
Materials	4 010	3 142	1 271 405	2 411 409
Assets	87 362	85 068	3 628	336
Purchased services	303 370	242 943	857 514	635 608
Travel	36 334	27 017	60 185	46 841
Other expenditures	9 901	10 761	2 669	77 980
Overhead	812 225	816 665	939 899	918 628
Self-financing	-110 277	-183 005	-220 340	-151 979
Total expenditures	25 508 276	26 911 913	29 762 944	30 565 387
<i>Supplementary:</i>				
National Library's total facility costs	5 629 759	6 107 783	6 537 377	6 573 117

Table C: Results of the financial year 2025	
	EUR
Basic funding (Ministry of Education and Culture) income	22 839 636
Basic funding (Ministry of Education and Culture) expenses	-22 368 707
Basic funding (Ministry of Education and Culture) result	470 930
Supplementary funding result	-8 032
Total result	462 898
Active balance from previous years	1 630 018
Active balance in 2026	2 092 915

Table D: Main personnel statistics (at the end of the year)				
	2022	2023	2024	2025
Permanent positions	218	218	219	226
Number of staff	260	263	262	257
- share of non-permanent positions	42 (16 %)	45 (17 %)	43 (16 %)	31 (12 %)
Full-Time Equivalent	242	251	253	248
Sick days / employee	9,9	8,5	9,9	10,2
Absence days / employee	15,2	14,2	16,3	18,5

Table E: Staff distribution	2022	2023	2024	2025	Share in 2025
Library staff	147	148	148	146	57 %
ICT staff	68	71	74	73	28 %
Other staff	45	44	40	38	15 %
Total	260	263	262	257	100 %

Table F: Key indicators 2022–2025				
Duties assigned in the Act on the deposit and conservation of cultural materials	Outcome 2022	Outcome 2023	Outcome 2024	Outcome 2025
Received physical items	88 907	88 109	90 893	88 349
Received e-legal deposit publications (files)	18 800	13 512	8 057	11 756
Growth of web archive (files)	278 million	200 million	595 million	680 million
Yearly growth of the national bibliography (records)	40 917	73 882	59 953	78 541
Share of automatically produced records in the National Bibliography	0 %	8 %	58 %	61 %
Cultural heritage for the common good	Outcome 2022	Outcome 2023	Outcome 2024	Outcome 2025
Digitized pages per year	3,12 million	2,50 million	2,14 million	1,92 million
Downloaded pages	18,1 million	16,3 million	16,9 million	16,8 million
Finna-services				
Finna.fi – records in total (national level)	17,4 million	17,8 million	18,6 million	19,4 million
Finna – number of participating organizations	479	484	493	525
Finna – total visits (national level)	51,6 million	59,3 million	91,4 million	142,6 million
National Library at the heart of the academic community	Outcome 2022	Outcome 2023	Outcome 2024	Outcome 2025
Number of researchers using copyrighted material through Tutkain-access	1 960	2 714	2 536	2 616
Number of scientific articles available through FinELib-agreements	5 783	5 781	6 722	7 219
National Library as a resource of Bildung and learning	Outcome 2022	Outcome 2023	Outcome 2024	Outcome 2025
Number of local customers	81 000	103 000	123 000	152 000
Amount of customer service tickets resolved	8 036	9 933	11 743	12 061
Number of visits to the National Library's online catalogue	471 000	598 000	604 276	667 847

Quality of services				
Customer satisfaction - individuals (4–10)	9,1	9,1	9,3	-
Customer satisfaction - individuals (1–5)	-	-	-	4,3
Customer satisfaction - organizations (1–5)	4,1		4,0	
Creating a powerful hub of expertise through network cooperation	Outcome 2022	Outcome 2023	Outcome 2024	Outcome 2025
Participants in events and training sessions	8 469	6 833	11 035	12 480
Number of events and training sessions	104	51	122	148
Organizations using services (number of service agreements)	1 185	1 224	1 333	1433
Melinda, number of participating organizations	287	291	294	297
E-Library: registered users			147 482	271 254
E-Library: loans of E- and audio books			491 482	1 712 670
Media coverage, number of mentions, including Finna and E-Library from 2024 onwards		6 200	8 000	6 600

New material

Size of National Bibliography

2,47 mil. [▲] + 3,3%

RECORDS



New legal deposit copies

100 105 [▲] + 1,3%

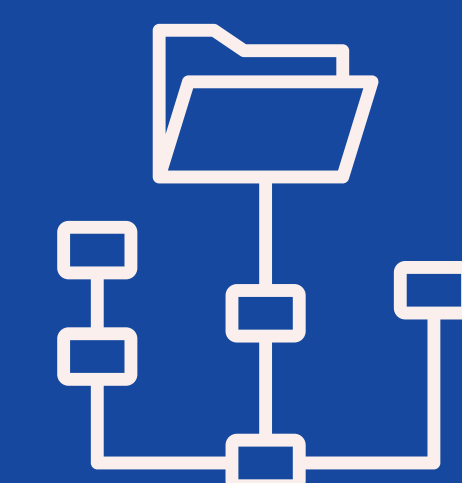
ANNUAL AMOUNT



Growth of web archive

680 mil. [▲] + 14,3%

NEW FILES



New scientific material

536 000 € [▲] + 3,9%

PURCHASES IN EUROS



Digitized pages

1,92 mil. [▼] - 10,3%

ANNUAL AMOUNT



Digitized material use

Digi.kansalliskirjasto.fi

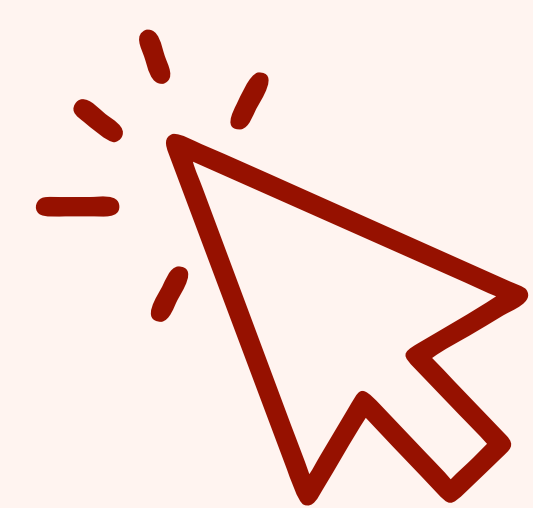


Downloaded pages of digitized material

16,8 mil. ▼ -0,6%

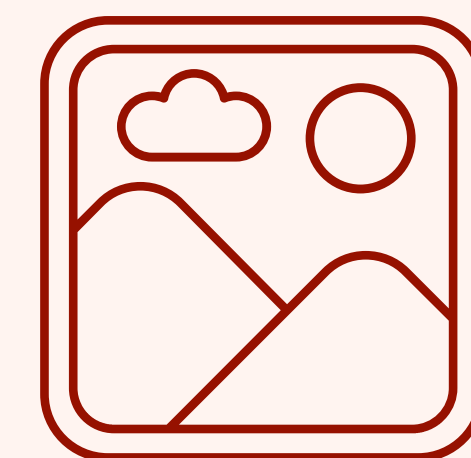
Finna.fi

Page visits



6 mil. ▲ +5,3%

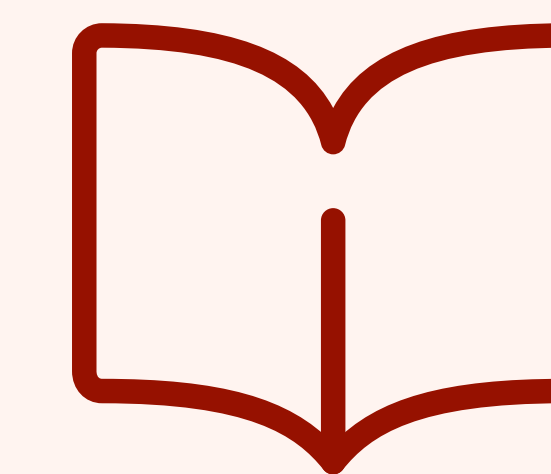
Amount of material



19,4 mil. ▲ +4,3%

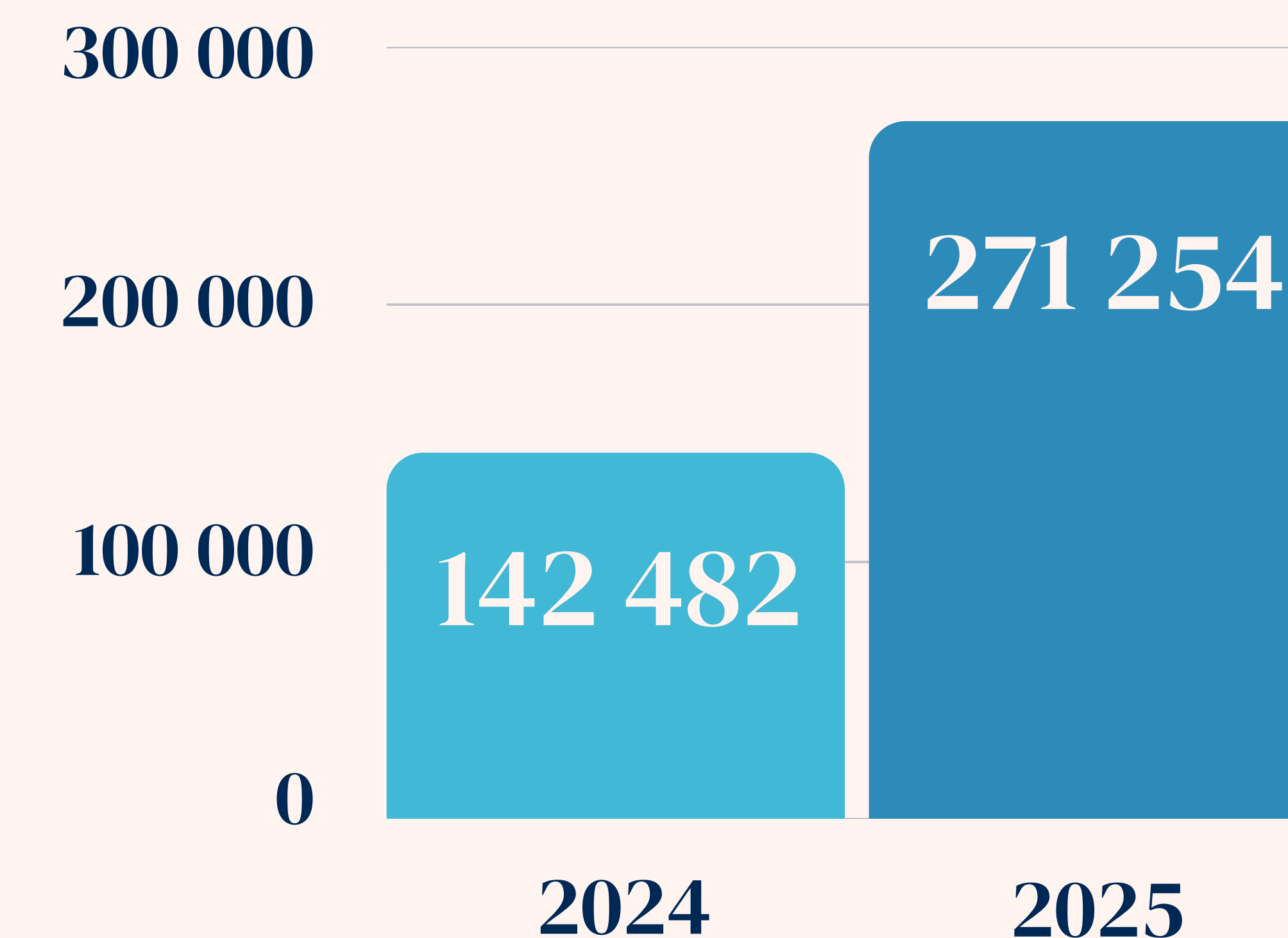
E-Library

Number of
E- and audio book loans



1,7 mil.*


Registered users



* No comparable value from previous year.

Customers

Number of visitors at the National Library

 **152 000** [▲] +23,6%

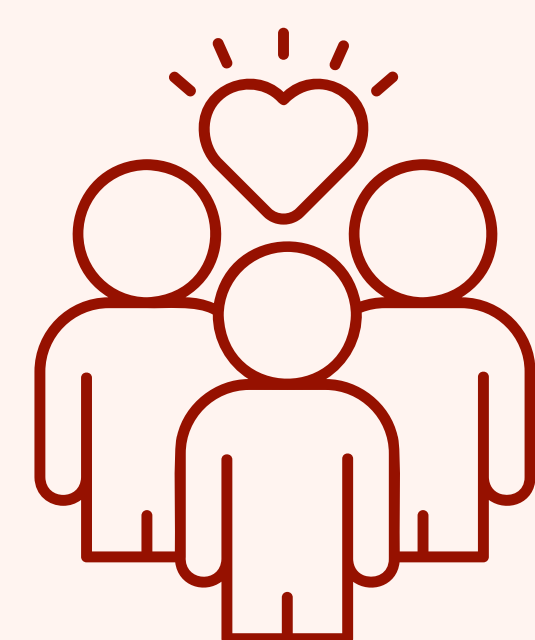
Events and training sessions

Number of events



148*

Number of participants



12 480*

Visits to the
online catalogue

667 847 [▲] +10,5%



Number of new loans

31 543 [▲] +1,25%



* No comparable value from previous year.

