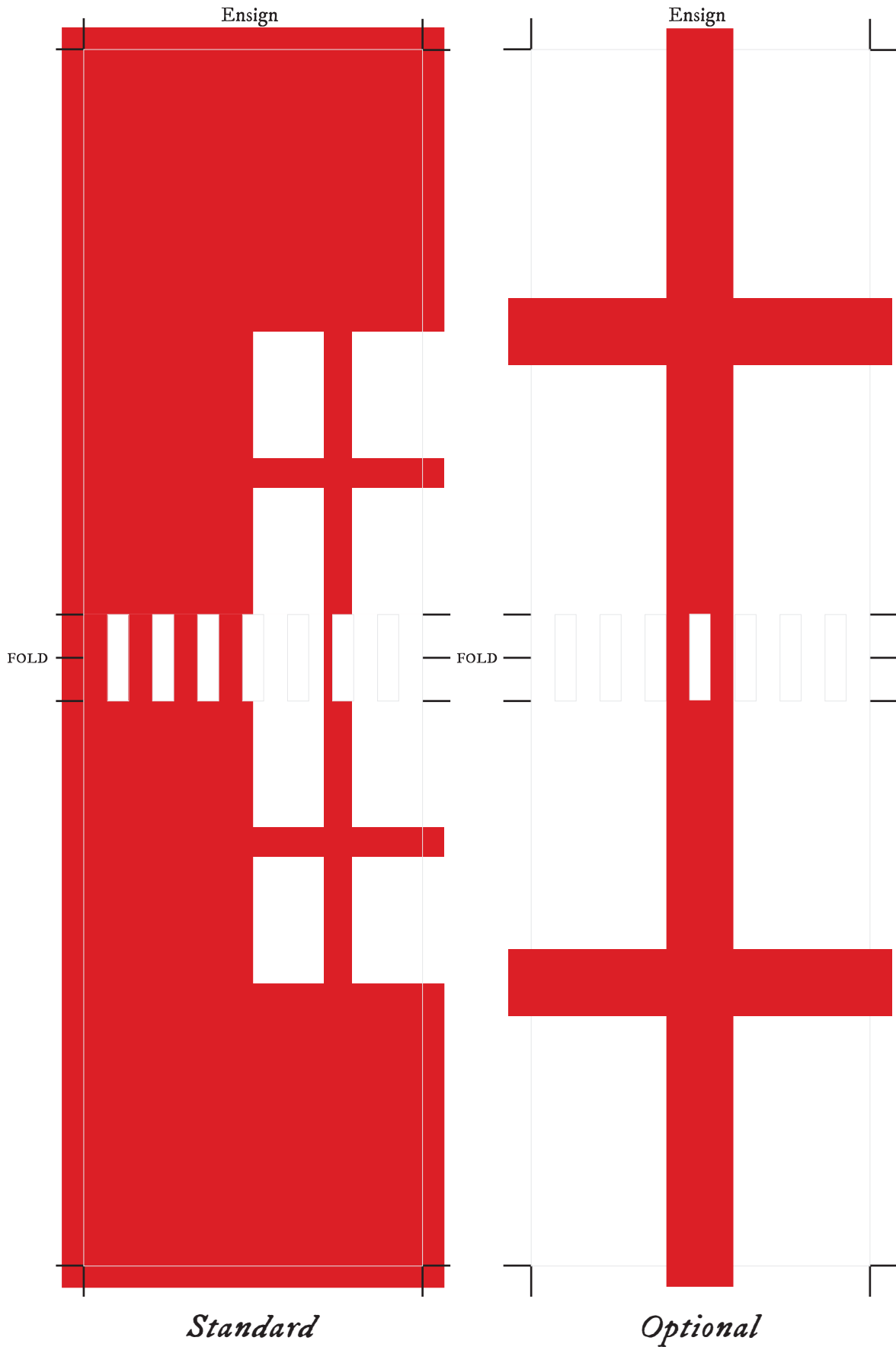


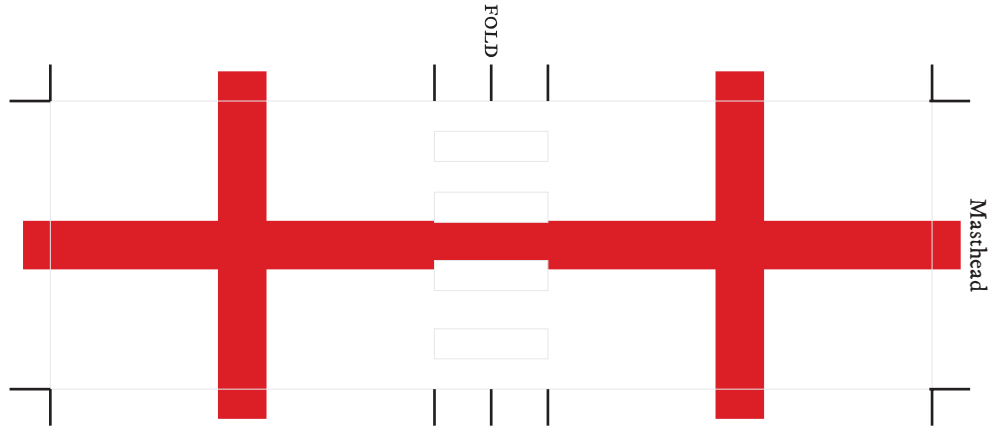


ENSIGNS

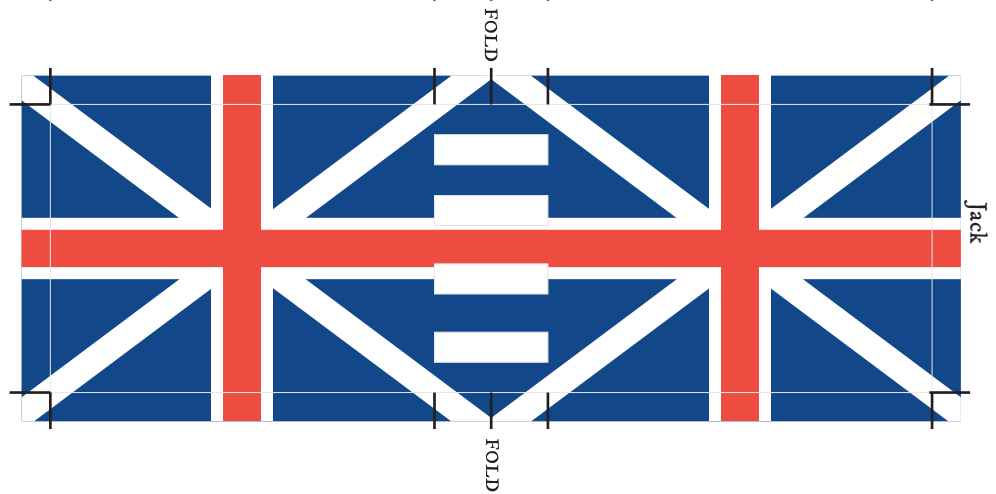




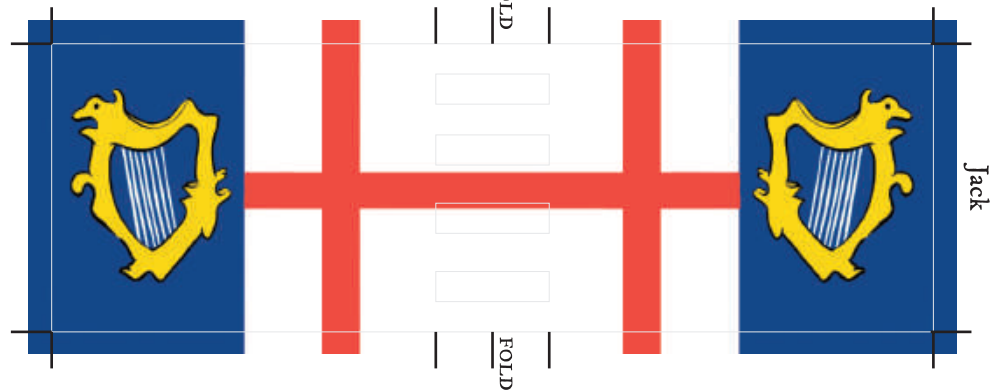
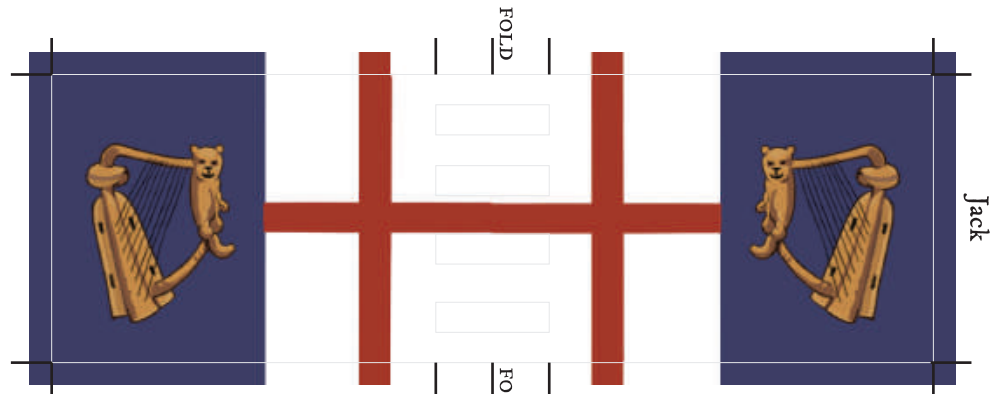
*Cross of st. George
Masthead*



Union Flag Jack

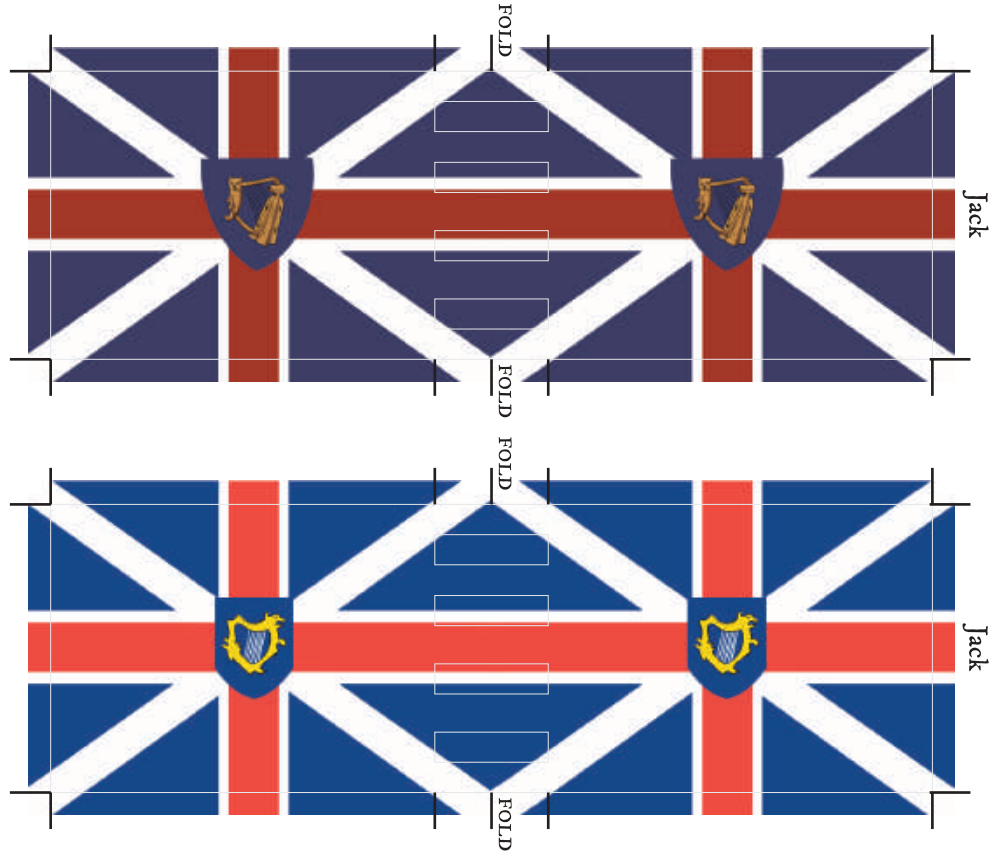


*Commonwealth Jack
(1649 to 1658)*

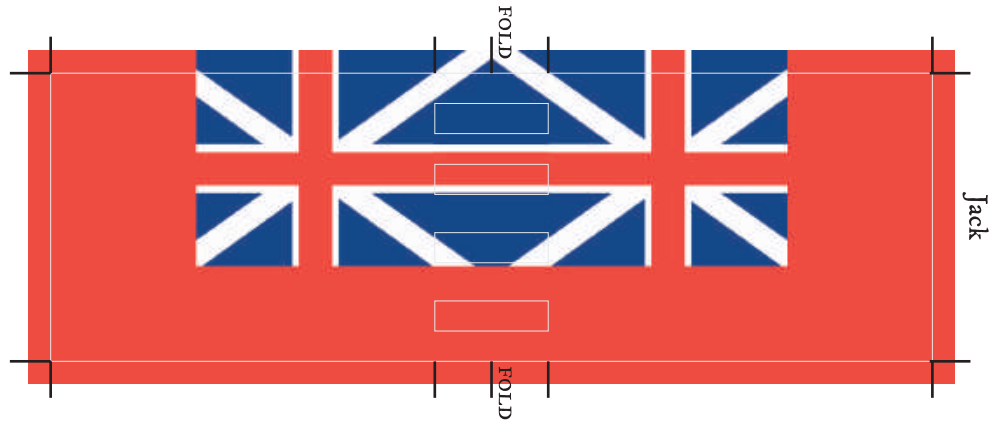




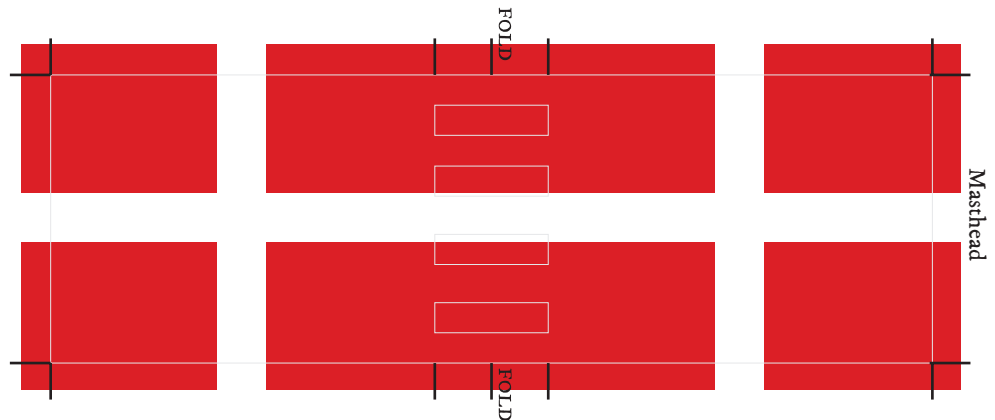
*Commonwealth Jack
(1658 to 1660)*

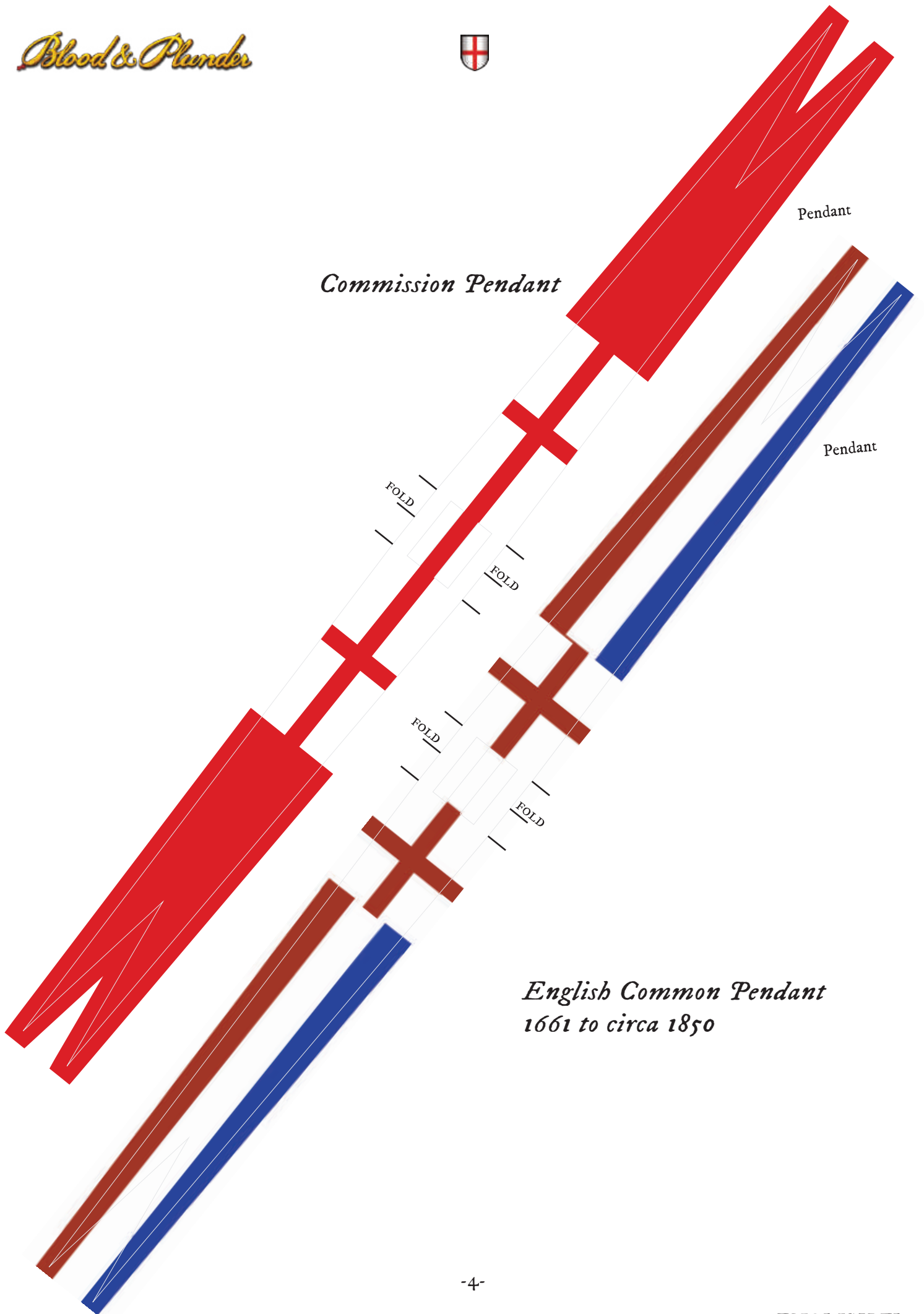


*Burgee/budgee "Privateer"
Jack (1694)*



*Morgan's
Squadron
Masthead*





Commission Pendant

Pendant

Pendant

*English Common Pendant
1661 to circa 1850*