



CT-401 Expert Square Tip Tweezers

Features:

- Precision-aligned square tips for a larger gripping surface.
- Ideal for tweezing more hairs at once.
- High quality of stainless steel.
- Long-lasting and easy to clean.



CT-402 Slant Tip Tweezers

Features

- Angled and flat edge is ideal for tweezing large areas quickly.
- Slant tips provide a more secure and firm hair grasping.
- Non-slip grip for precision control.
- High quality of stainless steel.
- Long-lasting and easy to clean.



CT-404 Comfort Grip Slant Tip Tweezers

Features:

- Padded grip for precision control.
- Angled and flat edge is ideal for tweezing large areas quickly.
- Slant tips provide a more secure and firm hair grasping.
- High quality of stainless steel.
- Long-lasting and easy to clean.



CT-405 Non-Slip Square Tip Tweezers

Features:

- Angled and flat edge is ideal for tweezing large areas quickly.
- Slant tips provide a more secure and firm hair grasping.
- High quality stainless steel.
- Long-lasting and easy to clean.



COSMETOLOGY TWEEZERS

CT-406

Diamond Slant Tip Tweezers

Features:

- Slant tips coated in diamond particles.
- Maximum gripping power.
- Angled and flat edge is ideal for tweezing large areas quickly.
- Slant tips provide a more secure and firm hair grasping.
- High Quality Stainless Steel.
- Long-lasting and easy to clean.



CT-408

Square Tip Tweezers (Non-Slip Grip)

Features

- Precision-aligned square tips for a larger gripping surface.
- Idea for tweezing more hair at once.
- Non-slip grip for precision control.
- High quality of stainless steel.
- Long-lasting and easy to clean.



CT-409 A

Electroplated Square Tip Tweezers (Non-Slip Grip)

Features:

- Electroplated stainless steel for better durability.
- Precision-aligned square tips for a larger gripping surface.
- Idea for tweezing more hair at once.
- Non-slip grip for precision control.
- Long-lasting and easy to clean.



CT-409 B

Electroplated Square Tip Tweezers

Features:

- Electroplated stainless steel for better durability.
- Precision-aligned square tips for a larger gripping surface.
- Idea for tweezing more hair at once.
- Long-lasting and easy to clean.



COSMETOLOGY TWEEZERS

CT-409 C

Square Tip Tweezers (Satin Finish)

Features:

- Precision-aligned square tips for larger gripping surface.
- Ideal for tweezing more hair at once.
- Satin finish.
- High Quality Stainless Steel.
- Long-lasting and easy to clean.

A woman with dark hair pulled back, looking directly at the camera. She is holding a pair of tweezers near her ear, demonstrating their use. She is wearing a white strapless top.

COSMETOLOGY

TWEEZERS

CT-411

Hardened Stainless Steel Nail Clippers

Features:

- Compact design.
- Comfortable non-slip grip.
- Super sharp blades cut all nails and leave a smooth cut.
- High Quality Stainless Steel.
- Long-lasting and easy to clean.



CT-412

Hardened Stainless Steel Toenail Clipper

Features:

- Compact design.
- Comfortable non-slip grip.
- Super sharp blades cut all nails and leave a smooth cut.
- High Quality Stainless Steel.
- Long-lasting and easy to clean.



CT-413

Swivel Nail Clipper

Features:

- 360 degree rotating head for a more comfortable nail cutting and easier angle adjustment.
- Modern and ergonomic Design.
- Super sharp blades cut all hard nails and leave a smooth cut.
- Long handles allow for better gripping.
- High quality stainless steel
- Long-lasting and easy to clean.



CT-417

Nail Clippers (Curved Blades)

Features:

- Super sharp and slightly curved blades leaves a smooth cut.
- High quality stainless steel.
- Long-lasting and easy to clean.



COSMETOLOGY

NAIL CLIPPERS

CT-418

Toenail Clipper (Curved Blades)

Features:

- Super sharp and slightly curved blades leaves a smooth cut.
- High quality stainless steel.
- Long-lasting and easy to clean.



CT-419

Nail Clipper with Plastic Container

Features:

- Compact design.
- Designed with plastic Container.
- Comfortable Non-slip grip.
- Super sharp blades leaves a smooth cut.
- High quality stainless steel.
- Long-lasting easy to clean.



CT-420

Toenail Clipper with Plastic Container

Features:

- Compact design.
- Designed with plastic Container.
- Comfortable Non-slip grip.
- Super sharp blades leaves a smooth cut.
- High quality stainless steel.
- Long-lasting easy to clean.



COSMETOLOGY

NAIL CLIPPERS

CT-421

Nail and Cuticle Scissors

Features:

- Super sharp and slightly curved blades cut all nails and cuticles and leaves a smooth cut.
- Trim nails effectively and comfortably.
- High quality stainless steel.
- Long-lasting and easy to clean.



CT-422

Cuticle Scissors (Extra-Fine Blades)

Features:

- Idea for detailed work and sensitive areas.
- Extra-fine blades cut cuticles smoothly.
- Trim cuticles effectively and comfortably.
- High quality stainless steel.
- Long-lasting easy to clean.



CT-423

Safety Scissors

Features:

- Rounded tips prevent accidental cuts.
- Ideal for sensitive or delicate areas.
- High Quality Stainless Steel.
- Long-lasting easy to clean.



COSMETOLOGY

CUTICLE SCISSORS

CT-427

Professional Hair Scissors

Features:

- Super-sharp blades that can easily trim hair.
- Excellent control and proper blade alignment for wet or dry hair.
- Ergonomical Design.
- Perfect for salon workers and barbers.
- High quality stainless steel.
- Easy to use and clean.



CT-428

Professional Hair Thinning Scissors

Features:

- Idea for detailed work and sensitive areas.
- Extra-fine blades cut cuticles smoothly.
- Trim cuticles effectively and comfortably.
- High quality stainless steel.
- Long-lasting and easy to clean.



COSMETOLOGY

HAIR SCISSORS

CT-431

Nail and Toenail Nipper

Features:

- Super-sharp and curved cut all nails and leaves a smooth cut.
- Prevents ingrown nails and toenails.
- High quality stainless steel.
- Long-lasting and easy to clean.



CT-432

Full Jaw Cuticle Nipper

Features:

- Super-sharp blades cut all cuticles, hangnails and leaves a smooth cut.
- Full jaw covers large areas.
- High quality stainless steel.
- Long-lasting and easy to clean.



CT-433

Cuticle Nipper (Silicone Handle)

Features:

- Silicone handles for better control and easier cutting.
- Super-sharp blades cut all cuticles, hangnails and leaves a smooth cut.
- High Quality Stainless Steel.
- Long-lasting easy to clean.



COSMETOLOGY

CUTICLE NIPPERS

CT-438 Mini Plastic Nail Files (Coloured)

Features:

- Compact Design.
- Ideal for removal of rough cuts and edges.
- Double sided.
- Long-lasting.



CT-439 4 Way Mini Nail Buffers

Features:

- Compact Design.
- Four sides for filing, buffing, polishing and and shining nails.
- Easy to grip and use.
- Long-lasting.



CT-440 4 Way Nail Buffer

Features:

- Four sides for filing, buffing, polishing and and shining nails.
- Easy to grip and use.
- Long-lasting.



CT-441 Fiberglass Nail File

Features:

- Ideal for buffing and shaping nails.
- Comfortable Non-Slip Grip.
- High quality material.
- Long-lasting and easy to clean.



COSMETOLOGY NAIL FILES & BUFFERS

CT-443 Nail Polishing File

Features:

- Perfectly polishes the nails.
- Both sides allows you to buff and polish the nails.
- Double sided.
- Long-lasting and easy to clean.



CT-445 Sapphire Nail File

Features:

- Coated in synthetic sapphire particles for a smoother finish and increased durability.
- Helps in shaping, smoothing, and finishing nails.
- Easy to grip and use.
- Double-sided and Long lasting.



CT-446 Plastic Nail File

Features:

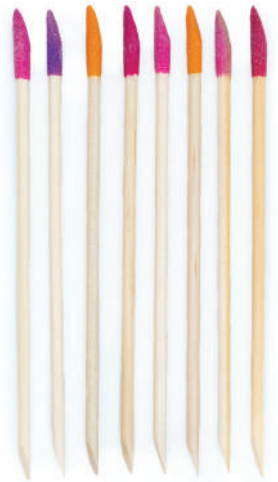
- Ideal for removing rough cuts and edges.
- Easy to grip and use.
- Long-lasting.



CT-447 Wooden Nail Files

Features:

- Ideal for pushing back cuticles and cleaning the nails (under and around).
- Flat-end and pointed-end for multiple use.
- Long-lasting strong wood.



COSMETOLOGY

NAIL FILES & BUFFERS

CT-448 Cuticle Trimmer

Features:

- Ideal for detail work and sensitive areas.
- Trims cuticles effectively and comfortably.
- Comfortable grip.
- Long-lasting and easy to clean.



CT-449 Finger Separator

Features:

- Comfortable cushioning.
- Makes manicure and pedicure much easier.
- Lightweight and compact design.
- Easy to use.



CT-450 Acne Blackhead Remover

Features:

- Dual-end: for both Blackheads and Whiteheads removal.
- Non-Slip grip for better control.
- High quality stainless steel.



COSMETOLOGY TOOLS

CT-451

Precision Eyelash Curler with Refill Pad

Features:

- Optimize the natural curl of lashes.
- Perfectly calliberated hinges for precision control.
- Curler's replaceable contoured pads provides comfort and safety..
- Suitable for all eye shapes.



1 Open the curler and Place the curler near roots of lashes

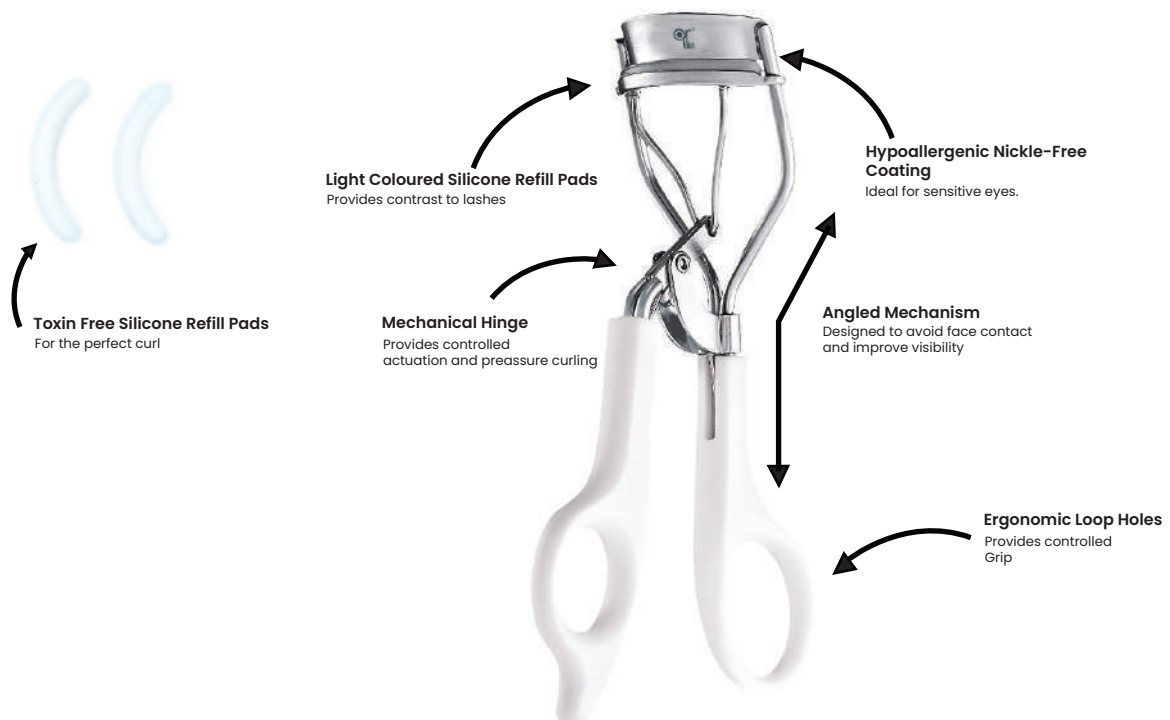


2 Squeeze curler gently on the lashes and hold in place for several seconds



3 Repeat several times in outward and upward direction to achieve your desired eyelash curl

ERGONOMIC DESIGN



COSMETOLOGY TOOLS

CT-452

Acne Double-Head Remover

Features:

- High Quality Stainless Steel.
- A small hole is used to apply gentle pressure to the area so the trapped sebum is pushed up.
- A small loop head is typically used for whiteheads, which are on hard to reach areas.
- Anti-allergic and Antibacterial.
- Non-slip grip for better control.
- Easy to use and clean.



CT-453

Cuticle Pusher and Cutter

Features:

- High Quality Stainless Steel.
- Designed for painless cuticle maintenance.
- Sharp to cut or scrape away dead cuticle on one end.
- Curved flat end perfectly pushes the skin back flawlessly.
- Textured handles for extended durability and non-slip grip.
- Easy to use and clean.



CT-459

Emery Nail Files

Features:

- Four sides for filing, buffing, polishing and and shining nails.
- Easy to grip and use.
- Long-lasting.



COSMETOLOGY

NAIL FILES & BUFFERS

CT-461 Callus Remover Wooden Handle

Features:

- Removes thick calluses and dead skin from the foot.
- Enhances the smoothness of the foot.
- Double-sided.
- Easy to use.
- Long Lasting and easy to clean.



CT-462 Callus Remover Plastic Handle

Features:

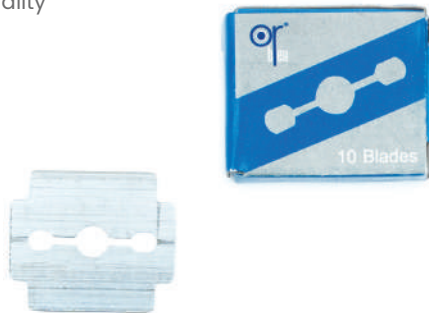
- Removes thick calluses and dead skin from the foot.
- Enhances the smoothness of the foot.
- Double-sided.
- Easy to use.
- Long Lasting and easy to clean.



CT-467 Corn Cutter Blades

Features:

- 10 Super sharp blades.
- Made from High quality material.
- Long-lasting.



CT-468 Corn Plane with Safe Blades

Features:

- Removes corns and calluses from the feet.
- Helps in relieving the pain.
- Replaceable blades.
- High quality of stainless steel with rubber.
- Long-lasting and easy to clean.



COSMETOLOGY

NAIL FILES & BUFFERS

CT-473

Stainless Steel Foot File with Refill Grits

Features:

- Easiest way to remove the calluses and old cracked foot skin.
- Large pad surface to optimize the efficiency.
- Enhances the smoothness of the foot.
- Stainless steel handle can be sterilized after removal of the sick-on grits.
- Comes with 10 pieces of grit replacement pads (5 Coarse / 5 Fine Refill pads).



CT-474

10 Grit Stainless Steel Pedicure Refill Files

Features:

- Designed to remove the calluses and old cracked foot skin
- Premium quality grit paper.
- Easy application.
- Disposable.



COSMETOLOGY

NAIL FILES & BUFFERS

CT-490

Professional Beauty Travel Set (6 Pieces)

Features:

- Easy to use for both toenails and fingernails.
- Travel size and portable, convenient to carry, suitable for travel use.
- Made with premium quality stainless steel, not easy to rust and distort.
- Suitable for Professional Salon use or home use.
- Available in Pink and Blue colours.

Includes:

- 1x Toenail Clippers
- 1x Nail Clippers
- 1x Nail and Cuticle Scissors
- 1x Cuticle Pusher
- 1x Slanted Tweezers
- 1x Sapphire Nail File



professional Beauty Travel Set

COSMETOLOGY

NAIL FILES & BUFFERS

CT-503

Facial and Ocular Beauty Blenders

Features:

- Made from a safe ingredients and have smooth consistency.
- Large sponge for an overall coverage and facial makeup.
- Used for all types of foundation – including powder, cream and liquid.
- Perfect for all skin types.
- Easy to clean.



CT-504

Konjac Facial Sponges

Features:

- Made from natural konjac plant roots.
- Hypoallergenic, suitable for all skin types, especially for sensitive skin and baby skin.
- For all facial care needs. Removes dirt, excess oil, blackheads, makeup, and cleanses pores.
- Easy to use and clean.



CT-512

Roundy Pocket Mirror

Features:

- Perfect for tweezing eyebrows, removing facial hair and applying makeup flawlessly.
- Equipped with two mini mirrors for regular or magnified view
- Compact Design.



CT-513

Face Defuzzer

Features:

- Designed for safer hair removal, can be used for peach fuzz, edges and sideburns.
- Provides a smoother skin.
- Precise & narrow design to help shape and trim eyebrows with controlled precision.



COSMETOLOGY TOOLS

CT-540

VelourGlace Beauty Blender Teardrop

Features:

- Made from premium latex-free material.
- Tear-Drop Shape.
- Damp or Dry Application.
- Easy to clean.



CT-541

VelourGlace Beauty Blender Precision

Features:

- Made from premium latex-free material.
- Unique 4 sided Precision Design.
- Damp or Dry Application.
- Easy to clean.



CT-542

VelourGlace Beauty Blender Ellipse

Features:

- Made from premium latex-free material.
- Unique Elliptical Shape.
- Damp or Dry Application.
- Easy to clean.



CT-543

VelourGlace Beauty Blender Flat-End

Features:

- Made from premium latex-free material.
- Unique Flat End Design.
- Damp or Dry Application.
- Easy to clean.



COSMETOLOGY TOOLS

CT-544

VelourGlance Beauty Blender Spade

Features:

- Made from premium latex-free material.
- Unique Spade Shape Design.
- Damp or Dry Application.
- Easy to clean.



CT-545

VelourGlance Beauty Blender Flat Edge

Features:

- Made from premium latex-free material.
- Unique Flat Edge Design.
- Damp or Dry Application.
- Easy to clean.



CT-546

VelourGlance Beauty Blender Mini

Features:

- Compact Size
- Made from premium latex-free material.
- Unique Teardrop Shape.
- Damp or Dry Application.
- Easy to clean.



CT-547

Makeup Air Puff

Features:

- Made from premium Rubycell material.
- Delicate and Soft Surface.
- Seamless Blending.
- Recommended for Dry use.
- Easy to clean.



COSMETOLOGY TOOLS

CT-548 Makeup Puff

Features:

- Made from premium Hydrophilic latex-free material.
- Porous Surface.
- Seamless Blending.
- Ergonomic Design.
- Versatile Application.
- Easy to clean.



CT-549 Makeup Wedges

Features:

- Made from premium latex-free material.
- Seamless Blending.
- Ergonomic Design.
- Versatile Application.
- Easy to clean.



CT-531 Baby Nail Clippers

Features:

- Effectively trims baby's nails.
- Includes a plastic container for collecting nails or an easier and more hygienic manicure and pedicure.
- Large handles provide easier grip.
- Easy to use and clean.



CT-532 Baby Hairbrush

Features:

- Round head design can avoid scratching the baby's delicate scalp.
- Soft brush can brush away scales from the newborn scalp, keeping the baby's head clean.
- Super soft natural bristles
- Easy to use and clean.



COSMETOLOGY TOOLS

CT-601
Cosmetic Compact Puff

Features:

- Washable and reusable soft sponge material.
- Distributes powder evenly on the face.
- Made from Premium absorbant material.



CT-604
Velour Compact Puff

Features:

- Washable and reusable soft sponge material.
- Distributes powder evenly on the face.
- Made from Premium absorbant material.



CT-605
Hydrophilic Star Sponge

Features:

- Latex-free.
- Made from High Quality Sponge Material.
- Removes makeup and cleanses facial pores effectively.



CT-607
Cleansing Facial Sponge

Features:

- Latex-free.
- Made from High Quality Sponge Material.
- Removes makeup and cleanses facial pores effectively.



COSMETOLOGY

TOOLS

CT-608 Mascara Brushes

Features:

- Easy to use and convenient to carry.
- Helps separate lashes for a better look.
- Removes excess mascara.



CT-609 Makeup Brushes

Features:

- Easy to use and convenient to carry.
- Helps applying makeup in multiple ways.
- Easy application and lightweight.



CT-610 Eyeshadow Brushes

Features:

- Suitable for lightweight makeup.
- Comfortable to carry around.
- Ideal for lightweight application.



CT-611 Lip Brushes

Features:

- Ultra soft fibers for better precision and control.
- Flat shape makes any application smooth and flawless.
- Lightweight application.

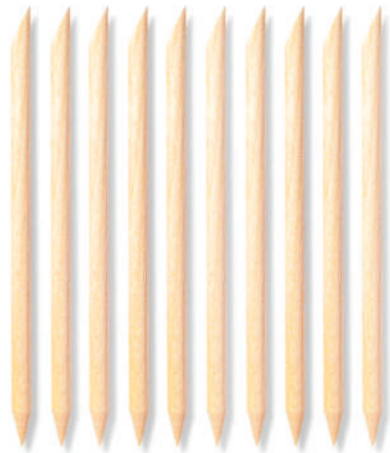


COSMETOLOGY TOOLS

CT-613 Cuticle Sticks

Features:

- Orange wood cuticle sticks.
- Dual end cuticle sticks feature a pointed end, ideal for cleaning under nails and a flat angled end for pushing back cuticles
- Idea for Nail Prep, Nail Art, Nail Extensions and Gel Polish Removal.



CT-614 Pencil Sharpener

Features:

- Eyeliner and lipliner sharpener.
- Compact size that can fit in any pocket purse.
- Plastic casing.



CT-615 Dual Pencil Sharpener

Features:

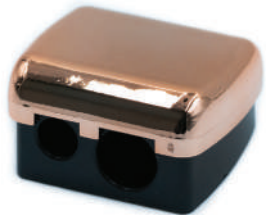
- Eyeliner and lipliner sharpener.
- Compact size that can fit in any pocket purse.
- Plastic casing.



CT-616 Dual Pencil Sharpener

Features:

- Made of High quality plastic.
- Built-in cover to capture cut shavings.
- Suitable for all types of cosmetic pencils.



COSMETOLOGY TOOLS

CT-624 Makeup Brushes Set

Features:

- Made from plastic material and soft bristles.
- Ideal for retouching the makeup during the day.
- The set consists of five brushes to identify and enhance the face with a perfect texture.



CT-651 Facial Cleansing Sponge

Features:

- Made from High quality cellulose material.
- Designed for facial cleansing and makeup removal.
- Ideal for sensitive skin.



CT-652 Cylindrical Makeup Sponges

Features:

- Easy to wash, soft and comfortable.
- Perfect for around the eyes and nose.
- Suitable for all skin types.



CT-654 Makeup Blending Sponge

Features:

- Washable and reusable soft sponge with micro-fiber structure.
- It is suitable for a wide variety of cosmetics.
- Ideal for sensitive skin.



COSMETOLOGY TOOLS



or[®]
bleu

professional
facial brushes

CT-671 Powder Brush

Features:

- Soft and smooth fibers.
- Classic black fibers and wooden handle with extra-strong aluminium ferrule.
- Unique-designed for powder application. Fluffed, rounded brush head is created to pick up and apply the perfect amount of powder every time. Pairs well with your favorite powder.



CT-672 Blush Brush

Features:

- Classic black fibers and wooden handle with extra-strong aluminium ferrule
- Ultra-fine fibre hair.
- Ideal for highlighting and contouring the hollows of the cheeks and cheekbones. It can be used with loose and compact powder, and is ideal for applying powder blush and sculpting kits too.



CT-673 Foundation Brush

Features:

- Ultra Soft and smooth fibers.
- Classic black fibers and wooden handle.
- Perfect for concealing, highlighting and contouring.
- Unique-designed shape. it allows you to tap on products for flawless, full-coverage finish, but does not absorb too much product or wear out like a beauty sponge does. It smooths foundation into skin easily and quickly for a seamless finish.



CT-674 Sculpting Brush

Features:

- Soft and smooth fibers.
- Classic black fibers and wooden handle.
- Designed to help and create defined contours.
- The curved face brush adjusts perfectly to any facial shape and models the face with liquid and cream contour products or seamlessly blends foundation for an immaculate, professional finish.



COSMETOLOGY

FACIAL BRUSHES

CT-675 Eyeshadow Brush

Features:

- Soft and smooth fibers.
- Classic black fibers and wooden handle.
- Suitable to control the blending of eyeshadow.
- 'C' shaped bristles create the perfect smokey eye.
- Holds any cream, powder, or liquid formula without absorption. Exclusively designed ergonomic handle fits perfectly in your hand for precise application.



CT-676 Eyeshadow Brush

Features:

- Soft and smooth fibers.
- Classic black fibers and wooden handle.
- Suitable to control the blending of eyeshadow.
- 'C' shaped bristles create the perfect smokey eye.
- Made with high-tech synthetic fibers.
- Easy to clean.



CT-677 Blending Brush

Features:

- Soft and smooth fibers.
- Classic black fibers and wooden handle.
- Perfect for blending the eyeshadow.
- Used to apply and blend the concealer.
- Expertly blends multiple eye shades while softening dramatic edges and fine lines. Also use it to set powder or liquid concealer.



CT-678 Flat Eyeliner Brush

Features:

- Soft and smooth fibers.
- Classic black fibers and wooden handle.
- For thin lines perfect precision.
- Suitable for powder, liquid or cream.
- Ideal for outlining, shading, and correcting the shape of eyebrows. It also doubles as an angled eyeliner brush to help you draw the perfect wings or cut-crease.



COSMETOLOGY

FACIAL BRUSHES

CT-679 Eyelash & Eyebrow Brush

Features:

- Soft and smooth fibers.
- Classic black fibers and wooden handle.
- Create beautifully groomed lashes and brows.
- Suitable for removing and defining the eyebrows.
- Made with high-tech synthetic fibers.
- Easy to clean.



CT-680 Concealer Brush

Features:

- Soft and smooth fibers.
- Classic black fibers and wooden handle.
- Ideal for a concentrated covering.
- Used to apply the makeup on eye rims.
- Made with high-tech synthetic fibers.
- Easy to clean.



CT-681 Angled Eyeliner Brush

Features:

- Soft and smooth fibers.
- Classic black fibers and wooden handle.
- Thin-pointed bristles create accurate color application.
- Made with high-tech synthetic fibers.
- Easy to clean.



CT-682 Brow Comb

Features:

- Eco-friendly extra soft bristles.
- Perfect for flawless application.
- Used to remove clumps from mascara.
- Suitable for eyebrow shape and softens hair texture.
- Easy to clean.



COSMETOLOGY

FACIAL BRUSHES

CT-684 Max Powder Brush

Features:

- Expertly engineered with high-grade synthetic fibres that are resistant to breakage.
- Made with nickel-plated brass ferrules with light and durable handles.
- Expertly applies all types of powders across the entire face and sculpts features beautifully.
- Non-porous fibres that are easy to clean.



CT-685 Fan Brush

Features:

- Expertly engineered with high-grade synthetic fibres that are resistant to breakage.
- Made with nickel-plated brass ferrules with light and durable handles.
- Expertly applies all types of powders across the entire face and sculpts features beautifully.
- Non-porous fibres that are easy to clean.



CT-702 Disposable Mascara Brushes

Features:

- Extremely lightweight.
- Plastic handle with premium quality silicone bristles.
- Perfect for lengthening, curling, defining and volumizing.
- Removes excess mascara residue.
- Contains 12 pieces of disposable mascara/eyebrow brushes.



CT-701 Silicone Makeup Washing Tool

Features:

- Made of high quality food-grade silicone.
- Suitable for professional or home use.
- Compact size.
- Long lasting and easy to use.



COSMETOLOGY

FACIAL BRUSHES

CT-683
Lip Brush

Features:

- Soft and smooth fibers.
- Classic black fibers and wooden handle.
- Applies evenly on lips
- Compact Design.
- Made with high-tech synthetic fibers.
- Easy to clean.



CT-699
Makeup Brush Cleaning Tool

Features:

- Made from premium Silicone.
- Suitable for professional or home use.
- Compact size.
- Long-lasting and easy to clean.



COSMETOLOGY
FACIAL BRUSHES

CT-690

Curved Makeup Brush with Oval Head

Features:

- Oval and angular surface offers effortless application and seamless blending.
- Does not absorb much of the liquid or powder applied.
- Tilted handle for precision and stability.
- Professionally crafted to blend foundation, powder, cream, fluid, moisturizers or primer, seamlessly onto your skin.
- Ultra-fine fibre bristles that is used for multiple purpose of makeup application.



CT-691

Curved Makeup Brush with Oval Head

Features:

- Oval and angular surface offers effortless application and seamless blending.
- Curved and angular shape is designed to provide you with the convenience of handling.
- Tilted handle for precision and stability.
- Professionally crafted to blend foundation, powder, cream, fluid, moisturizers or primer, seamlessly onto your skin.
- Ultra soft, flexible and high density bristles provide great care for your delicate skin.



CT-692

Curved Makeup Brush with Oval Head

Features:

- Oval and angular surface offers effortless application and seamless blending.
- Gives you the perfect foundation application you need.
- Tilted handle for precision and stability.
- With a concave design, which is perfect for you to apply liquid foundation with ease.
- Ultra soft, flexible and high density bristles that is skin friendly.



CT-693

Curved Makeup Brush with Thin Head

Features:

- Oval and angular surface offers effortless application and seamless blending.
- Does not absorb much of the liquid or powder applied.
- Made from highly dense, fine and soft brush hair from long lasting synthetic.
- Professionally crafted to blend foundation, powder, cream, fluid, moisturizers or primer, seamlessly onto your skin.
- Ergonomic and flexible handle is which is robust and fits snugly in the hand for easy application.



COSMETOLOGY

FACIAL BRUSHES



CT-694

Curved Makeup Brush with Round Head

Features:

- Oval and angular surface offers effortless application and seamless blending.
- Does not absorb much of the liquid or powder applied.
- Tilted handle for precision and stability.
- Professionally crafted to blend foundation, powder, cream, fluid, moisturizers or primer, seamlessly onto your skin.
- Ultra soft, flexible and high density bristles provide great care for your delicate skin.



COSMETOLOGY

FACIAL BRUSHES

CT-695 Silicone Makeup Brush

Features:

- Made from highest-quality premium Silicone.
- Applies and blends makeup perfectly.
- Perfect for daily makeup.
- Flexible tilt handle for more accuracy and stability.
- Curved design provides you with a convenient to hold-steady build.



CT-696 Silicone Makeup Brush

Features:

- Made from high-quality premium Silicone.
- Applies and blends makeup perfectly.
- Does not absorb liquid or powder product.
- Multiple use of makeup application, whether its powder, blush or foundation.
- Flexible tilt handle for more accuracy and stability.
- Long-lasting and easy to clean.



CT-697 Silicone Makeup Brush

Features:

- Made from high-quality premium Silicone.
- Applies and blends makeup perfectly.
- Does not absorb liquid or powder product.
- Perfect for daily makeup.
- Flexible tilt handle for more accuracy and stability.
- Long-lasting and easy to clean.



CT-698 Silicone Makeup Sponge

Features:

- Made from premium Silicone.
- Gives a smooth and flawless look.
- Does not absorb liquid or powder products.
- Antimicrobial.
- Easy to use and clean.



COSMETOLOGY

FACIAL BRUSHES



professional
eyelashes

CT-950

Individual Natural Eyelashes 8mm

Features:

- Made of ultra-soft and weightless synthetic fiber.
- Make your eyes look bright and attractive.
- Give a real and natural look.
- Simple to use, comfortable to wear and reusable.
- Strong adhesive.

Natural Eyelashes - 8mm ▼



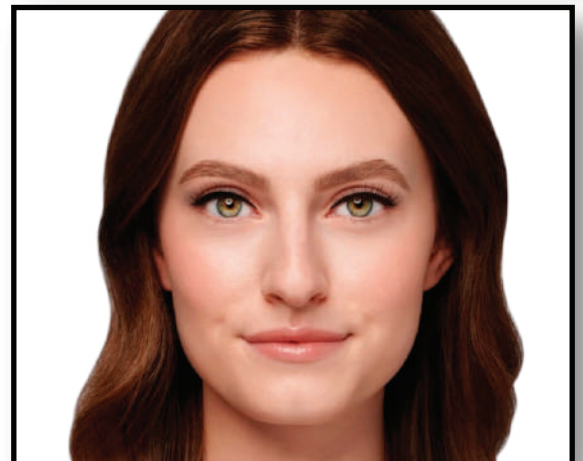
Natural Eyelashes - 10mm ▼



Natural Eyelashes - 12mm ▼



Natural Eyelashes - 14mm ▼



COSMETOLOGY

EYELASHES

CT-953

Striplash Adhesive - Clear

Features:

- Or Bleu® Lash Glue is totally Alcohol-Free, Gluten Free, Sulfate Free & BPA Free.
- Suitable for sensitive eyes.
- Dries quickly, undetectable, and holds DIY eyelash extension securely in place.
- 24H Strong Hold.
- Gentle formula.



CT-954

Striplash Adhesive - Black

Features:

- Or Bleu® Lash Glue is totally Alcohol-Free, Gluten Free, Sulfate Free & BPA Free.
- Suitable for sensitive eyes.
- Dries quickly, undetectable, and holds DIY eyelash extension securely in place.
- 24H Strong Hold.
- Gentle formula.



COSMETOLOGY
EYELASHES

CT-955

Complete Natural Eyelashes

Features:

- Classic, fully laden style, for an ample, regular lash look.
- Made of lightweight faux mink lashes.
- The clear band lashes make your eyelashes look more beautiful, natural and attractive.
- Lash glue and application and care instructions included.

Natural Eyelashes - Style 02 ▼



Natural Eyelashes - Style 04 ▼



Natural Eyelashes - Style 06 ▼



Natural Eyelashes - Style 09 ▼



Natural Eyelashes - Style 10 ▼



Natural Eyelashes - Style 11 ▼



Natural Eyelashes - Style 13 ▼



Natural Eyelashes - Style 17 ▼



Natural Eyelashes - Style 20 ▼



Natural Eyelashes - Style 28 ▼



COSMETOLOGY

EYELASHES

CT-956

3D Natural Eyelashes - Complete Set

Features:

- Classic, fully laden style, for an ample, regular lash look.
- Made of lightweight faux mink lashes.
- The clear band lashes make your eyelashes look more beautiful, natural and attractive.
- Lash glue and application and care instructions included.



3D Lashes - Style 36 ▲



3D Lashes - Style 03 ▲



3D Lashes - Style 09 ▲



3D Lashes - Style 17 ▲



3D Lashes - Style 23 ▲



3D Lashes - Style 04 ▲



3D Lashes - Style 11 ▲



3D Lashes - Style 18 ▲



3D Lashes - Style 24 ▲



3D Lashes - Style 05 ▲



3D Lashes - Style 12 ▲



3D Lashes - Style 19 ▲



3D Lashes - Style 26 ▲



3D Lashes - Style 06 ▲



3D Lashes - Style 13 ▲



3D Lashes - Style 20 ▲



3D Lashes - Style 27 ▲



3D Lashes - Style 08 ▲



3D Lashes - Style 16 ▲



3D Lashes - Style 22 ▲



3D Lashes - Style 30 ▲

COSMETOLOGY

EYELASHES

CT-957

5D Natural Eyelashes – Complete Set

Features:

- Classic, fully laden style, for an ample, regular lash look.
- Made of lightweight faux mink lashes.
- The clear band lashes make your eyelashes look more beautiful, natural and attractive.
- Lash glue and application and care instructions included.



COSMETOLOGY

EYELASHES

Or Bleu® Stand - STOB-P1-50C



COSMETOLOGY

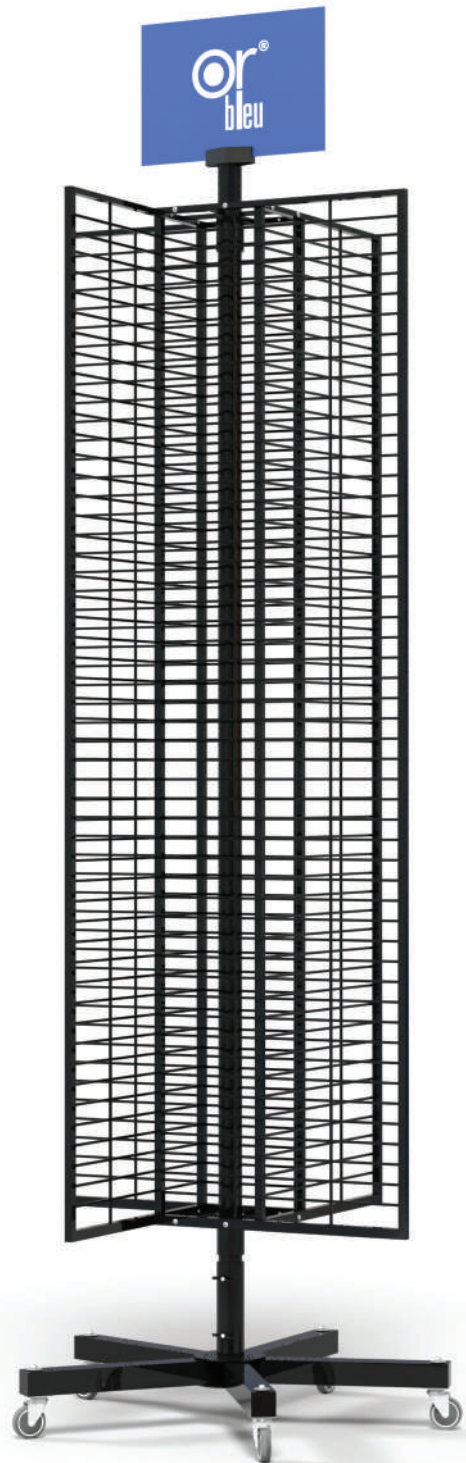
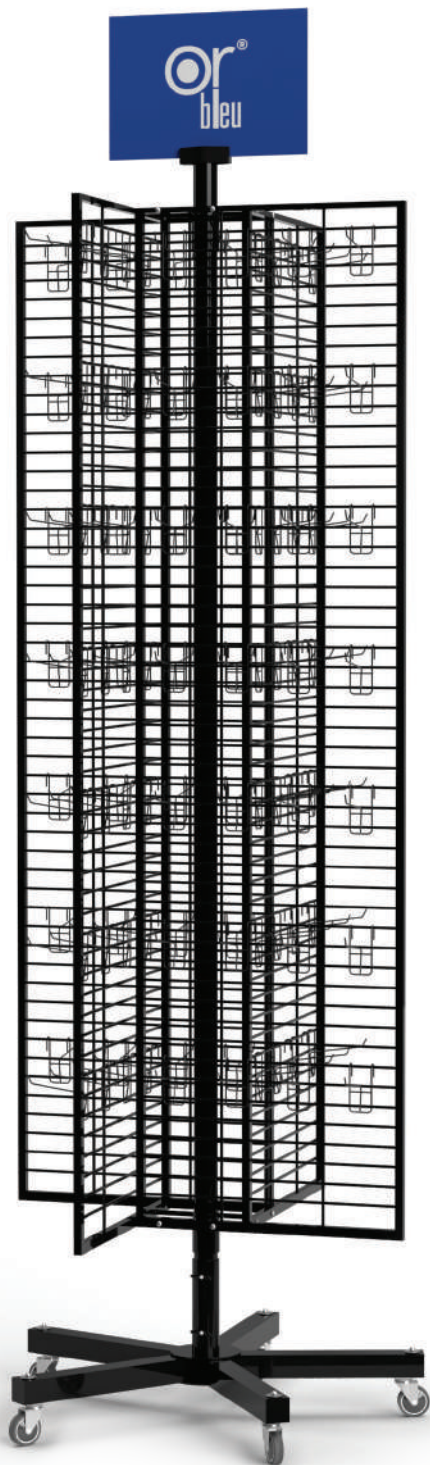
PRODUCT STANDS



COSMETOLOGY

PRODUCT STANDS

Or Bleu® Iron Stand – 4 Sides



COSMETOLOGY

PRODUCT STANDS



COSMETOLOGY TOOLS



www.synergyprosales.com