

LILI

MANUFACTURE YEAR

2021

ENVIRONMENT

Indoor

CATEGORY

Seating

MATERIAL

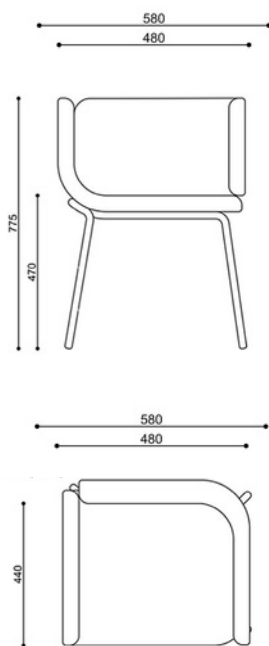
Mdf-Cloth Powder-Coated Steel

Care:

Usesteam cleaner

Dimension

44.58.77 Cm



LILI's concept is based on the core idea of two bent pieces merging and making unity as the chair body. The design of curves and shapes of the two pieces and the chair legs are aimed at emphasizing this core idea.

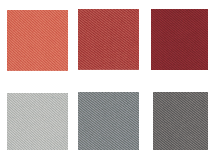
base

metal



Uphostery

fabric



BLOOST