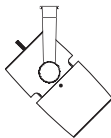


ARTY

ACCENT



Ljusdesign

S. Skeppsbron 4
802 80 Gävle
Sweden

info@ljusdesign.se
ljusdesign.se
+46 26 66 15 00

Arty Accent (formerly PAR) is a medium-sized spotlight capable of handling most lighting situations. It's currently available for four different lighting systems.

Be sure you also read the instructions for your chosen lighting system as there are additional steps you need to take to get it set up.



Safety Instructions

Location. IP20. Only for indoor use. Do not install in wet or damp locations. Do not install the fixture where exposed bare connectors can be shorted or contact any conductive/combustible materials. Keep combustible material away from the fixture and lens.

Driver. Arty comes in 230V, 12V DC and Constant Current versions, please always refer to the label affixed to the luminaire for the recommended driver.

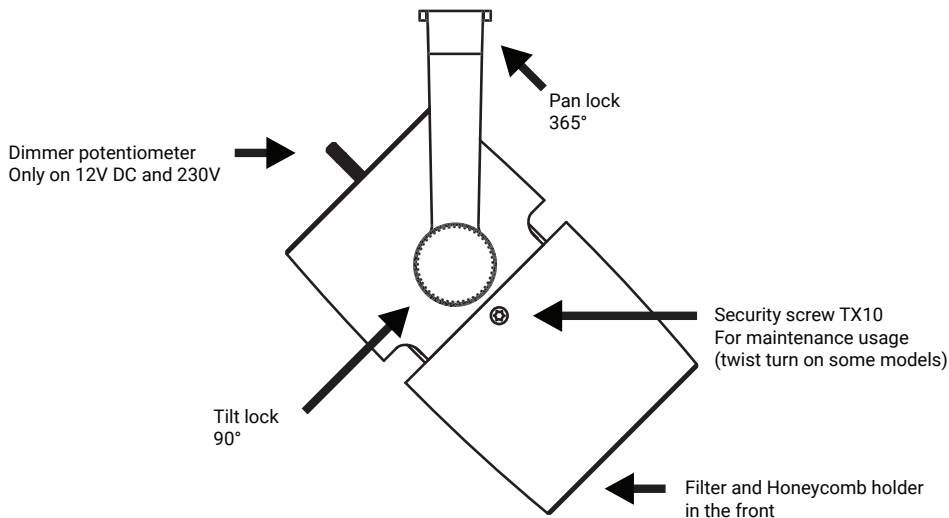
Constant Current note. Do not connect or disconnect fixtures under load.

230V and 12V DC note. Fixture has built-in dimmer. Not compatible with external or mains dimmer.

Technical

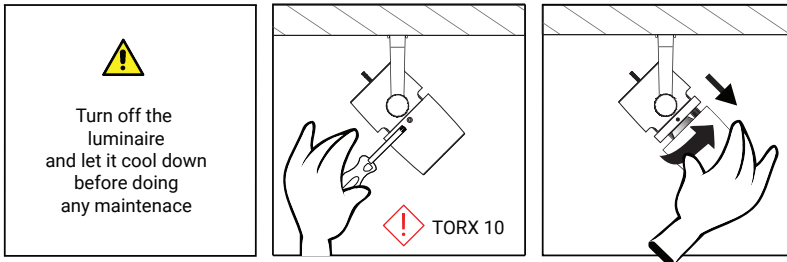
Article numbers	ARTACC*
Material	Aluminum Steel Polycarbonate
Finish	Grey (RAL 7040) Black (RAL 9005) White (RAL 9016)
Lighting systems	3 Phase Circuit Track LED Profile Pico Trac Mini Trac
Protection class	IP20
Beam angles	Interchangable
Swivels	>365°
Tilts	>90°
Accessories	Honeycomb Ø40 mm Filter Ø40 mm

Arty Accent Features Overview



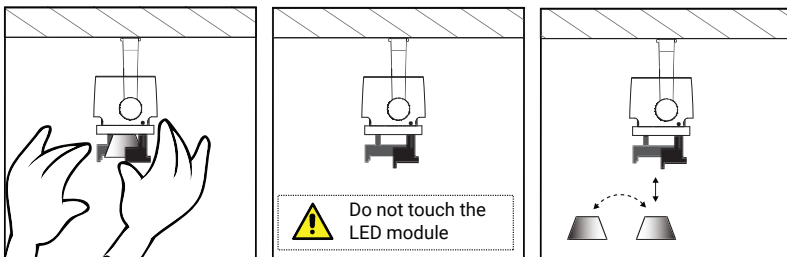
Maintenance

Unscrew the security screw on the front. Twist and pull to get off the front piece.



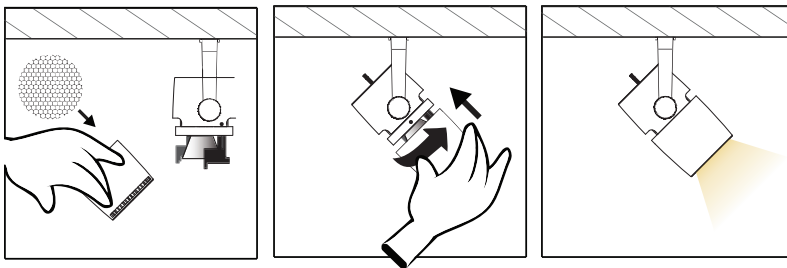
Lens swap

Gently open the lens holder whilst removing the lens with the other hand. Carefully snap the new lens into place.



Honeycomb louvre attachment

Carefully place the louvre from the inside at the very front of the front piece until it snaps.



Filter attachment

Place the filter into the slot. Make sure the entire filter ends up in the groove on both sides.

