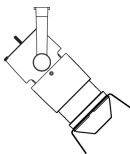


# ARTY



## ZOOM



Ljusdesign

S. Skeppsbron 4  
802 80 Gävle  
Sweden

info@ljusdesign.se  
ljusdesign.se  
+46 26 66 15 00

Arty Zoom is a luminaire with zoom function. The lens is frosted and creates a nice diffused light. It's currently available for four different lighting systems.

Be sure you also read the instructions for your chosen lighting system as there are additional steps you need to take to get it set up.



### Safety Instructions

**Location.** IP20. Only for indoor use. Do not install in wet or damp locations. Do not install the fixture where exposed bare connectors can be shorted or contact any conductive/combustible materials. Keep combustible material away from the fixture and lens.

**Driver.** Arty comes in 230V, 12V DC and Constant Current versions, please always refer to the label affixed to the luminaire for the recommended driver.

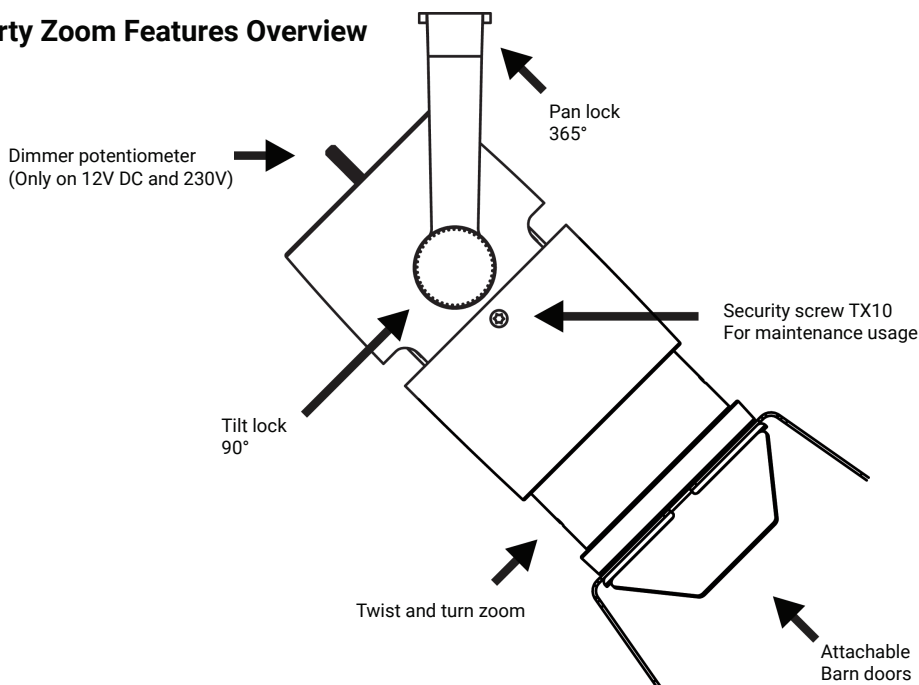
**Constant Current note.** Do not connect or disconnect fixtures under load.

**230V and 12V DC note.** Fixture has built-in dimmer. Not compatible with external or mains dimmer.

### Technical

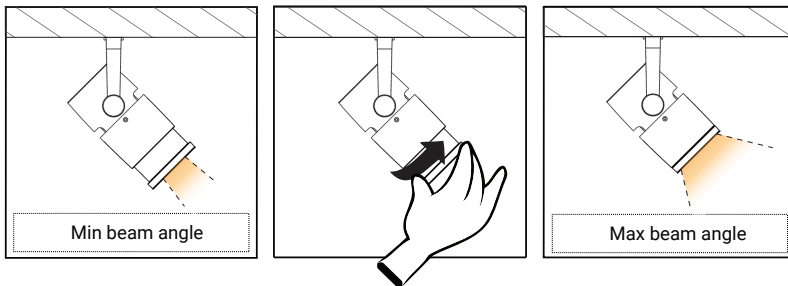
Article numbers	ARTZOOM*
Material	Aluminum Steel Glass lens
Finish	Grey (RAL 7040) Black (RAL 9005) White (RAL 9016)
Lighting systems	3 phase circuit track Pico Trac Mini Trac LED Profile
Protection class	IP20
Power consumption	6W/8W/10W
Beam angle	7-45°
Swivels	>365°
Tilts	>90°
Accessories	Filters

### Arty Zoom Features Overview



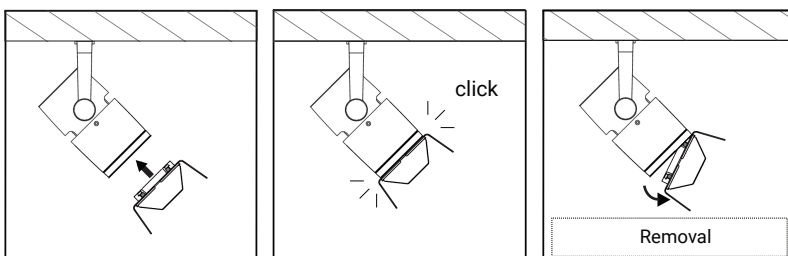
## Zoom

Simply twist and turn the front to steplessly adjust the beam angle.



## Barn door attachment

Push to snap it into place. Pull out one side to remove.



## Filter attachment

Pinch the filter together. Make sure the filter ends up in the groove on both sides.

