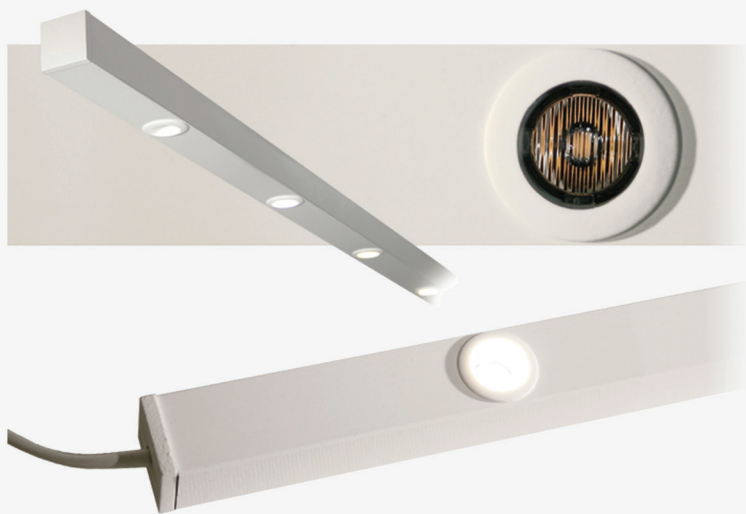


gekko LINEAR

A linear lighting solution



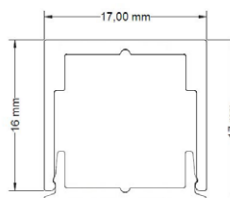
- Any length
- Any color temperature
- Any beam angle
- Alternative mounting options

Gekko Linear is a highly customizable fixture. Gekko is developed using the latest chip technology and integrated lenses.

The principle for Gekko Linear is easy - You specify the length, beam angle and color temperature to create a seamless linear luminaire.

TECHNICAL SPECIFICATION

Material	Extruded aluminum Lens made of polycarbonate
Finish	Grey (RAL 7040) Black (RAL 9005) White (RAL 9016)
Protection class	IP20
Operating voltage	Vf=3V
Current	Max 700 mA
Power consumption	2,1W per module
CRI	90
Color temperature	2200K/2700K/3000K/4000K
Beam angles	Narrow Medium Wide Very Wide Elliptical



GEKKO LINEAR

When ordering Gekko Linear, the following must always be stated.

Length of fixture:	100–3000 mm
Coating of luminaire:	Grey, black, white
Number of LED modules:	1–18 pcs per feed
Number of feeds:	Minimum 1
Lens:	N, M, W, VW, E
Color temperature:	2200, 2700, 3000, 4000, 5700
Cable color	Grey, black, white
Cable length	Minimum 2m
Cable exit:	Gable, upwards, backwards
Classification:	IP20 or IP66

GEK-LIN	Gekko Linear Max 3m, IP 20	According to customer specifications
GEK-LIN-IP66	Gekko Linear Max 3m, IP 66	According to customer specifications

GEKKO MODULES

Gekko Linear is fitted with these modules.

2200K	GEK22-*	Gekko LED module 2200K	180lm, Vf=3V, 700mA, CRI 90
2700K	GEK27-*	Gekko LED module 2700K	180lm, Vf=3V, 700mA, CRI 90
3000K	GEK30-*	Gekko LED module 3000K	190lm, Vf=3V, 700mA, CRI 90
4000K	GEK40-*	Gekko LED module 4000K	200lm, Vf=3V, 700mA, CRI 90
5700K	GEK57-*	Gekko LED module 5700K	210lm, Vf=3V, 700mA, CRI 90

* N: Narrow M: Medium W: Wide VW: Very Wide E: Elliptical (48X19)