

neo Framer

A bright contour spotlight with advanced zoom lens system.



Ljusdesign

S. Skeppsbron 4
802 80 Gävle
SWEDEN

info@ljusdesign.se
ljusdesign.se
+46 26 66 15 00



Safety Instructions

Location. IP20. Only for indoor use. Do not install in wet or damp locations. Do not install the fixture where exposed bare connectors could short out or come into contact with any conductive/combustible material. Keep combustible material away from the fixture and lens.

Driver. Neo comes in 230V and constant current versions, please always refer to the label affixed to the luminaire for the recommended driver.

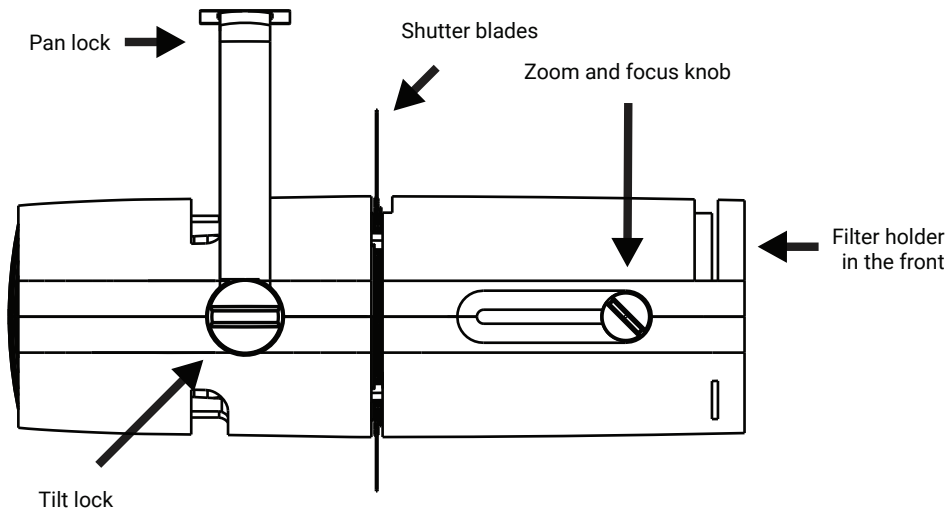
Constant current note. Do not connect or disconnect fixtures under load.

3 Phase Circuit Track. Fixture has built-in dimmer and/or wireless protocol. Not compatible with mains dimmer.

Technical

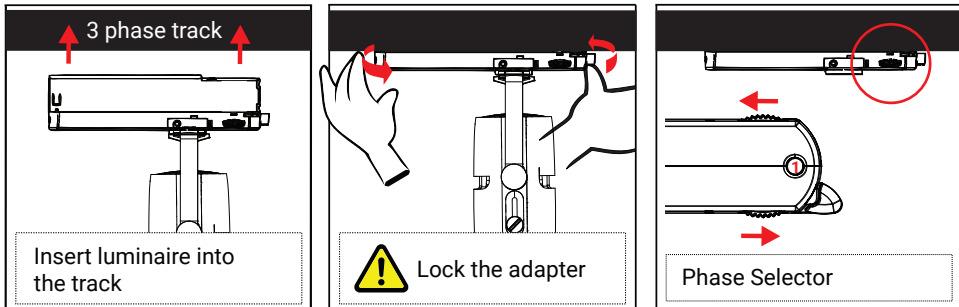
| | |
|-------------------|---|
| Article numbers | NEOFW*/NEOFN* |
| Materials | Die-cast Aluminum PC-ABS Glass lenses |
| Finish | Grey (RAL 7040) Black (RAL 9005) White (RAL 9016) |
| Lighting systems | 3 Phase Circuit Track |
| Protection class | IP20 |
| Power consumption | 24–26W |
| Beam angle NEOFN | 14–27° |
| Beam angle NEOFW | 20–45° |
| Swivels | >365° |
| Tilts | >90° |
| Gobo size | Ø37,5 mm |
| Filter size | 70x70 mm |

Neo Zoom Quick Overview



3 Phase Track Adapter

The adapters look slightly different and have various functions. Some have one lock, others have two. Please lock ALL locks before doing any other settings.



Specification

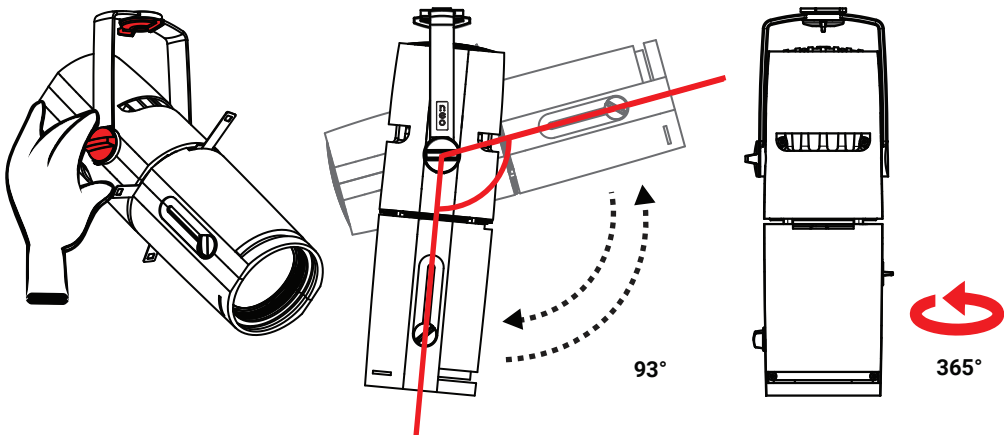
| Article number | Protocol | On-board Dimmer | External Control |
|----------------|----------|-----------------|---------------------------------|
| AL | Analog | Yes | No |
| AH | Analog | Yes | No |
| AHC | Casambi | No | Via Casambi app or product |
| AHX | DMX | Yes | Via Lumenradio CRMX |
| AHD | Dali | No | Via Dali |
| CCS | - | No | Via constant current LED driver |

Pan and tilt locking

Neo is equipped with a robust and reliable locking system. Pan and tilt locks make it possible to swivel and lock the unit in a fixed position.

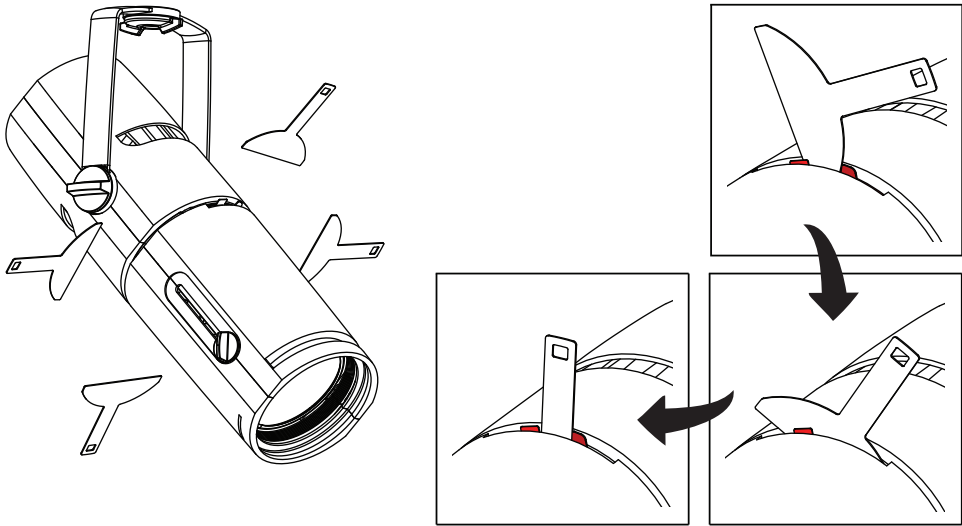
To adjust the setting

Loosen the fixture position by turning the knob counter clock-wise and adjust the position. Once you have finished positioning, turn the knob clock-wise until completely secured.



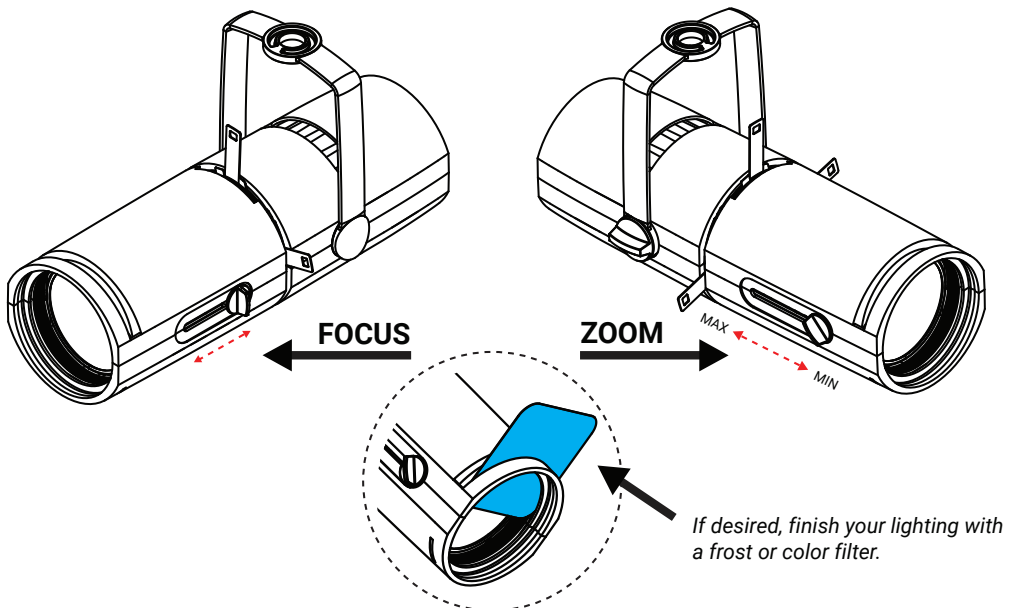
Shutter system

Use the four adjustable shutter blades to shape the light.
Adjust the zoom and focus to your liking.
Place the shutters between the guide plates as shown in the illustration.



Lighting design

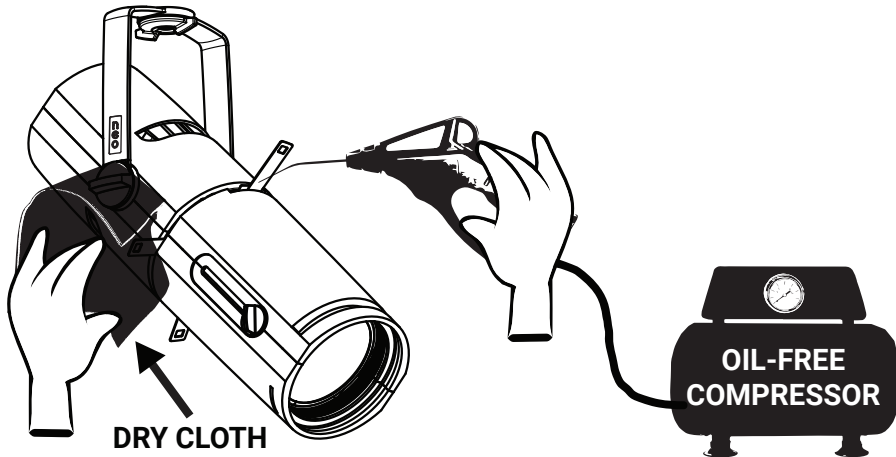
Move the front lens to adjust the beam angle.
Use the rear lens to adjust the focus/sharpness.



Cleaning and maintenance

1. Disconnect the power and wait for the luminaire to cool down.
2. Use dry soft cloths to clean the exterior.
3. Since the design of the fixtures is not air tight, dust particles might settle in on heat sink, lenses and LED, which will affect performance and light quality. We recommend the use of an oil-free air compressor to blow out dust every other year.

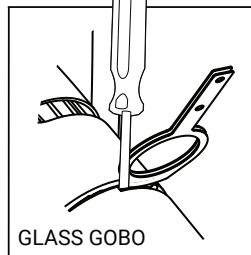
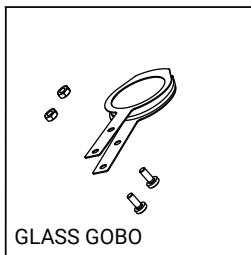
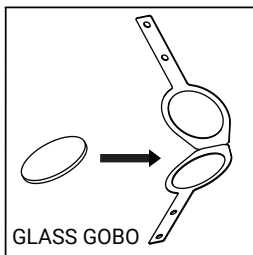
PLEASE NOTE: The light source contained in this luminaire cannot be changed by user, it may only be replaced by Ljusdesign AB or his maintenance agent.



Gobo projection

Neo Framer accomodates a gobo holder (optional) for E-size (37.5 mm) gobos.

1. Insert the gobo pattern into the gobo holder.
2. Place the gobo holder in the slot on the top side of the fixture.



Please note:
Glass gobos are very fragile.

Use, for example, a flat screwdriver to ease the spring when mounting.

Accessories and spare parts

| | | |
|---------------|---------------------------------------|-------|
| BL. **** | Gobo standard E-size | Metal |
| NEO92 | Neo Gobo Holder for E-size metal gobo | |
| NEO92X | Neo Gobo Holder for E-size glass gobo | |
| NEO98 | Neo Filter | |
| NEO FILTERKIT | Neo Filter kit | |

Please ask for current selection
Standard kit (L203, L206, #119)