

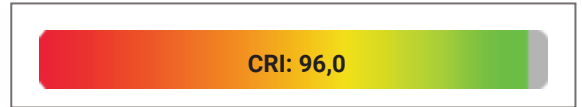
Dinkekey 450lm 2700K 90 CRI @ 500 mA

450lm, Vf=12V

Applies to following luminaires:

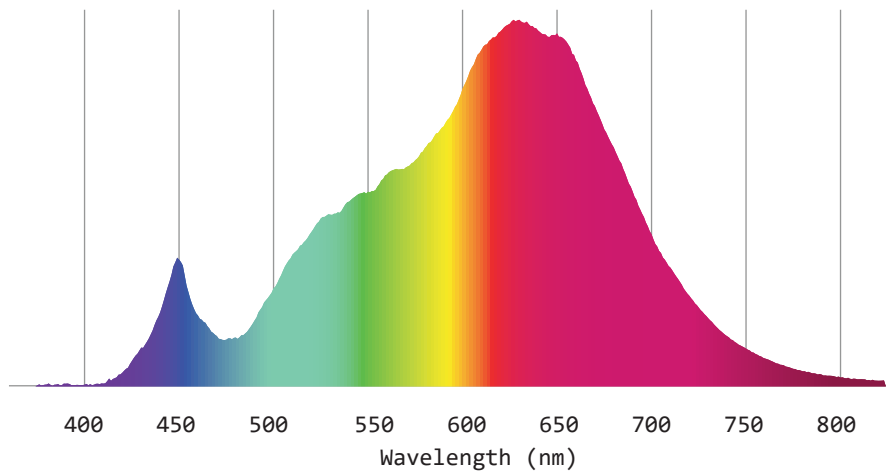
DIN27B-CCL-*

DIN27B-CCS-*



Color fidelity TM-30-15 Rf	92,2
Color Gamut TM-30-15 Rg	104,4
Color quality scale CQS	91,0
Color diviation from black body Δuv	-0,0014
Red component CRI R9	82,0

Light spectrum

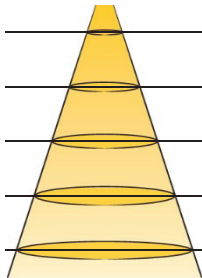


Photometrics and Optical data

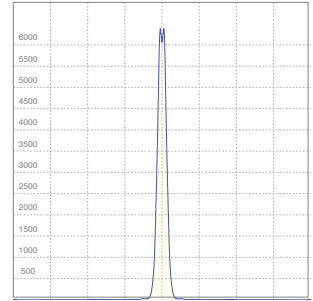
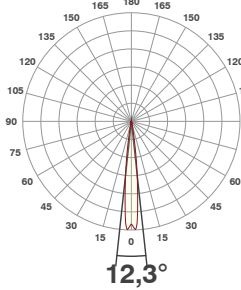
LENS:
VERY NARROW

Beam Angle 50% **12,3°**
Field angle 10% **20,5°**
Cut off angle **26,6°**

Lumen output: **354 lm**
Light efficiency: **59 lm/W**
Peak candela: **6365 cd**



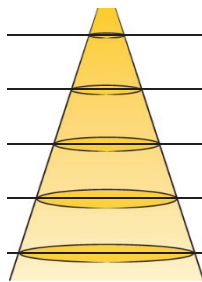
Distance	∅	lux
1	0,2	6084
2	0,4	1521
3	0,6	676
4	0,9	380
5	1,1	243



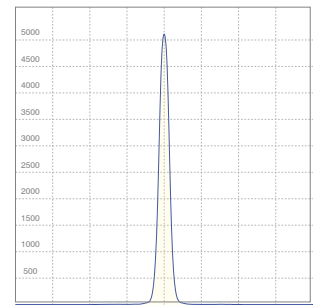
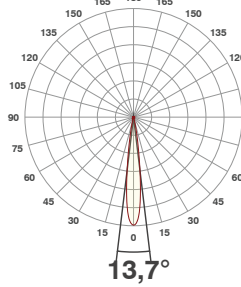
LENS:
NARROW (Default)

Beam Angle 50% **13,7°**
Field angle 10% **24°**
Cut off angle **31,5°**

Lumen output: **356 lm**
Light efficiency: **60 lm/W**
Peak candela: **5109 cd**



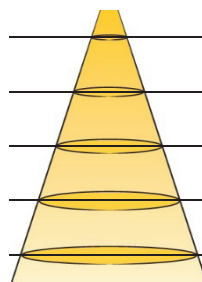
Distance	∅	lux
1	0,2	5109
2	0,5	1277
3	0,7	568
4	1	319
5	1,2	204



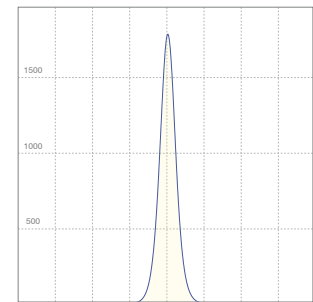
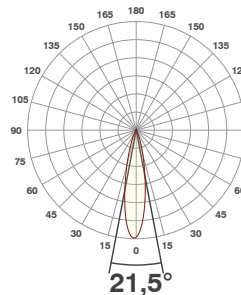
LENS:
MEDIUM

Beam Angle 50% **21,5°**
Field angle 10% **43,3°**
Cut off angle **60,4°**

Lumen output: **358 lm**
Light efficiency: **60 lm/W**
Peak candela: **1786 cd**



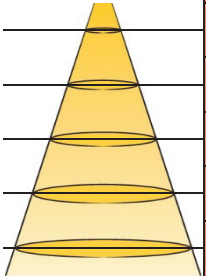
Distance	∅	lux
1	0,4	1760
2	0,8	440
3	1,1	196
4	1,5	110
5	1,9	70



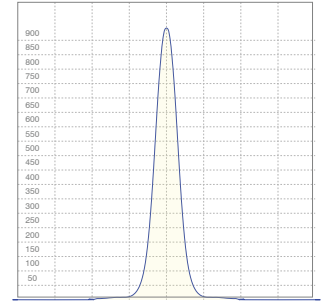
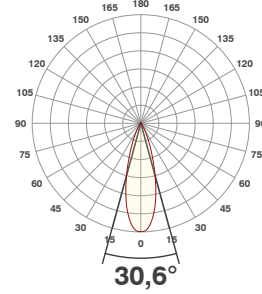
LENS:
WIDE

Beam Angle 50% **30,6°**
Field angle 10% **55,8°**
Cut off angle **76°**

Lumen output: **333 lm**
Light efficiency: **55 lm/W**
Peak candela: **938 cd**



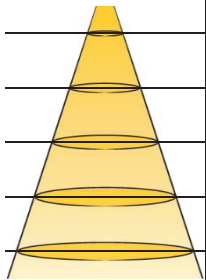
Distance	∅	lux
1	0,5	938
2	1,1	235
3	1,6	104
4	2,2	59
5	2,7	38



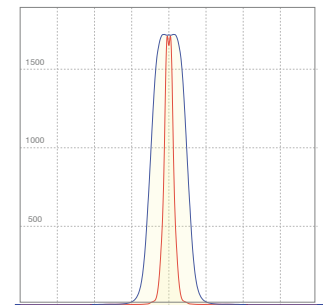
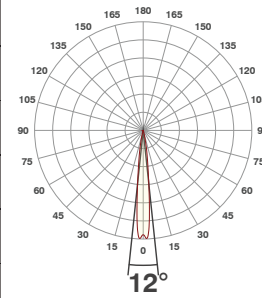
LENS:
ELLIPTICAL

Beam Angle 50% **45,8 x 12°**

Lumen output: **554 lm**
Light efficiency: **92 lm/W**
Peak candela: **1721 cd**



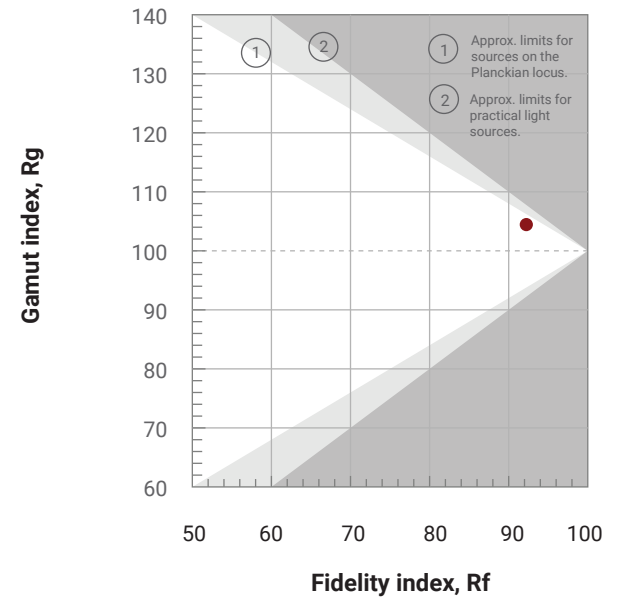
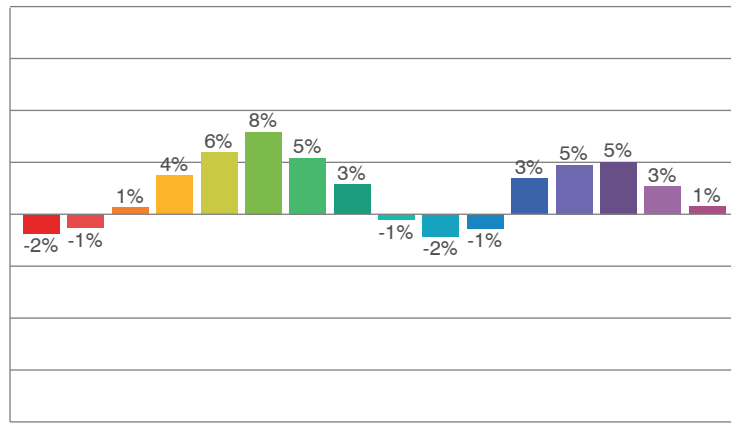
Distance	∅	lux
1	0,5	1688
2	1	422
3	1,5	188
4	2,1	106
5	2,6	68



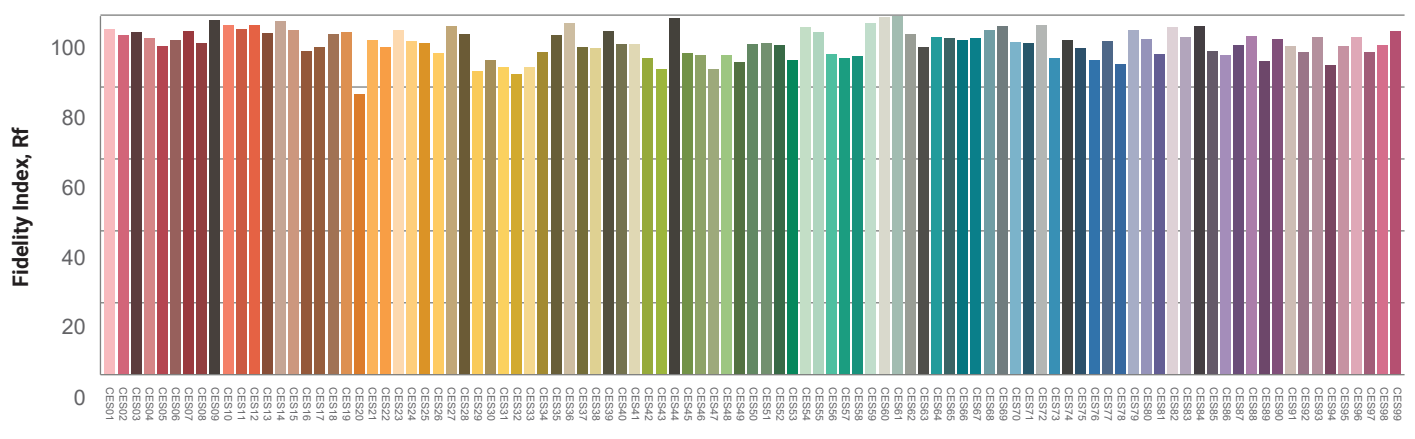
TM30 details

Rf 92,2
Fidelity index Rf

Rg 104,4
Gammut index Rg



Color Fidelity Sample

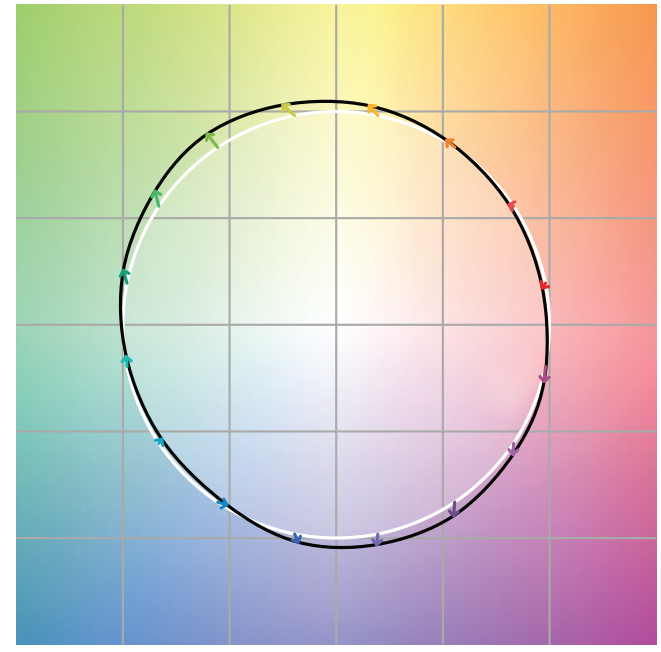


Color Distortion Graphic



Black areas within the white circle indicates desaturation.

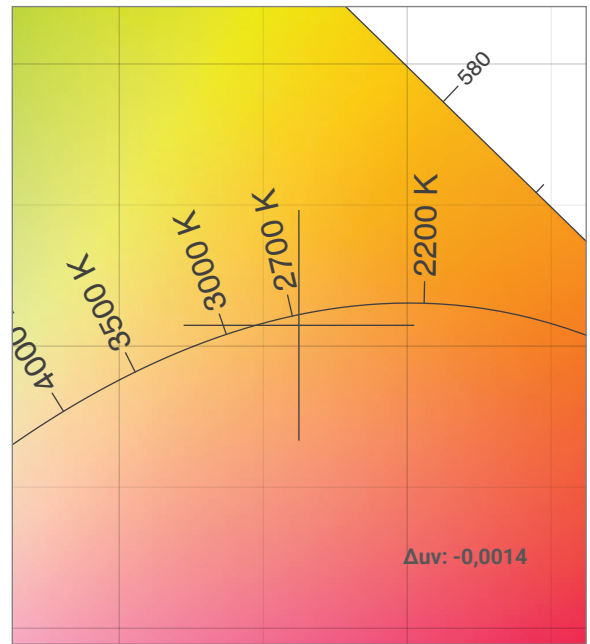
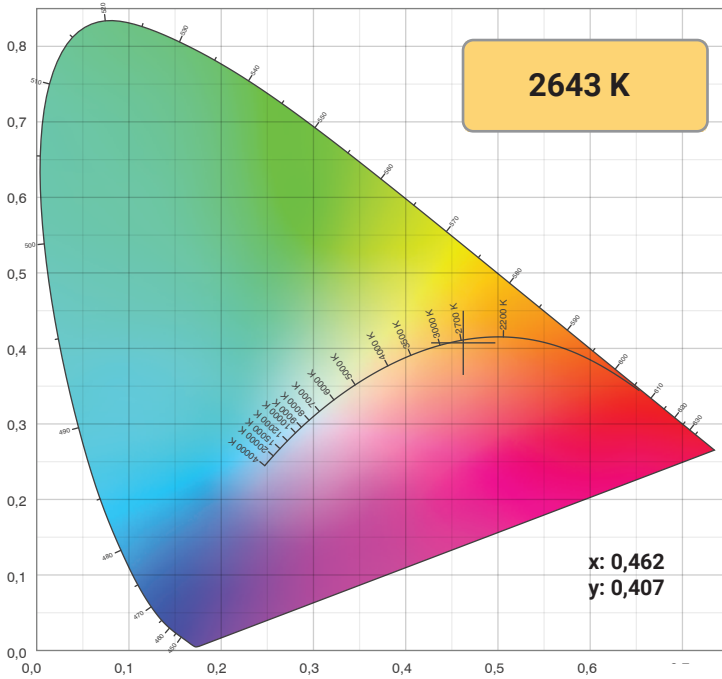
Color Vector Graphic



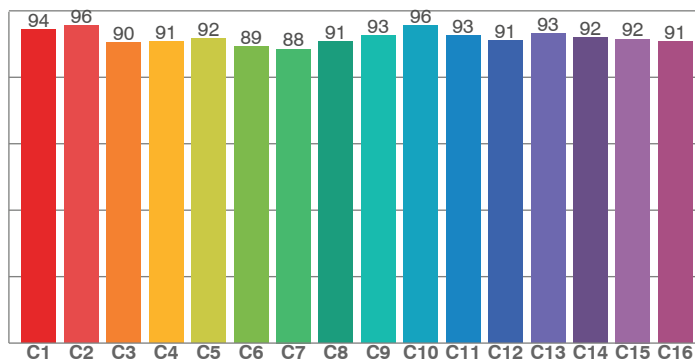
The arrows show how colors are distorted from their natural colors which lie on the white circle.

Color details

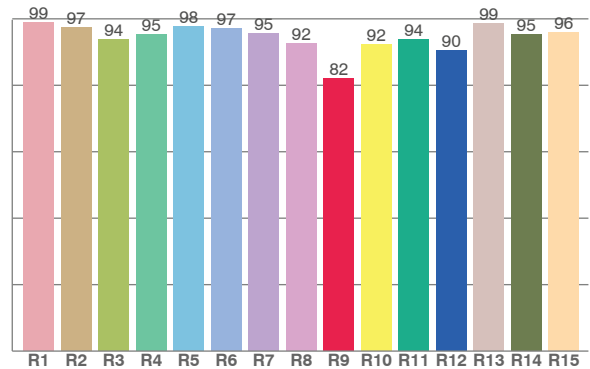
CIE 1931



TM30: 92,2



CRI: 96,0



CRI R values, only R1-R8 are used to calculate final CRI value

R1	R2	R3	R4	R5	R6	R7	R8	R9	R10	R11	R12	R13	R14	R15
98,8	97,4	93,8	95,2	97,7	97,1	95,5	92,5	82,0	92,4	93,9	90,5	98,6	95,3	96,0

TM30 C values, 16 binned values out of total of 99 C values

C1	C2	C3	C4	C5	C6	C7	C8	C9	C10	C11	C12	C13	C14	C15	C16
94,3	95,7	90,5	90,8	91,6	89,3	88,5	90,8	92,6	95,5	92,7	91,1	93,2	91,9	91,5	90,9

CQS Q values

Q1	Q2	Q3	Q4	Q5	Q6	Q7	Q8	Q9	Q10	Q11	Q12	Q13	Q14	Q15
88,6	96,4	89,5	92,6	90,5	85,8	86,3	92,1	96,0	92,5	93,9	94,7	95,3	92,6	90,9

CQS: 91,0

