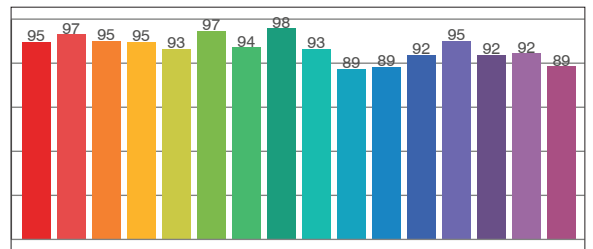
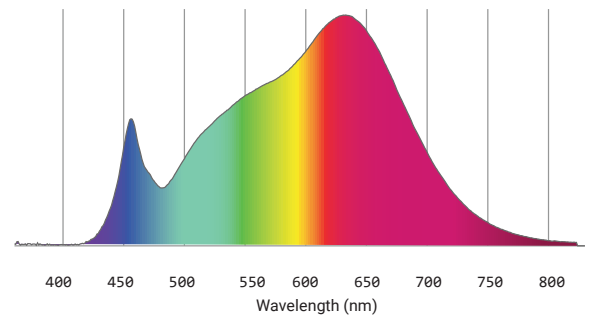
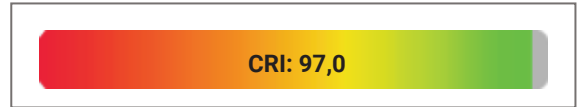


# Gadget L 3000K 95 CRI @ 600 mA

## Description

Applies to following luminaires:

- GADL30-AH-\*
- GADL30-AHX-\*
- GADL30-AHD-\*
- GADL30-AHC-\*
- GADL30-CCS-\*



Color fidelity <b>TM-30-15 Rf</b>	93,4
Color Gamut <b>TM-30-15 Rg</b>	100,1
Color quality scale <b>CQS</b>	94,0
Red component <b>CRI R9</b>	85,9

More color results on page 4-5

Measurement Conditions	
Number of C-planes Measured and Resolution	2 planes 180,0°
γ (gamma) -resolution	2,50°
Input Power to the Light Source	21,1 W
Input RMS Voltage and Current to the Light Source	35,2 V 0,600 A

## Photometrics and Optical data

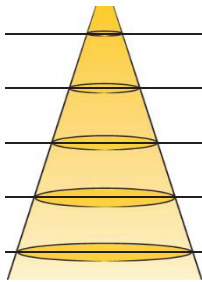
LENS:  
**Narrow  
(Default)**

Total Lumen  
Efficiency  
Peak intensity

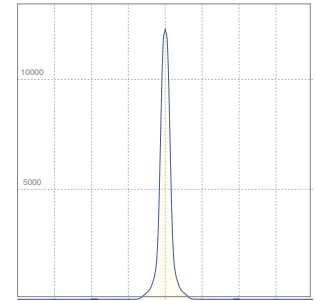
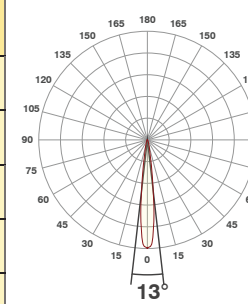
**927 lm**  
**44 lm/W**  
**12215 cd**

Beam Angle 50%  
Field angle 10%  
Cut off angle

**13°**  
**24,8°**  
**44,7°**



Distance	∅	lux
1	0,2	12215
2	0,5	3054
3	0,7	1357
4	0,9	763
5	1,1	489



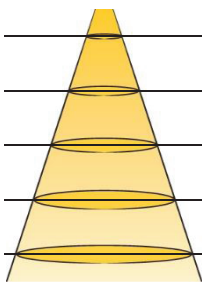
LENS:  
**Medium**

Total Lumen  
Efficiency  
Peak intensity

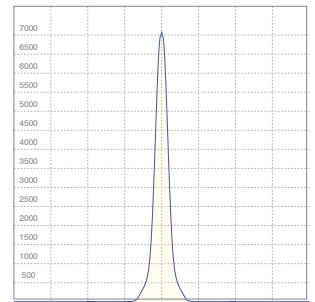
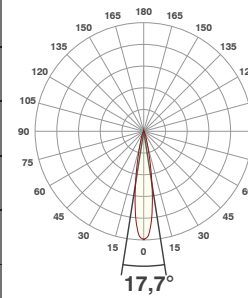
**893 lm**  
**42 lm/W**  
**7050 cd**

Beam Angle 50%  
Field angle 10%  
Cut off angle

**17,7°**  
**34,3°**  
**53,7°**



Distance	∅	lux
1	0,3	7050
2	0,6	1763
3	0,9	783
4	1,2	441
5	1,6	282



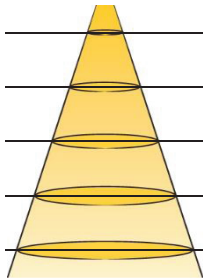
LENS:  
**Wide**

Total Lumen  
Efficiency  
Peak intensity

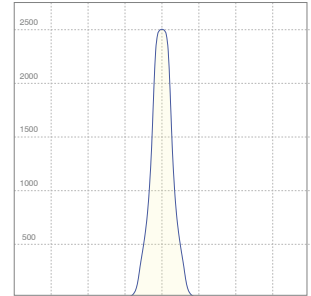
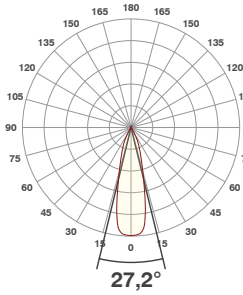
**719 lm**  
**34 lm/W**  
**2503 cd**

Beam Angle 50%  
Field angle 10%  
Cut off angle

**27,2°**  
**54,9°**  
**65,8°**



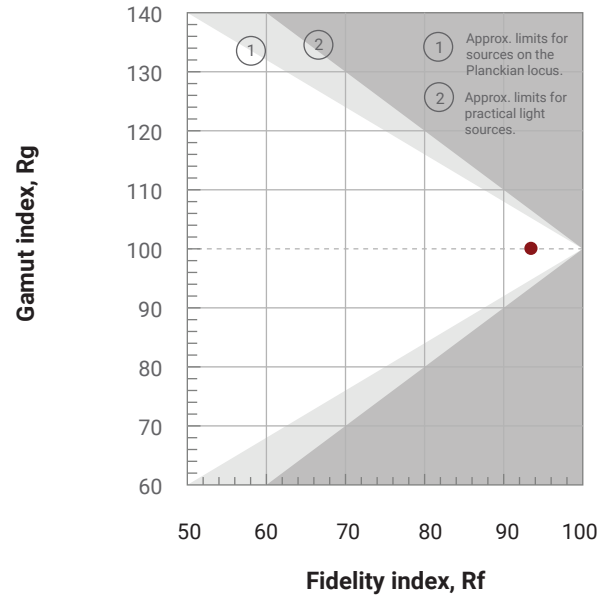
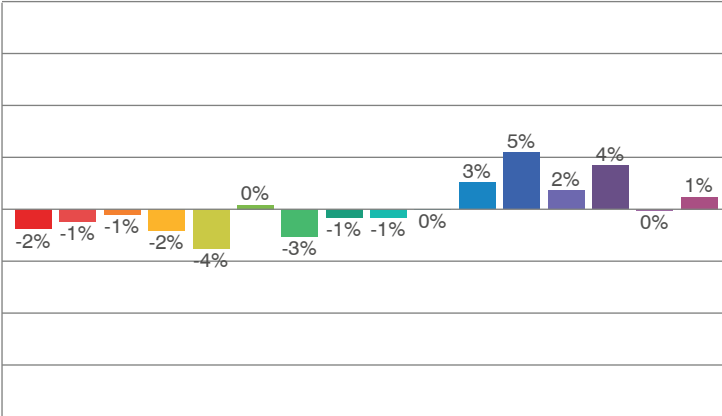
Distance	∅	lux
1	0,5	2503
2	1	626
3	1,5	278
4	1,9	156
5	2,4	100



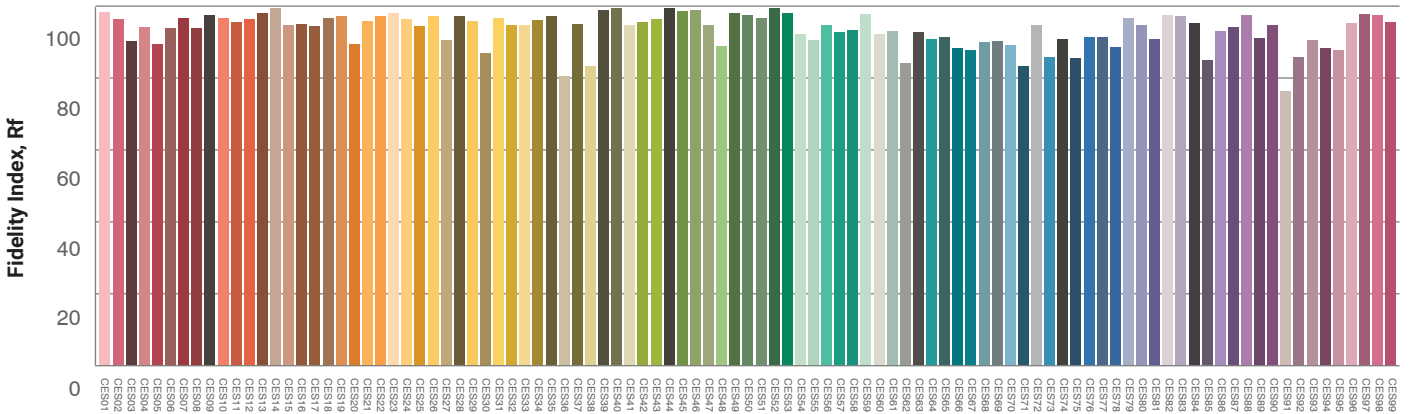
TM30 details

**Rf 93,4**  
Fidelity index Rf

**Rg 100,1**  
Gammut index Rg



Color Fidelity Sample

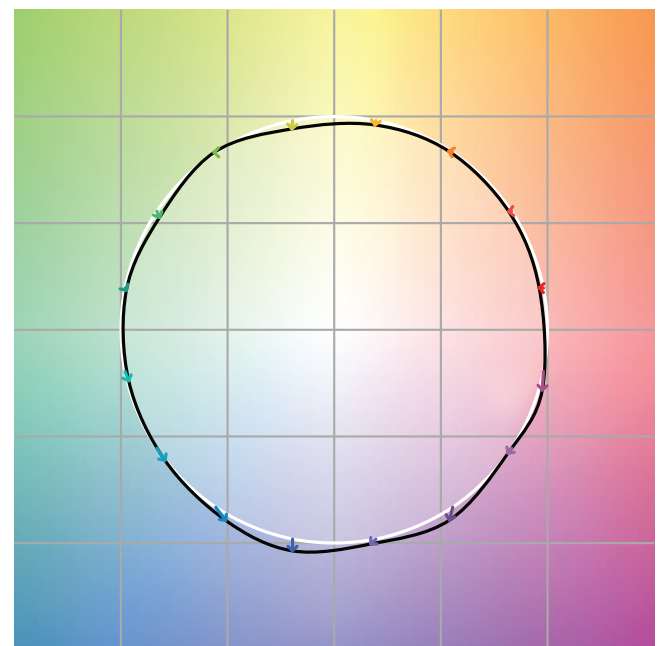


Color Distortion Graph



Black areas within the white circle indicates desaturation.

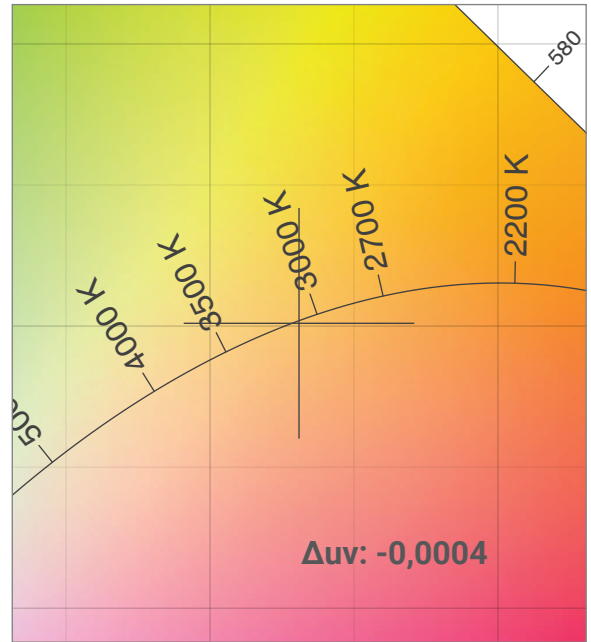
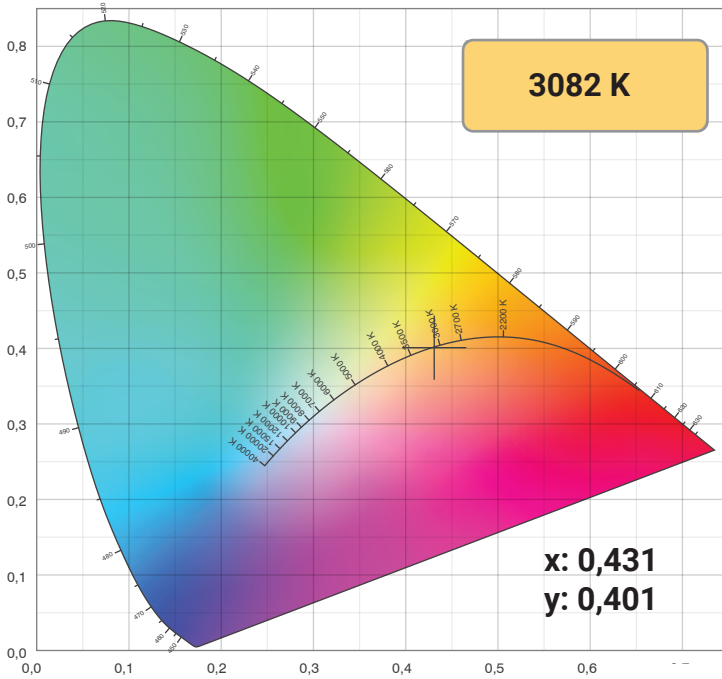
Color Vector Graphic



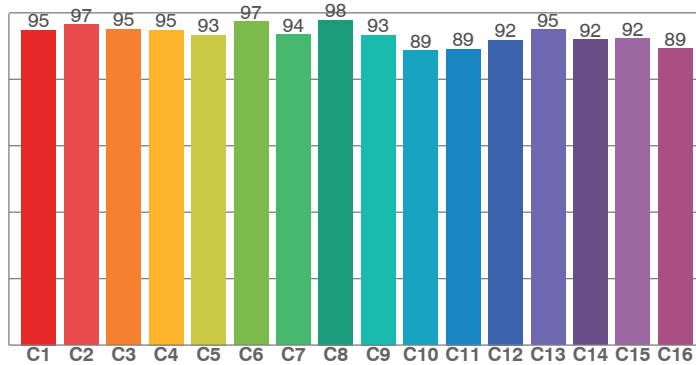
The arrows show how colors are distorted from their natural colors which lie on the white circle.

## Color details

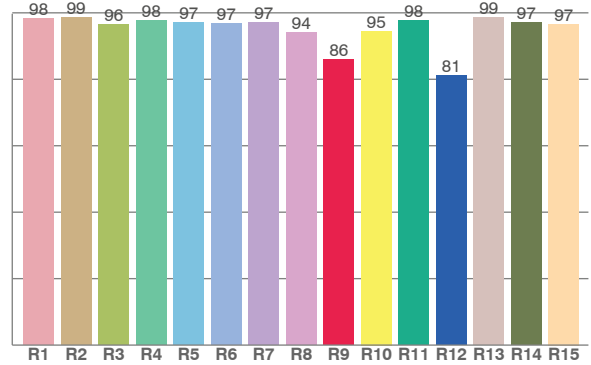
### CIE 1931



### TM30: 93,4



### CRI: 97,0



CRI R values, only R1-R8 are used to calculate final CRI value

R1	R2	R3	R4	R5	R6	R7	R8	R9	R10	R11	R12	R13	R14	R15
98,2	98,5	96,4	97,8	97,0	96,8	97,2	94,1	85,9	94,5	97,8	81,1	98,5	97,1	96,6

TM30 C values, 16 binned values out of total of 99 C values

C1	C2	C3	C4	C5	C6	C7	C8	C9	C10	C11	C12	C13	C14	C15	C16
94,9	96,5	95,1	94,8	93,3	97,3	93,6	97,9	93,3	88,7	89,1	91,8	95,0	91,9	92,2	89,3

CQS Q values

Q1	Q2	Q3	Q4	Q5	Q6	Q7	Q8	Q9	Q10	Q11	Q12	Q13	Q14	Q15
93,3	96,9	90,1	89,7	93,1	95,3	94,1	95,6	97,2	95,7	95,8	96,5	96,9	94,7	94,4

### CQS: 94,0

