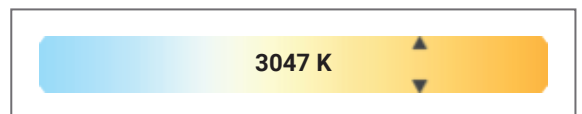
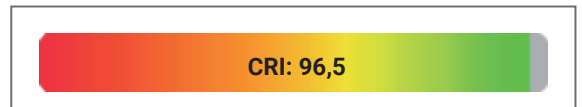


Neo Accent 3000K 95 CRI @ 600 mA

Applies to following luminaires:

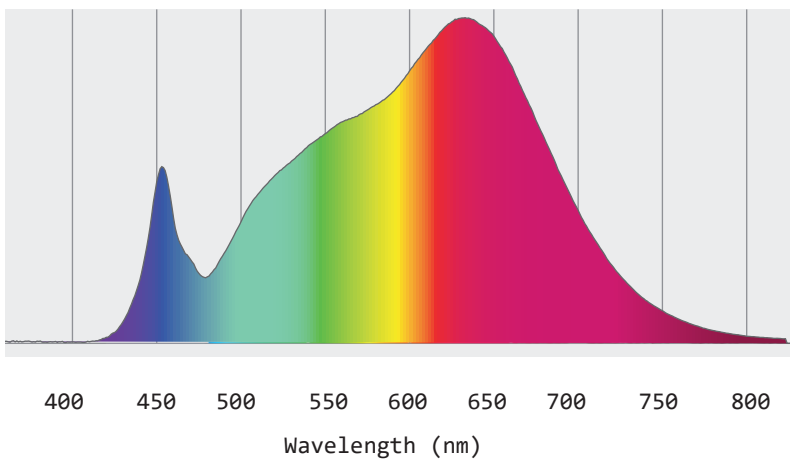
- NEOACC30C-AL-*
- NEOACC30C-AHX-*
- NEOACC30C-AHD-*
- NEOACC30C-AHC-*
- NEOACC30C-CCS-*



Color fidelity TM-30-15 Rf	94,0
Color Gamut TM-30-15 Rg	101,2
Color quality scale CQS	93,9
Red component CRI R9	85,6

More color results on page 4-5

Light spectrum

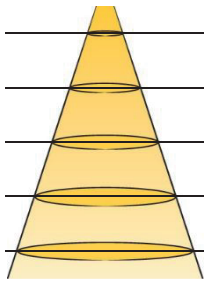


Photometrics and Optical data

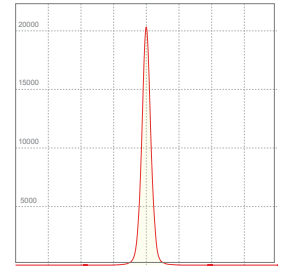
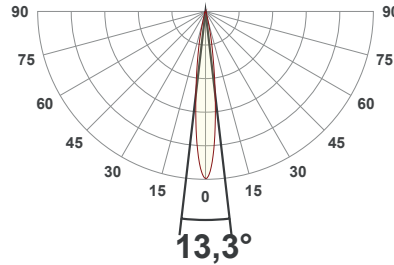
LENS:
REAL SPOT (RS)

Total Lumen **1545 lm**
Efficiency **73 lm/W**
Peak intensity **20291 cd**

Beam Angle 50% **13,3°**
Field angle 10% **26,9°**
Cut off angle **37°**



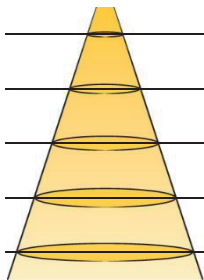
Distance	∅	lux
1	0,2	20242
2	0,5	5060
3	0,7	2249
4	0,9	1265
5	1,2	810



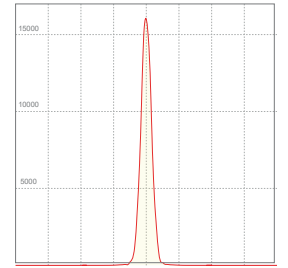
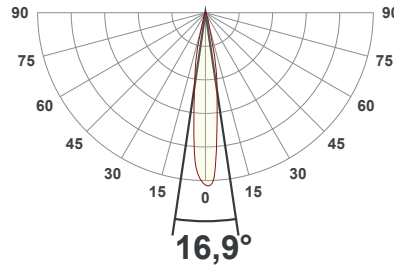
LENS:
SMOOTH SPOT (SS)

Total Lumen **1646 lm**
Efficiency **77 lm/W**
Peak intensity **15447 cd**

Beam Angle 50% **16,9°**
Field angle 10% **31,5°**
Cut off angle **43,1°**



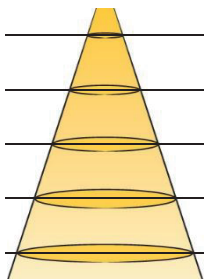
Distance	∅	lux
1	0,3	14891
2	0,6	3723
3	0,9	1655
4	1,2	931
5	1,5	596



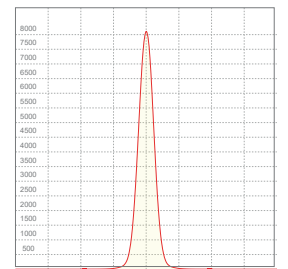
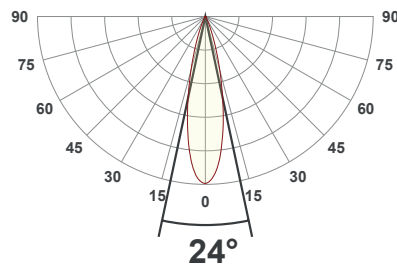
LENS:
MEDIUM (M)

Total Lumen **1664 lm**
Efficiency **78 lm/W**
Peak intensity **8106 cd**

Beam Angle 50% **24°**
Field angle 10% **43,7°**
Cut off angle **57,3°**



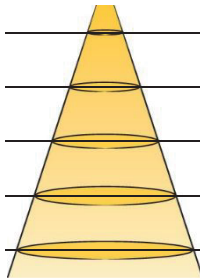
Distance	∅	lux
1	0,4	8081
2	0,8	2020
3	1,3	898
4	1,7	505
5	2,1	323



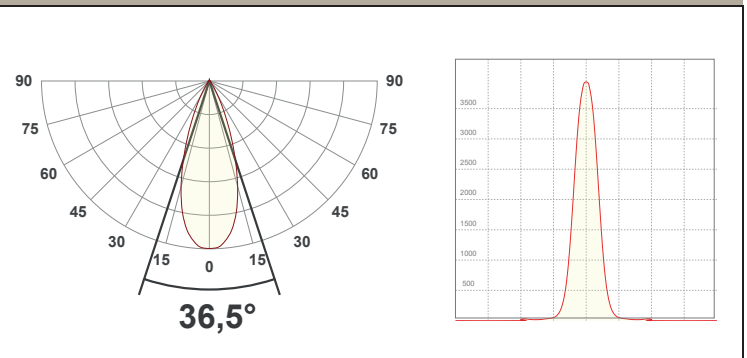
LENS:
WIDE (W)

Total Lumen **1717 lm**
Efficiency **81 lm/W**
Peak intensity **3923 cd**

Beam Angle 50% **36,5°**
Field angle 10% **60,8°**
Cut off angle **78,8°**



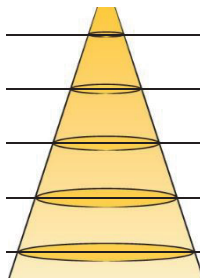
Distance	∅	lux
1	0,7	3923
2	1,3	981
3	2	436
4	2,6	245
5	3,3	157



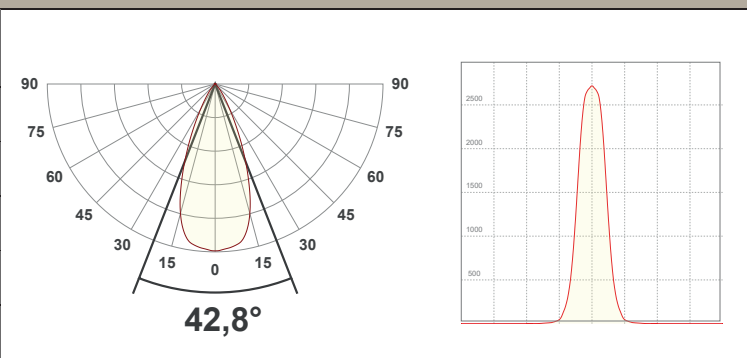
LENS:
VERY WIDE (WW)

Total Lumen **1491 lm**
Efficiency **70 lm/W**
Peak intensity **2716 cd**

Beam Angle 50% **42,8°**
Field angle 10% **68,2°**
Cut off angle **85,5°**



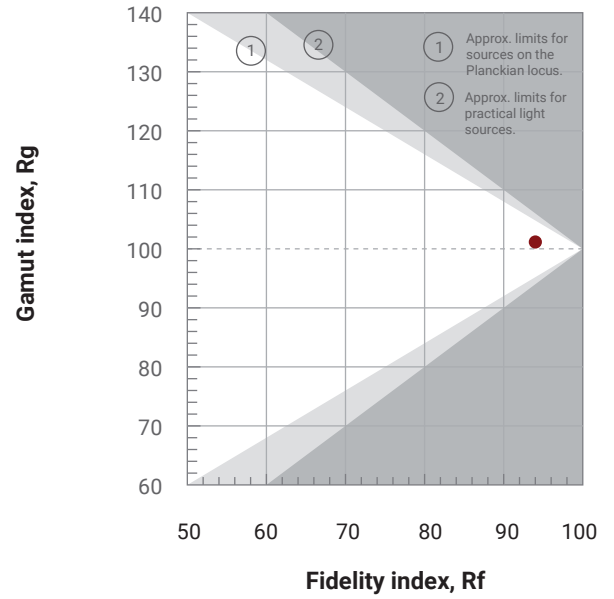
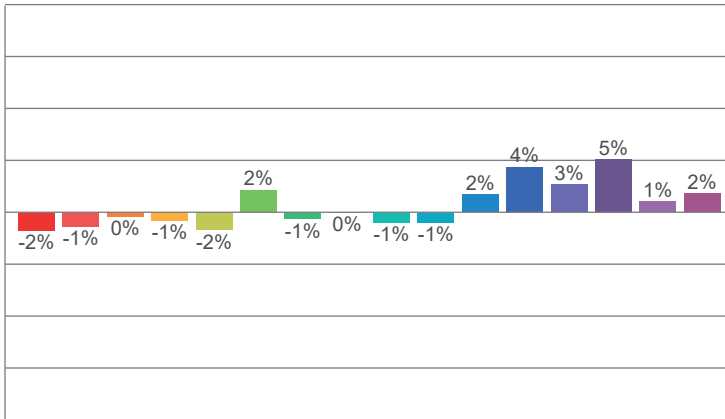
Distance	∅	lux
1	0,8	2716
2	1,6	679
3	2,4	302
4	3,1	170
5	3,9	109



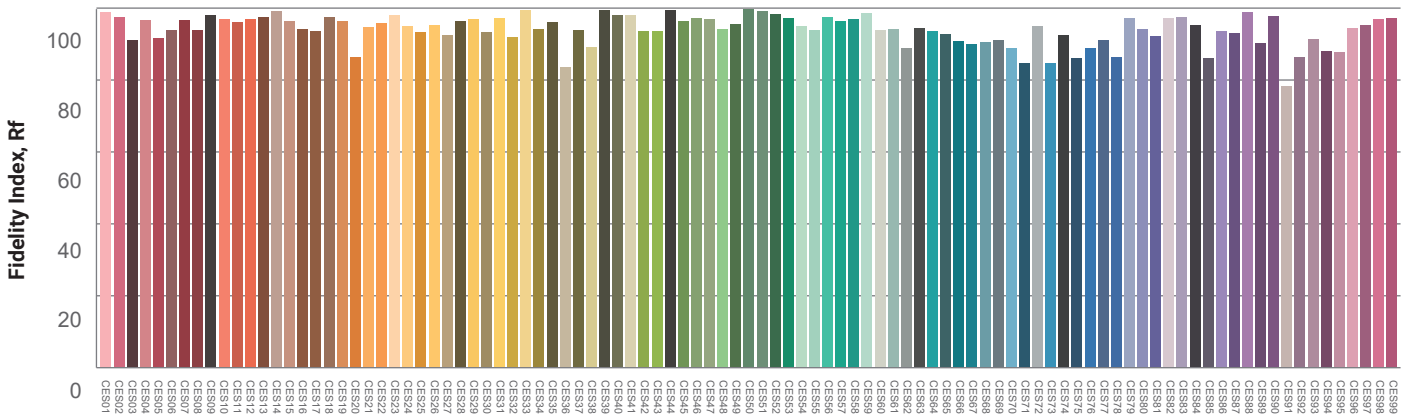
TM30 details

Rf 94,0
Fidelity index Rf

Rg 101,2
Gammut index Rg



Color Fidelity Sample

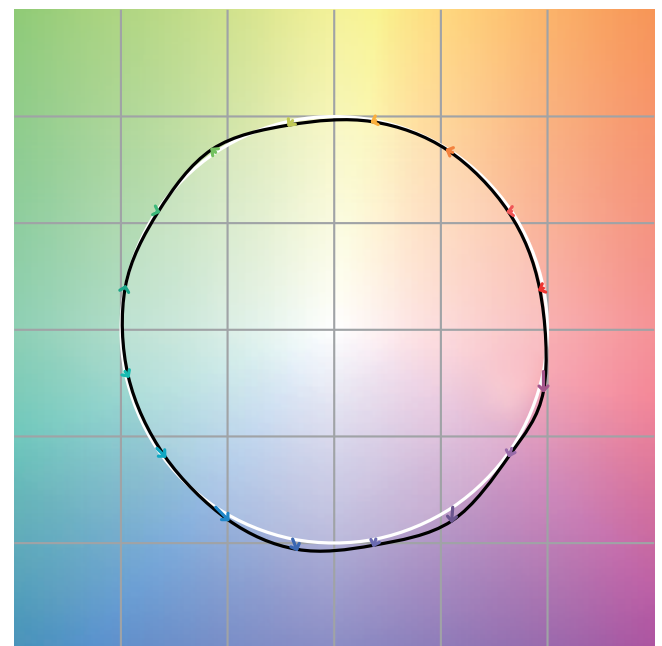


Color Distortion Graphic



Black areas within the white circle indicates desaturation.

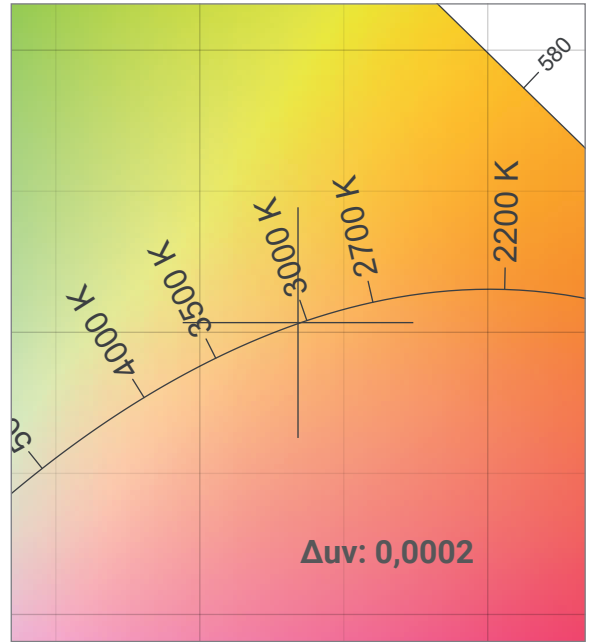
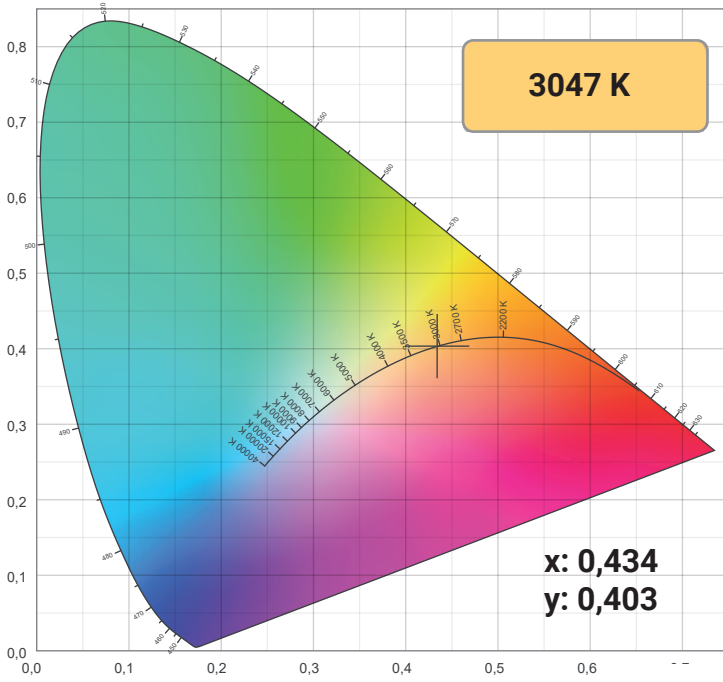
Color Vector Graphic



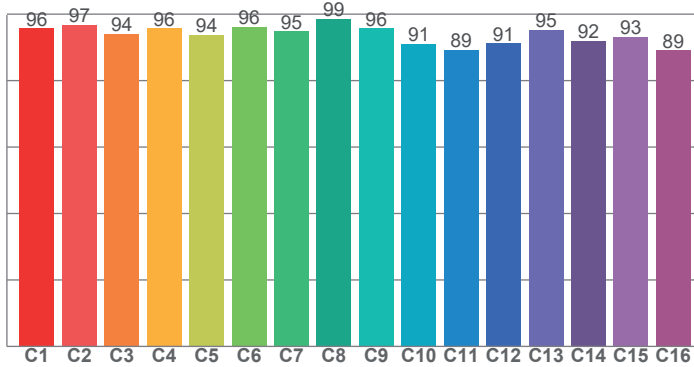
The arrows show how colors are distorted from their natural colors which lie on the white circle.

Color details

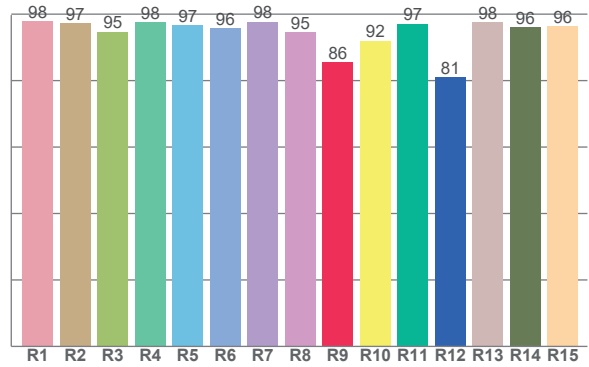
CIE 1931



TM30: 94,0



CRI: 96,5



CRI R values, only R1-R8 are used to calculate final CRI value

R1	R2	R3	R4	R5	R6	R7	R8	R9	R10	R11	R12	R13	R14	R15
97,8	97,3	94,7	97,6	96,7	95,7	97,7	94,6	85,6	92,0	97,1	81,0	97,6	96,1	96,3

TM30 C values, 16 binned values out of total of 99 C values

C1	C2	C3	C4	C5	C6	C7	C8	C9	C10	C11	C12	C13	C14	C15	C16
95,7	96,7	94,1	95,7	93,8	96,2	94,8	98,6	95,8	91,1	89,2	91,2	95,3	91,9	93,2	89,1

CQS Q values

Q1	Q2	Q3	Q4	Q5	Q6	Q7	Q8	Q9	Q10	Q11	Q12	Q13	Q14	Q15
94,6	97,4	89,2	90,5	94,2	94,1	92,6	95,5	96,6	94,9	95,6	96,4	96,9	94,6	94,6

CQS: 93,9

