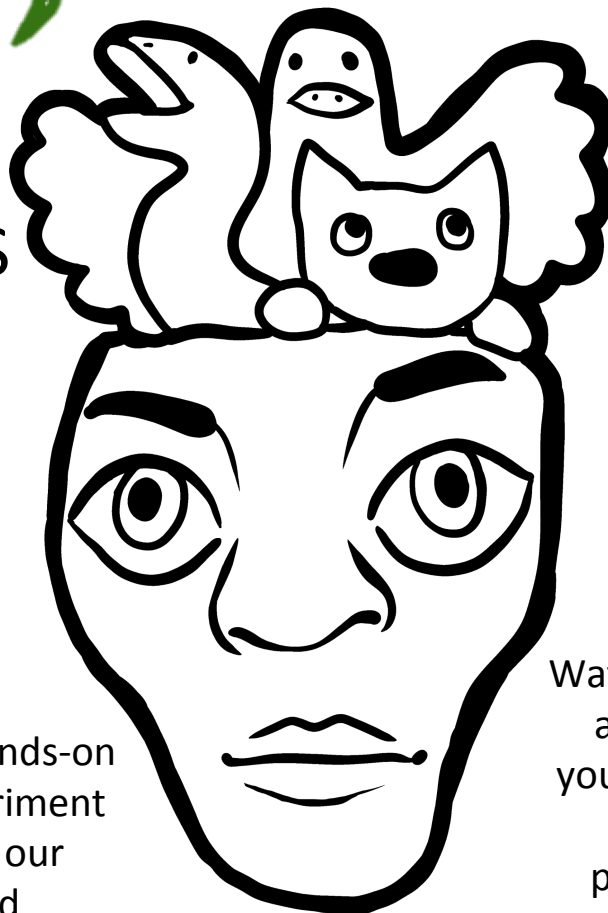


# ME, HUMAN

WHAT  
CONNECTS  
YOU TO  
OTHER  
ANIMALS?



HOW  
OLD IS  
YOUR  
BRAIN?

Me, Human is a hands-on live scientific experiment to investigate how our 500 million year-old vertebrate brain still controls some of our most human unique behaviours.

Watch your brain in action as you use your eyes, ears and hands to solve puzzles, test your grip strength, manipulate objects, recognise faces and produce speech.

## LIVE SCIENCE

London Science Museum

**2<sup>nd</sup> July – 30<sup>th</sup> September**

*\*Appropriate for all ages, groups and individuals*

## INFORMATION FOR SCHOOLS

# INFORMATION SHEET FOR:

## *Me, Human (Live Science)*



### ***What is the exhibit about?***

*Me, Human* is a scientific experiment to investigate how the organisation of our 500 million year-old vertebrate brain is still central to some of our most human unique behaviours. Researchers from Birkbeck, University of London and collaborating institutions are studying how we use the two halves of our brains to experience the world around us. Participants can watch their brain in action as they use their eyes, ears and hands to solve puzzles, test grip strength, manipulate objects, recognise faces and produce speech.

The exhibit runs short experimental activities, in the form of: computer games, board games, listening, speaking, holding tasks and surveys. Depending on which activities are chosen, participants may make judgments about faces and sounds, speak words into a microphone, place pegs into a board, and answer questions. By taking part, participants are helping scientists to understand how the human brain controls behaviour and also helping reveal our link to other animals.

### ***Who can take part in the study and what will happen during participation?***

Anyone is welcome to take part and the experience (e.g. timing, ability) can be tailored to the individual. Some elements are suitable from birth, but other activities are suitable for participants aged 4 years or older. There is no upper age limit and no exclusions for physical or cognitive impairments. If you decide to take part, you will participate in a set of the tasks like those described above. The total testing time should take no longer than 15 minutes.

### ***Are there risks involved and can a participant change their mind after starting?***

Participation is completely voluntary and you do not have to give a reason if you want to stop at any point. There are no risks to participation, nevertheless, should any participant find any task uncomfortable, testing will cease immediately. This project has been approved by the Ethics Committee of the Department of Psychological Sciences, Birkbeck, University of London

### ***How do I find out more about this study?***

Please visit our website: [www.mehuman.io](http://www.mehuman.io) and for regular updates of news and events, please follow us on twitter: @Me\_\_Human using #MeHuman. You can also contact the director of the Me, Human project Dr Gillian Forrester: [hello@mehuman.io](mailto:hello@mehuman.io). For Birkbeck's data protection policy please visit: <http://www.bbk.ac.uk/about-us/policies/privacy#7>.

### ***What do I need to do if I want my school to take part?***

Please contact the Science Museum to book in your group and mention Me, Human Live Science: [edbookings@sciencemuseum.ac.uk](mailto:edbookings@sciencemuseum.ac.uk) or call 020 7942 4777. All children under the age of 18 are required to have the consent of a parent or legal guardian in advance of participation. Consent forms can be found here: [www.mehuman.io/live-science/consent](http://www.mehuman.io/live-science/consent)