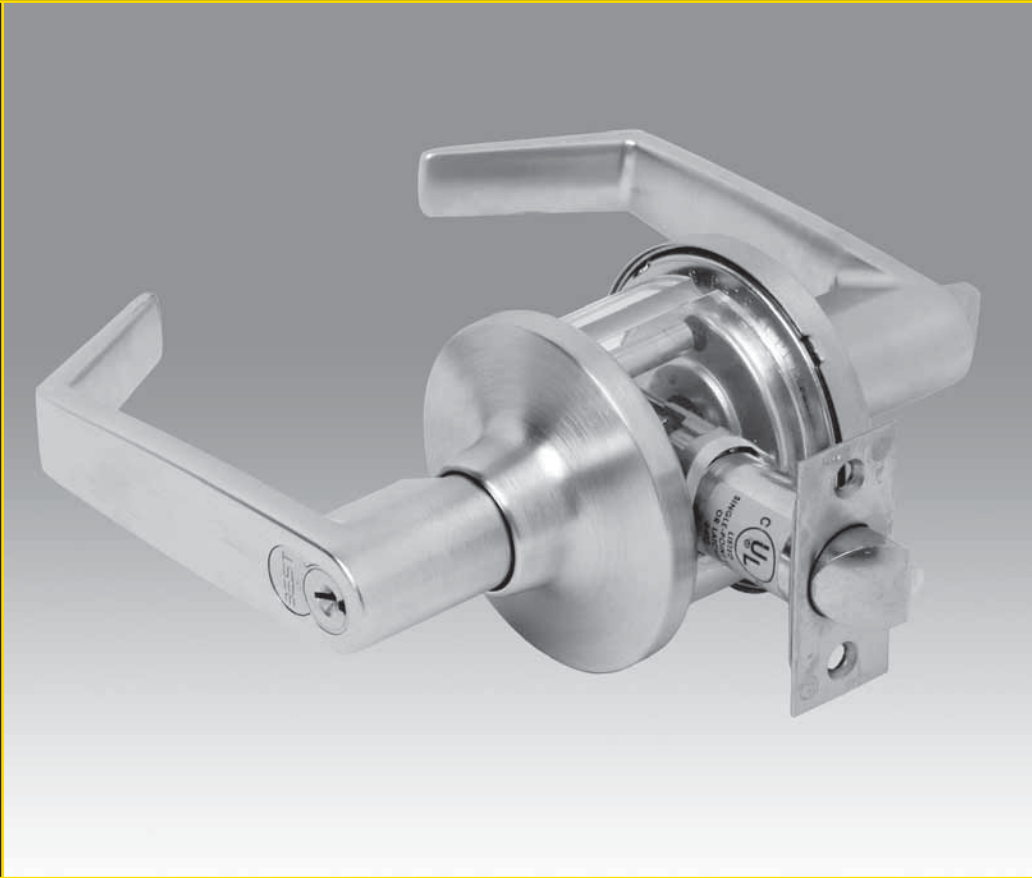


**STANLEY**<sup>®</sup>  
Security Solutions



# SK SERIES

LIGHT/MEDIUM DUTY COMMERCIAL



**FEATURES**

- Universal latch easily adjusts to fit both a 2 3/4" and 2 3/8" backset.
- 3" diameter rose with no exposed mounting screws.
- Builders Hardware Manufacturers Association:  
5K series – Listed by BHMA for A156.2, Series 4000, Grade 2.
- ADA–Americans With Disabilities Act:  
5K series – The design and operation of the BEST® cylindrical lock meets the intent of the standard for ANSI A117.1 section 404.2.6 and Illinois Accessibility Standard 400.310 (j)(8).
- Quick rekeying with BEST® interchangeable cores.
- Underwriters Laboratories®:  
5K series – Listed by Underwriters Laboratories for use on 3 Hr, A label for single (4' x 8') doors.
- Lockset reversible for either hand of door without removing keyed lever.



**5K Light/Medium Duty Lockset**

Products protected by one or more of the following patents:  
5,590,555 5,794,472



**SPECIFICATIONS**

**Backset:** Universal latch fits either 2 3/8" (60 mm) or 2 3/4" (70mm)

**Lock Chassis:** Tubular construction. Steel with stainless steel or brass cover

**Finishes:** 605 – bright brass, 612 – satin bronze, 613 – oxidized satin bronze, oil rubbed, 626 – satin chromium plated

**Core Housing:** Interchangeable core or key-in-knob

**Latch Bolt:** Universal 1/2" throw deadlocking latch fits both backsets. Faceplate: 2 1/4" x 1" x 5/32" with adapter for 1 1/8" wide faceplate applications

**Material:** Levers are zinc base, roses are brass or stainless steel, plated to match finish symbols. Latch face plates and strikes are stainless steel or steel. Lock chassis is steel with stainless steel or brass cover

**Levers:** 15 Lever – 5 1/8" long handle (129mm). Projection on door 2 5/8" (66mm).  
14 Lever – 4 3/4" long handle (119.2mm). Projection on door 2 5/8" (66mm).

**Mounting:** 2 1/8" diameter bore for lock housing. 1" diameter for latch tube

**Rose:** C – 3" diameter mounting screws concealed

**Strike:** STK (standard) – 2 3/4" x 1 1/8" with curved lip (ANSI 115.2 for 1 3/8" doors). S3 – 4 7/8" x 1 1/4" with curved lip (ANSI A115.2 for 1 3/4" doors). FL – 2 1/4" x 1 1/4" with curved lip and box and rounded corners.

**Door Thickness:** 1 3/8" to 1 3/4" (35mm to 44mm standard)

**HOW TO ORDER**

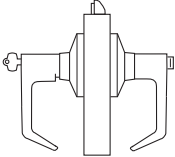
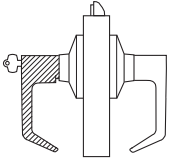
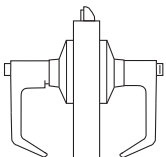
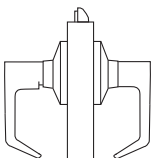
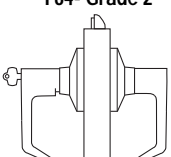
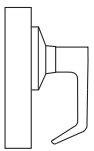
5K	7	A	15	C	STK	626	
Backset	Core Housing	Function Code	Lever	Trim Style	Strike Package	Standard Finishes	Options
5K– 2 3/8" or 2 3/4" adjustable backset	0– keyless 6– 6-pin non-IC cylinder 7– 7-pin IC housing accepts all Best cores	A– entrance D– storeroom L– privacy N– passage R– classroom 1DT– dummy trim***	14– curved return 15– contour angle retur	C– 3"	STK– standard S3– ANSI FL– full lip radius strike	605 612 613 626	0B*– non-IC zero-bitted KA*– non-IC keyed alike KD*– non-IC keyed different OEM**– non-IC OEM cylinder

\* Six-pin cylinder in Schlage "C" included with 0B, KA, and KD options. Must specify "6" for core housing

\*\* Cylinder not included with OEM option. Must specify "0" for core housing.

\*\*\* Through-bolt makes it difficult to install two dummy trims on the same door with perfect alignment. Double dummy trimming may result in imperfect alignment.



Function & Diag. (ANSI No.)	Description Latch operated by	Outside Lever		Inside Lever	
		Locked by	Unlocked by	Locked by	Unlocked by
<b>Single Keyed</b>					
<b>A-Entrance F81- Grade 2</b> 	<ul style="list-style-type: none"> <li>Rotating inside lever,</li> <li>Rotating outside lever—only when inside turn button is in unlocked position,</li> <li>Turning the key in the outside lever</li> </ul> <p>NOTE: Turn button must be manually rotated to unlock the outside lever.</p>	<ul style="list-style-type: none"> <li>Turning the inside button</li> <li>Turning the key in the outside lever</li> </ul>	<ul style="list-style-type: none"> <li>Turning the inside button</li> <li>Turning the key in the outside lever</li> </ul>	Cannot be locked	Always Unlocked
<b>D-Storeroom F86- Grade 2</b> 	<ul style="list-style-type: none"> <li>Turning key in the outside lever,</li> <li>Rotating the inside lever</li> </ul>	Always locked	Turning key in the outside lever	Cannot be locked	Always Unlocked
<b>L-Privacy F76- Grade 2</b> 	<ul style="list-style-type: none"> <li>Rotating inside lever,</li> <li>Rotating outside lever—only when inside turn button is in unlocked position.</li> </ul>	Turn inside button	<ul style="list-style-type: none"> <li>Rotating outside slotted button,</li> <li>Rotating the inside lever.</li> </ul>	Cannot be locked	Always Unlocked
<b>N-Passage F76- Grade 2</b> 	<ul style="list-style-type: none"> <li>Rotating inside lever,</li> <li>Rotating outside lever.</li> </ul>	Cannot be locked	Always unlocked	Cannot be locked	Always Unlocked
<b>R-Classroom F84- Grade 2</b> 	<ul style="list-style-type: none"> <li>Rotating inside lever,</li> <li>Turning the key in the outside lever when outside lever is locked,</li> <li>Rotating outside lever when not locked by key.</li> </ul>	Turning key in the outside lever	Turning key in the outside lever	Cannot be locked	Always Unlocked
<b>1DT-Single Dummy Trim Grade 2</b> 	<p>This is a single, surface-mounted lever for an inactive door or a non-latching door.</p> <p>NOTE: Through-bolt makes it difficult to install two dummy trims on the same door with perfect alignment. Double dummy trimming may result in imperfect alignment.</p>				

## CORMAX™ PATENTED KEYING SYSTEM

BEST® CORMAX™ is the premier patented keying system offered by Stanley Security Solutions. CORMAX will meet your needs for security, key control, and convenience. A simple solution with no compromising allowed.

CORMAX is the upgrade path for existing BEST Standard, Premium, and MX8 customers; and it is an essential element of non-residential access control as security administrators strive to eliminate the unauthorized duplication of keys.

CORMAX offers the following features and benefits:

- A long-term US utility patent that guarantees the extended useful life of the system through 2027.
- A second, independent locking mechanism that utilizes a patented set of built-in side pins to provide higher security.
- Several levels of geographical exclusivity, including national exclusivity, are available via the patented side pin feature.
- CORMAX cores and keys are available exclusively through Stanley sales offices. Key blanks are only sold to individuals authorized by the customer to ensure key blanks do not end up in the possession of unauthorized personnel either inside or outside the customer's facility.
- CORMAX cores are certified to meet the security, safety, and reliability requirements of BHMA A156.5 Grade 1.
- Picking and drilling resistance options are available if higher levels of security are desired.
- Complete factory masterkeying service offered, and at no charge with purchase of BEST locksets and PHI exit devices.
- Keyways are organized in families of four keyways each, with double-milled and quad-milled key levels to facilitate the design of masterkey systems in multi-building campuses.
- BEST CORMAX cores are compatible with all existing BEST interchangeable core housings, eliminating the need for new or modified locksets.



**CORMAX™**  
Patented Keying System

## STRIKES & DOOR PREPARATION



### STK Strike (Supplied Standard)

**Dimension:** Conforms to ANSI 115.2 for 1 3/8" doors (2 3/4" x 1 1/8" with curved lip and box)

**To order with lockset:** Designate "STK"



### S3 Strike (ANSI Strike)

**Dimension:** Conforms to ANSI 115.2 for 1 3/4" doors (4 7/8" x 1 1/8" with curved lip)

**To order with lockset:** Designate "S3"



### FL Strike (Full Lip Radius Strike)

**Dimension:** 2 1/4" x 1 1/4" with full curved lip and rounded corners

**To order with lockset:** Designate "FL"



**Stanley Security Solutions, Inc.**

6161 E. 75th Street Indianapolis, Indiana 46250

© 2013 Stanley Security Solutions, Inc. • [www.stanleysecuritysolutions.com](http://www.stanleysecuritysolutions.com)

10M 113  
BAS012