

HANDLE SHOWN IN OIL RUBBED BRONZE

THE SOSS ULTRALATCH IS AVAILABLE  
IN 10 DIFFERENT FINISHES:

BHMA #704  
Oil Rubbed Bronze  
US10B

BHMA #681E  
Bright Nickel, PVD  
US14

BHMA #682E  
Satin Nickel, PVD  
US15

BHMA #676  
Textured Black  
US19

BHMA #681  
Bright Chrome  
US26

BHMA #682  
Satin Chrome  
US26D

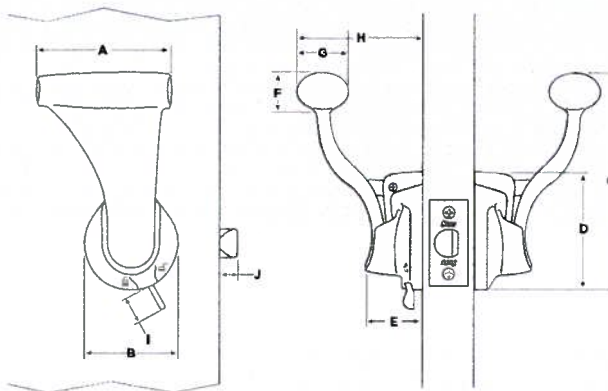
BHMA #677E  
Bright Brass, PVD  
US3

BHMA #678E  
Satin Brass, PVD  
US4

BHMA #629  
Bright Stainless Steel  
US32

BHMA #630  
Satin Stainless Steel  
US32D

#### ULTRALATCH DIMENSIONS



Dimension	Inches	MM
A	3 <sup>9</sup> / <sub>16</sub> "	90.49 mm
B	4 <sup>15</sup> / <sub>32</sub> "	47.62 mm
C	5 <sup>25</sup> / <sub>32</sub> "	127 mm
D	3 <sup>1</sup> / <sub>8</sub> "	76.20 mm
E	1 <sup>1</sup> / <sub>2</sub> "	38.10 mm
F	1 <sup>1</sup> / <sub>8</sub> "	26.99 mm
G	1 <sup>3</sup> / <sub>8</sub> "	34.93 mm
H	3 <sup>3</sup> / <sub>8</sub> "	85.73 mm
I	2 <sup>3</sup> / <sub>32</sub> "	18.26 mm
J	2 <sup>9</sup> / <sub>64</sub> "	11.51 mm

Standard Door Thickness: 1<sup>3</sup>/<sub>8</sub>", 1<sup>3</sup>/<sub>4</sub>" or 2"

Metric Door Thickness: 32.5–37 mm, 42–47 mm or 47–52 mm

Backset: 2<sup>3</sup>/<sub>8</sub>" (60 mm) or 2<sup>3</sup>/<sub>4</sub>" (70 mm)

#### MATCHING KEYED MEDECO DEADBOLT



AVAILABLE IN THE FOLLOWING FINISHES:

Oil Rubbed Bronze  
US10B

Bright Nickel  
US14

Satin Nickel  
US15

Black  
US19

Bright Chrome  
US26

Satin Chrome  
US26D



Bright Brass  
US3

Satin Brass  
US4

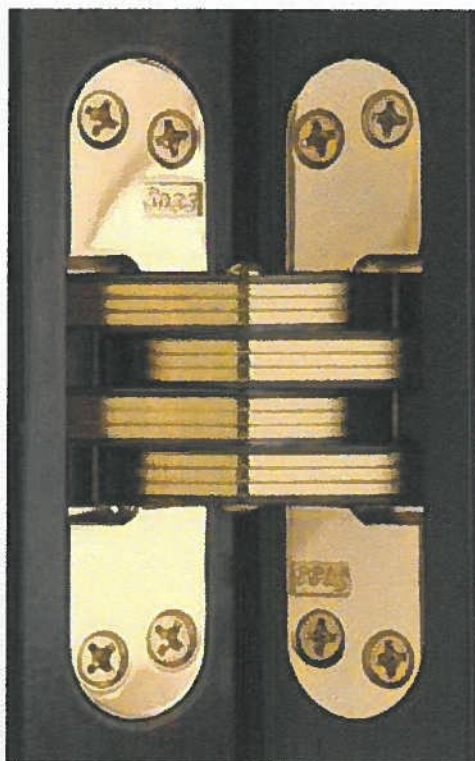
# Specifications



SOSS Invisible Hinges are available in 11 standard finishes in addition to bright and satin stainless steel and 24 karat gold plate. SOSS offers finishes to fit any décor.

	Unplated <b>UNP</b>
	White E-Coated <b>WHT</b>
	Oil Rubbed Bronze, Lacquered <b>US10BL</b>
	Bright Nickel <b>US14</b>
	Satin Nickel <b>US15</b>
	Black E-Coated <b>US19</b>
	Bright Chrome <b>US26</b>
	Satin Chrome <b>US26D</b>
	Bright Brass <b>US3</b>
	Satin Brass <b>US4</b>
	Antique Brass <b>US5</b>
	24 Karat Gold Plate <b>GOLD</b> (Special Order Only)
	BHMA #629 <b>US32</b> Bright Stainless Steel
	BHMA #630 <b>US32D</b> Satin Stainless Steel

The superior construction of the SOSS Invisible Hinges will give you strength and dependable operation for years. Standard hinges are made of high-strength plated steel and heavy-duty zinc alloy castings. A selection of hinges are also made of 316 stainless steel and alloy steel. The installed hinge is firmly anchored in a deep, full mortise, which assists the screws in supporting the door, assuring a stronger, more rigid installation.



(Please refer to price list for available finishes for each hinge size.)



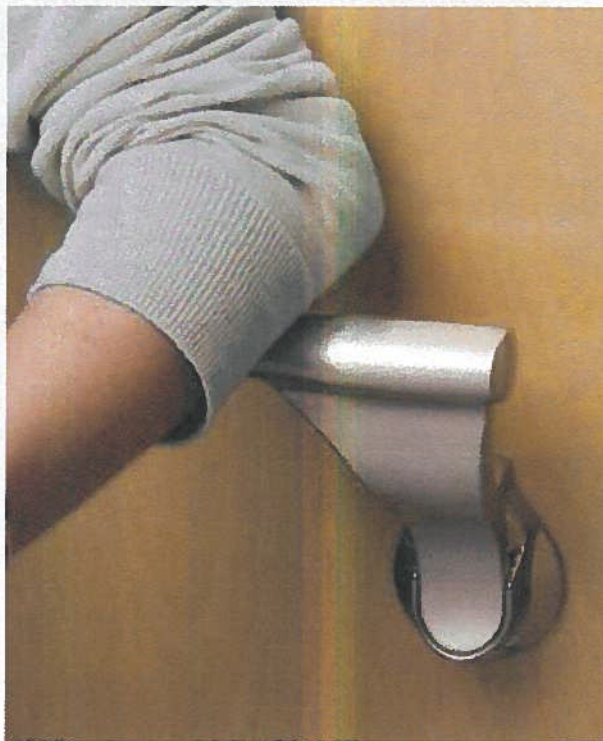
# Specifications

## The UltraLatch is:

**STRONG...** It is made of only top quality materials and constructed in the U.S.A. The base material for the SOSS UltraLatch is available in 316 stainless steel investment cast or zinc die cast.

**COMFORTABLE...** The UltraLatch is designed to conform to the shape of the hand and allows clearance for your knuckles.

**CONVENIENT...** Because of the UltraLatch's comfortable shape, opening doors is convenient for anyone. If you cannot grab the UltraLatch with your hand, this revolutionary door hardware works well with your hip or elbow.



### FEATURES:

- UltraLatch is available for standard door thicknesses of 1 $\frac{3}{8}$ ", 1 $\frac{3}{4}$ " or 2" and metric door thicknesses of 32.5–37 mm, 42–47 mm, or 47–52 mm. Additionally, it is designed for a 2 $\frac{3}{8}$ " (60 mm) or 2 $\frac{3}{4}$ " (70mm) backset.
- You may purchase the Ultralatch with or without a privacy lock, or as a stationary handle, without the internal mechanism.
- Matching keyed deadbolts are also available for further security.
- Limited Lifetime Warranty: SOSS UltraLatch is warranted against defects in material or workmanship. Made in the U.S.A., patented in the United States and other countries.

### BENEFITS:

- UltraLatch has been specifically designed to fit the 2 $\frac{1}{8}$ " (54 mm) diameter hole that is standard in most doors.
- The handles fit either right or left handed doors. All necessary hardware is packed with each UltraLatch.
- Easy Open: Ergonomic shape and location create the ideal function, eliminating the need to grip or rotate. Push/pull motion is easy for any size hand to operate.
- UltraLatch can be installed as a retrofit to existing doors as well as in new installations.

### SPECIFICATIONS:

- ADA compliant
- Latch movement:  $\frac{1}{2}$ " max — push/pull
- Each handle to have independent spring mechanism designed to control latch.
- Function: Passage / Privacy as listed in hardware sets

**APPLICATIONS:** Healthcare, Patient Room Doors, Assisted Living Facilities, Disabled Housing, Educational Institutions, Home or Office

### ANSI GRADE 1

The SOSS UltraLatch has been independently-tested to meet or exceed ANSI Grade 1 specifications.



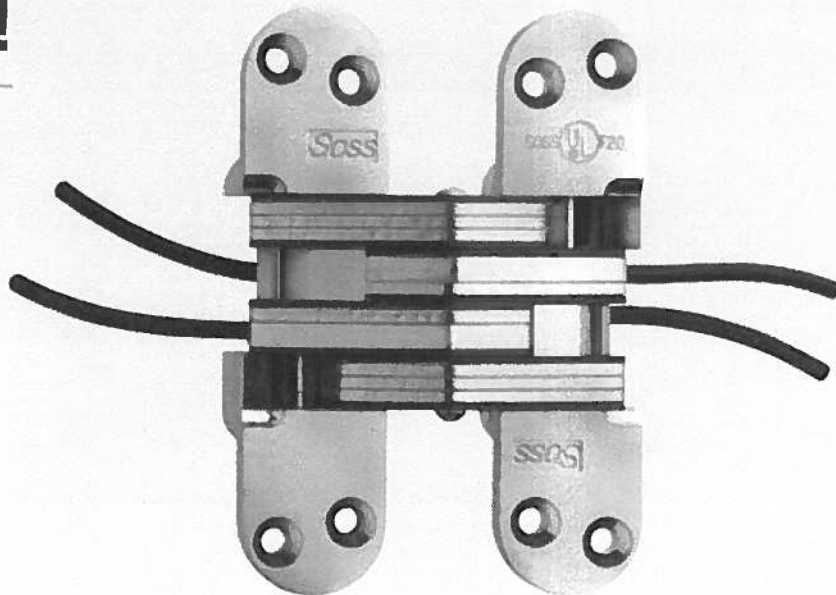
### FIRE-RATING

The SOSS UltraLatch has passed a Positive Pressure Fire Test and Hose Stream test for 20-minute fire-rated doors.



# New Product!

## Power Transfer Hinge



The new SOSS Power Transfer Hinge gives you the ability to send power through our hinges. Two models, the 218PT and 220PT, are currently available. The 218PT is for doors with a 1¾" thickness and the 220PT is for doors of 2" or more. Both models have been labeled by Underwriters Laboratories for use on hollow metal, sheet metal, tin clad, steel composite or wood core swinging type fire doors and frames with 20-minute ratings.

These hinges are available with either 9" wires on both sides or 4" wires on one side and 1" on the other. Please see chart below.

The SOSS Power Transfer Hinges are for use with **four or six** wire applications and **interior use only**. **Maximum wire rating is one ampere at 20 volts of direct current**. For devices requiring more than one AMP, do not use SOSS Power Transfer Hinge. The maximum total current for a four wire hinge is two times the maximum current shown in the electrical ratings chart: two wires in, two wires out of door. The wires are 24 & 26 AWG for both the #218 and #220 PT1 & PT4 hinges. These wires are **not** to be connected to wires larger than 18 AWG wires.

### Model 218PT1 and 218PT4

Dimension	Inches	mm
A	1½"	28.58 mm
B	7⁄8"	22.23 mm
C	4⁄8"	117.48 mm
D	¾"	9.53 mm
E	¼"	6.35 mm
F	2 15⁄32"	11.91 mm
G	⅞"	1.59 mm
H	1 11⁄16"	41.67 mm
I	1 13⁄32"	10.32 mm

Min. Mat. Thickness: 1¾" (44.45 mm)

Wood Screw Size: #10x1½"

Soft Wood Pilot Hole: No. 43

Hard Wood Pilot Hole: No. 31

Machine Screw Size: #10-24x1"

Hinge Weight: 1.95 lb.

### Model 220PT1 and 220PT4

Dimension	Inches	mm
A	1¾"	34.93 mm
B	1 1⁄16"	26.99 mm
C	5 1⁄2"	139.70 mm
D	½"	12.70 mm
E	9⁄32"	7.14 mm
F	2 15⁄16"	74.61 mm
G	⅞"	1.59 mm
H	1 13⁄16"	50.40 mm
I	1 1⁄32"	11.91 mm

Min. Mat. Thickness: 2" (50.80 mm)

Wood Screw Size: #12x1½" (5.5x38 mm)

Soft Wood Pilot Hole: No. 38

Hard Wood Pilot Hole: No. 25

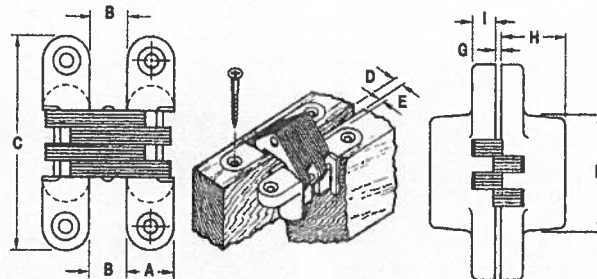
Machine Screw Size: #12-24x1"

Hinge Weight: 3.24 lb.

### SOSS Power Transfer Hinge Amperage Rating

Model	Wire Length Supplied	Max Amperage @ 20VDC
218PT1	9 in. / 9 in.	1.0 Amps
218PT4	4 ft. / 1 ft.	.4 Amps
220PT1	9 in. / 9 in.	1.0 Amps
220PT4	4 ft. / 1 ft.	.4 Amps

### KEY TO DIMENSIONS SHOWN IN CHARTS

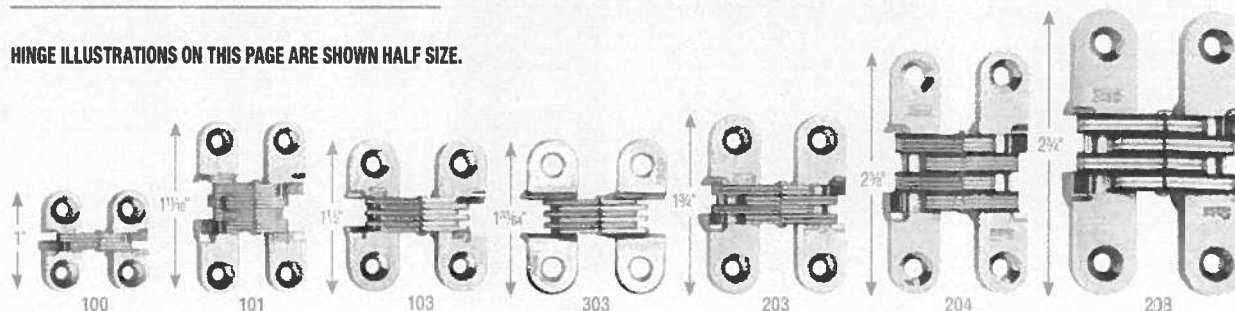


All hinges are shipped with the proper size wood screws unless ordered without. Do not exceed "E" dimension.



# Specifications

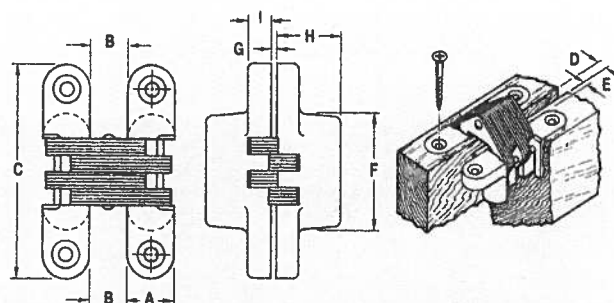
HINGE ILLUSTRATIONS ON THIS PAGE ARE SHOWN HALF SIZE.



Dimension	100	101	103	303	203	204	208
A	3/8\" (9.53mm)	3/8\" (9.53mm)	1/2\" (12.70mm)	1/2\" (12.70mm)	1/2\" (12.70mm)	1/2\" (12.70mm)	5/8\" (15.8mm)
B	3/4\" (7.14mm)	3/4\" (7.54mm)	3/8\" (9.53mm)	3/8\" (9.53mm)	3/4\" (9.13mm)	3/4\" (9.13mm)	3/4\" (11.51mm)
C	1\" (25.40mm)	1 1/8\" (42.86mm)	1 1/2\" (38.10mm)	1 3/4\" (38.50mm)	1 3/4\" (44.45mm)	2 3/8\" (60.33mm)	2 3/4\" (69.85mm)
D	3/4\" (2.38mm)	3/4\" (2.78mm)	1/8\" (3.18mm)	1/8\" (3.18mm)	3/4\" (2.78mm)	3/4\" (2.78mm)	3/4\" (3.57mm)
E	3/4\" (2.38mm)	3/4\" (2.38mm)	1/8\" (3.18mm)	1/8\" (3.18mm)	1/8\" (3.18mm)	1/8\" (3.18mm)	3/4\" (3.97mm)
F	3/8\" (9.53mm)	1/2\" (22.23mm)	1 1/8\" (17.46mm)	1 3/4\" (15.08mm)	3/4\" (19.05mm)	1 1/4\" (31.75mm)	1 1/2\" (34.13mm)
G	1/2\" (.79mm)	1/2\" (.79mm)	1/2\" (.79mm)	1/2\" (.79mm)	1/2\" (.79mm)	1/2\" (.79mm)	3/4\" (1.19mm)
H	1 3/4\" (11.91mm)	2 3/4\" (11.51mm)	1 3/4\" (15.08mm)	4 3/4\" (16.27mm)	2 3/4\" (18.26mm)	2 3/4\" (18.26mm)	2 3/4\" (23.02mm)
I	1 5/8\" (5.96mm)	3/4\" (5.56mm)	3/4\" (5.56mm)	.054\" (1.37mm)	3/8\" (4.76mm)	1/4\" (6.35mm)	3/4\" (7.14mm)
Minimum Material Thickness	1/2\" (12.70mm)	1/2\" (12.70mm)	3/4\" (19.05mm)	1 1/8\" (17.46mm)	3/4\" (19.05mm)	3/4\" (19.05mm)	1\" (25.40mm)
Wood Screw Sizes	#5x3/4\" (3.5x19mm)	#5x3/4\" (3.5x19mm)	#6x1\" (3.5x25mm)	#5x3/4\" (3.5x19mm)	#6x1\" (3.5x25mm)	#7x1 1/4\" (3.9x32mm)	#8x1 1/4\" (4.2x32mm)
Soft Wood Pilot Hole	No. 53	No. 53	No. 52	No. 53	No. 52	No. 51	No. 48
Hard Wood Pilot Hole	No. 47	No. 47	No. 44	No. 47	No. 44	No. 39	No. 35
Machine Screw Sizes	#4-40x1/2\"	#4-40x1/2\"	#6-40x1/2\"	#5-40x1/2\"	#6-40x1/2\"	#8-32x3/8\"	#8-32x3/8\"
Hinge Weight	.04 lb.	.07 lb.	.09 lb.	.05 lb.	.11 lb.	.20 lb.	.34 lb.

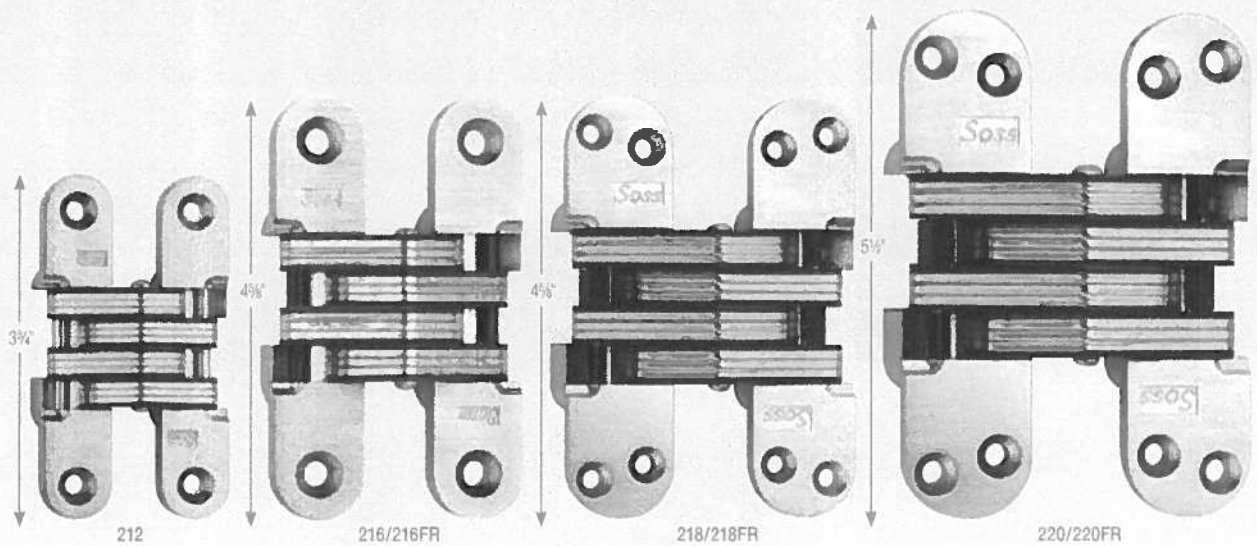
NOTE: Refer to page 43 for assistance with choosing the right hinge for the job.

## KEY TO DIMENSIONS SHOWN IN CHARTS



All hinges are shipped with the proper size wood screws unless ordered without. Machine screws available upon request for an additional charge. Do not exceed "E" dimension.

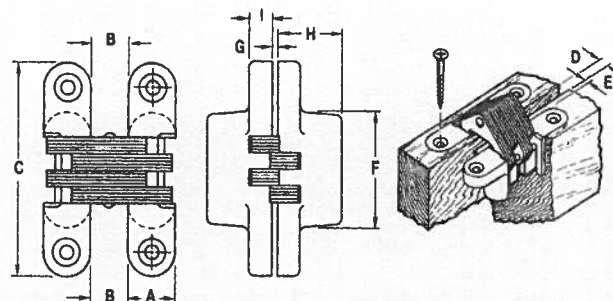




Dimension	212	216/216FR	218/218FR	220/220FR
A	3/4" (19.05mm)	1" (25.40mm)	1 1/8" (28.58mm)	1 3/8" (34.93mm)
B	3/16" (13.89mm)	4/16" (18.65mm)	7/16" (22.23mm)	1 1/16" (26.99mm)
C	3 3/4" (95.25mm)	4 5/8" (117.48mm)	4 5/8" (117.48mm)	5 1/2" (139.70mm)
D	1 1/16" (4.37mm)	5/16" (5.95mm)	3/8" (9.53mm)	1/2" (12.70mm)
E	3/16" (4.76mm)	1/4" (6.35mm)	1/4" (6.35mm)	5/32" (7.14mm)
F	2 1/16" (52.39mm)	2 9/32" (65.88mm)	2 9/32" (62.71mm)	2 1/16" (74.61mm)
G	3/16" (1.19mm)	1/16" (1.59mm)	1/16" (1.59mm)	1/16" (1.59mm)
H	1 5/16" (27.38mm)	1 5/32" (37.31mm)	1 5/16" (41.67mm)	1 5/16" (50.40mm)
I	3/16" (9.53mm)	5/32" (11.91mm)	3/32" (10.32mm)	5/32" (11.91mm)
Minimum Material Thickness	1 1/8" (28.58mm)	1 3/8" (34.93mm)	1 3/4" (44.45mm)	2" (50.80mm)
Wood Screw Sizes	#10x1 1/4" (4.8x32mm)	#14x1 1/2" (6.3x38mm)	#10x1 1/2" (4.8x38mm)	#12x1 1/2" (5.5x38mm)
Soft Wood Pilot Hole	No. 43	No. 32	No. 43	No. 38
Hard Wood Pilot Hole	No. 31	No. 10	No. 31	No. 25
Machine Screw Sizes	#10-24x3/4"	#1/4-20x1"	#10-24x1"	#12-24x1"
Hinge Weight	.75 lb.	1.65 lb.	1.86 lb.	3.15 lb.

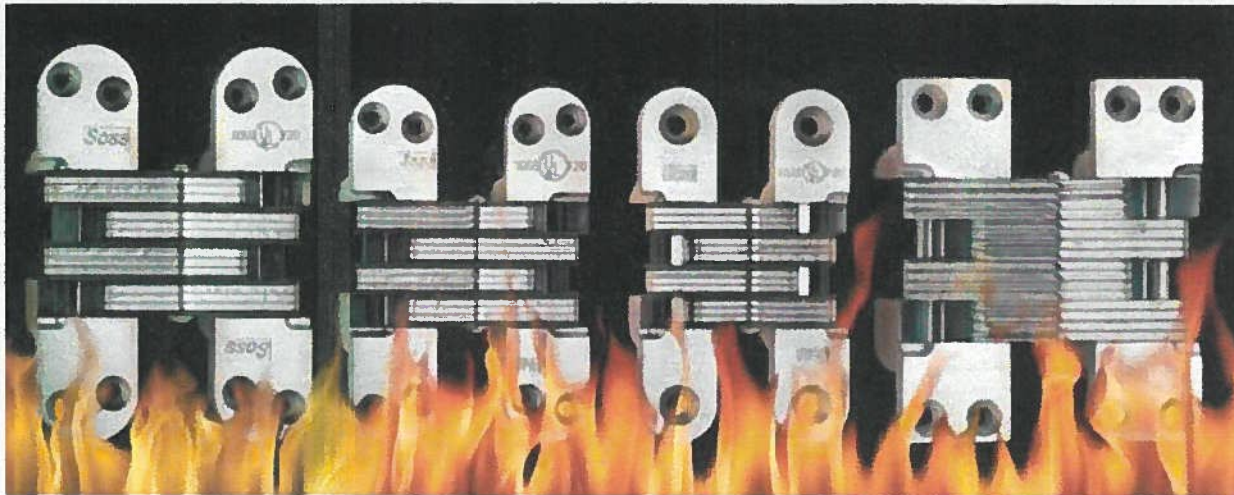
**NOTE:** Refer to page 43 for assistance with choosing the right hinge for the job.  
Refer to page 38 for fire-rated information.

#### KEY TO DIMENSIONS SHOWN IN CHARTS



All hinges are shipped with the proper size wood screws unless ordered without. Machine screws available upon request for an additional charge.  
Do not exceed "E" dimension.

# Fire-rated



SOSS offers a complete line of fire-rated invisible hinges. Whether your doorway is made of wood or metal, rated 20 minutes or three hours, there is a SOSS fire-rated hinge that will comply and still give you the "uniquely invisible" hinge that you expect from SOSS.

SOSS Invisible Hinge models #418, #418SS, #220AS, #220SS, #420 and #420SS are classified in accordance with Underwriters Laboratories test standards UL10C and UBC7-2(1997).

The chart below lists the SOSS Invisible Hinges that are currently available for fire-rating.

## 420 and 420SS

The SOSS Invisible #420 Hinge is specifically designed with square edges for metal doors.

The Underwriters Laboratories labeled #420 SOSS Invisible Hinge can be used on hollow metal, sheet metal, tin clad and steel composite swinging-type fire doors and frames rated up to and including **three hours**. Additionally, they can be used on wood core doors and frames rated up to **20 minutes**.

Use at least one fire-rated hinge for every **20"** of door height or portion thereof, or one hinge for every **60 lbs.** or fraction thereof, whichever calculation demands more hinges.

## 416, 416SS, 418, 418SS, 220AS and 220SS

The Underwriters Laboratories labeled 416, 416SS, 418, 418SS, 220AS and 220SS SOSS Invisible Hinges can be used on hollow metal, sheet metal, tin clad and steel composite swinging-type fire doors and frames rated up to and including **three hours**. They also can be used on wood core doors and frames rated up to **20 minutes**.

Additionally, they can be used on wood/plastic composite doors constructed with Georgia Pacific FS I or FS II banding for a rating up to and including **90 minutes**.

Use at least one fire-rated hinge for every **20"** of door height or portion thereof, or one hinge for every **60 lbs.** or fraction thereof, whichever calculation demands more hinges.

## 216FR, 218FR, 220FR, 218PT1, 218PT4, 220PT1 and 220PT4

The Underwriters Laboratories labeled 216FR, 218FR, 220FR, 218PT1, 218PT4, 220PT1 and 220PT4 SOSS Invisible Hinges can be used on hollow metal, sheet metal, tin clad, steel composite or wood core swinging-type fire doors and frames with **20 minute** ratings.

Use at least one fire-rated hinge for every **20"** of door height or portion thereof, or one hinge for each **60 lbs.** or fraction thereof, whichever calculation demands more hinges.

Special door and jamb preparation may be required for all fire-rated hinges.

**NOTE: SOSS Invisible Hinge product specifications available on request.**

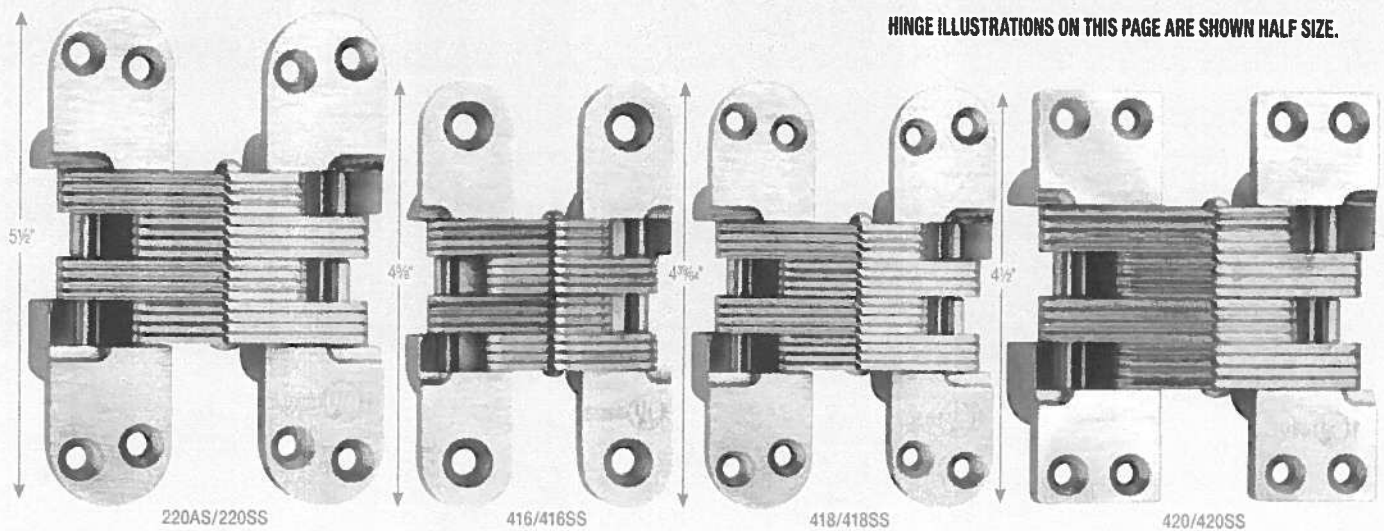
Never exceed maximum door size of 4' wide by 8' tall for fire-rated doors only.

Hinge No.	Description	Door Material	Rating (Mins.)	Min Door Thickness
216FR	#216 hinge with UL Rating	wood/metal	20	1 $\frac{3}{8}$ "
218FR	#218 hinge with UL Rating	wood/metal	20	1 $\frac{3}{4}$ "
220FR	#220 hinge with UL Rating	wood/metal	20	2"
218PT1	#218, 1 amp power transfer hinge with UL Rating	wood/metal	20	1 $\frac{3}{4}$ "
218PT4	#218, 4 amp power transfer hinge with UL Rating	wood/metal	20	1 $\frac{3}{4}$ "
220PT1	#220, 1 amp power transfer hinge with UL Rating	wood/metal	20	2"
220PT4	#220, 4 amp power transfer hinge with UL Rating	wood/metal	20	2"
416	Similar to #216, but made of alloy steel	wood/metal	90/180*	1 $\frac{3}{8}$ "
416SS	Similar to #216, but made of stainless steel	wood/metal	90/180*	1 $\frac{3}{8}$ "
418	Similar to #218, but made of alloy steel	wood/metal	90/180*	1 $\frac{3}{4}$ "
418SS	Similar to #218, but made of stainless steel	wood/metal	90/180*	1 $\frac{3}{4}$ "
220AS	Similar to #220, but made of alloy steel	wood/metal	90/180*	2"
220SS	Similar to #220, but made of stainless steel	wood/metal	90/180*	2"
420	UL rated hinge for metal made of alloy steel	metal	180	2"
420SS	UL rated hinge for metal made of stainless steel	metal	180	2"

\* The #416, #416SS, #418, #418SS, #220AS, and #220SS SOSS Hinges are used on 90 minute wood faced doors constructed to Georgia Pacific Specifications utilizing 2" No. 14, No. 10 and No. 12 screws respectively; the door style (hinge side) must be a minimum of 2 $\frac{1}{4}$ " wide.

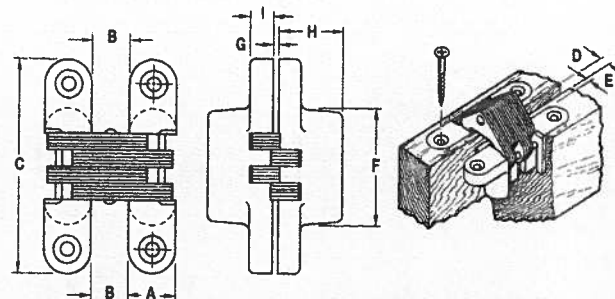


HINGE ILLUSTRATIONS ON THIS PAGE ARE SHOWN HALF SIZE.


**Fire-Rated Applications for Metal or Wood**

Dimension	220AS/220SS	416/416SS	418/418SS	420/420SS
A	1 5/8" (34.93mm)	1" (25.40mm)	1 1/8" (28.58mm)	1 5/8" (34.93mm)
B	1 1/8" (26.99mm)	7/8" (18.65mm)	5/8" (21.83mm)	1 1/8" (26.59mm)
C	5 1/2" (139.70mm)	4 3/8" (117.48mm)	4 3/8" (117.08mm)	4 1/2" (114.30mm)
D	1/2" (12.70mm)	1/8" (5.95mm)	3/8" (9.13mm)	3/8" (12.30mm)
E	3/32" (7.14mm)	1/4" (6.35mm)	1/4" (6.35mm)	3/32" (7.15mm)
F	2 3/32" (75.41mm)	2 9/16" (66.28mm)	2 7/16" (61.91mm)	2 9/16" (74.62mm)
G	3/32" (2.38mm)	1/8" (1.59mm)	1/8" (1.59mm)	3/32" (2.38mm)
H	1 5/8" (50.40mm)	1 5/8" (37.31mm)	1 4/8" (41.67mm)	1 3/8" (50.01mm)
I	1 5/32" (11.91mm)	1 5/32" (11.91mm)	1 3/32" (10.32mm)	1 5/32" (11.91mm)
Min. Mat. Thickness	2" (50.80mm)	1 1/8" (34.93mm)	1 3/4" (44.45mm)	2" (50.80mm)
Wood Screw Sizes	#12x2 1/2"	#14x2 1/2"	#10x2 1/2"	N/A
Soft Wood Pilot Hole	No. 38	No. 32	No. 43	N/A
Hard Wood Pilot Hole	No. 25	No. 10	No. 31	N/A
Machine Screw Sizes	#12-24x1"	#14-20x1"	#10-24x3/4"	#12-24x1"
Hinge Weight	3.80 lbs.	1.92 lbs.	2.15 lbs.	3.44 lbs.

**NOTE:** Refer to page 38 for selecting the right hinge for fire-rated applications.

**KEY TO DIMENSIONS SHOWN IN CHARTS**


All hinges are shipped with the proper size wood screws unless ordered without. Machine screws available upon request for an additional charge. Do not exceed "E" dimension.



# Metal Cabinet Applications

## HINGES ARE SHOWN HALF SIZE.

An assortment of specially modified SOSS Invisible Hinges are available for use in cabinets, computers, copiers and other electronic equipment. If you have a unique hinge installation application for our invisible hinge, modifications can be made to any of our standard models.

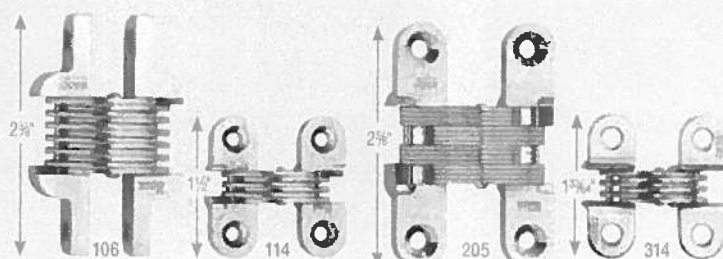
## INSTALLATION OF METAL CABINET HINGES

Hinges 114, 205 and 314 are designed for easy installation in metal cabinets. A typical installation is shown in adjacent drawings. Hinge is shown in the open and closed position.

When installing hinges, sheet metal flange should be slotted for link bunch and drilled for fastener.

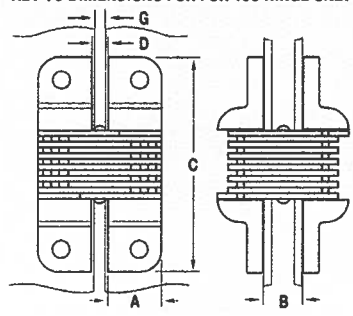
### Model 106:

Mounts on BACK of door and frame and requires no mortise. Hinge is visible from the back, maximum door thickness is 5/64".

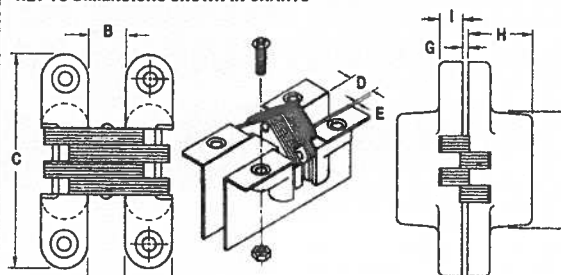


Dimension	106	114	205	314
A	1/2" (15.08mm)	1/2" (12.70mm)	1/2" (12.70mm)	1/2" (12.70mm)
B	7/8" (11.11mm)	2 3/4" (11.51mm)	3 3/4" (14.68mm)	2 3/4" (11.51mm)
C	2 3/8" (60.33mm)	1 1/2" (38.10mm)	2 3/8" (60.33mm)	1 3/8" (38.50mm)
D	1 3/4" (5.16mm)	1 3/4" (5.16mm)	2 3/4" (8.33mm)	1 3/4" (5.16mm)
E	N/A	1/8" (3.18mm)	1/8" (3.18mm)	1/8" (3.18mm)
F	N/A	1 1/8" (17.46mm)	1 1/4" (31.75mm)	1 1/2" (15.08mm)
G	1 1/2" (15.08mm)	3/4" (2.38mm)	1 3/4" (5.95mm)	3/4" (2.38mm)
H	N/A	1 1/2" (15.08mm)	2 3/8" (18.26mm)	1 3/4" (16.27mm)
I	N/A	7/8" (5.56mm)	1/4" (6.35mm)	1/8" (1.59mm)
Min. Matl. Thickness	N/A	N/A	N/A	N/A
Machine Screw Sizes	????	#6-40x1/2"	#8-32x3/4"	#5-40x1/2"
Hinge Weight	.18 lb.	.10 lb.	.22 lb.	.06 lb.

### KEY TO DIMENSIONS FOR 106 HINGE ONLY



### KEY TO DIMENSIONS SHOWN IN CHARTS

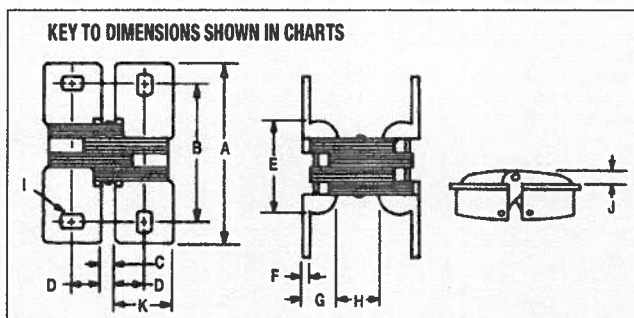
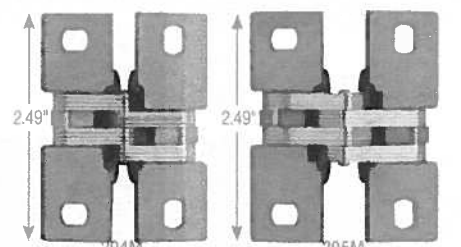


All metal cabinet hinges are shipped without screws unless otherwise specified. Do not exceed "E" dimension.

# Metal Applications

## Special Applications

## HINGES ARE SHOWN HALF SIZE.

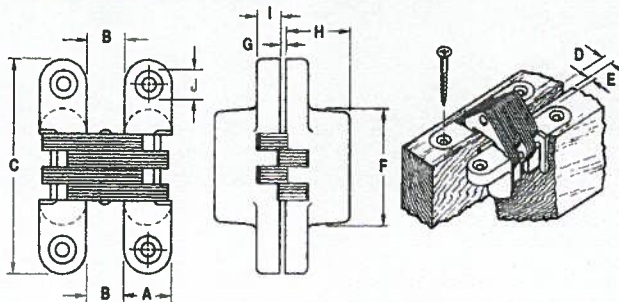
Dimension	204M	205M
A	2.49" (63.25mm)	2.49" (63.25mm)
B	1.89" (48mm)	1.89" (48mm)
C	.05" (1.27mm)	.23" (5.84mm)
D	.41" (10.41mm)	.41" (10.41mm)
E	1.25" (31.75mm)	1.25" (31.75mm)
F	.11" (2.79mm)	.11" (2.79mm)
G	.50" (12.70mm)	.50" (12.70mm)
H	.36" (9.14mm)	.58" (14.73mm)
I	.31"x.22" (7.87x5.59mm)	.31"x.22" (7.87x5.59mm)
J	-	.18" (4.57mm)
K	.80" (20.32mm)	.80" (20.32mm)
Hinge Weight	.20 lb.	.22 lb.

# Modifications Are Available!

HINGES AT RIGHT ARE SHOWN HALF SIZE.

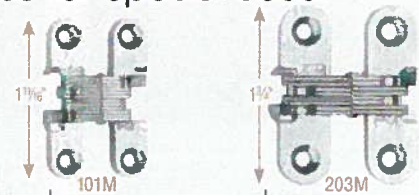
For special applications, unusual sizes and weights, engineering and design assistance is available free of charge. Please consult the SOSS Home Office.

KEY TO DIMENSIONS SHOWN IN CHARTS



All hinges are shipped with the proper size wood screws unless ordered without. Do not exceed "E" dimension.

We have modified the screw hole sizes for special uses.



Dimension	101M	203M
A	3/8" (9.53mm)	1/2" (12.70mm)
B	1/8" (7.54mm)	3/16" (9.13mm)
C	1 1/8" (42.86mm)	1 1/4" (44.45mm)
D	7/16" (2.78mm)	7/16" (2.78mm)
E	1/2" (2.38mm)	1/8" (3.18mm)
F	7/8" (22.23mm)	3/4" (19.05mm)
G	1/2" (.79mm)	1/2" (.79mm)
H	3/16" (11.51mm)	3/32" (18.26mm)
I	7/32" (5.56mm)	3/16" (4.76mm)
J	.150" (w/.281" Countersink)	.230" (w/3/16" dia. x .09" Deep C-Bore)
Min. Mat. Thickness	1/8" (12.70mm)	3/4" (19.05mm)

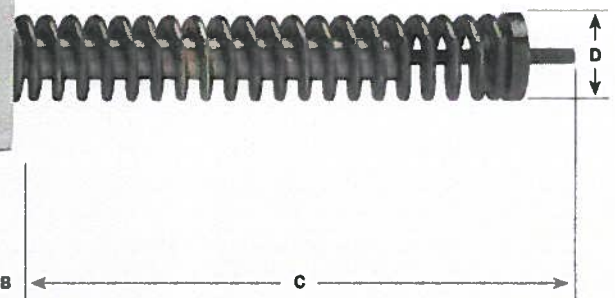
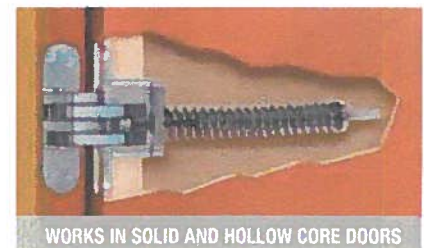
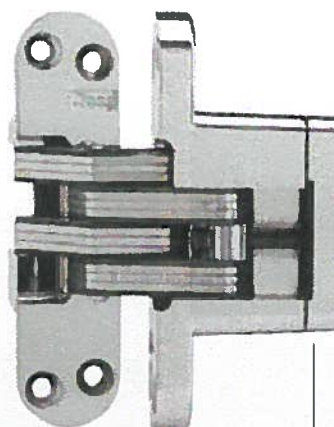
Counterboring available by special request.

# Invisible Spring Hinge Closer

The SOSS Invisible Spring Closer gives you a spring closer that is totally invisible from either side when the door is closed. When the door is open, you see only the hinge face and links.

The closure rate is completely adjustable with an Allen wrench after installation. Installation can be either inside the door itself or inside the door jamb. Allow one spring closer for each 75 lbs. of door weight. See sizing chart for number of hinges required.

The SOSS Invisible Spring Closer is ideally suited for all types of doors 1 3/8" thick or more. Recommended spacing is one half of the distance from the center of the door to the center of the top hinge.



Door Thickness	Spring Closer #	Description	A	B	C	D
1 3/8"	216IC	Spring Closer with regular hinge	1 1/32"	3/8"	6 3/8"	3/4"
1 3/4"	218IC	Spring Closer with regular hinge	1 1/16"	3/8"	7"	1"
2"	220IC	Spring Closer with regular hinge	1 5/16"	3/8"	6 7/8"	1"