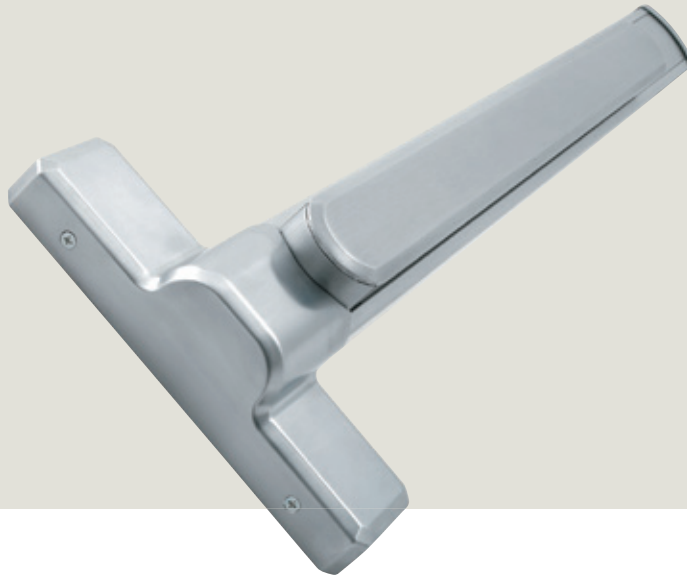


# QED100 Exit Devices

dormakaba 



## Enhanced versatility for high-use applications.

dormakaba Commercial Hardware designed the QED100 exit device series to accommodate the widest range of uses. With plenty of device types, functions, and options available, you can use the QED100 in more applications. A comprehensive offering of trim and finish options makes the QED100 series compatible with other dormakaba Commercial Hardware components so you can design a visually cohesive, complete access control solution.

### Features

- **Comprehensive offering.** With a wide range of device types, trim selections, and enhanced security features available, you can configure the QED100 series for even more applications.
- **Consistent styling.** We designed the QED100 series with the same aesthetic features you'll find in QED200 narrow stile exit devices, so it's easy to maintain consistent styling throughout your facility.
- **Industry-leading warranty.** Each QED100 product comes with a lifetime mechanical warranty, a three-year warranty on finish, and a one-year warranty on electrical components.
- **Exceeds safety standards.** The QED100 series is BHMA/ANSI Grade 1 certified, and significantly exceeds performance requirements. Available options include hurricane compliance and fire rating. The series includes a thru bolt design for enhanced security and durability.
- **Easy installation.** The QED100 series comes non-handed and field reversible, and is also field sizeable to fit non-standard doors.
- **Short lead time.** QED100 exit devices are available for immediate shipment.



# Strength and durability come standard.

We engineered our QED100 series with features like thru bolt design and available options like hurricane compliance and fire rating so that you can trust the security, strength, and durability of these exit devices no matter which trim, finish, or configuration option you choose.

## QED100 Heavy Duty Exit Device Specifications

Certifications	ANSI/BHMA A156.3 Series—Grade 1 ANSI A117.1 Section 404.2.6 Accessibility Code (ADA compliant) UL/cUL listed (3 hour) for "A" label door applications (8' by 8') California Administrative Code Title 24 compliant for Sierra and Summit lever trims Hurricane Compliant – Miami-DADA N.O.A. for Rim and SVR options	
Materials and Options	Rim latch bolt: stainless steel 3/4" (19mm) standard SVR and CVR latch bolt: stainless steel 1/2" (12.7mm) throw Fasteners: wood screws, machine screws, and sex bolts standard Head cap and end cap: zinc die-cast Dogging: hex key and cylinder dogging available	
Sizing and Measurements	36" field sizeable to 32" door 48" field sizeable to 36" door Standard door thickness: 1-3/4" (44.5mm) Standard backset: 2-7/8" (62mm) to face of doorstop Rim stile width: 4-1/4" (108mm) minimum SVR and CVR stile width: 3-1/2" (89mm) minimum SVR and CVR door height: 7' and 8' options	
Keying	Keyway options include: BF-SFIC "F", KW-Kwikset, WE-Weiser, SC-Schlage, GA-Yale, LA-Sargent, LC-Less Cylinder	
Exit Device Functions	QED111: Rim Hex Dog QED112: Rim Cylinder Dog QED113: Rim Fire-rated QED114: SVR Hex Dog QED115: SVR Cylinder Dog QED116: SVR Fire-rated QED117: SVR Less Bottom Rod – Hex Dog QED118: SVR Less Bottom Rod – Cylinder Dog	QED119: SVR Less Bottom Rod – Fire-rated QED124: CVR Hex Dog QED125: CVR Cylinder Dog QED126: CVR Fire-rated QED127: CVR Less Bottom Rod – Hex Dog QED128: CVR Less Bottom Rod – Cylinder Dog QED129: CVR Less Bottom Rod – Fire-rated
Electrification	QED__LR: Electrified Latch Retraction - Requires power supply 8Q00312 or 8Q00313 QED__ED: Electrified Dogging - Uses power supply 8Q00314 QED__X: Request to Exit QED__LRX: Electrified Latch Retraction with Request to Exit - Requires power supply 8Q00312 or 8Q00313 QED__EDX: Electrified Dogging with Request to Exit - Uses power supply 8Q00314	
Finishes	313AN: Anodized Duranodic Bronze, 605: Bright Brass, 626: Satin Chrome	
Warranties	Lifetime mechanical, three-year finish, One-year electrical	



313AN: Anodized Duranodic Bronze



605: Bright Brass



626: Satin Chrome