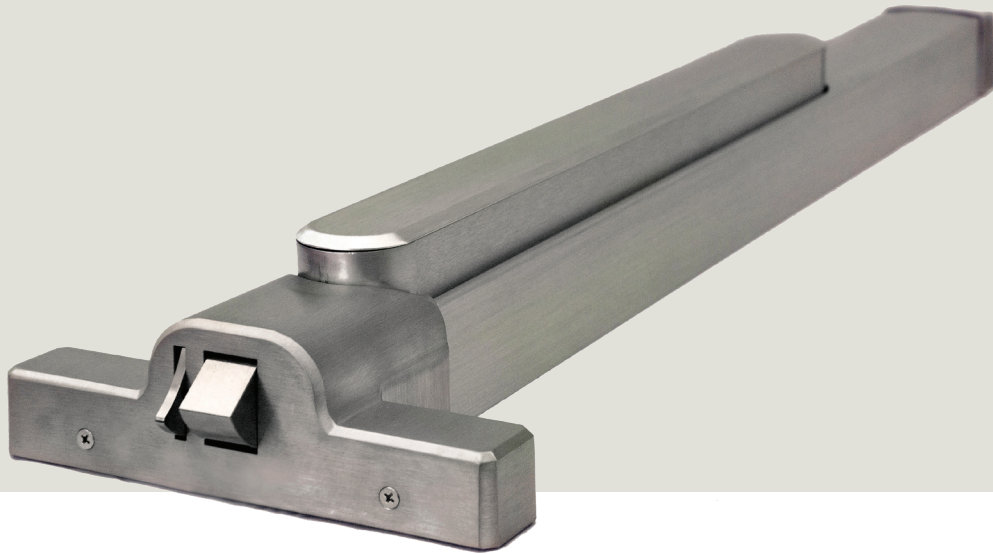


QED200 Exit Devices

dormakaba 



Form meets function.

dormakaba's QED200 narrow stile exit device series combines premium design with industry-leading performance. With features to make installation quick and easy, the QED200 series fits any wood, steel, or aluminum narrow stile door. Choose features and finishes that complement your door hardware solution from dormakaba.



Features

- **More options.** Choose from a wide range of device types, trim selections, and enhanced security features available, to configure the QED200 series for even more applications.
- **Consistent styling.** dormakaba Commercial Hardware products are designed with the same aesthetic features, so it's easy to maintain a consistent styling throughout your facility.
- **Better warranties.** Each QED200 product comes with a lifetime mechanical warranty and a three-year warranty on finish.
- **Exceptional safety.** The QED200 series is BHMA/ANSI Grade 1 certified, and significantly exceeds performance requirements. The series includes a thru bolt design for enhanced security and durability.
- **Easy installation.** The QED200 series comes non-handed and field reversible, and are also field sizeable to fit non-standard doors.
- **Short lead time.** QED200 exit devices are available for immediate shipment.

Setting the standard for safety and reliability.

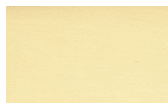
We designed the QED200 series to exceed industry standards for security and durability so you can trust your narrow stile exit device to perform long term. dormakaba's narrow stile exit devices exceed ANSI standards, are UL-listed for panic exit hardware, and meet ADA requirements. And with a wide range of configuration options, it's simple to integrate the QED200 into any application.

QED200 Heavy Duty Narrow Stile Exit Device Specifications

Certifications	ANSI/BHMA A156.3 Series—Grade 1 ANSI A117.1 Section 404.2.6 Accessibility Code (ADA compliant) UL/cUL listed (3 hour) for "A" label door applications (8' by 8') when used with HMS strike California Administrative Code Title 24 compliant for lever trims	
Materials and Options	Rim latch bolt: stainless steel 3/4" (19mm) standard SVR and CVR latch bolt: stainless steel 1/2" (12.7mm) throw Fasteners: wood screws, machine screws, and sex bolts standard Head cover and end cap: zinc die-cast Dogging: hex key and cylinder dogging available QED219 and QED229 include bottom fire bolt Rim strikes: ALS (blade stop strike) and HMS (hollow metal strike) – unfinished SVR and CVR strikes: Top and bottom standard and fire-rated strikes - unfinished	
Sizing and Measurements	36" field sizeable to 32" door 48" field sizeable to 36" door Standard door thickness: 1-3/4" (44.5mm) Can accommodate doors up to 2-3/4" thick with use of Thick Door Kit SVR and CVR door height: 7' standard with 84" rod; 8' with 96" rod Rim stile width: 2" (50.8mm) minimum for ALS strike; 3-1/2" minimum (89mm) for HMS strike option SVR stile width: 2" (50.8mm) minimum CVR stile width: 3-1/2" (89mm) minimum	
Keying	Keyway options include: BF-SFIC "F", KW-Kwikset, WE-Weiser, SC-Schlage, GA-Yale, LA-Sargent, LC-Less Cylinder	
Exit Device Functions	QED211: Rim Hex Dog QED212: Rim Cylinder Dog QED213: Rim Fire-rated QED214: SVR Hex Dog QED215: SVR Cylinder Dog QED216: SVR Fire-rated QED217: SVR Less Bottom Rod – Hex Dog QED218: SVR Less Bottom Rod – Cylinder Dog	QED219: SVR Less Bottom Rod – Fire-rated QED224: CVR Hex Dog QED225: CVR Cylinder Dog QED226: CVR Fire-rated QED227: CVR Less Bottom Rod – Hex Dog QED228: CVR Less Bottom Rod – Cylinder Dog QED229: CVR Less Bottom Rod – Fire-rated
Finishes	313AN: Anodized Duranodic Bronze, 605: Bright Brass, 626: Satin Chrome	
Warranties	Lifetime mechanical, three-year finish	



313AN: Anodized Duranodic Bronze



605: Bright Brass



626: Satin Chrome

ST-CH-0237 05/21

dormakaba USA Inc.
6161 E. 75th St.
Indianapolis, IN 46250
800.523.8483

dormakaba Canada Inc.
7301 Decarie Blvd
Montreal, Quebec H4P 2G7
877 468-3555

www.dormakaba.us