



SCHLAGE

Portable
security and
cabinet locks





Information and customer care



us.allegion.com



US 877.671.7011
Canada 800.900.4734



support@allegion.com
Mechanical_Locks_TechProdSupport@allegion.com



www.youtube.com/schlagesecurity

Ordering



Allegion_Orders@allegion.com



eFax: 1.833.312.3669

Put your trust in the name you know

For more than 90 years, Schlage® has been creating the strongest and most technologically advanced security products for schools, hospitals, hotels, commercial and institutional buildings, multi-family properties and homes. From durable mechanical locks to comprehensive electronic access control solutions and biometrics, Schlage provides protection at critical moments – when property and personal security are at stake. With a wide range of products, styles and finishes, Schlage has products for the most demanding project specifications. In public buildings, in the workplace, and in homes, at the end of the day Schlage stands for one thing: strong.

More than secure

Known for durability and dependability throughout the complete portfolio of mechanical, electronic and portable solutions, Schlage lock products also offer convenience and, above all else, security. But, we understand that choosing a lock is about more than security. It's about helping you be efficient, reducing maintenance, and creating a key system that can be managed efficiently so that security can be assured every day with solutions you can trust. Schlage portable systems do just that by providing durable products that withstand abuse, time, and weather. Apply them as part of your overall master keyed system or independently. When you choose Schlage lock products, you can be sure you've done the job right, the first time.



One key convenience

Schlage portable security products provide single-key convenience throughout any facility or security area. These locks can be master keyed into any new or existing Schlage key system, allowing you to integrate padlocks with door hardware and eliminating the need for separate keys. These products are also available in Everest 29™ restricted keyways or as part of the Primus® XP program for applications that require extra security.



Education

- Perimeter security
- Storage facilities
- Athletic equipment storage
- Gym, auditorium, cafeteria seating
- Cafeteria food storage
- Utility/mechanical control cabinets
- Janitorial storage
- Classroom mechanical and electronic equipment immobilization



Airport

- Perimeter security
- Equipment storage facilities
- Utility mechanical control cabinets
- Janitorial storage
- Fuel distribution and storage
- Retail/kiosk security and immobilization



Commercial job site

- Perimeter security
- Outbuildings/storage facilities
- Office/model home
- Tools and equipment



Transportation

- Perimeter security
- Storage facilities
- Containers






Retail loss prevention

- Kiosk security and immobilization
- Outdoor product displays
- Valuable indoor product displays
- Storage facilities



Healthcare

- Perimeter security
- Outbuildings/storage facilities
- Medical equipment storage
- Utility/mechanical control cabinets
- Cafeteria food storage

Administrative Security	Schlage Everest 29™				
	Primus® XP geographically exclusive side bit milling options	Schlage Classic	End user exclusive nationwide	4N	9N
			End user exclusive within time zone/country	4Z	9Z
			End user exclusive within zip code	3G	9G
			End user controlled; non-exclusive	3U	9U
			Dealer exclusive within time zone/country	2	8
			Dealer exclusive within zip code	1+	7
		Authorized dealer only; non-exclusive	1		
	End user controlled; non-exclusive				
	Authorized dealer only				
No authorization					
					
OPEN Schlage Classic FSIC and Conventional					
• Duplicate anywhere					
					
OPEN Schlage Everest 29 S FSIC and Conventional					
• Patented design					
• Check pin in cylinder					
					
RESTRICTED Schlage Everest 29 R ¹ SFIC, FSIC ² and Conventional ²					
Schlage Everest 29 T FSIC and Conventional					
• Requires letter of authorization					
• Patented design					
• Check pin in cylinder					
		Primus XP RESTRICTED Schlage Classic FSIC and Conventional			
		• 5 levels of side bit milling exclusivity			
		• Patent protection to 2024			
		• Independent sidebar and finger pin locking mechanisms			
		Primus XP RESTRICTED Schlage Everest 29 R FSIC ² and Conventional ²			
		Schlage Everest 29 S FSIC and Conventional			
		Schlage Everest 29 T FSIC and Conventional			
		• 5 levels of side bit milling exclusivity			
		• Patent protection to 2029			
		• Independent sidebar and finger pin locking mechanisms			
		UL 437 Option UL listed high-security option available for Primus XP Conventional cylinders			
		• Hardened steel drill pins			
		• Proven pick and drill resistant			
		• Withstands extreme physical attack			
Physical Security					
COMPARABLE ELECTRONIC SECURITY – Ensure your credential is as secure as your keyway					
Proximity credentials		MIFARE Classic® smart credentials		MIFARE Plus® and MIFARE® DESFire® EV1 smart credentials	
• Easily duplicated		• Secure encrypted data and communications		• Advanced data encryption makes duplication nearly impossible	
		• Difficult to duplicate		• Most secure credentials available from Schlage	

1. Limited dealer controlled programs available.

2. FSIC and Conventional in the form of SL cylinders that accept an SFIC key.

Primus® XP access control and high security cylinders

The Primus® XP program is designed to allow the highest levels of security to be applied in buildings on doors where it counts most but still within a single keyway family making it easy to manage. Distribution of both cylinders and keys is tightly controlled and patent protection ensures keys cannot be copied.

Most facilities need higher levels of key control and physical security on at least a few openings. Large businesses with high-risk assets will want to apply the greatest precautions and may opt for end user controlled Primus XP cylinders with keys milled for their exclusive use on a national or regional basis. Mid-size and smaller facilities can gain the same benefits of key control on a more local level by engaging a locksmith who offers dealer exclusive Primus XP products. Buildings keyed to a Classic open keyway can upgrade security to Primus XP at critical points of entry to improve overall security.

Visit us.allegion.com for more information.

Primus XP program enhancements

- Enhanced physical security with patented independent, dual locking mechanisms
- Patent protection and unique key design makes unauthorized duplication nearly impossible
- Geographically exclusive key distribution
- Compatible to all Everest 29 and legacy Everest keyways
- Optional UL 437 listed cylinders are made to withstand extreme attack

Portable security

Heavy-duty performance for commercial applications

At Schlage, we know that every product you choose has to stand up to constant use and abuse without compromising security. Our full line of portable security products delivers tough protection on the job site or at your business, keeping your tools, equipment, supplies, and buildings safe and secure. A wide range of sizes, styles and finishes ensures you get the right lock for the job.

We don't compromise on security

The safety and security of your property and equipment is something we take very seriously. Every Schlage lock undergoes intensive testing including:

- Cycle tests
- Corrosion tests
- Resistance tests
- Impact tests

KS Series brass padlocks

- Meets or exceeds ASTM standards for standard steel shackle, shackle cutting- and corrosion-resistance
- Solid brass body resists corrosion for all-weather performance
- Molybdenum hardened steel shackle offers greater cut resistance
- Double deadbolt locking mechanism provides extra security
- Patented interchangeable shackle design allows for easy disassembly
- Standard cylinder features include:
 - Schlage conventional cylinder
 - 6-pin solid brass cylinder (pinned 5), keyed different
 - Classic obverse Schlage C keyway
 - Two nickel silver cut Schlage keys



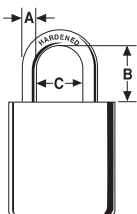
43 Series

23 Series

Body: 606 satin brass
Shackle: 625 bright chrome

Part #	Body size			Shackle dimension			Shackle dimension (metric)			Cylinder type	Case pack	Master pack
	Width	Height	Depth	A	B	C	A	B	C			
Keyed different												
KS23D2300	1 ²⁵ / ₃₂ "	2 ³ / ₁₆ "	7⁄8"	5⁄16"	1½"	¾"	8 mm	38 mm	19 mm	Conventional	6	24
KS23F2300	1 ²⁵ / ₃₂ "	2 ³ / ₁₆ "	7⁄8"	5⁄16"	2"	¾"	8 mm	51 mm	19 mm	Conventional	6	24
KS43D2300	1 ¹⁵ / ₁₆ "	2 ³ / ₁₆ "	7⁄8"	3⁄8"	1½"	¾"	9.5 mm	38 mm	19 mm	Conventional	6	24
KS43F2300	1 ¹⁵ / ₁₆ "	2 ³ / ₁₆ "	7⁄8"	3⁄8"	2"	¾"	9.5 mm	51 mm	19 mm	Conventional	6	24
Less cylinder - Conventional ¹												
KS23D2200	1 ²⁵ / ₃₂ "	2 ³ / ₁₆ "	7⁄8"	5⁄16"	1½"	¾"	8 mm	38 mm	19 mm	Conventional	6	24
KS23F2200	1 ²⁵ / ₃₂ "	2 ³ / ₁₆ "	7⁄8"	5⁄16"	2"	¾"	8 mm	51 mm	19 mm	Conventional	6	24
KS43D2200	1 ¹⁵ / ₁₆ "	2 ³ / ₁₆ "	7⁄8"	3⁄8"	1½"	¾"	9.5 mm	38 mm	19 mm	Conventional	6	24
KS43F2200	1 ¹⁵ / ₁₆ "	2 ³ / ₁₆ "	7⁄8"	3⁄8"	2"	¾"	9.5 mm	51 mm	19 mm	Conventional	6	24
Less cylinder - FSIC ¹												
KS43D3200	1 ¹⁵ / ₁₆ "	2 ³ / ₁₆ "	7⁄8"	3⁄8"	1½"	¾"	9.5 mm	38 mm	19 mm	FSIC	6	24
KS43F3200	1 ¹⁵ / ₁₆ "	2 ³ / ₁₆ "	7⁄8"	3⁄8"	2"	¾"	9.5 mm	51 mm	19 mm	FSIC	6	24

1. Less cylinder padlocks ship without a cylinder. Driver and all other internal padlock parts are included.



Shackle dimensions

KS Series steel padlock

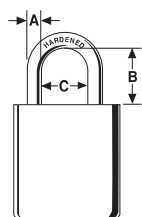
- Meets or exceeds ASTM standards for standard steel shackle, shackle cutting- and corrosion-resistance
- Case hardened solid steel body resists impact
- Molybdenum hardened steel shackle offers greater cut resistance
- Double deadbolt locking mechanism provides extra security
- Patented interchangeable shackle design allows for easy disassembly
- Standard cylinder features include:
 - Schlage conventional cylinder
 - 6-pin solid brass cylinder (pinned 5), keyed different
 - Classic Obverse Schlage C keyway
 - Two nickel silver cut Schlage keys



72 Series

Body: 626 satin chrome
Shackle: 625 bright chrome

Part #	Body size			Shackle dimension			Shackle dimension (metric)			Cylinder type	Case pack	Master pack
	Width	Height	Depth	A	B	C	A	B	C			
Keyed different												
KS72F2300	2 ⁵ / ₈ "	2 ³ / ₈ "	1 ³ / ₃₂ "	7/ ₁₆ "	2"	7/ ₈ "	11 mm	51 mm	22 mm	Conventional	6	18



Shackle dimensions

KS Series chrome-plated brass padlocks

- Meets or exceeds ASTM standards for standard steel shackle, shackle cutting- and corrosion-resistance
- Chrome-plated solid brass body resists corrosion for all-weather performance
- Molybdenum hardened steel shackle offers greater cut resistance
- Double deadbolt locking mechanism provides extra security
- Patented interchangeable shackle design allows for easy disassembly
- Offered less cylinder, made to fit Small Format Interchangeable Cores (SFIC)
 - Compatible with Schlage, Falcon, Best, Master Lock and Arrow SFIC cylinders



21 Series

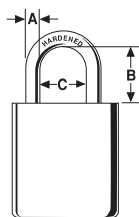


41 Series

Body: 625 bright chrome
Shackle: 625 bright chrome

Part #	Body size			Shackle dimension			Shackle dimension (metric)			Cylinder type	Case pack	Master pack
	Width	Height	Depth	A	B	C	A	B	C			
Less cylinder ¹												
KS11D1200	1 ²⁵ / ₃₂ "	2 ³ / ₁₆ "	7/8"	1/4"	1½"	¾"	6.4 mm	38 mm	19 mm	SFIC	6	24
KS11F1200	1 ²⁵ / ₃₂ "	2 ³ / ₁₆ "	7/8"	1/4"	2"	¾"	6.4 mm	51 mm	19 mm	SFIC	6	24
KS21D1200	1 ²⁵ / ₃₂ "	2 ³ / ₁₆ "	7/8"	5/16"	1½"	¾"	8 mm	38 mm	19 mm	SFIC	6	24
KS21F1200	1 ²⁵ / ₃₂ "	2 ³ / ₁₆ "	7/8"	5/16"	2"	¾"	8 mm	51 mm	19 mm	SFIC	6	24
KS41D1200	1 ¹⁵ / ₁₆ "	2 ³ / ₁₆ "	7/8"	3/8"	1½"	¾"	9.5 mm	38 mm	19 mm	SFIC	6	24
KS41F1200	1 ¹⁵ / ₁₆ "	2 ³ / ₁₆ "	7/8"	3/8"	2"	¾"	9.5 mm	51 mm	19 mm	SFIC	6	24

1. Product is shipped without cylinder. For cylinder and keying options, refer to your Schlage price book.



Shackle dimensions

KC Series locking cables

- Braided steel, vinyl coated cable provides greater cut-resistance than twisted cable
- Integrated die-cast zinc locking head (619 satin nickel finish)
- Offered less cylinder, made to fit Small Format Interchangeable Cores (SFIC)
 - Compatible with Schlage, Falcon, Best, Master Lock and Arrow SFIC cylinders



Part #	Cable size		Cable size (metric)		Cylinder type	Case pack	Master pack
	Length	Diameter	Length	Diameter			
Less cylinder ¹							
KC215A130	2'	5/8"	60 cm	15 mm	SFIC	1	5
KC215B130	4'	5/8"	120 cm	15 mm	SFIC	1	5

¹ Product is shipped without cylinder and with driver. For cylinder and keying options, refer to your Schlage price book.

Security chains and padlocks

- Triple heat-treated boron manganese steel chain
- Recommended for use with KS72F2300 solid steel padlock

Part #	Chain size	Chain size (metric)	Shackle dimension			Shackle dimension (metric)			Cylinder type	Case pack	Master pack
	Length	Length	A	B	C	A	B	C			
Chain only (no cover)											
999478	5'	150 cm	N/A	N/A	N/A	N/A	N/A	N/A	N/A	1	1
999461	3' 3"	100 cm	N/A	N/A	N/A	N/A	N/A	N/A	N/A	1	1



Padlock sold separately

Note: 1) For master keyed or keyed alike product, order chain and padlocks separately.

Order chains #999478 or #999461 with padlock KS72F 2300. Prices are for chains only. Chains and padlocks must be ordered separately.

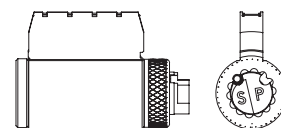
KS and KC Series cylinders

Conventional

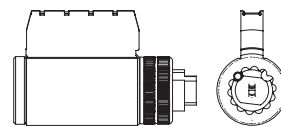
Cylinder mechanism	KS Series part number	KC Series part number
Standard pin and tumbler	47-413	47-414
Primus® XP	47-743-XP	47-744-XP
Primus XP UL437	47-542-XP	47-543-XP



Conventional



KS Series



KC Series

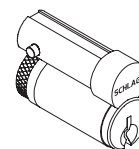
Full Size Interchangeable Core (FSIC)

Schlage Full Size Interchangeable Core (FSIC) configured locks allow immediate rekeying simply by using a special control key to replace the core. Available in KS43 Series, FSIC cylinders can be used with any 5 or 6-pin Schlage key system.

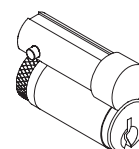
Cylinder mechanism	Part number
Standard pin and tumbler	23-030
Standard pin and tumbler less logo	23-031
Primus® XP	20-740-XP
Primus XP less Schlage logo	20-741-XP



FSIC



23-030



23-031

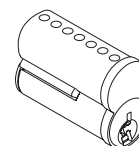
Small Format Interchangeable Core (SFIC)

The SFIC option is designed for Everest® 29 R restricted keyway family. Based on an industry standard SFIC design, Schlage locks configured for use with SFIC cylinders will also work with Best, Falcon, and other small format interchangeable cores.

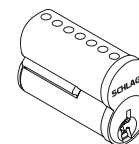
Description	Part number
7-pin uncombined Everest 29 R family restricted keyways	80-036
7-pin combined Everest 29 R family restricted keyways	80-037
6-Pin uncombined Falcon/Best keyways	80-043
7-Pin uncombined Falcon/Best keyways	80-033



SFIC



80-033

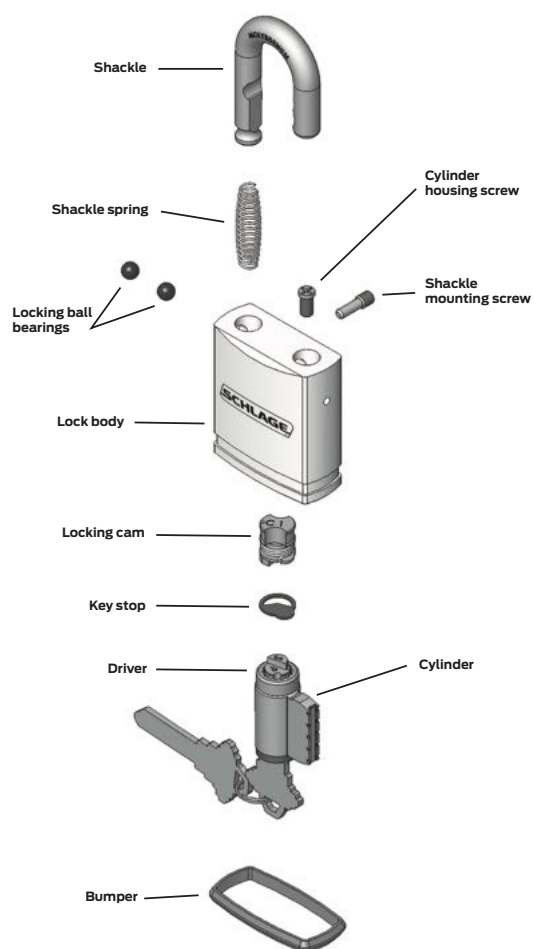


80-037

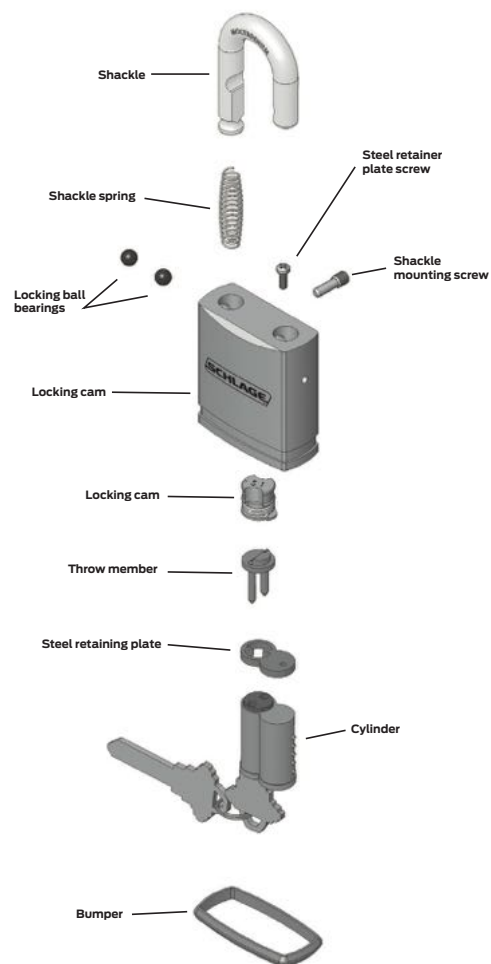
- Notes:
- 1) Falcon and Primus cylinders will ship separately.
 - 2) Control keys must be ordered separately.
 - 3) Specify keyway for existing systems.
 - 4) 80-033 and 80-043 cores are available in Best keyways. Specify keyway using B suffix:
AB = A, BB=B, CB=C, DB = D, DDB=DD, EB = E, FB = F, GB = G, HB = H, JB = J, KB = K,
LB = L, NB=N, MB = M, RB=R, TBB=TB, TDB=TD, QB=Q.
 - 5) 80-036 and 80-037 restricted keyway cores require a letter of authorization from the end user.
 - 6) For details see Keys and Keying section of your Schlage price book.

KS Series padlock parts

Conventional key-in-knob

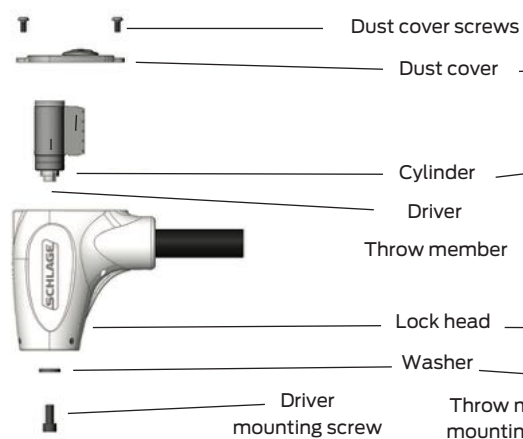


Small Format Interchangeable Core

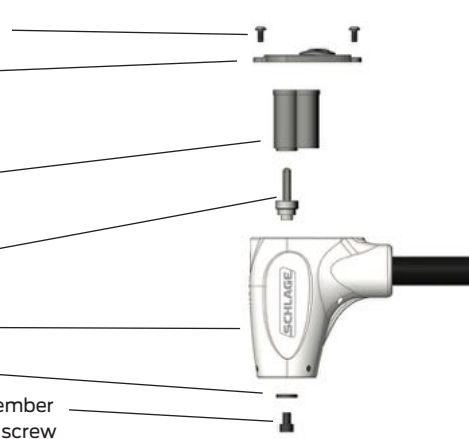


KC Series cable

Conventional key-in-knob



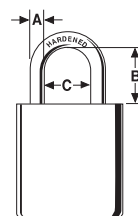
Small format interchangeable core



Parts and accessories - replacement shackles



Shackle dimensions



Part #	Shackle Dimension			Shackle Dimension (metric)			Box qty	Carton qty
	A	B	C	A	B	C		
Hardened steel shackles - for use with 20 Series padlocks								
KZ11D20	5/16"	1½"	¾"	8 mm	38 mm	19 mm	6	36
KZ11G20	5/16"	4"	¾"	8 mm	102 mm	19 mm	6	36
Hardened steel shackles - for use with 40 Series padlocks								
KZ11F40	¾"	2"	¾"	9.5 mm	51 mm	19 mm	6	36
KZ11G40	¾"	4"	¾"	9.5 mm	102 mm	19 mm	6	36
Brass shackles - for use with 20 Series padlocks								
KZ12D20	5/16"	1½"	¾"	8 mm	38 mm	19 mm	6	36
KZ12G20	5/16"	4"	¾"	8 mm	102 mm	19 mm	6	36
Brass shackles - for use with 40 Series padlocks								
KZ12D40	¾"	1½"	¾"	9.5 mm	38 mm	19 mm	6	18
KZ12G40	¾"	4"	¾"	9.5 mm	102 mm	19 mm	6	18
Accessories								
Stainless steel shackles - for use with 20 Series padlocks								
KZ13D20	5/16"	1 ½"	¾"	8mm	38mm	19mm	6	36
KZ13F20	5/16"	2"	¾"	8mm	51mm	19mm	6	36
Stainless steel shackles - for use with 40 Series padlocks								
KZ13D40	¾"	1 ½"	¾"	9.5mm	38mm	19mm	6	36
KZ13F40	¾"	2"	¾"	9.5mm	51mm	19mm	6	36

CL Series cabinet locks

Schlage CL Series cabinet locks use Schlage cylinders that can be master keyed to door hardware for single-key convenience in both new and existing systems. Designed for door, drawer, or cabinets and utility cabinets, the locks are also available with Primus XP key control and UL437 high-security cylinders for added security.

CL Series cabinet lock

- Cylinder retaining screw for quick, easy rekeying
- $\frac{3}{4}$ " to $\frac{15}{16}$ " throw steel deadbolt for reliable strength
- Solid brass cylinder for toughness
- Primus XP key control cylinders
- Primus XP UL 437 high-security cylinders

CL Series drawer lock

- $\frac{3}{4}$ " throw steel deadbolt for optimum toughness
- Solid brass cylinder for added strength
- Primus XP key control cylinders
- Primus XP UL 437 high-security cylinders

Cabinet locks with cylinder

Cabinet deadbolt locks



CL100PB

Cylinder formats:

CL100PB - Conventional format

Interchangeable Core formats:
CL777R - Full Size IC (FSIC)
CL721G - Small Format IC (SFIC)
Rekeying: Release mechanism allows Conventional cylinder replacement. Interchangeable cores replaced using control key

Certifications: ANSI 156.11 - Conventional Grade 1; FSIC and SFIC Grade 2

Body: Die cast zinc

Bolt: Steel $1\frac{5}{16}$ " projection; $\frac{3}{4}$ " SFIC

Door thickness: $\frac{7}{8}$ " to $1\frac{3}{8}$ "

Barrel diameter: $1\frac{1}{8}$ "

Finishes: Conventional and FSIC formats - 605 and 626; SFIC format - 626 only

Drawer deadbolt locks



CL771G

Cylinder formats:

CL200PB - Conventional format

Interchangeable Core formats:
CL888R - Full Size IC (FSIC)
CL771G - Small Format IC (SFIC)
Rekeying: Release mechanism allows Conventional cylinder replacement. Interchangeable cores replaced using control key

Certifications: ANSI 156.11 - Conventional Grade 1; FSIC and SFIC Grade 2

Body: Die cast zinc

Bolt: Steel $\frac{3}{4}$ " projection

Door thickness: $\frac{7}{8}$ " to $1\frac{3}{8}$ "

Barrel diameter: $1\frac{1}{8}$ "

Finishes: Conventional and FSIC formats - 605 and 626; SFIC format - 626 only

Rim deadbolt lock



CL775G

Interchangeable Core format:

CL775G - Small Format IC (SFIC)

Rekeying: Interchangeable core replaced using control key

Body: Die cast zinc cylinder housing, stamped steel back plate and steel case

Bolt: $\frac{1}{2}$ " projection

Material thickness: up to $1\frac{1}{16}$ "

Barrel diameter: $1\frac{1}{8}$ "

Compatibility: Retrofits Best 5L Series

Finish: 626

Rim latch



CL725G

Interchangeable Core format:

CL725G - Small Format IC (SFIC)

Rekeying: Interchangeable core replaced using control key

Body: Die cast zinc cylinder housing, stamped steel back plate and steel case

Material thickness: up to $1\frac{1}{16}$ "

Barrel diameter: $1\frac{1}{8}$ "

Compatibility: Retrofits Best 5L Series

Finish: 626

Cam locks



CL920R

Interchangeable Core formats:
CL920R - Full Size IC (FSIC)
CL720G - Small Format IC (SFIC)
Rekeying: Interchangeable core replaced using control key

Body: Die cast zinc

Body diameter: $1\frac{1}{8}$ "; across flats $\frac{7}{8}$ "

Mounting cutout: $1\frac{5}{32}$ "

Material thickness: .08" to $1\frac{1}{8}$ "

Finish: 626

Ratchet locks



CL729G

Interchangeable Core formats:
CL929R - Full Size IC (FSIC)
CL729G - Small Format IC (SFIC)
Rekeying: Interchangeable core replaced using control key

Body: Die cast zinc

Body diameter: $1\frac{1}{8}$ "

Material thickness: up to $\frac{1}{4}$ "

Finish: 626

Mailbox lock



CL728G

Interchangeable Core format:

CL728G - Small Format IC (SFIC)

Rekeying: Interchangeable core replaced using control key

Body: Die cast zinc housing; steel body

Barrel length: Adjustable

Handing: RH standard

Retrofits: Best BL

Finish: 626

Keying options

Large format keying:

Conventional and FSIC cylinder formats available in standard pin and tumbler, Primus XP and Primus XP UL 437 high-security mechanisms. Everest 29 S123 keyway standard. Classic and restricted keyways also available.

Small format keying:

SFIC cylinder format available in standard pin and tumbler mechanism (A2 pinning); Everest 29 R keyway.

Available keyed alike (KA), keyed different (KD) and master keyed.

FSIC and SFIC construction cores available.

Finishes

Bright brass 605

Satin chrome 626



About Allegion

Allegion (NYSE: ALLE) is a global pioneer in safety and security, with leading brands like CISA®, Interflex®, LCN®, Schlage®, SimonsVoss® and Von Duprin®. Focusing on security around the door and adjacent areas, Allegion produces a range of solutions for homes, businesses, schools and other institutions. Allegion is a \$2 billion company, with products sold in almost 130 countries.

For more, visit www.allegion.com

KRYPTONITE ■ LCN ■  ■ STEELCRAFT ■ VON DUPRIN