



YE SERIES SEABROOK



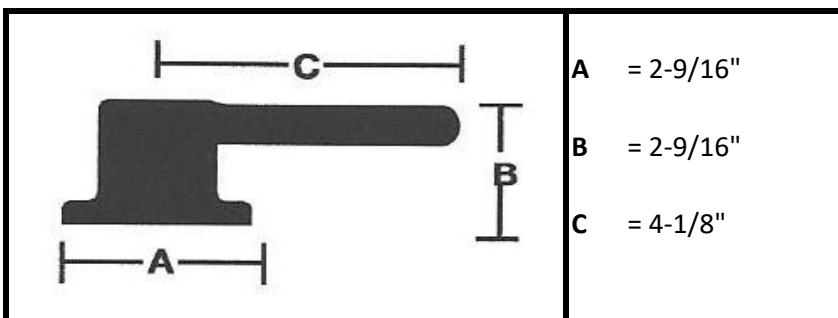
Standard Specifications:

Door Prep	Cross bore: 2-1/8" Edge Bore: 1" Latch face: 1" x 2-1/4" RC
Door Thickness	1-3/8" to 1-3/4" doors
Latch	
Std product	Tubular 2-3/8" and 2-3/4" RC adjustable Tubular Drive-in latch available
ADA product	Cylindrical 2-3/8" and 2-3/4" RC adjustable
Strike	1-3/4" x 2-1/4" Radius Corner Full lip strike
Door Handing	Reversible Levers
Cylinder	5 Pin KW-1 Compatible
Keying	KA5 std; other options available

Features

- Meets or exceeds Grade 3 standards
- Std latch/strike screw is combination wood/metal screw
- Dust Box included

Dimensions:



Model	Function	CTN QTY	ItemNumber	
			Oil Rubbed Bronze	Satin Nickel
SB81	Dummy	20	SBD10BP	SBD15
SB71	Entry	20	SBE10BP6	SBE156
SB21	Privacy	20	SBPR10BP	SBPR15
SB11	Passage	20	SBPA10BP	SBPA15