

New Products

Season 2024

Private

Label by

Quality Works



CUBE ALU

Designed by Dick Björk



Cube Alu Lounge Chairs with Conversation Table, Ceramic Top



Cube Alu Stacking Rope Club Chairs with Cube Fire Table



Cube Alu Stacking Side Chair



Cube Alu Stacking Rope Chair



Cube Alu Stacking Rope Side Chair



Cube Alu Stacking Rope Club Chair



Cube Alu 3-Seater



Cube Alu Counter Height Arm Chair



Cube Alu Counter Height Side Chair



Cube Alu Counter Height Table, Teak Top
67" x 31" | 170 cm x 79 cm



6 seats



Cube Alu Conversation Table Ceramic Top
Ø47" | Ø120 cm



CUBE

Designed by Dick Björk

Cube Modular Lounge Chair



Cube Conversation Table
Ceramic Top
Ø47" | Ø120 cm



Cube Kitchen Trolley



Supplied with sink, faucet and stainless steel worktop. Can be supplied with cut-outs for induction or gas stove tops.

Cube Teak Trash Receptacle
Side Opening
(New Dimension) Ø20" | Ø51 cm



Designed to fit
76 L/20 us gal
plastic bags

Cube Teak Trash Receptacle
Top Opening
(New Dimension) Ø20" | Ø51 cm



Designed to fit
76 L/20 us gal
plastic bags

Cube Table Top Planter
Ø9.2" | Ø23 cm



Cube Hanging Planter
Ø9.2" | Ø23 cm



Cube Wall Planter
Ø9.2" | Ø23 cm



CAMBRIDGE

Designed by Povl Eskildsen



Cambridge Wicker
Arm Chair



Cambridge Wicker
Side Chair



Fitted with ceramic top
Tumbled
lava rocks

Cambridge Fire Table
Ø44" | Ø112 cm

LPG/propane fuelled
North America: CSA certified 50000 BTU
European Union: CE certified 40000 BTU
Designed of use with 20 lbs or 10 kg tanks

MAYA

Designed by Povl Eskildsen



Maya Rope
Dining Side Chair



Maya Wicker
Dining Side Chair



Maya Sling
Club Side Chair



MAYA

Designed by Povl Eskildsen

Maya Wicker Club
Side Chair



Maya Wicker Deck Chair
with Integrated Footstool



5 positions

with footstool
stowed below
seat

Maya Wicker
Sun Lounger



5 positions



Maya Wicker Club
Side Chair with Wicker Ottoman



Maya Wicker Deck Chair
with Integrated Footstool



Maya Wicker Sun Lounger

VERA

Designed by Povl Eskildsen

Vera Square Dining Table

43" x 43" | 109 cm x 109 cm



4 seats



Vera Butterfly Extending Table

(New Dimension) 63"/ 100"x 39" | 160/254 cm x 100 cm



6-10 seats



Vera Counter Height Table

79" x 31.5" | 200 cm x 80 cm



8 seats



Vera Counter Height Table

60" x 31.5" | 152 cm x 80 cm



6 seats



Vera Large Square Coffee Table, High

28" x 28" x H. 17" | 109 cm x 109 cm x H. 44cm



Vera Large Square Coffee Table, Low

28" x 28" x H. 13" | 109 cm x 109 cm x H. 33cm



VERA ALU

Designed by Povl Eskildsen

Vera Alu Sun Lounger



5 positions

Vera Alu Square Dining Table

43" x 43" | 109 cm x 109 cm



4 seats

Vera Alu Butterfly Extending Table

(New Dimension) 63"/ 100"x 39" | 160/254 cm x 100cm



conventional
6-10 seats

Vera Alu Counter Height Table

79" x 31.5" | 200 cm x 80 cm



6 seats

Vera Alu Counter Height Table

60" x 31.5" | 152 cm x 80 cm



6 seats

Vera Alu Large Square Coffee Table, High

28" x 28" x H. 17" | 109 cm x 109 cm x H. 44cm



1 seat

Vera Alu Large Square Coffee Table, Low

28" x 28" x H. 13" | 109 cm x 109 cm x H. 33cm



1 seat

STELLA

Designed by Povl Eskildsen



Stella Club Chair, Cushions



Stella Modular 3 Seater Sofa



Stella Modular Corner Unit



Stella Sun Lounger

5 positions



Optional
Rope
Basket.

Leg section can
be adjusted in
two positions.

SALLING ALU

Designed by Povl Eskildsen

Salling Alu Dining Chair with Teak Arms and Rope seat



Salling Alu Dining Chair with Teak Arms and Danish Cord seat



Salling Alu Dining Chair without Teak Arms and Rope Seat



Salling Alu Dining Chair without Teak Arms and Danish Cord Seat



Seat Pad for Salling and Salling Alu Chair



Seat Pad for Salling and Salling Alu Chair, Hand Croched



Salling Alu Dining Chair without Teak Arms and Rope Seat with Jeberg Round Dining Table

KRIS

1962

3



Johs. Nørgaard, Rødning, med Christiansstolen, som en tysker havde efterlignet og solgte billigere.

landske fabrikanter er godt med. Flere af deres ting, f. eks. lamper, der lignede æggebakker, var virkelig nydelige ting.

Rødning stole — og plagiat

Brdr. Nørgaard, Rødning og Skodborg, var for første gang med på Kølnudstillingen, og det var virkelig gode ting, de mødte med. Deres stole, teaktræ med moderne tilsnit og forsynet med

et sort stof på sædet, vakte opmærksomhed og der blev solgt hundredevis af dem, inden udstillingen sluttede.

- * Johs. Nørgaard forklarede, at
- * når tyskerne kom fik de altid
- * forklaret hvilken kvalitet st-
- * len var i, samt at de kunne
- * få dens plagiat for billigere
- * penge hos en tysk fabrikant.
- * Det viste sig dog, at der sta-

* dig er interesse for de ægte
* stole i Tyskland.

Firmaet fra Rødning havde et stort areal til rådighed, og det blev udnyttet godt, idet man havde lavet en indbydende stue af det. En skænk fra det firma hørte så afgjort til de bedste ting på den danske udstilling.

Brdr. Nørgaard har kun arbejdet som møbelfirma i et år og den stol, som havde så stor succes, hedder Christiansstolen, der i forvejen er kendt herhjemme fra møbeludstillinger. Man er ualmindelig godt tilfreds med forløbet af denne udstilling.

Vamo i Sønderborg mødte med den samme udstilling som på Erhvervsudstillingen i Åbenrå sidste efterår. — Det er gode kvalitetsmøbler, men man savner lidt fornyelse i udstillingen. Handlen gik imidlertid godt, og også dette firma måtte se tyske værksteder, der havde lavet nydelige plagier af de mest kendte møbler.

Kaj Boisen-abe med få ændringer

Contact i Tønder havde en meget stor udstilling, men indholdet var lidt for broget. — Man faldt over en abe, som lignede Kaj Boisens verdenskendte abe i forbausende grad. Den eneste synlige ændring var, at mens Kaj Boisens abe har strittende hår, er Tønder-aben forsynet med paryk.

Firmaet havde flere gode og smukke ting med, men helhedsindtrykket var ødelagt ved en flov opsætning. Køln-udstillingen er salgsudstilling, men på en sådan må man forlange, at der også gøres noget ud af selve udstillingen, og ikke bare fylde hylder med så mange figurer som muligt. Contact arbejder med moderne figurer forarbej-

Kris Arm Chair, Teak Seat



Kris Side Chair, Teak Seat



Kris Arm Chair, Wicker Seat



Kris Side Chair, Wicker Seat



1962 newspaper article on the launch of the Christian Chairs

ADIRONDACK

Designed by Povl Eskildsen



Neo Adirondack Chair



Neo Adirondack Footstool



Neo Adirondack Side Table

17.5" x 17.5" | 45 cm x 45 cm



ELLEN ALU

Designed by Povl Eskildsen



Ellen Alu Sling
Dining Side Chair



ELEMENTS

Elements Backless Bench, Small 4' | 125 cm



Elements Backless Bench, Large 6.7' | 204 cm



ELEMENTS ALU

Elements Alu Backless Bench,
Small 4' | 125 cm



Elements Alu Backless Bench,
Large 6.7' | 204 cm



Elements Alu Rectangular Dining Table
Alu Top

97" x 39" | 240 cm x 100 cm



8 seats

Elements Alu Rectangular Dining Table
Alu Top

64" x 39" | 160 cm x 100 cm



6 seats

OPTI

Designed by Dick Björk

Opti Deck Chair
with Integrated Footstool

3 positions



Opti Rectangular Dining Table
Ceramic Top
63" x 39" | 160 cm x 100 cm

6 seats



Opti Rectangular Dining Table
Teak Top
63" x 39" | 160 cm x 100 cm

6 seats



Opti Lumens Side Table with
Integrated Light
Ø20" | Ø50 cm

4 seats



Opti Deck Chair
with Integrated Footstool



Opti Lumens Side Table with
Integrated Light

ELEANOR

Designed by Susanne Grønlund

Eleanor Sling Dining Chair



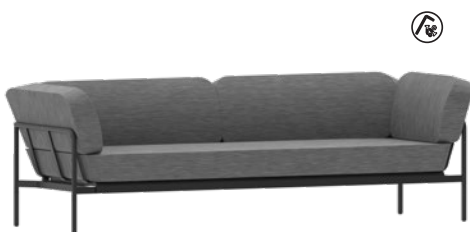
Eleanor Woven Dining Chair



Eleanor Lounge Chair



Eleanor 3 Seater



Eleanor Modular, Left Unit



Eleanor Modular, Right Unit



Eleanor Modular Corner Unit



Eleanor Dining Table, Teak Top
87" x 39" | 220 cm x 100 cm



8 seats

Eleanor Dining Table, Ceramic Top
87" x 39" | 220 cm x 100 cm



8 seats

Eleanor Dining Table, Teak Top
63" x 39" | 160 cm x 100 cm



6 seats

ELEANOR

Designed by Susanne Grønlund

Eleanor Dining Table, Ceramic Top

63" x 39" | 160 cm x 100 cm



6 seats

Eleanor Square Dining Table, Teak Top

(New Dimension) 31.5" x 31.5" | 80 cm x 80 cm



4 seats

MIMPI

Mimpi Round Universal Seat Pad

Ø16.5" | Ø42 cm



Mimpi Square Universal Seat Pad

16.5" x 16.5" | 42 cm x 42 cm



LUNA

Luna Scatter Cushion
24" x 24" | 60 cm x 60cm



Luna Scatter Cushion
20" x 20" | 50 cm x 50cm



Luna Scatter Cushion
16" x 16" | 40 cm x 40cm



Luna Scatter Cushion
24" x 16" | 60 cm x 40 cm



Luna Square Universal Seat Pad
16.5" x 16.5" | 42 cm x 42 cm



Luna Round Universal Seat Pad
Ø16.5" | 42 cm



Luna Cushion for Sun Lounger
24" x 16" | 60 cm x 40 cm



Luna Optional Headrest
for Cushions Sun Lounger
20" x 22" | 50 cm x 55 cm



BAYA

Designed by Povl Eskildsen



Baya Square Teak Umbrella 240 cm 240 cm
with Umbrella Base



Baya Round Teak Umbrella
Ø8' | Ø250 cm



Baya Square Teak Umbrella
8' x 8' | 240 cm x 240 cm



Baya Round Bistro Umbrella
Ø6 1/2' | Ø200 cm





Baya Square Bistro Umbrella
6' x 6' | 190 cm x 190 cm



Baya Round Contract Umbrella
Ø8' | Ø250 cm

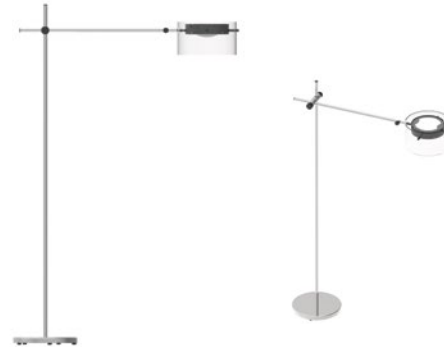


Baya Square Contract Umbrella
8' x 8' | 240 cm x 240 cm



BERSERI

Berseri Floor Standing Lamp
41" x 14" | 104 cm x 36 cm



ACCESSORIES

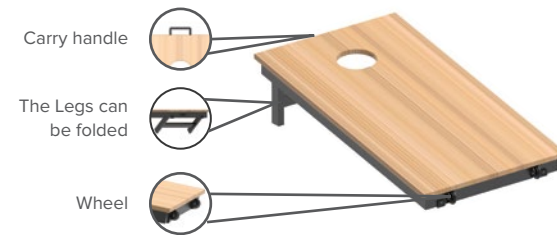
Corn Hole Set



Board 1 pcs



Sacks 10 pcs



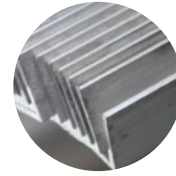
The Corn Hole set is supplied in a practical carry bag and two pouches.



MATERIALS



Teak



Aluminium



Stainless Steel

Powder Coating

Our powder coats are durable outdoor grade polyester-based finishes that are electrostatically applied to the substrate. Aluminium substrates are chemically pre-treated, while stainless substrates are mechanically and chemically pre-treated.



Charcoal



Slate



Anthracite



Nimbus Grey



Sand



Taupe



Linen



White



Ocean



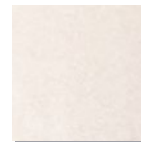
Olive Green



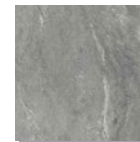
Turquoise

Ceramic

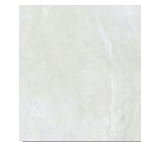
Its ability to withstand the elements and its unique hardwearing and scratch-resistant nature makes ceramic an excellent choice for an attractive, yet low-maintenance table top.



Beige



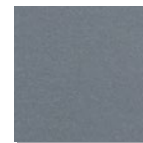
Slate



Winter

High-Pressure Laminate

A great alternative to ceramic, aluminium and teak tops, our high pressure laminate is UV resistant. This ensures maximum durability. Unsupported HPL will warp over time. Therefore, all our HPL tops are supported by a rigid metal frame.



HPL Anthracite

MATERIALS

Sling-able Fabrics

We source our cushion and sling-able fabrics from reputable suppliers around the globe. In addition to our stock Sattler/Outdura®, Agora®, Sunbrella®, Phifertex® and Sunproof® fabrics, customers can specify specific fabrics for use on their orders.

Sling: Grade A



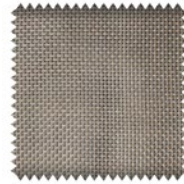
Charcoal ¹



Navy ¹



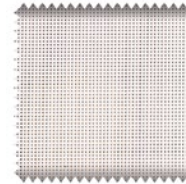
Sand ¹



Mocca ¹



Linen ¹



Chalk ¹



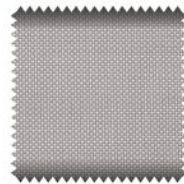
Winter ¹



Slate ²



Jute ²



Platinum ²



Ocean ²

custom
fabric on
request

Sling: Grade B



Anthracite ³

custom
fabric on
request

1. PVC/polyester
2. Blended polyester/PVC and polypropylene
3. Blended polyester/PVC and acrylic

MATERIALS

Awning Fabrics

The awning-grade fabrics fitted on our Baya umbrellas is made from 100% solution-dyed acrylic. In order to achieve the ultimate in performance, the fabric is back-coated with a waterproof coating that can withstand 2,000mm/79" of water column, then stitched together with a PTFE sewing thread that is impervious to acid rain, UV rays, chemicals and salt water.



Chalk
Acrylic with
Back Coating



Rock
Acrylic with
Back Coating

Cushion Fabrics

We offer two constructions in outdoor cushions. Both are engineered in a manner that keeps rain water from soaking into the foam.

- Back coated fabrics (grade C and D), which are inherently waterproof to over 6000mm/236" of water column. Cushions made from uncoated fabrics (grade A and B) are equipped with an inner cover made from a breathable water barrier fabric that is
- water-proof to 400mm/16" of water column.

All our cushions have a fill that is built around a core of durable high quality foam that is free of calcium carbonate fillers that would otherwise result in premature failure of the foam.

Cushion: Grade A



Grey
Polypropylene



Winter
Polypropylene



NEW
Charcoal
Acrylic



NEW
Lava Grey
Acrylic



NEW
Platinum
Acrylic



Rock
Acrylic

custom
fabric on
request

Cushion: Grade B



Captain's Navy
Acrylic



Zinc
Acrylic



Pottery
Acrylic



Pesto
Acrylic

custom
fabric on
request

MATERIALS

Cushion: Grade C, Backcoated



Graphite
Acrylic with
Back Coating



Stone Grey
Acrylic with
Back Coating



Brisa
Acrylic with
Back Coating



Fossil
Acrylic with
Back Coating



Aqua
Acrylic with
Back Coating

Cushion: Grade D, Backcoated



Deep Chestnut
Acrylic with
Back Coating

custom
fabric on
request

Wicker

All our wickers are man-made, colourfast, UV resistant and recyclable. We use two types of man-made wicker: extruded high-density polyethylene (PE) and braided polypropylene (PP) rope. The wicking properties of polypropylene ensures that the rope, despite its fabric feel, will dry quickly after a downpour.

Regardless of the wicker used, its application onto any given frame is done by skilled craftsmen.

Rope



Black



Anthracite



Ocean



Sand

HDPE Wicker



Charcoal Loom



Natural Loom



Kubu



Jute

Danish Cord



Black



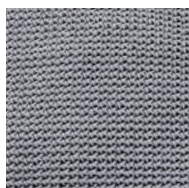
Natural



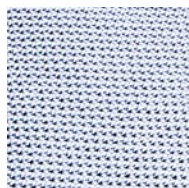
MATERIALS

Hand Crocheted Covers

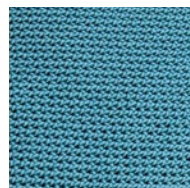
Our crochet covers are made from UV stabilised polypropylene yarns. The yarns are resistant to most solvents and have good colour fastness. The yarns have been tested to 3,000 hours of UV exposure and carry a 3 year warranty. The crochet covers are recycle-able and ROHS compliant.



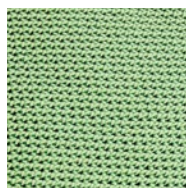
Silver



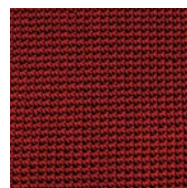
Ice Blue



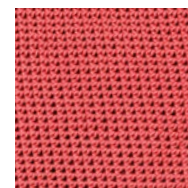
Turquoise



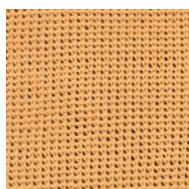
Nordic Green



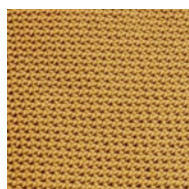
Maroon



Rose



Mustard



Gold



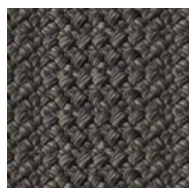
Navy



Anthracite

Rugs

Made from strands of braided UV resistant polypropylene, that are carefully stitched together, our rugs have been tested to 3,000 hours of UV exposure and carry a 3 year warranty.



Anthracite



Turquoise

DISCONTINUED MATERIALS

1. Powder Coating - Navy
2. Cushion Fabrics - Grade A, Ash
3. Cushion Fabrics - Grade A, Black
4. Cushion Fabrics - Grade A, Taupe
5. Wicker - Rope, Navy



www.q-works.net