

BE  
**SMART**  
TO  
**MARK**

## SM 3300

- Fast & Accurate Marking
- Light to Deep Marking
- Utmost Precision Marking
- Advanced Operating Software with Standard Features Inclusive of Serial Number, Password Arc marking, Time Zone & Date Marking etc.

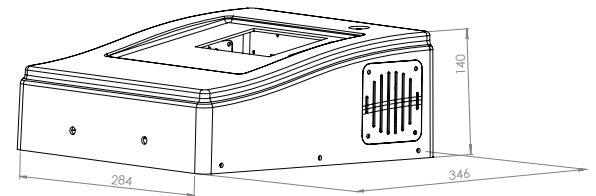
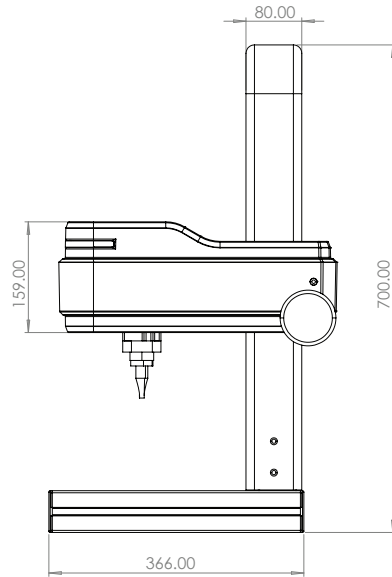
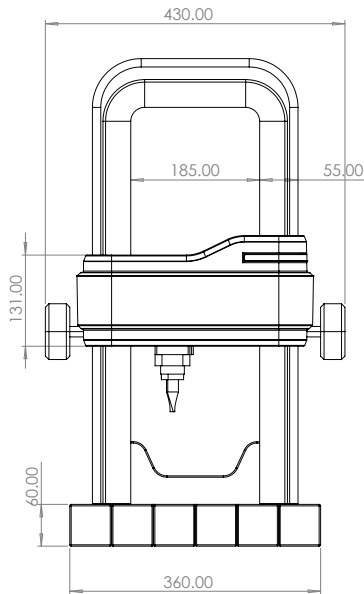


- Highly Configurable
- Durable Permanent Marks that Can Withstand in Tough Environments
- Flexible Marking Area
- Ball Screw Driven Mechanism for Precision Dot Marking.



[www.smartmarkingsolutions.com](http://www.smartmarkingsolutions.com)

Follow us –    



## Technical Specifications

Marking Area:	100mm x 100mm
Standard Character Sizes:	0.18mm - 99.9 mm in increments of 0.18mm
Marking Formed:	5 x 7, 7 x 9 or Varidot
Marking Speed:	Depends on application

America

Europe

India

South east Asia



# smartmark<sup>®</sup>

Smart Marking Solutions

[www.smartmarkingsolutions.com](http://www.smartmarkingsolutions.com)

**TOLL FREE : 1800 209 5050**

**Marks Technosystems Private Limited.**

**Corporate Office:** Plot No.10, Survey No. 81/5A/2, Bhagya Chintamani Nagar,  
Near NKGSB Bank, Paud Road, Kothrud, Pune - 411038. Maharashtra, India.  
Tel: +91-20-66743300 / 01 | Email: [info@smartmarkingsolutions.com](mailto:info@smartmarkingsolutions.com)

**Network:** Mumbai, New Delhi, Kolkata, Chennai, Ahmedabad,  
Bengaluru, Jamshedpur, Ludhiana, Indore, Pantnagar, Rajkot,  
Hyderabad, Coimbatore, Lucknow