



EXPANSIVE™
workspace

SmartSuite® Proposal Prepared For:

Aris Ai Inc

Marcello Gauss | (571) 426-8551
expansive.com | (877) 301-6217



Why Expansive?

At Expansive, we own the buildings we develop and operate. This allows us to share the incomparable advantages of a fully-integrated, nationwide property owner with our clients, including our four cornerstones of workspace success:

Vibrant Inclusivity

To foster community and build relationships

Maximum Stability

To establish confidence in an uncertain world

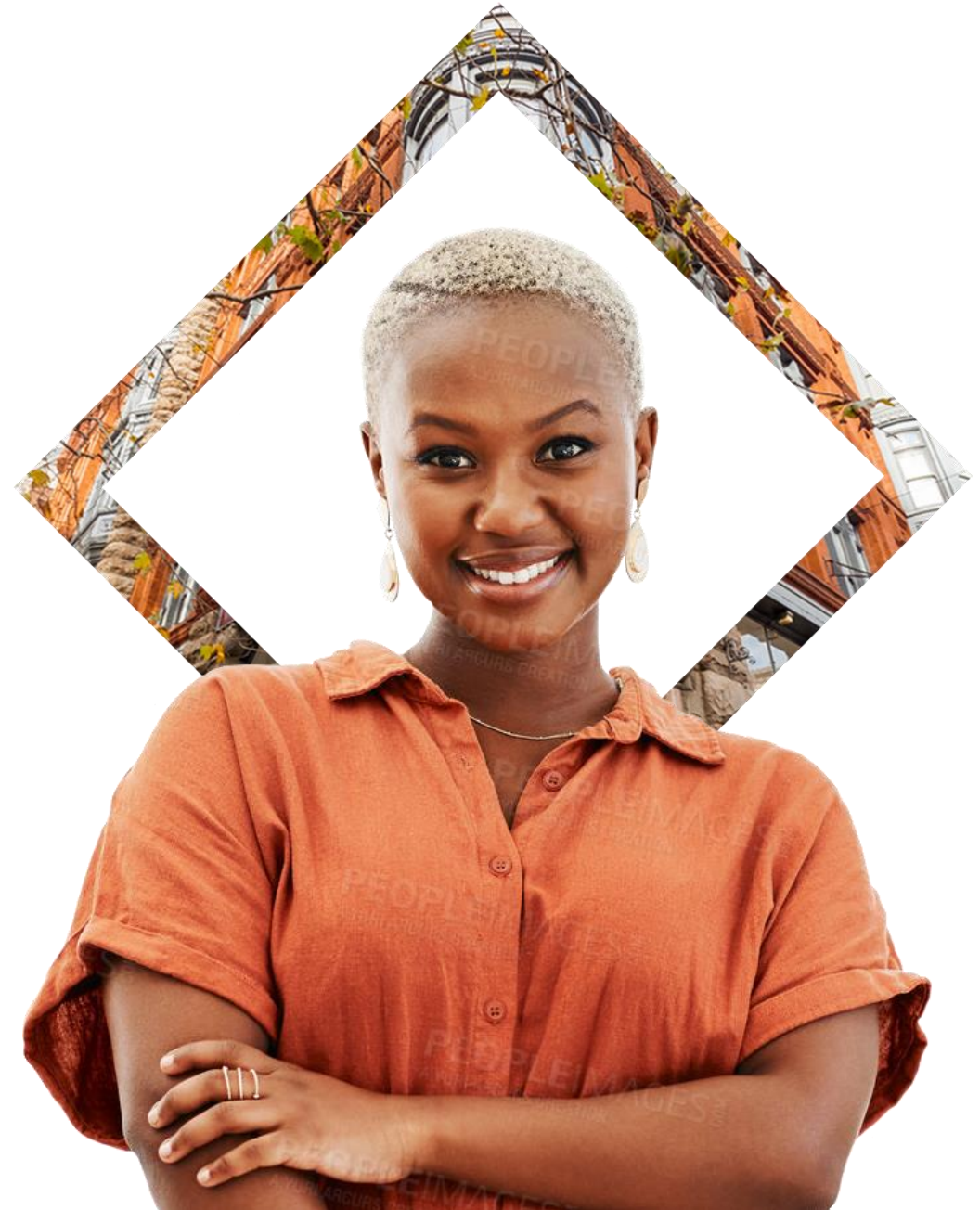
Unparalleled Flexibility

To realize your vision even as it evolves

Comprehensive Value

To drive cost efficiencies and trust

Enterprise Clients We Serve



Expansive Workspace Dupont Circle

1201 Connecticut Ave. N.W., Washington, D.C.

Strategically located just two blocks from Dupont Circle and two blocks from Farragut Square, this Expansive Workspace location offers proximity to the hotels, restaurants, and office buildings of Downtown D.C. and Dupont Circle. Featuring private offices, coworking, and Smart Suites™ for up to 100-person teams, Expansive Workspace Dupont Circle provides the latest technology and amenities for your company.

Shared Amenities

3 Conference Rooms

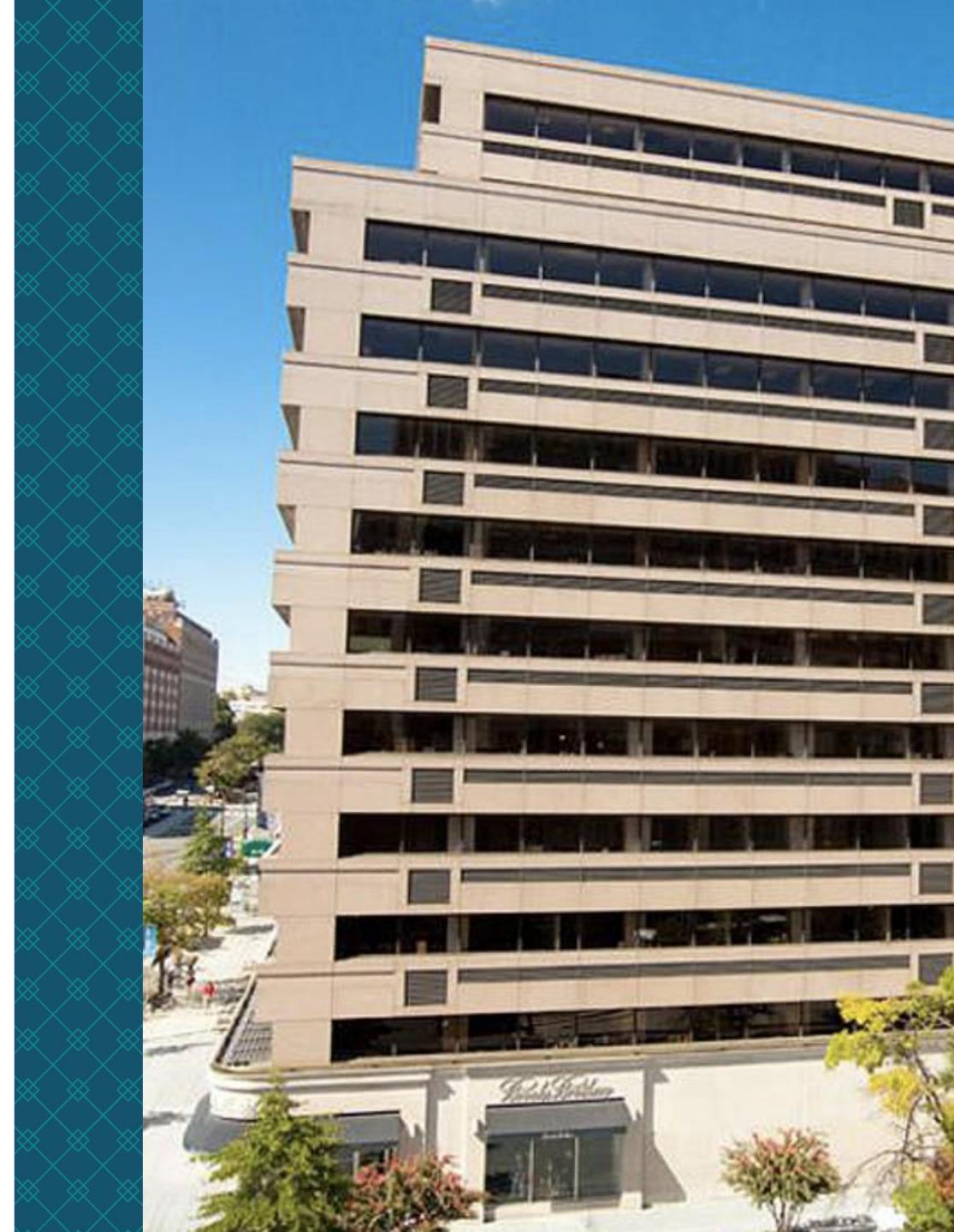
- [1] 5th Floor
- [1] 6th Floor
- [1] 9th Floor

6 Phone Booths

- [2] 2nd Floor
- [1] 5th Floor
- [3] 6th Floor

2 Expansive Lounge

- Located on 6th Floor
- Located on 2nd Floor



Center Photos



[Click Here To Take a
3D Virtual Tour](#)



Proposed Solution

Suite 900C

Layout Breakdowns

8 Workstations

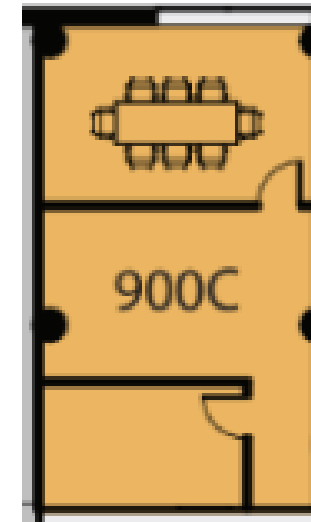
- 1 Private Office

1 Conference Room

- [1] 8-person

[-] Optional Furniture Add-ons

- [-] of Huddle Rooms
- [-] of Phone Booths
- [-] of Lounge Areas
- Soft Seating Area



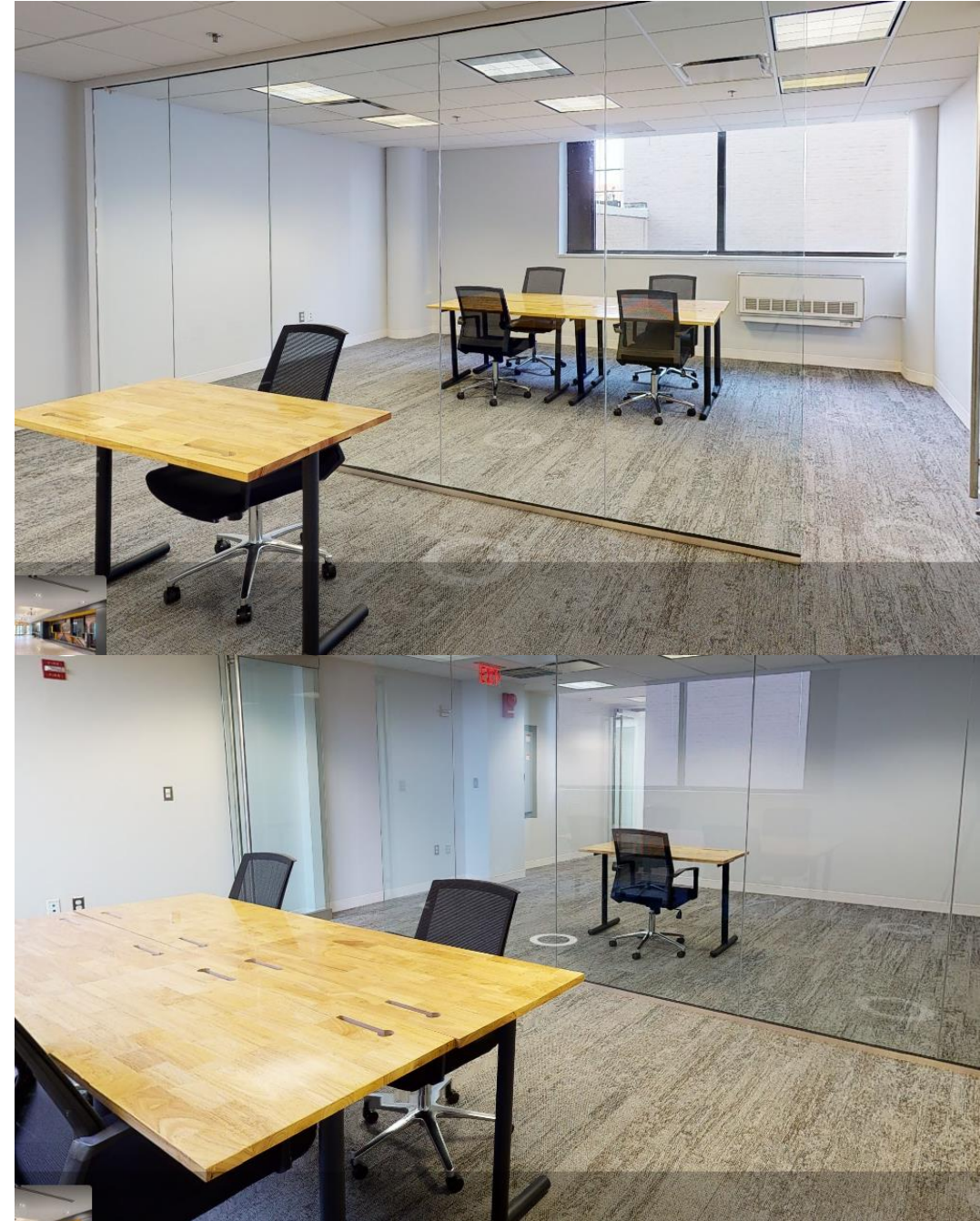
Photos

Suite 900C | [Washington DC](#)

Highlights

- Open team area, dedicated meeting room, 1 private office
- First floor, lobby access
- Private entrance directly into suite
- Excellent signage opportunity off lobby
- Access to Expansive Lounge

[Click Here To Take a
3D Virtual Tour](#)



All-Inclusive Pricing

Suite 900C | 800 SF

- Accommodates 8 workstations
- \$3,667/month – 12 Months Term
- On-site storage available for supplies & equipment.
- Starting from \$50/mo.
- Retainer – 1x Monthly Office Rental Fee
- One time Setup & Exit Fee - \$750



Expansive ClubSuite® Membership Includes:

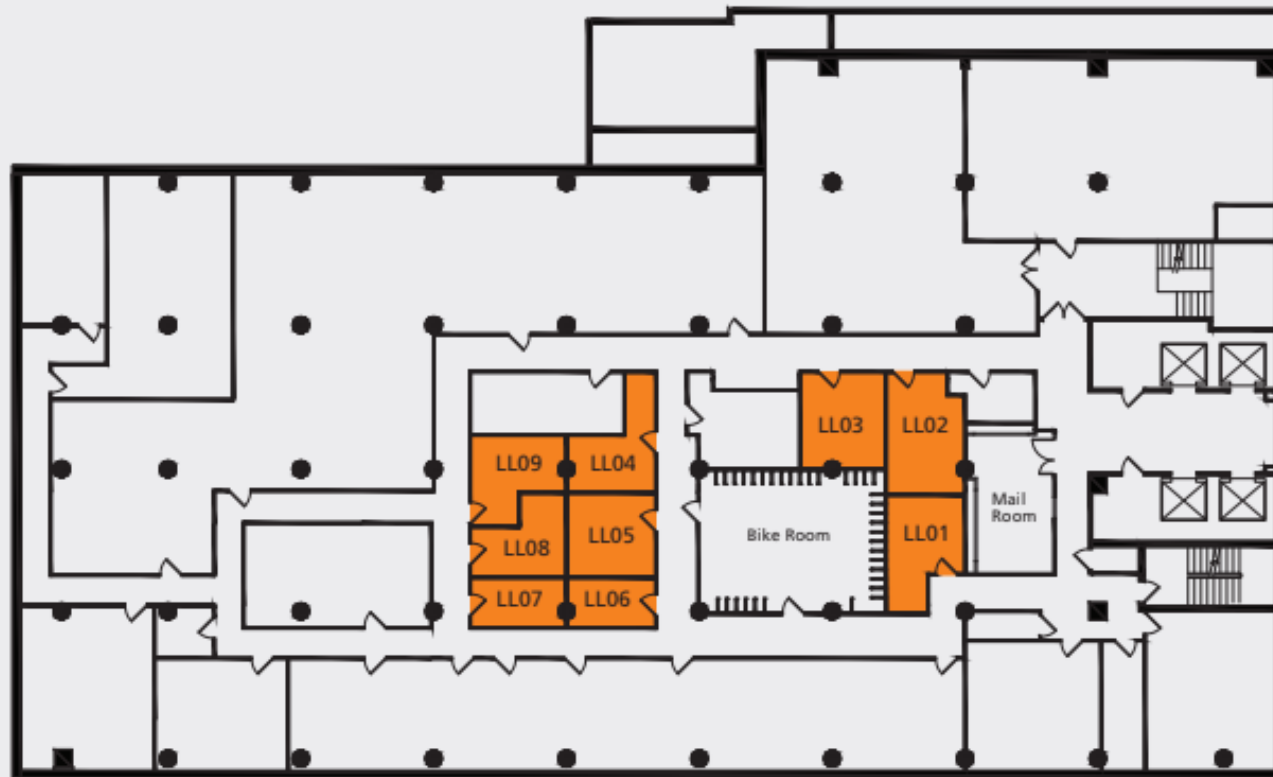
- Private entry with 24/7 secure building areas
- Fully furnished workspace
- WiFi
- Dedicated Meeting room with Smart TV
- Touchless Faucets & Restrooms
- Company logo on Suite Door, as well as member directory listing on Expansive App
- On-site Management
- Access to Expansive amenities, including:
 - Mothers Room
 - Bike Room/Rack
 - Community App
 - Meeting and event facilities
 - High speed printers/scanners
 - Mail & package receipt services
 - Storage facilities (location specific)
 - Community networking events



Storage Options

Starting at \$50 per month

LOWER LEVEL - STORAGE



SINGLE TIER



DOUBLE TIER



Go Beyond Workspace

EVENT VENUES Available Across the Expansive Network

Impress your team and clients!

- Networking Events
- Team Happy Hours
- Company Conference
- Recruiting Fair
- Team Retreats



Visit expansive.com/events
to See Location and Venue Details



Your Membership Includes Access to All Locations

33

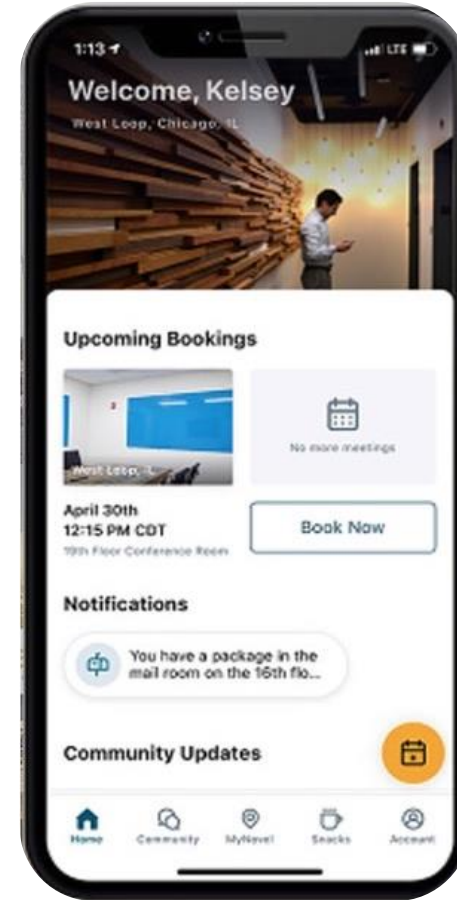
Cities

3.7M

SF

40

Locations



Seattle, WA



Cincinnati, OH



Denver, CO



Minneapolis, MN

What Happens Next

We invite you to proceed in two simple steps.

1 Choose your solution

Act now to avoid disappointment. We operate on a first-come, first-served basis.

2 Easy online sign up

Once you have chosen your preference option, we will send you a one page agreement which is just one click to sign.

Further questions? Please contact us if we haven't given you the right solution here. Talk to us. Other options are available.

Email: info@expansive.com or call **877.301.6217**

