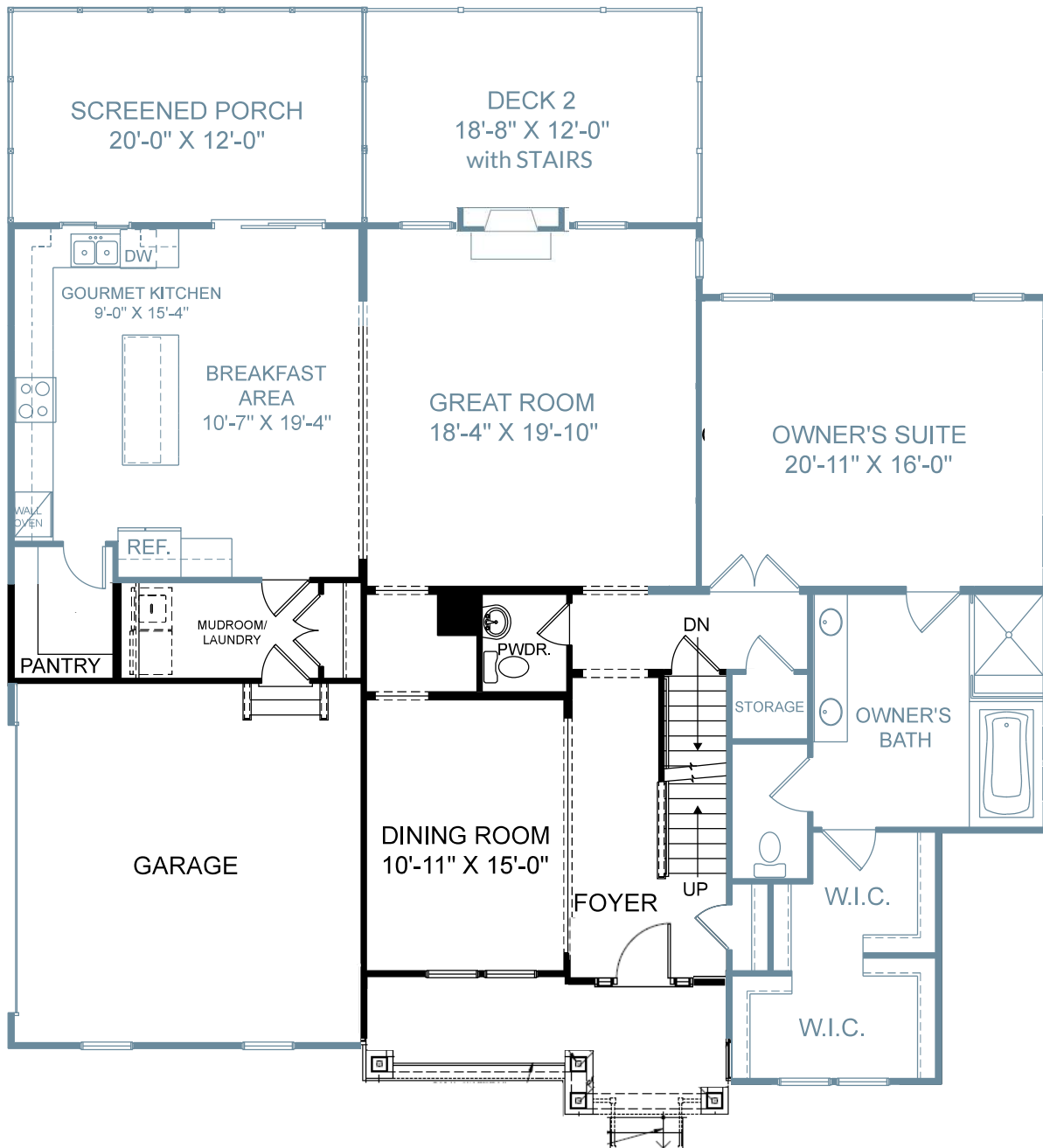


# K2C 19 "THE TRAVIS" LAYOUT

Approximate Main Level, Second Level, and Basement Finished Square Feet: 4,722



Email Leah Peeks at [PeeksLN@StanleyMartin.com](mailto:PeeksLN@StanleyMartin.com) for more information!

NOTE: These plans are Preliminary and still subject to County or Glenmore Architectural Review Board change.

Main Level

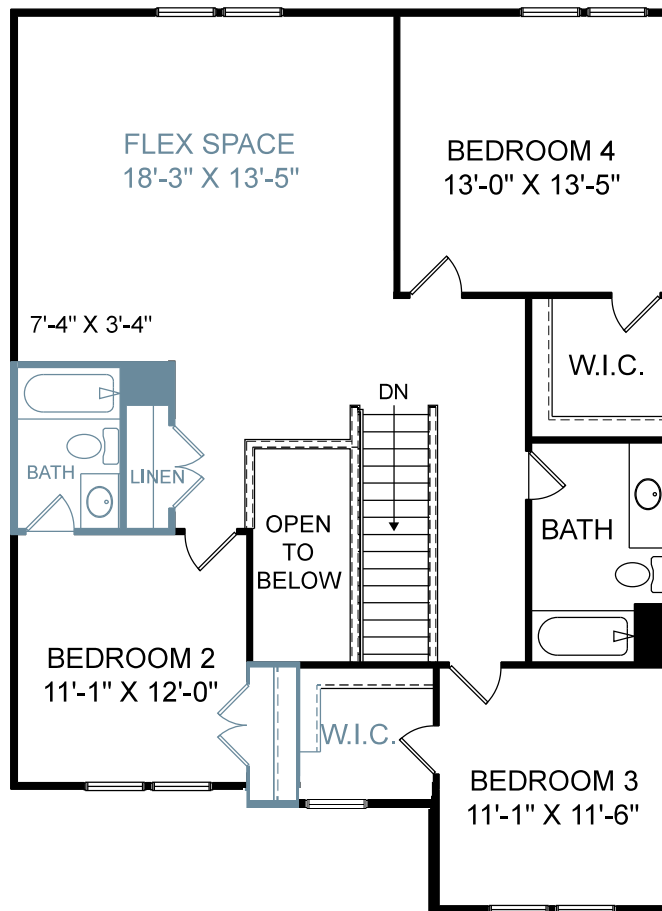
[www.StanleyMartin.com](http://www.StanleyMartin.com)

Renderings are artist's concept only and elevation illustrations may include optional features. It is recommended that the architectural blueprints be reviewed for clarification of features. Window sizes, window locations and room sizes vary per elevation and all dimensions are approximate. In our continued effort of design enhancement, actual product and specifications may vary in dimension or detail from these drawings and are subject to change without notice. Standard features and available options vary by community and some features may not be available on all homesites. Please consult our Sales Manager for more detailed specifications. ©2017 Stanley Martin Homes



# K2C 19 "THE TRAVIS" LAYOUT

Approximate Main Level, Second Level, and Basement Finished Square Feet: 4,722



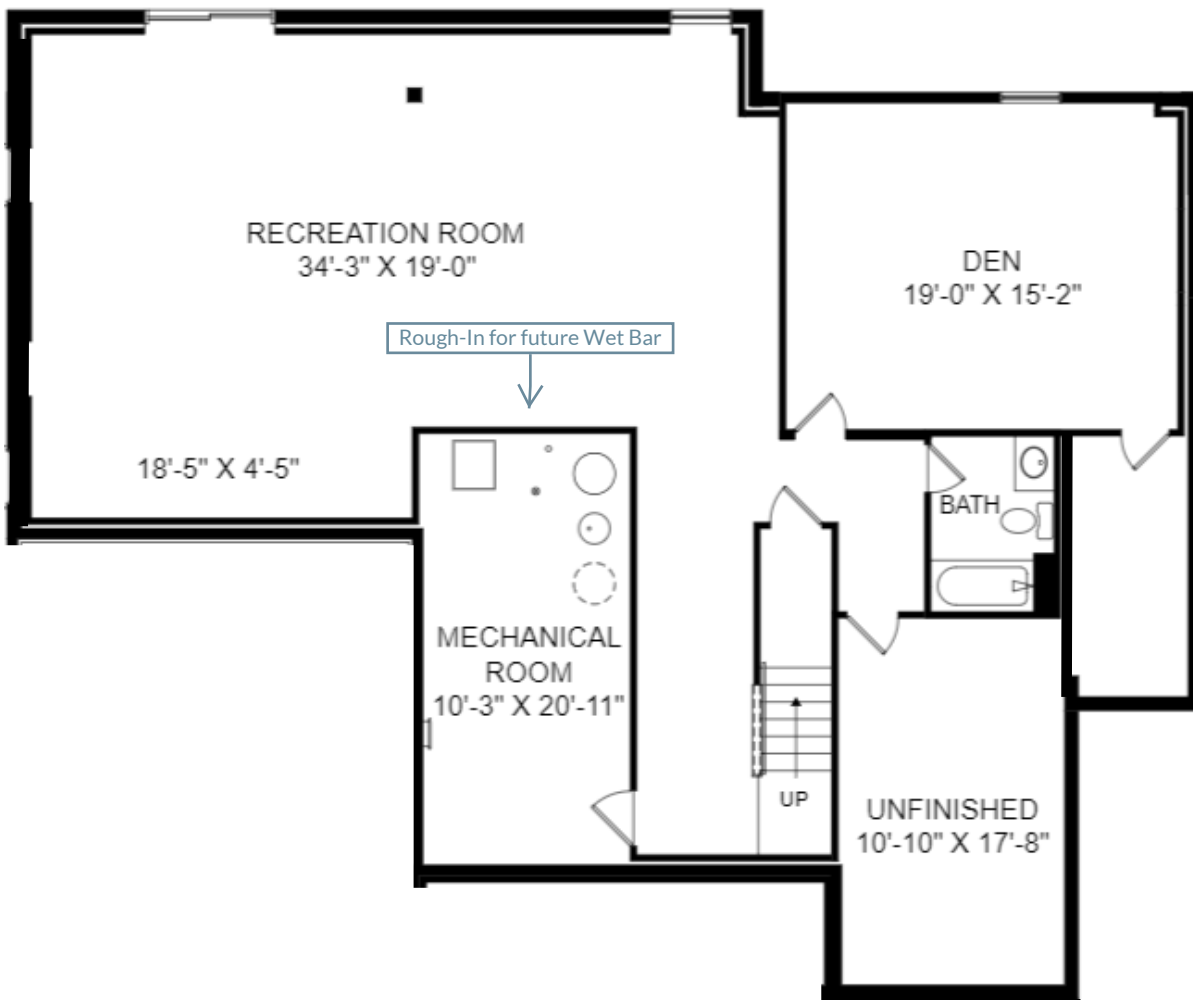
Email Leah Peeks at [PeeksLN@StanleyMartin.com](mailto:PeeksLN@StanleyMartin.com) for more information!

NOTE: These plans still subject to County or Glenmore Architectural Review Board change.



# K2C 19 "THE TRAVIS" LAYOUT

Approximate Main Level, Second Level, and Basement Finished Square Feet: 4,722



Email Leah Peeks at [PeeksLN@StanleyMartin.com](mailto:PeeksLN@StanleyMartin.com) for more information!

NOTE: These plans still subject to County or Glenmore Architectural Review Board change.

