

# SMart

## SELECTED HOMES

Designed with *you* in mind

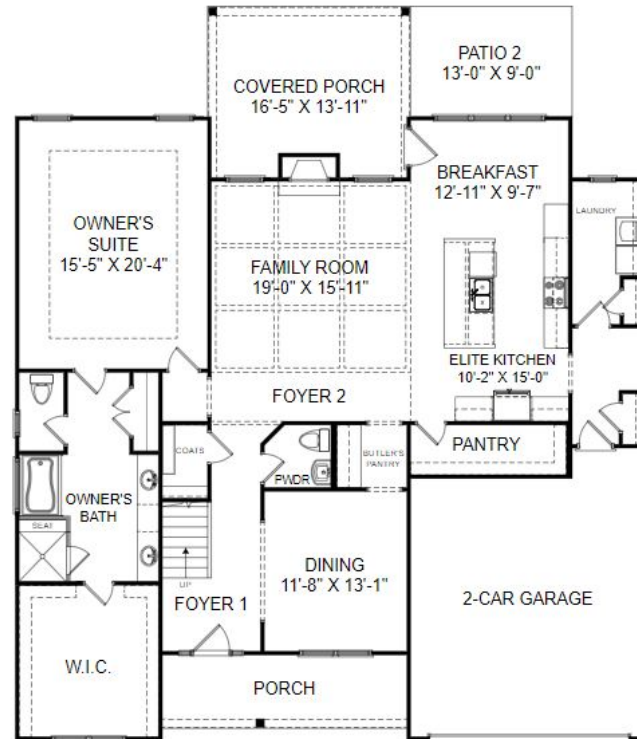


## THE BROWNING

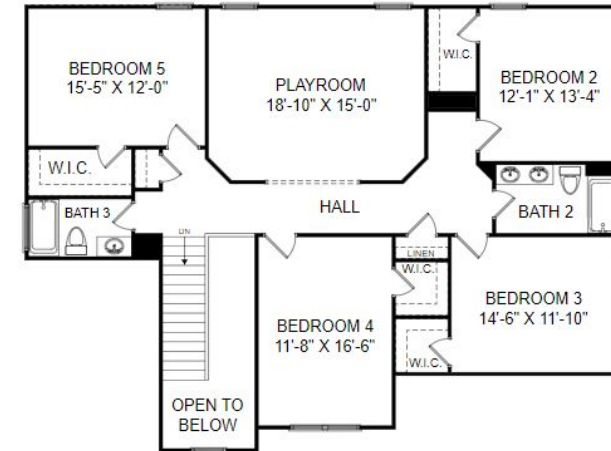
### Homesite 125

335 Carriage Hill Drive, Easley, SC

- 5 Bedrooms, 3.5 Baths
- 3,532 Square Feet
- Deluxe A Design Collection
- Aristokraft White Kitchen Cabinets
- Calacutta Ultra Quartz Countertops
- Pendant Lighting



Main Level Floor Plan



Upper Level Floor Plan

Prices, features and incentives are subject to change without notice. Photos used are for illustrative purposes only. Square footage is an approximation. Square footage is calculated to the outside of the framed walls or to the face of the brick on brick exteriors. It includes all conditioned spaces, except spaces under 5' in height. Site plan and home renderings are artist's concept only and elevation illustrations may include optional features. Actual product and specifications may vary in dimension or detail from these drawings and are subject to change without notice. It is recommended that the architectural blueprints be reviewed for clarification of features. Lot sizes, features and home sites are approximate and subject to change without notice. This brochure is for illustrative purposes only and is not part of a legal contract. Certain restrictions may apply. See a Neighborhood Sales Manager for details. ©Stanley Martin Homes, LLC | 03/2022 | A-9669

