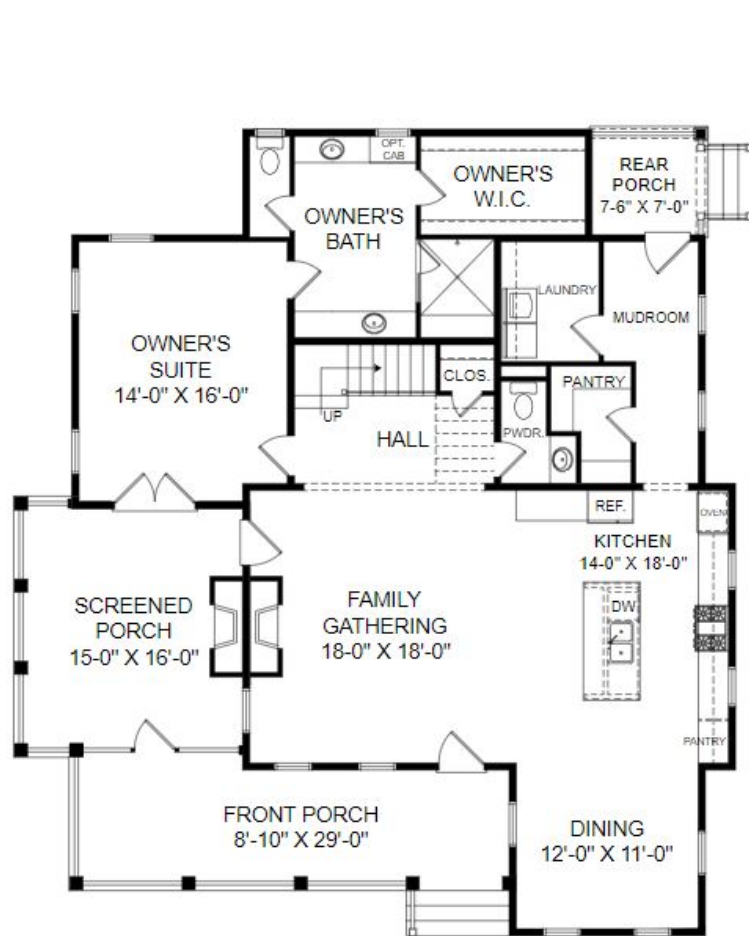
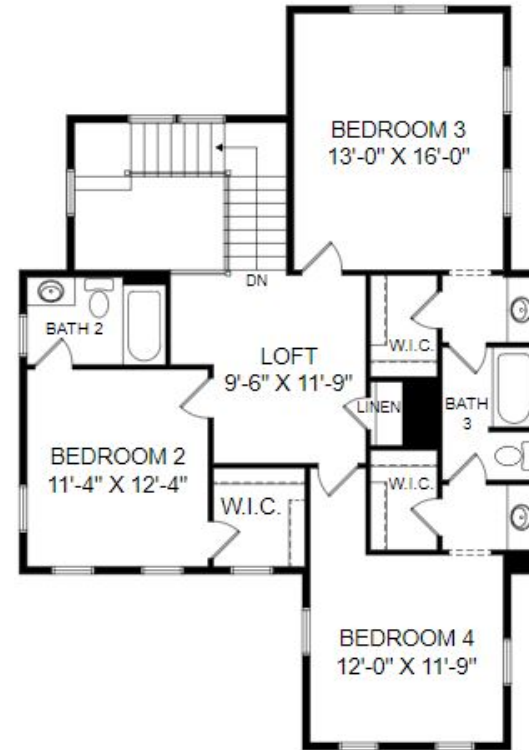


THE RIVERSIDE

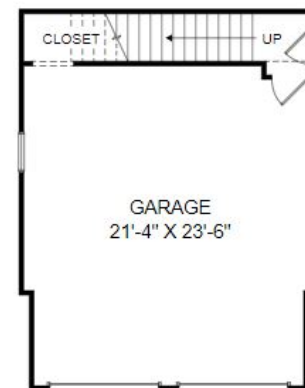
Home Site 2425 | 4 Bedrooms | 3.5 Bathrooms | 2-car Garage | 2,711 Square Feet | Elevation C



Main Level Floor Plan



Upper Level Floor Plan



Family Room Over Garage

1751 Bolden Drive, Mount Pleasant, SC 29466

Renderings are artist's concept only and elevation illustrations may include optional features. It is recommended that the architectural blueprints be reviewed for clarification of features. Window/door sizes, window/door locations and room sizes vary per elevation and all dimensions are approximate. Certain options may be linked together or may otherwise be required for a particular homesite. In our continued effort of design enhancement, actual product and specifications may vary in dimension or detail from these drawings and are subject to change without notice. Optional features may not be available in all communities or on all homesites. This brochure is for illustrative purposes only and is not part of a legal contract. ©Stanley Martin Homes, LLC | A-9681

