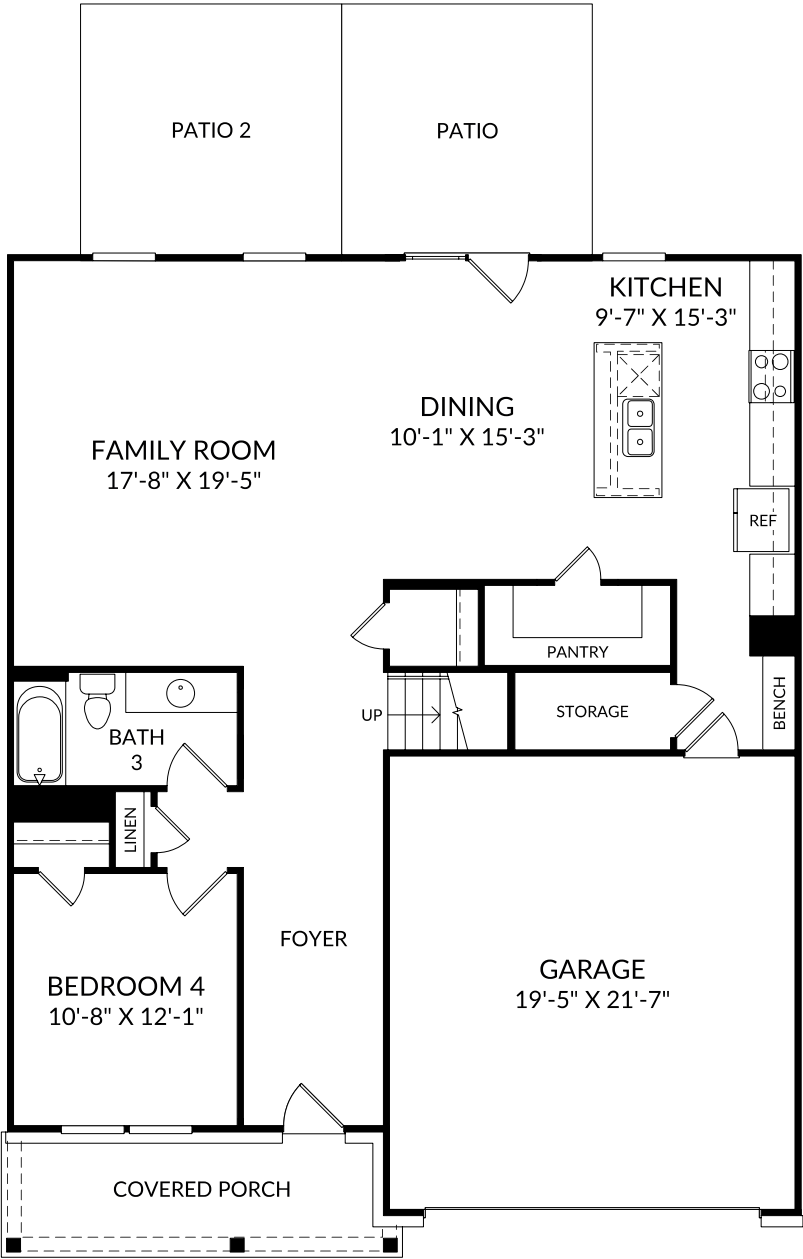


The Hollins

Main Level
4 Beds
3 Full Baths
2 Car Garage
2,455 Sq. Ft.



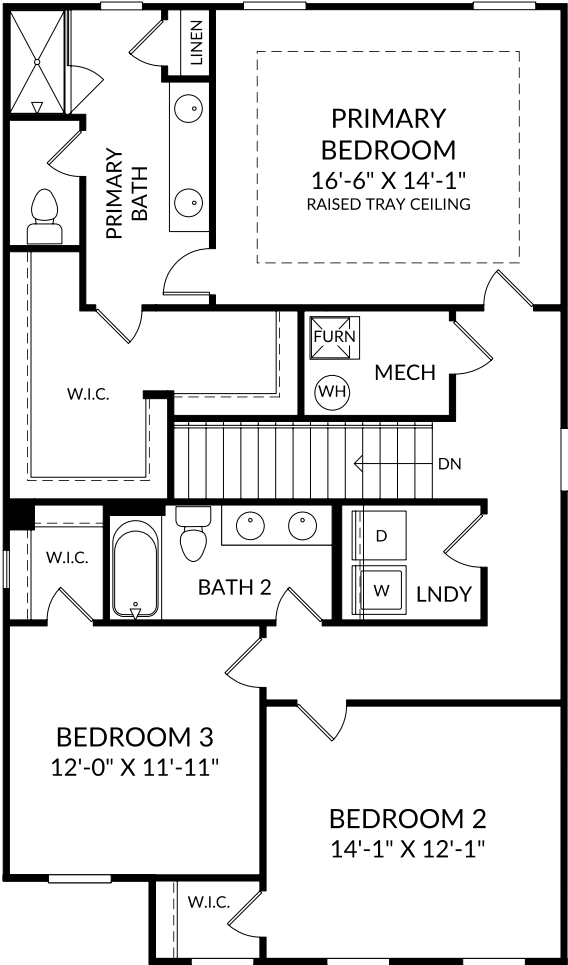
Selected Options:

- Bedroom 4 with Bath 3
- Bench with Cubbies
- Atrium Door
- Elevation F
- Patio 2

The floor plans shown are for general illustration purposes only. All dimensions are approximate. Actual product and specifications (including windows, doors and room layout) may vary in dimension or detail from the illustration shown, may vary with each different elevation available for a particular floor plan, and are subject to change without notice. Optional features shown may not be available in all communities or for all homesites. Certain optional features must be purchased together or must be purchased for a particular homesite. See the actual architectural plans for clarification of dimensions and optional features for each home, elevation and homesite. Revision: 10/4/2024

The Hollins

Upper Level
4 Beds
3 Full Baths
2 Car Garage
2,455 Sq. Ft.



Selected Options:

Raised Tray Ceiling at Primary Bedroom
2nd Sink at Bath 2

The floor plans shown are for general illustration purposes only. All dimensions are approximate. Actual product and specifications (including windows, doors and room layout) may vary in dimension or detail from the illustration shown, may vary with each different elevation available for a particular floor plan, and are subject to change without notice. Optional features shown may not be available in all communities or for all homesites. Certain optional features must be purchased together or must be purchased for a particular homesite. See the actual architectural plans for clarification of dimensions and optional features for each home, elevation and homesite. Revision: 10/4/2024