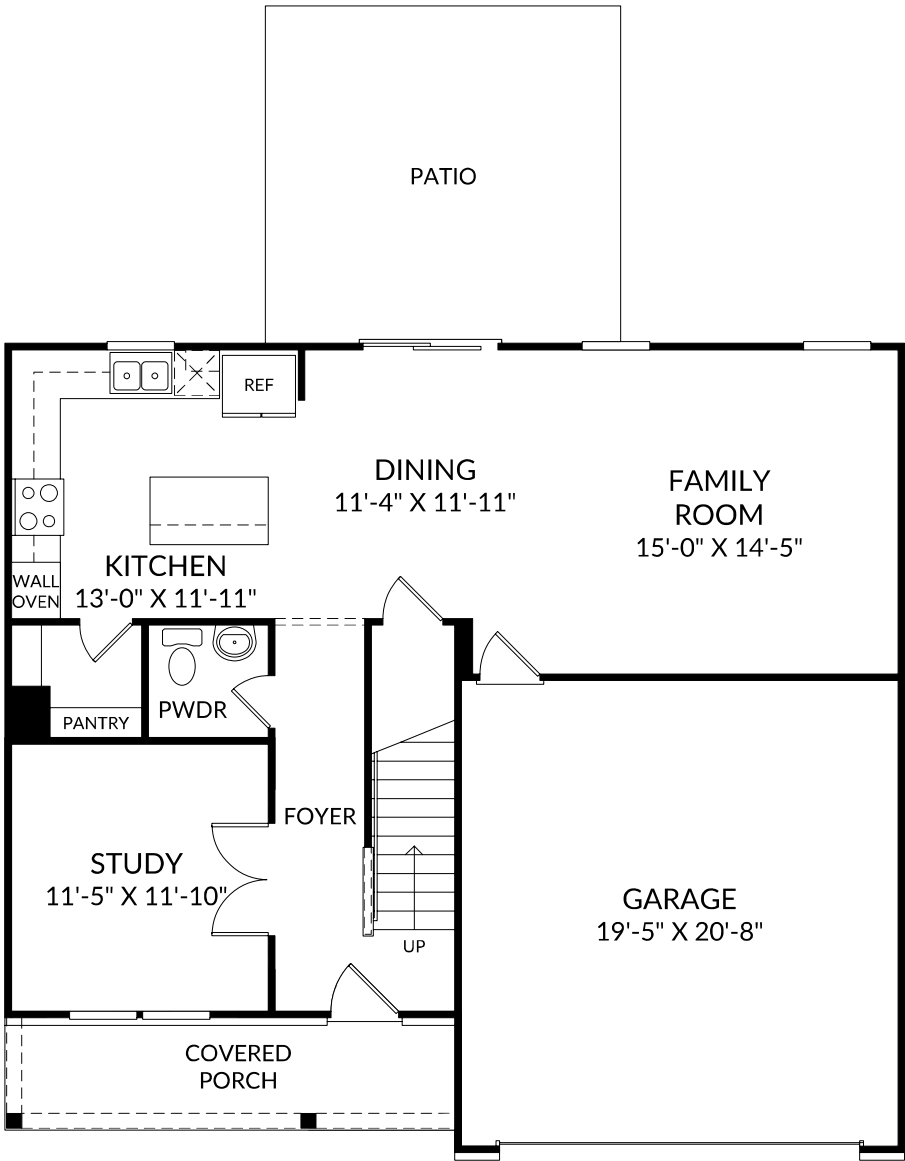


The Tremont

- Main Level
- 4 Beds
  - 2 Full Baths | 1 Half Bath
  - 2 Car Garage



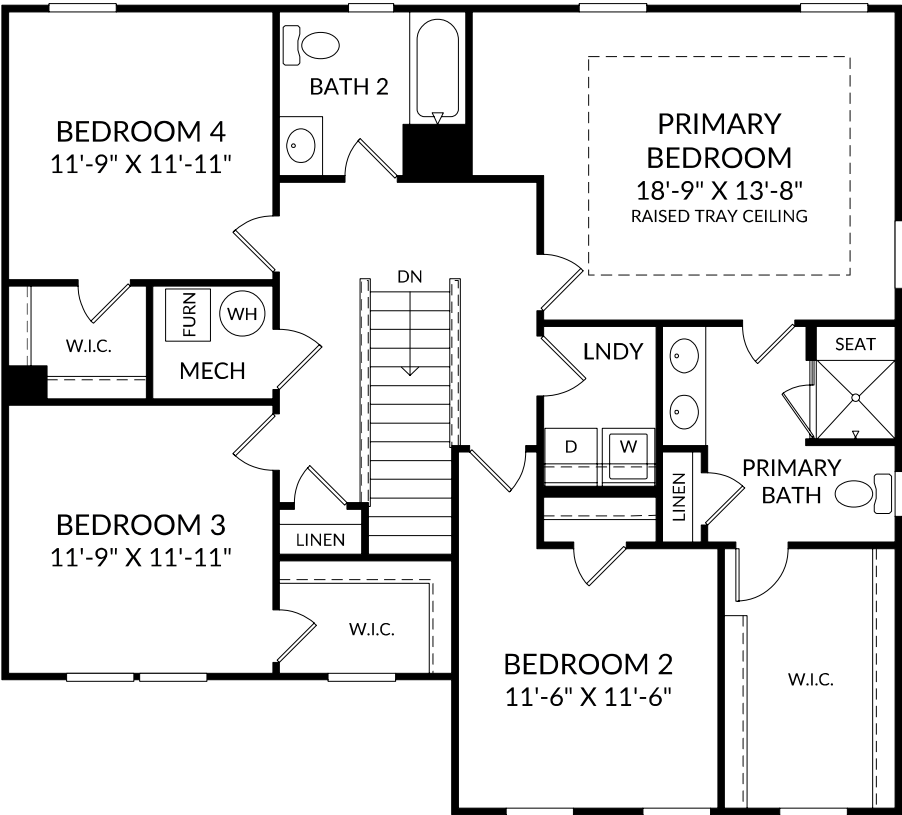
Selected Options:

- Study
- Elevation D
- Gourmet Kitchen
- Patio

The floor plans shown are for general illustration purposes only. All dimensions are approximate. Actual product and specifications (including windows, doors and room layout) may vary in dimension or detail from the illustration shown, may vary with each different elevation available for a particular floor plan, and are subject to change without notice. Optional features shown may not be available in all communities or for all homesites. Certain optional features must be purchased together or must be purchased for a particular homesite. See the actual architectural plans for clarification of dimensions and optional features for each home, elevation and homesite. Revision: 3/25/2025

The Tremont

- Upper Level
- 4 Beds
- 2 Full Baths | 1 Half Bath
- 2 Car Garage



Selected Options:

- Raised Tray Ceiling at Primary Bedroom
- Window at Primary Bedroom

The floor plans shown are for general illustration purposes only. All dimensions are approximate. Actual product and specifications (including windows, doors and room layout) may vary in dimension or detail from the illustration shown, may vary with each different elevation available for a particular floor plan, and are subject to change without notice. Optional features shown may not be available in all communities or for all homesites. Certain optional features must be purchased together or must be purchased for a particular homesite. See the actual architectural plans for clarification of dimensions and optional features for each home, elevation and homesite. Revision: 3/25/2025