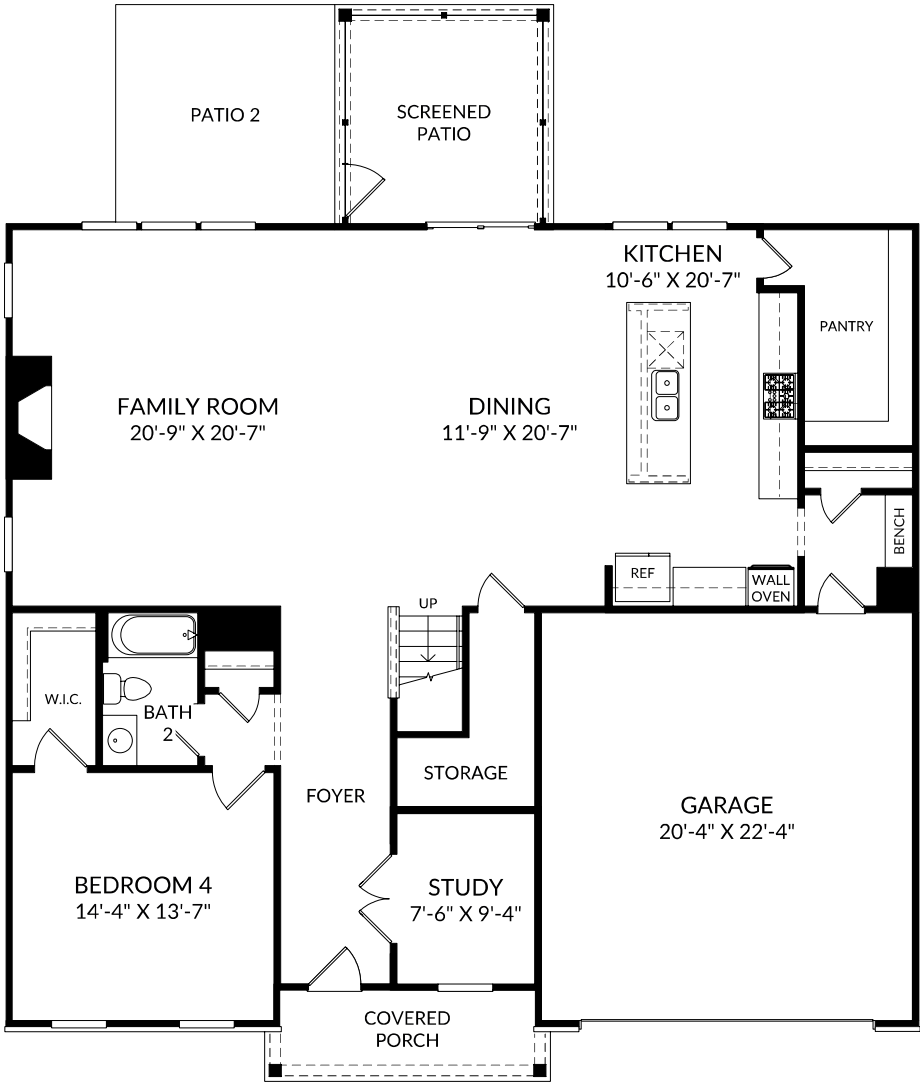


The Poplar

- Main Level
- 4 Beds
- 3 Full Baths
- 2 Car Garage



Selected Options:

- Elevation H
- Study
- Bench with Cubbies
- Windows at Family Room
- Fireplace
- Screened Patio
- Patio 2

The floor plans shown are for general illustration purposes only. All dimensions are approximate. Actual product and specifications (including windows, doors and room layout) may vary in dimension or detail from the illustration shown, may vary with each different elevation available for a particular floor plan, and are subject to change without notice. Optional features shown may not be available in all communities or for all homesites. Certain optional features must be purchased together or must be purchased for a particular homesite. See the actual architectural plans for clarification of dimensions and optional features for each home, elevation and homesite. Revision: 4/10/2025

## The Poplar

Upper Level

4 Beds

3 Full Baths

2 Car Garage



### Selected Options:

Window at Laundry

Windows at Primary Bedroom

2nd Sink at Bath 3

Linen at Bath 3

Primary Bath Shower with Seat