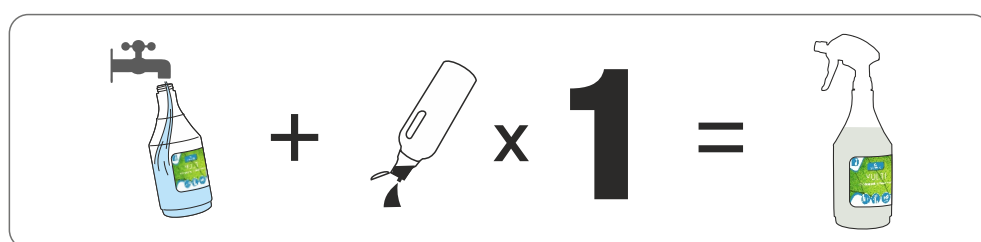


# MULTI

## Ecological multisurface cleaner

A multi purpose cleaner suitable for use on all washable hard surfaces including glass, chrome, marble and aluminium.

### DILUTION RATE (General Cleaning)



### METHOD OF USE



1 Fill an empty trigger bottle with clean water.



2 Add 1 shot (20ml) of GREEN'R Multi.



3 Spray diluted GREEN'r Multi onto the area to be cleaned and work into the surface with a cloth.



4 Wipe away with a clean cloth. Leave the surface to air dry.

### DOSAGE

APPLICATION	DILUTION
LIGHT CLEANING	9ml (1:66)
GENERAL CLEANING	20ml (1:30)
HEAVY CLEANING	30ml (1:20)
BUCKET FILL	40ml (1:125)

### PRODUCT INFO



Pack Size:	1L, 5L
Product Code:	460
Odour:	Characteristic
Colour:	Clear
pH (undiluted):	6-8
Shelf life:	2 years



For Health & Safety information, please scan the QR code provided.

### FEEL OUR PASSION

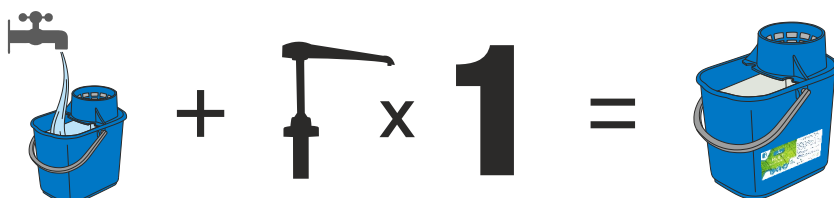
Christeyns Professional Hygiene UK Ltd | Clover House | Whaley Bridge | SK23 7DQ  
 T +44 (0) 1663 733 114 | W www.cloverchemicals.com

# MULTI

## Ecological multisurface cleaner

A multi purpose cleaner suitable for use on all washable hard surfaces including glass, chrome, marble and aluminium.

### DILUTION RATE (Heavy Cleaning)



### METHOD OF USE



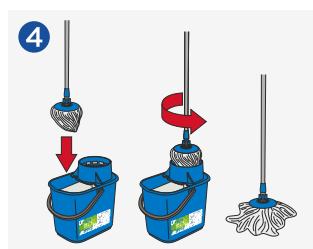
Place a wet floor sign in the area to be cleaned.



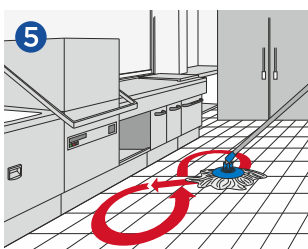
Fill an empty bucket with 5 litres of clean water.



Dispense 1 pump (30ml) of GREEN'R Multi into the bucket.



Immerse the clean mop head into the bucket of GREEN'R Multi solution and wring out the mop thoroughly.



Apply the mop to the floor and wipe in a figure of 8 motion, working the mop side to side.



Clean the dirty mop head in the bucket and repeat the previous steps until the floor is clean. Allow to air dry for a streak-free finish.

### DOSAGE

APPLICATION	DILUTION
LIGHT CLEANING	9ml (1:66)
GENERAL CLEANING	20ml (1:30)
HEAVY CLEANING	30ml (1:20)
BUCKET FILL	40ml (1:125)

### PRODUCT INFO



Pack Size:	1L, 5L
Product Code:	460
Odour:	Characteristic
Colour:	Clear
pH (undiluted):	6-8
Shelf life:	2 years



For Health & Safety information, please scan the QR code provided.

### FEEL OUR PASSION

Christeyns Professional Hygiene UK Ltd | Clover House | Whaley Bridge | SK23 7DQ  
 T +44 (0) 1663 733 114 | W [www.cloverchemicals.com](http://www.cloverchemicals.com)





INTERIOR  
CLEANING

  
**GREEN'R**

# MULTI

## CONCENTRATED ALL PURPOSE CLEANER



- ECOLOGICAL – ALL PURPOSE CLEANER
- CONCENTRATED – ECONOMICAL IN USE
- CLEANS ALL HARD SURFACES / FLOORS
- VEGAN APPROVED
- EU ECOLABEL: IE/020/003

### PRODUCT DESCRIPTION

Use on all water washable hard surfaces, including glass, chrome, marble, aluminium and polished floors. This is a concentrated product, apply sparingly and evenly. Proper dosage saves costs and minimises environmental impact.

- Reduced impact on aquatic life
- Reduced use of hazardous substances
- Not tested on animals
- Phosphate free
- Suitable for use in septic tanks
- Rapidly biodegradable
- Clear user instructions
- Reduced packaging waste

### DILUTION RATES

**Light Cleaning** - Dilute 9mls (1:66) of GREEN'R Multi in a 600ml trigger spray with cold water.

**General Cleaning** - Dilute 20mls (1:30) of GREEN'R Multi in a 600ml trigger spray with cold water.

**Heavy Dirt** - Dilute 30mls (1:20) of GREEN'R Multi in a 600ml trigger spray with cold water.

**Bucket Fill** - Dilute 40mls (1:125) of GREEN'R Multi in a 5 Litre bucket with cold water.

### INSTRUCTIONS FOR USE

**For the best ecological and economical usage.**

#### Hard Surface Cleaning:

Apply a solution of GREEN'R Multi onto hard surfaces using a trigger spray and wipe clean.

#### Floor Cleaning:

Apply a dilution of GREEN'R Multi evenly onto the floor using a clean mop and bucket. Work over the floor to remove the soiling. Use a bucket of clean water to rinse out the mop, sponge or pad. Rinse the floor with clean water if necessary.

### ADDITIONAL INFORMATION

Product code: 460  
pH Level: 6-8

## **STORAGE**

---

Use above 5°C. Store preferably above 0°C.

## **PACKAGING**

---

8 x 1 Litre

2 x 5 Litre

## **NON WARRANTY**

---

This information is based on our current knowledge and is intended to describe the product for the purposes of health, safety and environmental requirements only. It should not therefore be construed as guaranteeing any specific property of the product.