

Kit Kat 2 Finger White Chocolate Biscuit Bar Multipack 9 Pack



EAN

7613287872258

Target market(s)

GB, IE

Components

Ingredients

Sugar

Wheat Flour (contains Calcium, Iron, Thiamin and Niacin)

Dried Whole **Milk**

Cocoa Butter

Skimmed **Milk** Powder

Vegetable Fats (Palm, Shea, Mango Kernel, Sal)

Cocoa Mass

Emulsifier (Lecithins)

Natural Flavourings

Yeast

Raising Agent (Sodium Bicarbonate)

Butterfat (from **Milk**)

Whey Powder Product (from **Milk**)

Whey Powder (from **Milk**)

Nutrition

	Per 100g	Per bar	Reference Intake*	% RI*
Energy	2155kJ	445kJ	8400kJ	
	515kcal	106kcal	2000kcal	5%
Fat	26.7g	5.5g	70g	8%
of which: saturates	15.1g	3.1g	20g	16%
Carbohydrate	59.0g	12.2g	260g	5%
of which: sugars	46.3g	9.6g	90g	11%
Fibre	0.8g	0.2g	-	-
Protein	9.3g	1.9g	50g	4%
Salt	0.27g	0.06g	6g	1%

*Reference Intake of an average adult (8400kJ/ 2000kcal)

Contains 9 servings

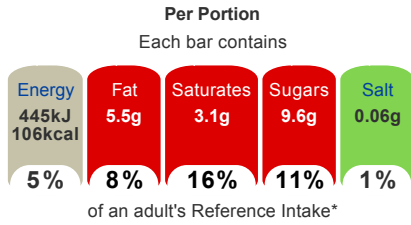
Portions should be adjusted for children of different ages

Calculated Nutrition

per 100g Per bar

Energy (kJ)	2155	445
Energy (kcal)	515	106
Fat (g)	26.7	5.5
of which saturates (g)	15.1	3.1
Carbohydrate (g)	59	12.2
of which sugars (g)	46.3	9.6
Fibre (g)	0.8	0.2
Protein (g)	9.3	1.9
Salt (g)	0.27	0.06

Front of Pack Nutrition



Energy per 100g: 2155kJ/515kcal

*Reference Intake of an average adult (8400kJ/ 2000kcal)

Nutrition Other Text

Reference Intake of an average adult (8400kJ/ 2000kcal)

Contains 9 servings

Portions should be adjusted for children of different ages

Reference Intake Statement

Reference Intake Statement - Reference Intake of an average adult (8400kJ/ 2000kcal)

Product Description

Brand

Kit Kat

Manufacturer Brand

Brand - Nestlé

Features

A delicious chocolate bar of 2 fingers of crispy wafer biscuit covered with smooth white chocolate

Multipack of 9 KitKat 2 Finger chocolate biscuits

With 106 Calories they're a great treat to enjoy during your break!

No artificial colours, flavours or preservatives

Suitable for vegetarians

Standardised Brand

Brand - KitKat

Regulated Product Name

Nine bars of two crispy wafer fingers covered with white chocolate (66%).

Marketing

Company Name

Nestlé UK & Ireland

Company Address

PO Box 203,
York,
YO91 1XY.

Nestlé Ireland,
3030 Lake Drive,
Citywest Business Campus,
Dublin 24.

Third Party Logos

- Rainforest Alliance
- Terracycle
- Tidyman

Product Marketing

Unwrap, break off a chocolate finger, snap it in two and savour the crispy wafer biscuit covered in deliciously smooth KITKAT white chocolate. KITKAT was first launched in 1935 as 'Rowntree's Chocolate Crisp' and didn't acquire its name until two years later in 1937. KITKAT supports improving the lives of cocoa farmers and quality of cocoa through the Nestle Cocoa Plan® and by working with the Rainforest Alliance. KITKAT 2 Finger makes a great addition to any lunch and a great treat at work or home. Why not make your next coffee break even better with a KITKAT 2 Finger? Annually we sell enough 2 Finger KITKAT to go around the world more than one and a half times! KITKAT 2 Finger has a range of 6 delicious chocolate flavours; Milk, Dark, Dark Mint, Orange, Honeycomb and NEW Kit Kat 2 Finger White. With its perfect chocolate to wafer ratio, KITKAT is the perfect companion for any break. You can enjoy KITKAT as the iconic KITKAT 4 Finger, KITKAT Chunky, KITKAT 2 Finger, or look out for us throughout the year for your seasonal favourites. So, whoever you are and however you break, Have a break, have a KITKAT ®

Brand Marketing

Why not mix up your break and try the all new KITKAT Chunky Salted Caramel Popcorn bar?

Other Information

Rainforest Alliance - People & Nature, Cocoa

® Reg. Trademark of Société des Produits Nestlé S.A.
Nutritional Compass ®

Further Description

Check out our YouTube Channel at www.youtube.com/user/KITKAT

Join us at facebook.com/KITKATuk

Visit www.KITKAT.co.uk

Share your chocolate biscuit break with #MyBreak

Good to remember: enjoying chocolate as part of a varied, balanced diet and a healthy lifestyle, is one of life's little pleasures.

Health & Lifestyle

Lifestyle

- Suitable for Vegetarians

Allergy Advice

Milk - Contains

Wheat - Contains

Additives

Artificial Colours - Free From

Artificial Flavours - Free From

Artificial Preservatives - Free From

Storage & Usage

Storage Type

Type

Ambient

Preparation and Usage

Know Your Servings
1 Bar = 1 Serving

Storage

Store cool and dry
For Before End see under fin seal

Brandbank Captured Pack Data

Pack Size

20.7g e

Numeric Size

Numeric Size - 20.7

Recycling Info

Pack - Don't Recycle

Pack Type

Type - Wrap

Recycling Scheme

- OPRL

Recycling Other Text

TerraCycle® - Not recycled by most councils. Find out how you can still recycle at www.terracycle.com/en-GB

Usage Count

Number of uses - Servings

9

Usage Other Text

Contains 9 servings

Units

Number of Units

Number of Units - 9

Customer Services

Manufacturers Address

PO Box 203,
York,
YO91 1XY.

Nestlé Ireland,
3030 Lake Drive,
Citywest Business Campus,
Dublin 24.

Return To

Contact us Free
www.nestle.co.uk
UK: 0800 604 604
PO Box 203,
York,
YO91 1XY.

ROI: 00800 6378 5385
Nestlé Ireland,
3030 Lake Drive,
Citywest Business Campus,
Dublin 24.

Telephone Helpline

UK: 0800 604 604
ROI: 00800 6378 5385

Web Address

www.nestle.co.uk

Extended Data

Languages On Pack

- English

Description Breakdown

Functional Name - Biscuit Bar
Variant - White Chocolate

