

ideapad C340 (14" & 15")

BRING YOUR IDEAS TO LIFE.

When inspiration strikes, turn to the powerful yet light Lenovo™ **IdeaPad™** C340. It has an all-day battery and you can use it as a laptop, tablet, and more. For extra privacy, it has a webcam shutter. And you can use a digital pen with it, too—giving you more ways to express yourself.

WHY YOU SHOULD BUY THE LENOVO IDEAPAD C340 (14" & 15")



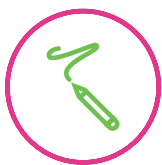
The freedom to get more done

With up to 12.5 hours of battery life, the **IdeaPad** C340 lets you work, play, and stay in the loop all day, from anywhere. Running low on juice? The C340 with rapid charging technology enables you fuel up to 80% battery capacity in just one hour.



Keep your privacy more private

In today's always-on world, online privacy truly matters. That's why the **IdeaPad** C340 has a convenient TrueBlock Privacy Shutter, enabling you to physically close your PC's webcam whenever you're not using it.



Let your creativity flow

Why type when you can write, draw, or sketch directly onto the **IdeaPad** C340's screen? With a **Lenovo Digital Pen¹**, you can capture moments of inspiration or take notes on the fly—wherever life takes you.



Extremely versatile, very functional

The **IdeaPad** C340 is designed for you to handle any situation, anywhere. Use it in Laptop mode for everyday computing, Tent mode for sharing things, Stand mode for binge-watching, or Tablet mode for more intuitive interaction.



READY FOR WHATEVER THE DAY BRINGS

Equipped with up to 10th Generation Intel® Core™ processors, the combination of **heavyweight performance** and **lightweight portability** will keep you in the flow, wherever you go.

Lenovo™

¹ Optional on selected models.



WWW.LENOVO.COM



ideapad C340 (14" & 15")

SPECIFICATIONS

Lenovo IdeaPad C340-14IML*, Lenovo IdeaPad C340-14IWL*,
Lenovo IdeaPad C340-15IML*, Lenovo IdeaPad C340-15IIL*, Lenovo IdeaPad C340-15IWL*

PERFORMANCE

Processor

C340-14IML, C340-14IWL

Up to 10th Generation Intel® Core™ i7-10710U Processor¹

Up to 8th Generation Intel® Core™ i7-8565U Processor

C340-15IML, C340-15IIL, C340-15IWL

Up to 10th Generation Intel® Core™ i7-10710U Processor¹

Up to 10th Generation Intel® Core™ i7-1065G7 Processor²

Up to 8th Generation Intel® Core™ i7-8565U Processor

Operating System

Windows 10 Home

Graphics

NVIDIA® GeForce® MX230

Intel® Integrated Graphics

Camera

Slim Camera 720p Fixed-Focus CMOS

Memory - DDR4 (On-board + SO-DIMM)

4 GB (0 GB + 4 GB) / 8 GB (4 GB + 4 GB) /

16 GB (0 GB + 16 GB)

Storage

C340-14IML, C340-14IWL

PCIe SSD : 128 GB / 256 GB / 512 GB / 1 TB

C340-15IML, C340-15IIL, C340-15IWL

SATA/PCIe SSD : 128 GB / 256 GB / 512 GB / 1 TB

HDD : 500 GB / 1 TB

SSD + HDD : 128 GB + 1 TB / 512 GB + 1 TB

Audio

2 x 2W Dolby Audio™ Speaker System

Battery³

C340-14IML, C340-14IWL

Up to 10.5 Hours, 45 WHr,

RapidCharge¹

C340-15IML, C340-15IIL, C340-15IWL

Up to 12.5 Hours, 52.5 WHr,

RapidCharge: 1 Hour - 80%

DESIGN

Display

C340-14IML, C340-14IWL

14" FHD (1920 x 1080) IPS, 250 nits

14" FHD (1920 x 1080) TN, 220 nits

14" HD (1366 x 768) TN, 220 nits

C340-15IML, C340-15IIL, C340-15IWL

15" FHD (1920 x 1080) IPS, 250 nits

15" HD (1366 x 768) TN, 220 nits

Hinge

360°

Dimensions (W x D x H)

C340-14IML, C340-14IWL

(mm) : 328 x 229 x 17.9

(inches): 12.91" x 9.01" x 0.7"

C340-15IML, C340-15IIL, C340-15IWL

(mm) : 364 x 250 x 20.5

(inches): 14.33" x 9.84" x 0.81"

Weight

C340-14IML, C340-14IWL

Starting at 3.64 lbs (1.65 kg)

C340-15IML, C340-15IIL, C340-15IWL

Starting at 4.41 lbs (2 kg)

Optional Features

Backlit Keyboard

Fingerprint Reader

Lenovo Digital Pen (Supported)

Glass Display⁴

Wow Features

Alexa

Cortana FFW

Dual Microphone Support

Multifinger Touchpad

Slim Camera 720p Fixed-Focus CMOS

with Privacy Shutter

65W Power Supply⁴

Colors

C340-14IML, C340-14IWL

Abyss Blue

Platinum Grey

Onyx Black

C340-15IML, C340-15IIL, C340-15IWL

Platinum Grey

Onyx Black

CONNECTIVITY

WLAN

2 x 2 WiFi 802.11 ac

1 x 1 WiFi 802.11 ac

Bluetooth®

Bluetooth® 4.2

Input/Output (I/O) Ports

2 x USB 3.1 Gen 1⁵

(One supports USB charging)

1 x USB 3.1 Gen 1⁵ (Type-C™)

4-in-1 Card Reader

HDMI™ 1.4b

Audio Jack

PRELOADED SOFTWARE

- Lenovo Utility⁶
- Lenovo Vantage⁷
- LinkedIn⁶
- McAfee LiveSafe™⁷
- Microsoft Office

¹ MX230 SKU.

² UMA SKU.

³ All battery life claims are approximate and based on test results using the MobileMark® 2014 ver 1.5 battery life benchmark test. Actual results will vary, and depend on numerous factors including product configuration and usage, software, operating conditions, wireless functionality, power management settings, screen brightness and other factors. The maximum capacity of the battery will naturally decrease with time and usage. See <https://bapccom.org/products/mobilemark-2014/> for additional details.

⁴ Only for C340-15IML, C340-15IIL, C340-15IWL.

⁵ The actual transfer speed of the USB 3.1 Gen 1 will vary and, depending on many factors, such as the processing capability of host and peripheral devices, file attributes and other factors related to system configuration and your operating environments, will be slower than a speed of 5 Gbit/s.

⁶ Worldwide (WW).

⁷ ROW only.



LENOVO SERVICES

Warranty Upgrades - On-site / In-Home Service

Maximizes PC uptime and productivity by providing convenient, fast repair services in your own home.

Accidental Damage Protection

Avoid the hassles of unexpected repair costs. Provides coverage for non-warranted damage incurred under normal operating conditions, such as minor spills, drops or damage to the integrated screen.

Warranty Extensions (1-to-3 Years Total Duration)

This fixed-term, fixed-cost service helps accurately budget for PC expenses, protect your valuable investment and potentially lower the cost of ownership over time.

* Example of Lenovo IdeaPad catalogue naming convention



Intel® platform codes

Apollo Lake: IAP, Broadwell: IBD, Braswell: IBR, Broadwell: IBW, Baytrail: IBY, Cannonlake: ICN, Haswell: IHH, Kabylake: IKB, Skylake H: ISH, Skylake: ISK, Skylake U: ISU, Skylake Y: ISY, Skylake Z: ISZ, Gemini Lake: IGM, Whiskey Lake: IWL, Comet Lake: CML-IML-ICL-IIL

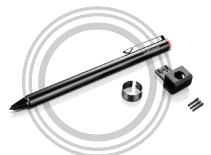
OPTIONS & ACCESSORIES



Lenovo 520 Wireless Mouse



Lenovo 15.6" Laptop Urban Backpack B810



Lenovo Active Pen



WWW.LENOVO.COM

Lenovo reserves the right to alter product offerings and specifications at any time, without notice. Lenovo makes every effort to ensure accuracy of all information but is not liable or responsible for any editorial, photographic or typographic errors. All images are for illustration purposes only. For full Lenovo product, service and warranty specifications visit www.lenovo.com. Lenovo makes no representations or warranties regarding third party products or services. **Trademarks:** The following are trademarks or registered trademarks of Lenovo: Lenovo, the Lenovo logo, IdeaPad, IdeaCentre, Yoga and Yoga home. Microsoft, Windows and Vista are registered trademarks of Microsoft Corporation. Ultrabook, Celeron, Celeron Inside, Core Inside, Intel, Intel Logo, Intel Atom, Intel Atom Inside, Intel Core, Intel Core Inside, Intel Inside Logo, Intel vPro, Itanium, Itanium Inside, Pentium, Pentium Inside, vPro Inside, Xeon, Xeon Phi, and Xeon Inside are trademarks of Intel Corporation in the U.S. and/or other countries. Other company, product and service names may be trademarks or service marks of others. Visit www.lenovo.com/lenovo/us/en/safecomp/ periodically for the latest information on safe and effective computing. ©2019 Lenovo. All rights reserved.



Lenovo™