



WiZ DIAL SWITCH



Here's what you need to install the WiZ smart dial switch: nothing! Mount the compact base in a convenient location, then attach the light switch that fits your existing switches. Easy to detach the magnetic plate for portable, wireless lighting control anywhere you need it. Use the dial for quick on/off and smooth dimming, or tap the panel to switch among your favourite lighting scenes. The smart dial light switch contains a USB-rechargeable lithium battery with so you'll never run out of juice. A discreet LED ring indicator lets you know when your lights are in use or when the battery needs recharging. Trust WiZ to fill your life with light – right out of the box!

PRODUCT HIGHLIGHTS

- Smooth dimming
- Wireless – no installation
- Rechargeable



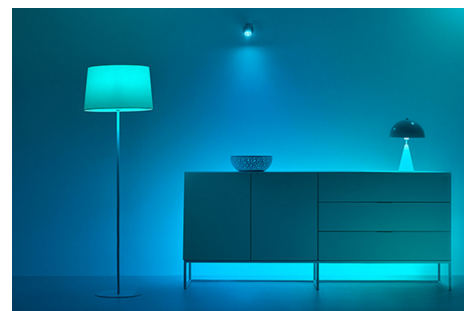
Wireless control of your WiZ lights

Enjoy quick and easy control of your WiZ lights. Turn lights on/off and adjust brightness with just one press. Connects directly to your WiZ lights and works even when the Wi-Fi is down.



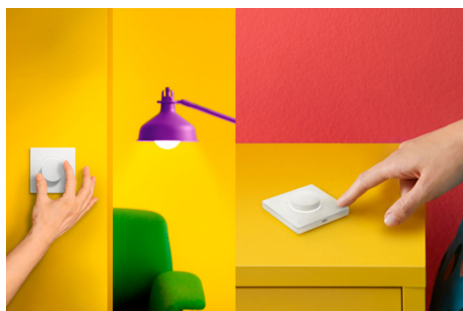
Wide control range of 15m/50ft

Control lights and devices within a range of 15 metres or 50 feet in a normal indoor environment with partitions and walls.



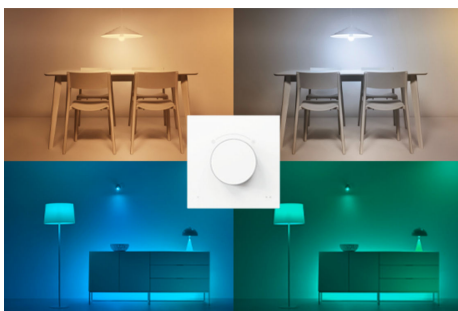
Easily control one or multiple lights in a room

This portable control accessory can link to one room and trigger all lights in that room. Whether there's one or fifty lights! Want to control another room instead? Simply change the accessory's linked room in the app.



The right ambience with just one tap

Use the dial for quick on/off and smooth dimming, or tap the panel to switch among your favourite lighting scenes.



Rechargeable USB dial switch with detachable magnetic plate

Mount the compact base in a convenient location and attach the light switch that fits with your existing switches. Easily detach the magnetic plate for portable, wireless lighting control anywhere you need it.



SPECIFICATIONS

DESIGN AND FINISHING

Colour: White
Material: Plastic

EXTRA FEATURE/ACCESSORY INCL.

Batteries included: Yes
Control distance: 15 m

POWER CONSUMPTION

Voltage: 5 V

PRODUCT DIMENSIONS AND WEIGHT

Net weight: 0.1 kg
Height: 2.49 cm
Length: 8.6 cm
Width: 8.6 cm

SERVICE

Warranty: 2 year(s)

TECHNICAL SPECIFICATIONS

Lifetime up to: 50,000 h
Battery type: Li-ion 402030
IP code: IP20
Class of protection: Class III

PACKAGING DIMENSIONS AND WEIGHT

EAN/UPC - product: 8720169077027
Net weight: 0.1 kg
Gross weight: 0.14 kg
Height: 13.7 cm
Length: 6.1 cm
Width: 10.6 cm
Material number (12NC):
929003792301



© 2023 Signify Holding. All rights reserved. The information provided herein is subject to change, without notice. Signify does not give any representation or warranty as to the accuracy or completeness of the information included herein and shall not be liable for any action in reliance thereon. The information presented in this document is not intended as any commercial offer and does not form part of any quotation or contract, unless otherwise agreed by Signify. All trademarks are owned by Signify Holding or their respective owners.