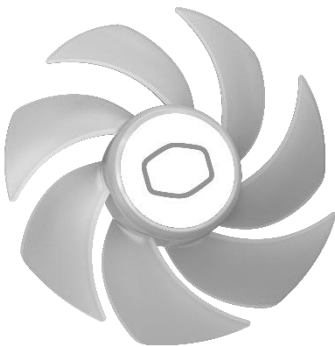




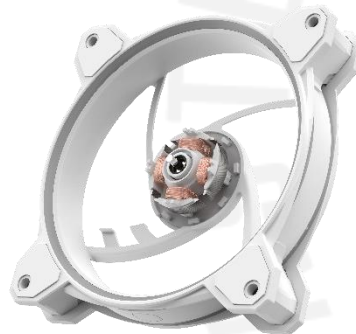
Hot on the heels of our popular MasterFan 120 Halo series, we at Cooler Master have redesigned our Dual Loop LED series fan as the MasterFan MF120 Halo² White Edition. The MF120 Halo² features 10% larger fan blades for improved air flow and cooling performance. The frame has been designed with a hybrid structure that maintains stability without sacrificing operational real estate. An upgraded driver IC is also included for increased cooling performance and minimal fan noise, while the elegant Dual Loop LED design is maintained via Addressable Gen. 2 RGB lighting that provides the ultimate customizable experience. Revolutionize your cooling setup with the MasterFan MF120 Halo², now available in 3-in-1 bundle pack.

# MASTERFAN MF120 HALO² 3in1 WHITE EDITION



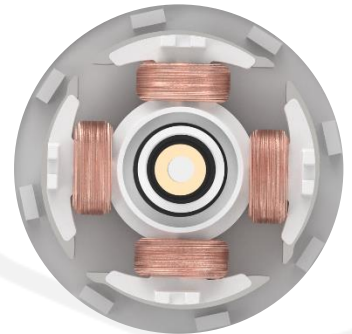
### Enlarged Fan Blades

Increased fan blades to deliver better air flow and cooling performance.



### Hybrid Frame Design

Hybrid frame structure maintains stability without sacrificing fan blade size and performance.



### Upgraded Driver IC

Upgraded driver IC boosts cooling performance while minimizing fan noise.



### LED Controller A1

Included ARGB controller enables fully customizable lighting.

**Enlarged Fan Blades - Increased fan blades to deliver better air flow and cooling performance**

**Hybrid Frame Design - Hybrid frame structure maintains stability without sacrificing fan blade size and performance**

**Upgraded Driver IC - Upgraded driver IC boosts cooling performance while minimizing fan noise**

**LED Controller A1 - Included ARGB controller enables fully customizable lighting.**

## SPECIFICATIONS

Product Name	MasterFan MF120 Halo <sup>2</sup> 3in1 White Edition	
Product Number	MFL-B2DW-213P2-R2	
Exterior Color	White	
Fan	Dimensions (L x W x H)	120 x 120 x 25mm (4.7 x 4.7 x 1")
	Profiles	Addressable Gen 2 RGB
	Speed (RPM)	0~2050 ± 5% RPM
	Airflow (CFM)	88.14 m <sup>3</sup> /h ( 51.88 CFM )
	Noise Level (dBA)	27 dB(A)
	Bearing	Rifle
	Pressure (mmH <sub>2</sub> O)	2.89 mmH <sub>2</sub> O
	MTTF	> 160,000 hours
	Power Connector	4-Pin PWM
	Rated Voltage (VDC)	12 VDC
	Rated Current (A)	0.14 A
	Safety Current	0.37 A
	Power Consumption	1.68 W
	RGB Connector	3-Pin ARGB
	RGB Rated Voltage	5 VDC
	RGB Rated Current	0.77 A
Weight	174 g (0.38 lbs)	
Warranty	2 years	

## PACKING INFORMATION

EAN code		Cont.	W/ Pallet	Carton/ Pallet	W/O Pallet
UPC code		20'		108	N/A
Net weight		40'		108	N/A
Gross weight		40 HQ		117	N/A
Package dimension (L x W X H)					
Carton dimension (L x W x H)					
Units/CTN					