

## USB 2.0 to IEEE 802.11N 150Mbps Mini Wireless Network Adapter - 1T1R

USB150WN1X1 / USB150WN1X1W



\*actual product may vary from photos

DE: Bedienungsanleitung - [de.startech.com](http://de.startech.com)

FR: Guide de l'utilisateur - [fr.startech.com](http://fr.startech.com)

ES: Guía del usuario - [es.startech.com](http://es.startech.com)

IT: Guida per l'uso - [it.startech.com](http://it.startech.com)

NL: Gebruiksaanwijzing - [nl.startech.com](http://nl.startech.com)

PT: Guia do usuário - [pt.startech.com](http://pt.startech.com)

For the most up-to-date information, please visit: [www.startech.com](http://www.startech.com)

## FCC Compliance Statement

This equipment has been tested and found to comply with the limits for a Class B digital device, pursuant to part 15 of the FCC Rules. These limits are designed to provide reasonable protection against harmful interference in a residential installation. This equipment generates, uses and can radiate radio frequency energy and, if not installed and used in accordance with the instructions, may cause harmful interference to radio communications. However, there is no guarantee that interference will not occur in a particular installation. If this equipment does cause harmful interference to radio or television reception, which can be determined by turning the equipment off and on, the user is encouraged to try to correct the interference by one or more of the following measures:

- Reorient or relocate the receiving antenna.
- Increase the separation between the equipment and receiver.
- Connect the equipment into an outlet on a circuit different from that to which the receiver is connected.
- Consult the dealer or an experienced radio/TV technician for help.

This Class B digital apparatus complies with Canadian ICES-003. Cet appareil numérique de la classe [B] est conforme à la norme NMB-003 du Canada. This device complies with Industry Canada licence-exempt RSS standard(s).

Operation is subject to the following two conditions:

(1) This device may not cause interference, and (2) This device must accept any interference, including interference that may cause undesired operation of the device.

Le présent appareil est conforme aux CNR d'Industrie Canada applicables aux appareils radio exempts de licence.

L'exploitation est autorisée aux deux conditions suivantes:

(1) l'appareil ne doit pas produire de brouillage, et (2) l'utilisateur de l'appareil doit accepter tout brouillage radioélectrique subi, même si le brouillage est susceptible d'en compromettre le fonctionnement.

IC Radiation Exposure Statement:

This equipment complies with IC RSS-102 radiation exposure limit set forth for an uncontrolled environment. This equipment should be installed and operated with minimum distance 20cm between the radiator and your body.

Déclaration d'exposition à la radiation:

Cet équipement respecte les limites d'exposition aux rayonnements IC définies pour un environnement non contrôlé. Cet équipement doit être installé et mis en marche à une distance minimale de 20 cm qui sépare l'élément rayonnant de votre corps.

L'émetteur ne doit ni être utilisé avec une autre antenne ou un autre émetteur ni se trouver à leur proximité.

FCC ID: NZ3WS-WN687N

IC: 11232A-USB150WN1X1



## **Use of Trademarks, Registered Trademarks, and other Protected Names and Symbols**

This manual may make reference to trademarks, registered trademarks, and other protected names and/or symbols of third-party companies not related in any way to StarTech.com. Where they occur these references are for illustrative purposes only and do not represent an endorsement of a product or service by StarTech.com, or an endorsement of the product(s) to which this manual applies by the third-party company in question. Regardless of any direct acknowledgement elsewhere in the body of this document, StarTech.com hereby acknowledges that all trademarks, registered trademarks, service marks, and other protected names and/or symbols contained in this manual and related documents are the property of their respective holders.

# Table of Contents

<b>Introduction</b> .....	<b>1</b>
Packaging Contents .....	1
System Requirements.....	1
<b>Installation</b> .....	<b>2</b>
Driver Installation.....	2
<b>How to Use</b> .....	<b>4</b>
Wireless LAN Utility .....	4
<b>Wi-Fi Protected Setup (WPS)</b> .....	<b>5</b>
Push Button Configuration.....	5
PIN Input Configuration.....	5
<b>Technical Support</b> .....	<b>6</b>
<b>Warranty Information</b> .....	<b>6</b>

# Introduction

The USB150WN1X1 / USB150WN1X1W USB 802.11N Mini Wireless Network Adapter allows almost any USB-enabled desktop, laptop or netbook computer system to connect to 'n', 'g' or 'b' wireless networks. Using a 1T1R (1 Transmitter/1 Receiver) design over the 2.4 GHz frequency in an extremely compact form factor, the USB adapter is capable of reaching up to 150 Mbps over an 802.11n network while taking up minimal space. Backward compatible with 802.11b/g networks (11/54 Mbps), this adapter is a versatile wireless networking solution. With support for standard and advanced security options such as WEP, WPA, as well as wireless Quality of Service (QoS) support, and quick and easy setup through WPS, this USB 2.0 adapter is backed by StarTech.com's 2-year warranty and free lifetime technical support, making for an excellent wireless upgrade or first-time setup option.

## Packaging Contents

- 1 x USB Wireless Network Adapter
- 1 x Driver CD
- 1 x Instruction Manual

## System Requirements

- USB enabled computer system with available USB port
- Microsoft® Windows® XP/Vista/7/8/Server 2003/Server 2008 R2/ Server 2012 (32/64bit), or Apple® Mac OS® 10.4/10.5/10.6, or Linux® kernel 2.6.x

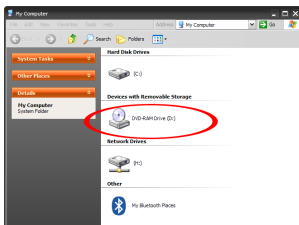
# Installation

## Driver Installation

**NOTE:** Install the drivers/software **before** plugging in the USB adapter.

### Windows XP/Server 2003

1. Upon starting Windows, **before** plugging in the wireless adapter, insert the included Driver CD into the computer's CD/DVD drive.
2. AutoPlay should automatically launch the Driver/Software installation splash screen. If not, open "My Computer" open the CD/DVD drive the disk is inserted into and double-click the file **Setup.exe**.



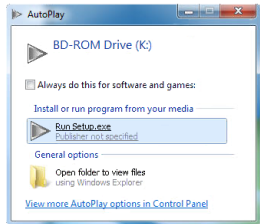
3. Select the option to install the USB 802.11n Adapter, followed by selecting the Windows installation. This will launch the Realtek Installation wizard.



4. Complete the wizard and this will install all necessary drivers and the Realtek Wireless LAN utility (optional to use).
5. Restart the computer when prompted by the installation program.
6. Once rebooted, connect the USB adapter to an available USB port and Windows will automatically install the drivers.

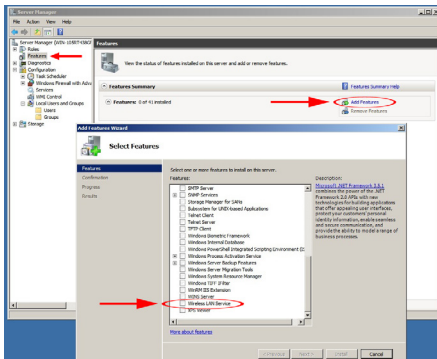
## Windows Vista/7/8/Server 2008 R2/Server 2012

1. Upon starting Windows, before plugging in the wireless adapter, insert the included Driver CD into the computer's CD/DVD drive.
2. AutoPlay should automatically launch the Driver/ Software installation splash screen or prompt you to run Setup.exe. If not, open "Computer" open the CD/DVD drive the disk is inserted into and double-click the file **Setup.exe**
3. Select the option to install the USB 802.11n Adapter, followed by selecting the Windows installation. This will launch the Realtek Installation wizard.
4. Complete the wizard and this will install all necessary drivers and the Realtek Wireless LAN utility (optional to use).
5. Restart the computer when prompted by the installation program.
6. Once rebooted, connect the USB adapter to an available USB port and Windows will automatically install the drivers.



## Windows Server 2008 R2 Note:

By default, the Microsoft "Wireless LAN Service" Feature is not installed. Before any wireless networking can be enabled, this feature must be installed through the Windows Server Manager window. Refer to Windows' documentation for details.

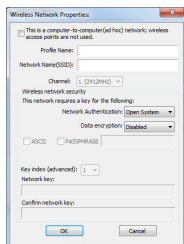
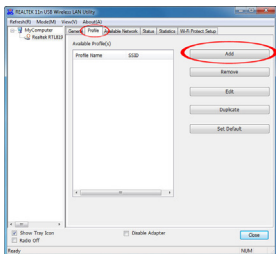


# How to Use

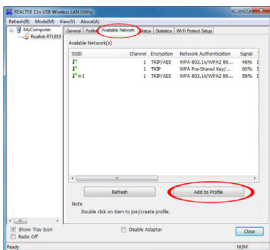
## Wireless LAN Utility

The optional Realtek Wireless LAN Utility can be used to replace or supplement the Windows wireless configuration utility. All features of the Windows utility are available, in addition to more detailed statistics and advanced features such as Wi-Fi Protected Setup (WPS).

To connect to a wireless network, a profile must first be created. This can be done from the "Profile" tab, or the "Available Network" tab. From the "Profile", simply click the "Add" button and fill in the required information such as SSID and security settings (contact your network administrator or wireless AP manufacturer for assistance).



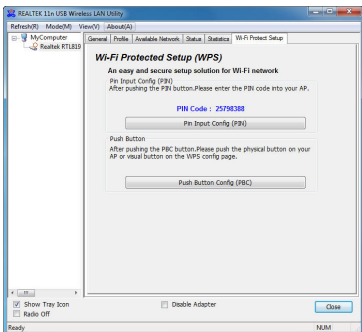
From the "Available Network" tab, select the wireless network you wish to connect to from the list of detected networks and then click the "Add to Profile" button. Fill in the required information then click the "OK" button. You may need to go to the "Profile" tab and set the newly created profile as "Default" before it will connect.





# Wi-Fi Protected Setup (WPS)

WPS is an easy way for anyone to automatically setup a secure wireless network on a Windows-based computer. A WPS compatible wireless access point (AP) is required. There are two methods of setting up WPS.



## Push Button Configuration

1. Once the adapter is connected and installed on the computer system, press the WPS button on the tip of the wireless adapter.
2. Press the WPS button on the wireless AP. The two devices should communicate with one another to automatically setup a secure wireless network connection.

## PIN Input Configuration

1. Launch the Realtek Wireless utility and under the "Wi-Fi Protect Setup" tab will be a "PIN Input" button.
2. Press the button to generate a PIN code.
3. Enter the configuration utility for the wireless AP (usually web browser interface) and enter the code into the WPS configuration section.

# Technical Support

StarTech.com's lifetime technical support is an integral part of our commitment to provide industry-leading solutions. If you ever need help with your product, visit [www.startech.com/support](http://www.startech.com/support) and access our comprehensive selection of online tools, documentation, and downloads.

For the latest drivers/software, please visit [www.startech.com/downloads](http://www.startech.com/downloads)

## Warranty Information

This product is backed by a two year warranty.

In addition, StarTech.com warrants its products against defects in materials and workmanship for the periods noted, following the initial date of purchase. During this period, the products may be returned for repair, or replacement with equivalent products at our discretion. The warranty covers parts and labor costs only. StarTech.com does not warrant its products from defects or damages arising from misuse, abuse, alteration, or normal wear and tear.

### Limitation of Liability

In no event shall the liability of StarTech.com Ltd. and StarTech.com USA LLP (or their officers, directors, employees or agents) for any damages (whether direct or indirect, special, punitive, incidental, consequential, or otherwise), loss of profits, loss of business, or any pecuniary loss, arising out of or related to the use of the product exceed the actual price paid for the product. Some states do not allow the exclusion or limitation of incidental or consequential damages. If such laws apply, the limitations or exclusions contained in this statement may not apply to you.

Hard-to-find made easy. At StarTech.com, that isn't a slogan. It's a promise.

StarTech.com is your one-stop source for every connectivity part you need. From the latest technology to legacy products — and all the parts that bridge the old and new — we can help you find the parts that connect your solutions.

We make it easy to locate the parts, and we quickly deliver them wherever they need to go. Just talk to one of our tech advisors or visit our website. You'll be connected to the products you need in no time.

Visit [www.startech.com](http://www.startech.com) for complete information on all StarTech.com products and to access exclusive resources and time-saving tools.

*StarTech.com is an ISO 9001 Registered manufacturer of connectivity and technology parts. StarTech.com was founded in 1985 and has operations in the United States, Canada, the United Kingdom and Taiwan servicing a worldwide market.*