

PHILIPS

Impress Outdoor wall light

Hue White and Colour Ambiance

Low-volt

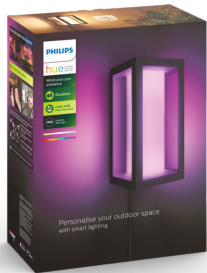
Matte black finish

240 x 120 mm

PSU sold separately



17459/30/P7



Easy smart lighting

Plugging into any outdoor outlet, this wall light makes it easy to instal colourful lighting anywhere in your outdoor space. It features a glass case and sleek black aluminium housing, with a long-lasting integrated LED.

Limitless possibilities

- Special light for special occasions
- Decorate for the holidays with light

Easy control and comfort

- Control it your way

Full control from a smart device with the Hue bridge

- Requires a Philips Hue bridge

Specially designed for your outdoor spaces

- Weather-proof (IP44)
- Unwind with warm to cool white light
- Easy to install and extend
- High-quality aluminium and tempered glass

Highlights

Special light for special occasions



Holiday cheer starts here – with smart light! Use your Philips Hue lights to transform your home into a festive experience: bright reds and greens for Christmas, subtle pastels for spring or even an eerie purple glow to create the most haunted house on the street at Halloween.

Decorate for the holidays with light



Holiday cheer starts here – with smart light! Use your Philips Hue lights to transform your home into a festive experience: bright reds and greens for Christmas, subtle pastels for spring or even an eerie purple glow to create the most haunted house on the street at Halloween.

Control it your way



Connect your Philips Hue lights with the Bridge and start discovering the endless possibilities. Control your lights from your smartphone or tablet via the Philips Hue app, or add the indoor switches to your system to change your lights. Set timers, notifications, alarms and more for the full Philips Hue experience. Philips Hue even works with Amazon Alexa, Apple Homekit and the Google Assistant to allow you to control your lights with your voice.

Requires a Philips Hue bridge



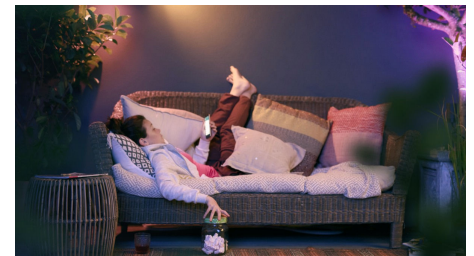
Connect your Philips Hue lights with the Bridge to control your lights from your smart phone or tablet via the Philips Hue app. Or control your Philips Hue lights with the Philips Hue dimmer indoor switch for on/off and dimming functionalities.

Weather-proof (IP44)



This Philips Hue outdoor fixture is specially designed for use in outdoor environments and has undergone rigorous tests to ensure its performance. The IP level is described by two figures: the first one refers to the protection level against dust, the second against water. This lamp is designed with IP44: it is protected against water splashed from any direction. This product is ideal for general outdoor use.

Warm to cool white light

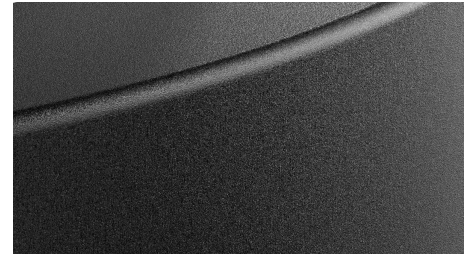


Extend your evenings with Philips Hue outdoor lighting. Set the right ambience on your patio, balcony or porch and relax. From the warm white light of a summer sun, to the ice cool daylight of winter: you can enjoy any shade of white light to fit your mood throughout the year.

Easy to install and extend

Brighten up dark paths, create highlights in your landscaping or create a unique ambience on the patio. You

can do it yourself, using Hue spots or bollards. The products are based on low voltage, safe to use and easy to install. No more complexity to get lighting outdoors: start to create and extend to suit your needs.

quality aluminium and glass

The products are made specifically for outdoor use. We use high-quality aluminium and tempered glass to ensure the best performance in outdoor conditions. As well as smart use of materials to optimise radio frequency.

Specifications

Design and finishing

- Colour: Black
- Material: Glass

Extra feature/accessory incl.

- Dimmable with the Hue app and switches: Yes

Light characteristics

- Colour rendering index (CRI): 80

Miscellaneous

- Especially designed for: Garden and Patio
- Type: Wall Lights

Product dimensions and weight

- Net weight: 1.990 kg
- Height: 24 cm
- Length: 14.1 cm
- Width: 12 cm

Service

- Warranty: 2 year(s)

Technical specifications

- Lumen output at 4000K: 1,180 lm
- Lifetime up to: 25,000 h
- Light colour: 2000–6500 Hue White Colour Ambiance
- Mains power: Range 220 V–240 V, 50–60 Hz
- LED: Yes
- Built-in LED: Yes
- Number of bulbs: 2
- Wattage bulb included: 8 W
- Maximum wattage replacement bulb: 8 W
- IP code: IP44, protection from splashed water
- Class of protection: III — safe extra low voltage
- Lumen output at 2700K: 710 lm

What's supported

- Compatible with Effects feature: Yes
- Philips Hue App: Android 10.0 and above, iOS 16 or later
- Defined support period: 5 years, except 3 years for Hue Bridge (see “End of Support Policy”)

Packaging dimensions and weight

- EAN/UPC – product: 8718696174333
- Net weight: 1.99 kg
- Gross weight: 2.35 kg
- Height: 335 mm
- Length: 140 mm
- Width: 260 mm



Issue date: 2024-11-21
Version: 0.688

© 2024 Signify Holding. All rights reserved. Signify does not give any representation or warranty as to the accuracy or completeness of the information included herein and shall not be liable for any action in reliance thereon. The information presented in this document is not intended as any commercial offer and does not form part of any quotation or contract, unless otherwise agreed by Signify. Philips and the Philips Shield Emblem are registered trademarks of Koninklijke Philips N.V.

www.lighting.philips.com