

# PHILIPS

Vynce Wall Light  
1.5W

Outdoor luminaires

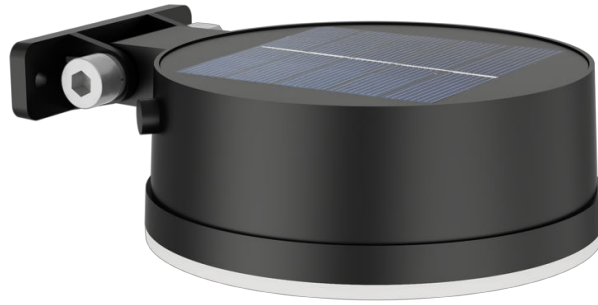
2700K

Black

Sensor; Solar; Water Resistant



8720169265622



## Enjoy a beautiful garden with light, in a sustainable way

Philips Vynce wall light is a reliable solar light that lasts for a longer time, reduces energy consumption and supports sustainability.

### Easy installation

- No wiring required

### Sustainable light solutions

- Solar energy

### Advanced LED light

- High-quality LED light

### Premium quality

- High quality material

### Designed for outdoors

- IP44 – weatherproof

### High-quality light

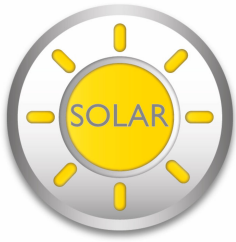
- Warm white light 2,700 K

# Highlights

## No wiring required

This light is powered entirely by solar energy. No wiring is needed, making these lights easy to position and reposition anywhere in your garden or other outdoor area.

## Solar energy



Philips Solar lights are designed to make the most of the energy they receive from the sun, for light that lasts longer. With no electricity consumption at all, they help you save money on your electricity bills and do your bit for the environment.

## High-quality LED light

These LED lights use a unique technology developed by Philips. They turn on instantly and produce optimal light output that brings out the vivid colours in your garden.

## High quality material

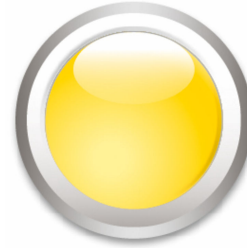
This Philips outdoor lamp is made of high-quality materials with superior finishing. This ensures a solid and long-lasting product which is resistant to corrosion and stains in all weather conditions

## IP44 – weatherproof



This Philips outdoor light is especially designed for humid outdoor environments and has been tested rigorously to ensure water resistance. Its IP44 rating means that it has been certified to offer ingress protection against dust and splashing water – perfect for general outdoor use.

## Warm white light 2,700 K



Did you know that different shades of white light are identified by different colour temperatures, measured in Kelvin (K)? Lower colour temperatures produce a warm, cosy white light, while higher colour temperatures produce a cool, more energising white light. This luminaire produces warm, relaxing light at 2,700 K.

# Specifications

## Design and finishing

- Colour: Black
- Material: Plastic

## Environmental

- Disposal of the product: At the end of (economic) life, dispose of the product in accordance with local rules. Do not dispose of the product with regular household waste. The correct disposal of your product will help to prevent potential negative consequences for the environment and human health.

## Extra feature/accessory incl.

- 5 year warranty on the LED module: Yes
- Adjustable spot head: No
- Anti-rust anti-dust: Yes
- Bi-directional light beams: No
- Day-and-night sensor: Yes
- Fully weatherproof: Yes
- LED integrated: Yes
- Motion sensor: No
- Solar Energy: Yes
- Warm White Light: Yes
- Centrepiece: No

**Garden area**

- Garden area: Garden and Patio

**Light characteristics**

- Colour rendering index (CRI): 80

**Miscellaneous**

- Especially designed for: Garden and Patio
- Style: Contemporary
- Type: Wall Lights
- EyeComfort: No
- Extra Features: Solar, Water Resistant, Dusk to dawn

**Product dimensions and weight**

- Net weight: 0.272 kg
- Height: 4.6 cm
- Length: 14.1 cm
- Width: 11.2 cm

**Service**

- Warranty: 2 year(s)

**Technical specifications**

- Lifetime up to: 15,000 h
- Total lumen output fixture: 200
- Light colour: 2700
- Mains power: 3.3 V
- Fixture dimmable: No
- Maximum wattage replacement bulb: 1.5 W
- IP code: IP44
- Class of protection: Class III
- Light source replaceable: No

**Packaging dimensions and weight**

- EAN/UPC – product: 8720169265622
- Net weight: 0.27 kg
- Gross weight: 0.31 kg
- Height: 14 cm
- Length: 5.4 cm
- Width: 11.7 cm
- Material number (12NC): 929004066101



Issue date: 2024-07-25  
Version: 0.269

© 2024 Signify Holding. All rights reserved. Signify does not give any representation or warranty as to the accuracy or completeness of the information included herein and shall not be liable for any action in reliance thereon. The information presented in this document is not intended as any commercial offer and does not form part of any quotation or contract, unless otherwise agreed by Signify. Philips and the Philips Shield Emblem are registered trademarks of Koninklijke Philips N.V.

[www.lighting.philips.com](http://www.lighting.philips.com)