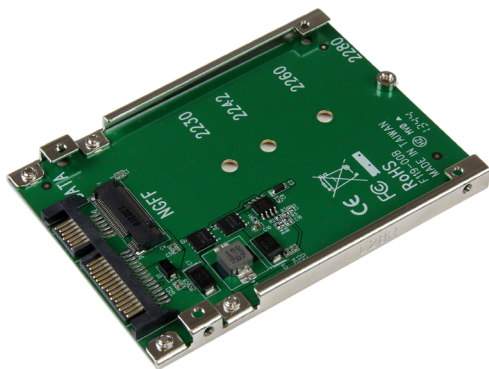


## M.2 NGFF SSD to 2.5in SATA SSD Converter

SAT32M225



\*actual product may vary from photos

DE: Bedienungsanleitung - [de.startech.com](http://de.startech.com)

FR: Guide de l'utilisateur - [fr.startech.com](http://fr.startech.com)

ES: Guía del usuario - [es.startech.com](http://es.startech.com)

IT: Guida per l'uso - [it.startech.com](http://it.startech.com)

NL: Gebruiksaanwijzing - [nl.startech.com](http://nl.startech.com)

PT: Guia do usuário - [pt.startech.com](http://pt.startech.com)

For the most up-to-date information, please visit: [www.startech.com](http://www.startech.com)

## FCC Compliance Statement

This equipment has been tested and found to comply with the limits for a Class B digital device, pursuant to part 15 of the FCC Rules. These limits are designed to provide reasonable protection against harmful interference in a residential installation. This equipment generates, uses and can radiate radio frequency energy and, if not installed and used in accordance with the instructions, may cause harmful interference to radio communications. However, there is no guarantee that interference will not occur in a particular installation. If this equipment does cause harmful interference to radio or television reception, which can be determined by turning the equipment off and on, the user is encouraged to try to correct the interference by one or more of the following measures:

- Reorient or relocate the receiving antenna.
- Increase the separation between the equipment and receiver.
- Connect the equipment into an outlet on a circuit different from that to which the receiver is connected.
- Consult the dealer or an experienced radio/TV technician for help.

## Use of Trademarks, Registered Trademarks, and other Protected Names and Symbols

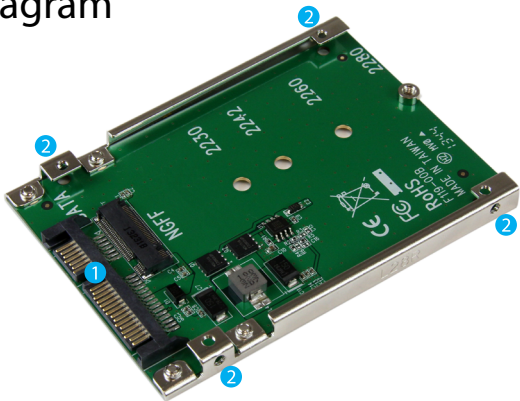
This manual may make reference to trademarks, registered trademarks, and other protected names and/or symbols of third-party companies not related in any way to StarTech.com. Where they occur these references are for illustrative purposes only and do not represent an endorsement of a product or service by StarTech.com, or an endorsement of the product(s) to which this manual applies by the third-party company in question. Regardless of any direct acknowledgement elsewhere in the body of this document, StarTech.com hereby acknowledges that all trademarks, registered trademarks, service marks, and other protected names and/or symbols contained in this manual and related documents are the property of their respective holders.

# Table of Contents

<b>Product Diagram .....</b>	<b>1</b>
Front View .....	1
Rear View.....	1
<b>Introduction .....</b>	<b>2</b>
Packaging Contents .....	2
System Requirements.....	2
<b>M.2 NGFF SSD Installation .....</b>	<b>2</b>
<b>Hard Drive Initialization .....</b>	<b>5</b>
<b>Technical Support .....</b>	<b>7</b>
<b>Warranty Information.....</b>	<b>7</b>

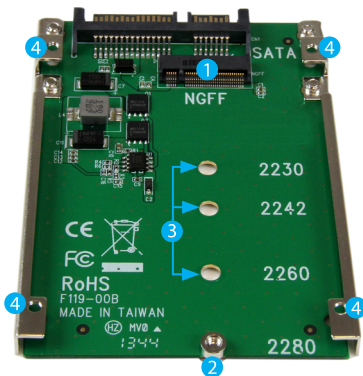
# Product Diagram

## Front View



1. SATA DATA & Power Combo (7+15 pin)
2. Side mounting holes

## Rear View



1. M.2 (NGFF) SSD Connector
2. Drive installation bracket
3. Drive length adjustment holes
4. Top mounting holes

# Introduction

## Packaging Contents

- 1 x M.2 NGFF SSD to 2.5in SATA SSD Converter
- 1 x Mounting screw kit
- 1 x Installation manual

## System Requirements

- M.2 NGFF Drive
- SATA Host Device

## M.2 NGFF SSD Installation

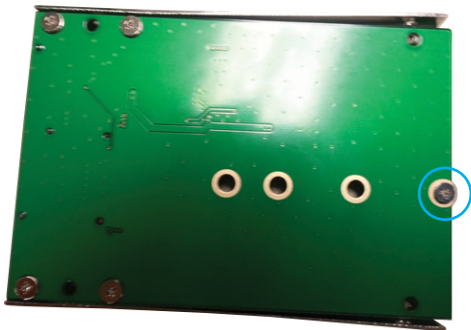
**WARNING!** SSD Drives and storage adapters require careful handling. If you are not careful with your SSD Drive, lost data may result. Always handle your drive with caution. Be sure that you are properly grounded by wearing an anti-static strap when handling computer components or discharge yourself of any static electricity build-up by touching a large grounded metal surface (such as the computer case) for several seconds.

1. Determine if the drive installation bracket requires relocating by assessing your drive length. The board is labeled with the respective drive types for length but if your drive type is unknown, place your SSD next to the M.2 (NGFF) SSD connector, note which drive installation hole matches the height of your SSD. If the bracket is already installed in the correct position please proceed to step 4.



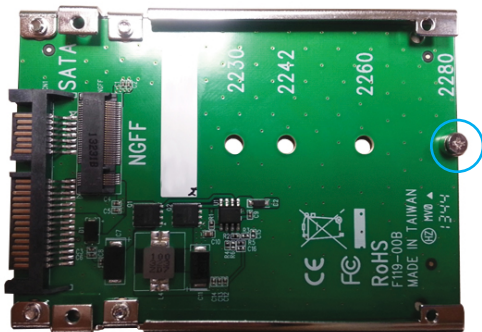
2. **(Only required if the drive installation bracket requires relocating)** Remove the screw holding the bracket in place on the reverse side using a Phillips head screw driver (Not included).

**Note:** There are screws located on either side of the bracket, ensure the reverse screw is the one removed, see photo below.



3. **(Only required if the drive installation bracket requires relocating)** Reseat the drive installation bracket in the drive installation hole that matches your SSD. Replace the removed screw on the reverse side by driving it into place using a phillips head screw driver.

4. Using a Phillips head screw driver (not included). Remove the screw located in the front of the hard drive installation bracket.
- Note:** There are screws located on either side of the bracket, ensure the front screw is the one removed, see photo below.



5. Slide the M.2 connector on the SSD into the M.2 receptacle connector on the SAT32M225.
- Note:** The connector on your M.2 SSD is keyed so the drive will only fit one way.



6. Press the drive down toward the drive mounting bracket, and drive the removed screw through the mounting hole on your SSD drive and into the drive mounting bracket using a Phillips head screw driver.



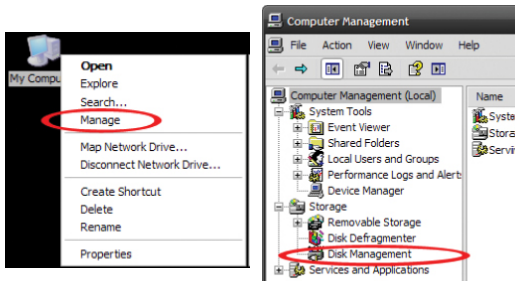
7. The SSD has now been installed, and is ready to be implemented in your 2.5" SATA drive application.

Refer to the manual for your SATA host device for installation instructions. The top or side mounting holes and included screw kit may or may not be required to assist in your installation.

## Hard Drive Initialization

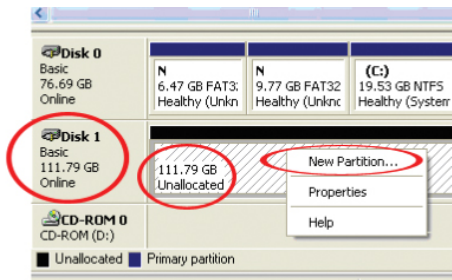
If the M.2 SSD is new or otherwise blank, it may need to be initialized and formatted before use. Follow the steps below in a Windows interface to initialize the drive.

1. From the main Windows desktop, right-click on "My Computer" ("Computer" in Vista/ 7 / 8), then select Manage. In the new Computer Management window, select Disk Management from the left window panel.





2. A dialog window should automatically appear, asking you to initialize the drive. Depending on the version of Windows, it will give you the option of either creating an “MBR” or “GPT” disk. GPT (GUID partition) is not compatible with some older operating systems, while MBR is supported by newer and older operating systems.
3. Once initialized, locate the Disk that says it is “Unallocated” (check the listed hard drive capacity to confirm it’s the correct hard drive) and then right-click in the section that says “Unallocated” and select “New Partition”.



4. Follow the on screen prompts to initialize the drive in the format of your choice.

# Technical Support

StarTech.com's lifetime technical support is an integral part of our commitment to provide industry-leading solutions. If you ever need help with your product, visit [www.startech.com/support](http://www.startech.com/support) and access our comprehensive selection of online tools, documentation, and downloads.

For the latest drivers/software, please visit [www.startech.com/downloads](http://www.startech.com/downloads)

## Warranty Information

This product is backed by a two year warranty.

In addition, StarTech.com warrants its products against defects in materials and workmanship for the periods noted, following the initial date of purchase. During this period, the products may be returned for repair, or replacement with equivalent products at our discretion. The warranty covers parts and labor costs only. StarTech.com does not warrant its products from defects or damages arising from misuse, abuse, alteration, or normal wear and tear.

### Limitation of Liability

In no event shall the liability of StarTech.com Ltd. and StarTech.com USA LLP (or their officers, directors, employees or agents) for any damages (whether direct or indirect, special, punitive, incidental, consequential, or otherwise), loss of profits, loss of business, or any pecuniary loss, arising out of or related to the use of the product exceed the actual price paid for the product. Some states do not allow the exclusion or limitation of incidental or consequential damages. If such laws apply, the limitations or exclusions contained in this statement may not apply to you.

Hard-to-find made easy. At StarTech.com, that isn't a slogan. It's a promise.

StarTech.com is your one-stop source for every connectivity part you need. From the latest technology to legacy products — and all the parts that bridge the old and new — we can help you find the parts that connect your solutions.

We make it easy to locate the parts, and we quickly deliver them wherever they need to go. Just talk to one of our tech advisors or visit our website. You'll be connected to the products you need in no time.

Visit [www.startech.com](http://www.startech.com) for complete information on all StarTech.com products and to access exclusive resources and time-saving tools.

*StarTech.com is an ISO 9001 Registered manufacturer of connectivity and technology parts. StarTech.com was founded in 1985 and has operations in the United States, Canada, the United Kingdom and Taiwan servicing a worldwide market.*