

PRECISE SILENT POWER



Introducing the X Silent Edge Platinum, the industry's first PSU to achieve 850W. The Edge features totally silent and dustless performance, innovative heat pipe technology, advanced heat dissipation, 80 Plus Platinum efficiency, an active bridge rectifier, and a digital monitor powered by Cooler Master's MasterCTRL software. With these features, the Edge provides precise and silent power.

The X Silent Edge Platinum also includes ATX 3.1 support, a durable 12V-2x6 cable, reliable, industrial-grade Infineon IC chips, fully modular cabling, high-quality Japanese capacitors, and a 15-year warranty. The X Silent Edge Platinum is the next frontier of silent, reliable, powerful performance.

X Silent Edge Platinum 850

Dustless silence: A fanless design provides total silence and a dust-free environment.

Innovative heat pipe technology: Implements our in-house designed superconductive composite heat pipe technology.

Advanced heat dissipation and thermal performance: A patented aluminum thermal mold efficiently dissipates heat.

80 Plus Platinum efficiency certification: This unit is certified to achieve more than 92% efficiency at typical loads.

Active bridge rectifier: Bridge diodes have been replaced with an active bridge rectifier to improve performance.

ATX 3.1 support & a durable 12V-2x6 cable: Includes ATX 3.1 support and a 90-degree 12+4pin (12V-2x6) PCIe 5.1 cable featuring lower temperatures, enhanced durability, and improved safety.

Digital monitor: Cooler Master's MasterCTRL software allows users to monitor temperature, current load, and overall performance.

Long-lasting reliability: Built with Infineon industrial-grade IC chips for high quality performance and long-lasting reliability.

Fully modular cabling: Efficiently reduces clutter, increases airflow, and improves overall efficiency and thermal performance.

High-quality Japanese capacitors: Large, high-quality Japanese capacitors feature reduced ripple noise and enhanced reliability.

15-year warranty: This unit comes with a standard limited manufacturing warranty of 15 years from the date of purchase.

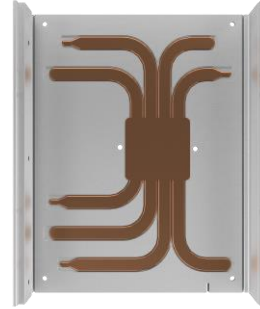


FEATURE HIGHLIGHTS



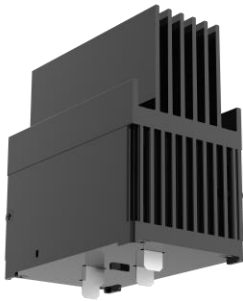
Dust-free silence

A fanless design provides total silence and a dust-free environment.



Innovative heat pipe technology

Implements our in-house designed superconductive composite heat pipe technology.



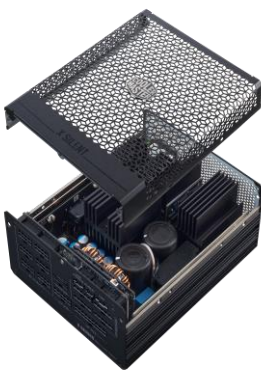
Advanced heat dissipation and thermal performance

A patented aluminum thermal mold efficiently dissipates heat.



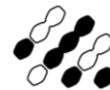
Exceptional efficiency

Bridge diodes have been replaced with an active bridge rectifier to improve efficiency.



Long-lasting reliability

Built with Infineon industrial-grade IC chips for high quality performance and long-lasting reliability.



MasterCTRL

Digital monitor

Cooler Master's MasterCTRL software allows users to monitor temperature, current load, and overall performance.

SPECIFICATIONS

Product Name		X Silent Edge Platinum 850
Item Code		MPS-8501-AZAP
ATX Version		ATX 12V Ver. 3.1
PFC		Active PFC
Input Voltage		100 - 240V
Input Current		9 - 5A
Input Frequency		50 - 60Hz
Dimensions (L x W x H)		180 x 150 x 86mm
Fan Size		N/A
Fan Bearing		N/A
Fan Speed		N/A
Efficiency		≥ 92% @ Typical Load
80 PLUS Rating		80 PLUS Platinum
ErP 2014 Lot 3		Yes
Operating Temperature		0 ~ 40°C
Power Good Signal		100 - 150ms
Hold Up Time		≥ 16ms
MTBF		>100,000 hours
Protections		OPP / OVP / OTP / OCP/ SCP / UVP / Surge & Inrush Protection
Regulatory		cUL, TUV, CE, FCC, BSMI, CCC, EAC, RCM, UKCA / BIS, KC (based on region's request.)
Connectors	ATX 24 Pin	x1 = 1x (650mm)
	EPS 4+4 Pin	x1 = 1x (650mm)
	EPS 8 Pin	x1 = 1x (650mm)
	SATA	x12 = 3x (500+150+150+150mm)
	Peripheral 4 Pin	x4 = 1x (500+120+120+120mm)
	PCI-e 6+2 Pin	x4 = 4x (550mm)
	12V-2x6	x1 = 1x (650mm)
	USB 10P	x1 = 1x (800mm)

AC INPUT	100-240V~, 9 - 5A , 50 - 60Hz					
DC OUTPUT	+3.3V	+5V	+12V		-12V	+5Vstb
	20A	20A	70.8A	62.5A	0.3A	3A
TOTAL POWER	120W		849.6W	750W		
			For 850W	For 750W	3.6W	15W
	850W For 110V-240V , 750W For 100V-110V					

PACKING INFORMATION

Cable Type	EAN	UPC
MPS-8501-AFAP-BUS	4719512144800	884102117121
MPS-8501-AFAP-BUK	4719512144817	884102117138
MPS-8501-AFAP-BEU	4719512144824	884102117145
MPS-8501-AFAP-BST	4719512144831	884102117152
MPS-8501-AFAP-BAU	4719512144848	884102117169
MPS-8501-AFAP-BBR	4719512144855	884102117176
MPS-8501-AFAP-BKR	4719512144862	884102117183
MPS-8501-AFAP-BTW	4719512144879	884102117190
MPS-8501-AFAP-BJP	4719512144886	884102117206
MPS-8501-AFAP-BIN	4719512144893	884102117213
MPS-8501-AFAP-BWO	4719512144909	884102117220
MPS-8501-AFAP-BNL	4719512144916	884102117237
MPS-8501-AFAP-BHK	4719512144923	884102117244
MPS-8501-AFAP-BBS	4719512144930	884102117251
MPS-8501-AFAP-BBU	4719512144947	884102117268
MPS-8501-AZAP-BCN	4719512145074	N/A
MPS-8501-AZAP-BBC	4719512145081	N/A

Net Weight	4.5 kg
Gross Weight	5.2 kg
Package Dimensions (W x L x H)	382 x 224 x 126mm
Carton Dimensions (W x L x H)	396 x 265 x 250mm
Unit / Carton	2pcs
Carton / Pallet	120pcs

- All images and descriptions are solely for example purposes.
- Specifications, features, and prices are subject to change without notice.
- Specifications, appearances, and features may vary by model and region. Please refer to official specification pages for full details.
- Unless otherwise stated, all performance claims are based on theoretical performance. Actual figures may vary in real-world situations.
- Any configuration other than original product configuration is not performance guaranteed.