

msi

PRO AP272P 14M

Business & Productivity All-in-One PC

Infokit v1.2



THE LEAP TO
SINGULARITY

msi

Be Your Window To The World

PRO AP272P Series

Business & Productivity All-in-One PC



MSI

PRO AP272P 14M

Business & Productivity All-in-One PC

msi

Tailored for
Professional Users

Optimal Care
with EyesErgo
Technology

Reliable Choice
for Business

Design with
Convenient
Versatility

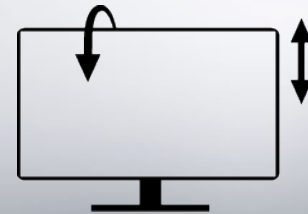


PRO AP272P 14M – Key Features

msi



MSI recommends
Windows 11 Pro for business



Adjustable Stand



Desktop CPU up to
Intel® Core™ i7 Processor 14700



DDR5

**dTPM
2.0**



IR FHD
Camera



Windows
Hello

**tobii
AWARE**

Enhanced
Privacy

PRO AP272P Series

msi



Adjustable Stand
-5° ~ 20° (Tilt)
0 ~ 100 mm (Height)



27-inch IPS with
Full HD (1920 x 1080)



VESA
Mountable



IR FHD Webcam
with **Webcam Cover**

Resilient and Pioneering Spirit of Your Business

msi

Your business should be empowered to stop at nothing while navigating your journey with the MSI Business & Productivity Series products.



Business



Hostel & Restaurant

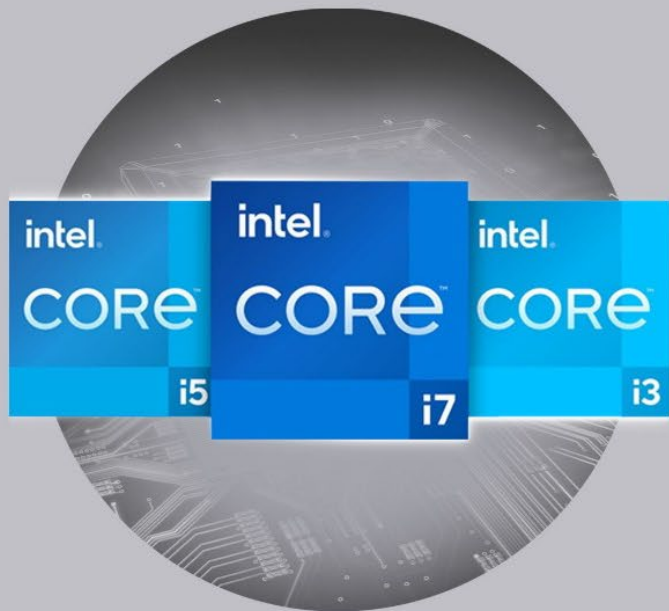


Education



Medical & Science

Tailored for Professional Users



Equipped with up to 14th Gen Intel® Core™ i7 Processor 14700 Desktop Processor with 20 cores and 28 threads, it provides faster and more reliable performance.

It also features 5.40 GHz with Intel Turbo Boost Max Technology 3.0, which allows users to easily multitask various applications.

Up to
**Core i7 Processor
14700**

Support
Windows 11 Pro

Up to 5600MHz
DDR5 64GB
Dual Channel Memory

*The actual specification will vary by model.

DDR5 Dual-Channel Memory

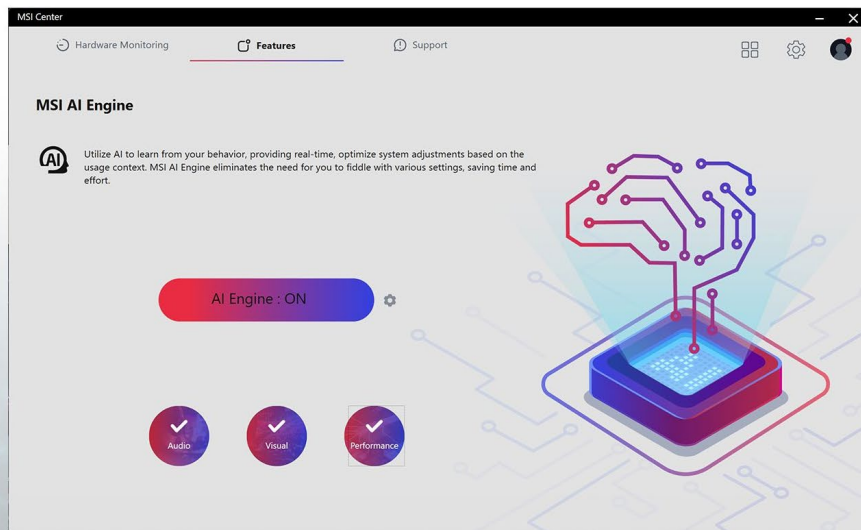
DDR5 memory with dual-channel can enhance work efficiency and quality, processing large amounts of data and complex multitasking quickly and reducing waiting times and delays.

*The actual specification will vary by model.



MSI AI Engine

MSI AI Engine automatically detects user scenarios and adjusts performance, sound effects, and display mode accordingly, eliminating the need for manual adjustments.



*Please install the MSI AI Engine from the MSI Center.

*The interface and functionality may differ due to version change.

Optimal Care with EyesErgo Technology

msi



The PRO AP272P Series is designed to promote well-being.
The MSI EyesErgo technology features TÜV-certified Anti-Flicker and Less Blue Light,
an anti-glare panel, and an ergonomic stand to help safeguard your eyes.

MSI Eye Care:

Anti-Flicker + Less Blue Light Technology + Anti-Glare Display

MSI Anti-Flicker, Less Blue Light technologies and anti-glare panel help to protect your eyes over extended periods of viewing your data and research.



PRO AP272P Series



Without Anti-Flicker



Without Less Blue Light



Without Anti-Glare

100Hz High Refresh Rate

Having a high refresh rate display can make for a better viewing experience and put less strain on eyes by displaying more images in the same amount of time, making for a smoother and more enjoyable experience.

Say goodbye to blurry images and hello to crystal-clear visuals.



Adjustable Stand

msi



With the ability to adjust both the tilt and height, you'll always be able to manage the E-commerce comfortably and efficiently, no matter your position.

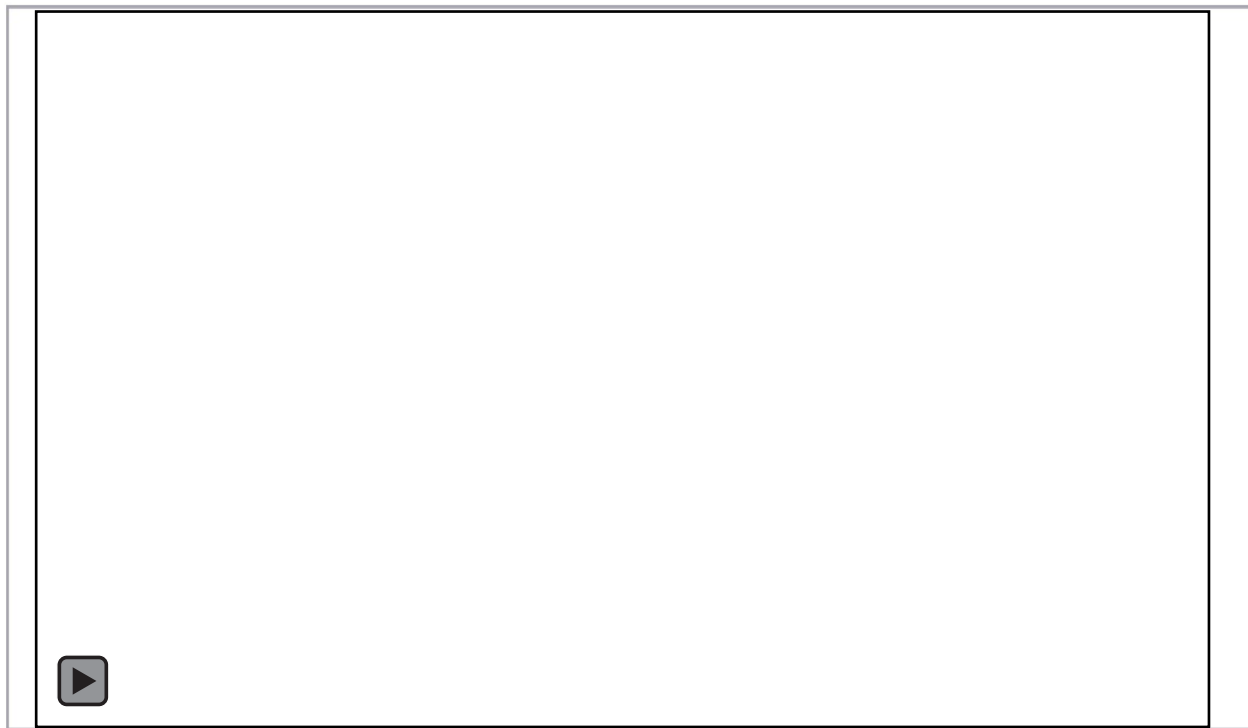
Experience ease and convenience like never before.

Tool-less & VESA Mountable Design



The PRO AP272P series features a tool-free assembly and disassembly design that provides a convenient user experience.

Additionally, it supports the VESA standard, making it easy to mount on the wall at home or in the office.



Reliable Choice for Business



With the robust and secure design, the PRO AP272P series ensures that systems operate seamlessly and that sensitive data is safeguarded from unauthorized access.



Reliable Choice for Business

msi

dTPM Module



dTPM 2.0 technology provides hardware-based security functions. Sensitive data and passwords can be stored with encryption for advanced protection.



Reliable Choice for Business

msi

Kensington Lock



The Kensington lock design is a reliable and efficient method of deterring theft.

By physically tethering the PRO AP272P to a secure object, Kensington lock is particularly useful in safeguarding the device and the valuable data in it.



IR Full HD Webcam with Webcam Cover

msi

IR FHD WEBCAM

Enhance the online conference experience or course presentation with the use of an IR Full HD webcam.

WINDOWS HELLO

The Windows Hello biometric authentication system provides a faster and more secure way to log in to your PC.

WEBCAM COVER

Always cover the webcam when not in use to stay safe.

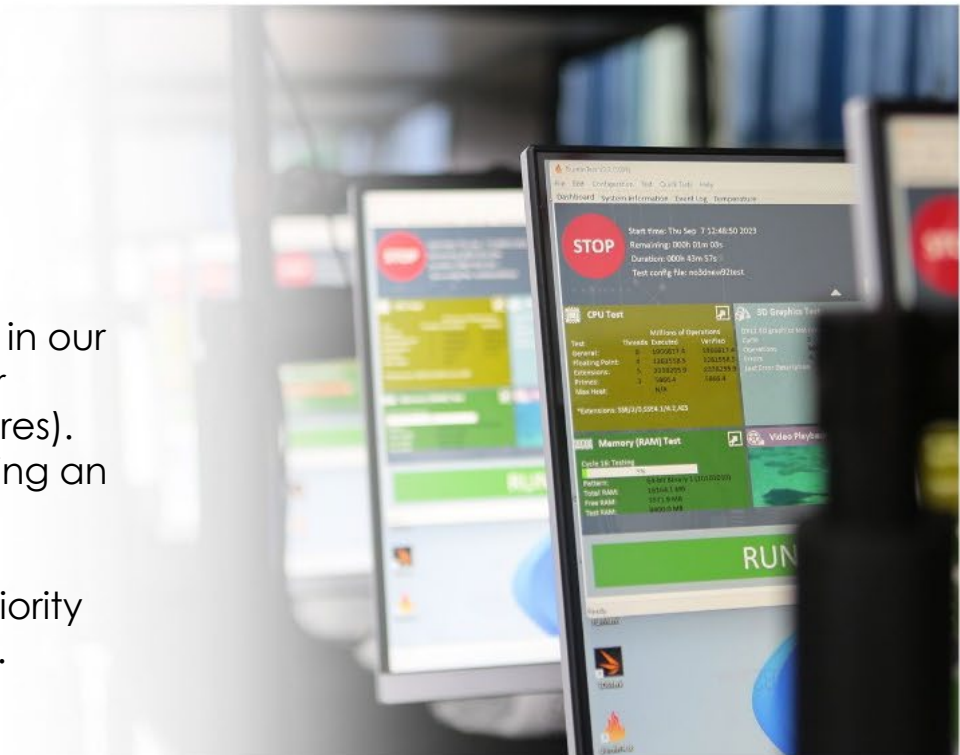


24 / 7 Qualified Reliability Test



Our relentless commitment to quality is reflected in our extensive reliability testing, which generates over 246,000 hours of MTBF (Mean Time Between Failures). We assure 24/7 reliability and availability, delivering an effortless user experience.

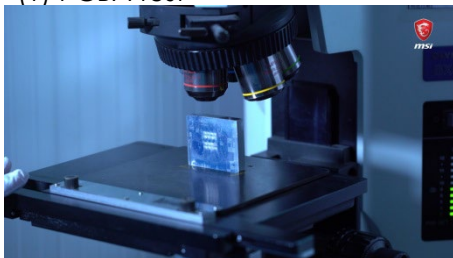
Quality is not just a buzzword for us, it's our top priority to deliver a hassle-free and high-quality product.



Intensive Quality testing

msi

(1) PCBA test



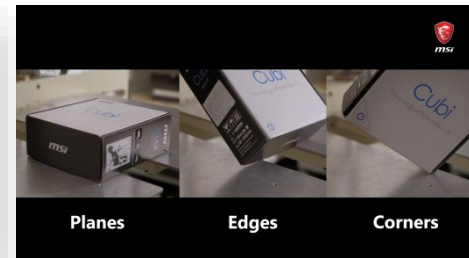
(2) Motherboard test



(3) Vibration test (X & Y Axis)



(4) Drop test



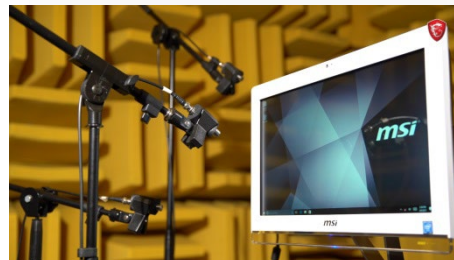
(5) Chamber test (Temp. & Humidity)



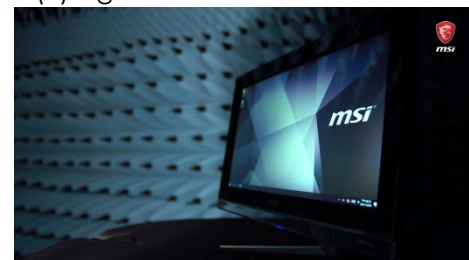
(6) Infrared (IR) test



(7) Acoustic test



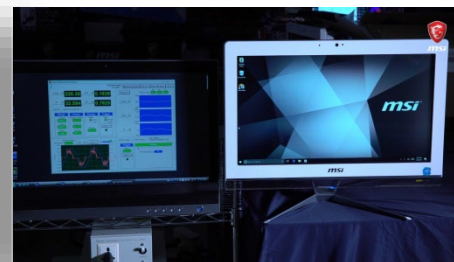
(8) Signal test



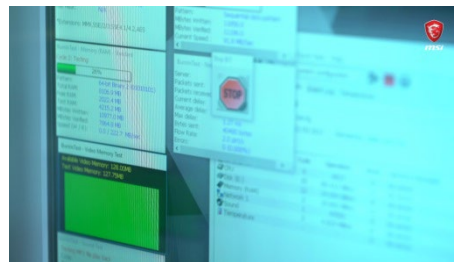
(9) I/O port life test



(10) Power test



(11) System performance test



MSI Quality Video <https://youtu.be/8GaxL6BWZQE>

Uncompromising Product Quality

msi

MSI products exemplify uncompromising quality.

Through strict adherence to the MIL-STD-1916 testing standard in our factory inspections, we consistently achieve excellence in performance, durability, precision, and reliability.

This commitment places MSI at the forefront, enabling us to consistently deliver outstanding designs to customers.

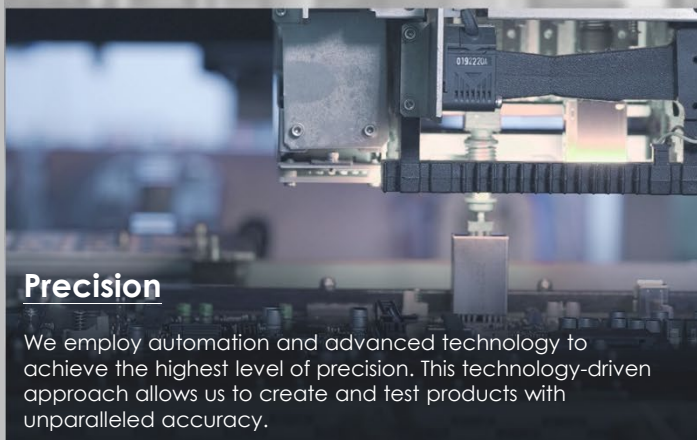
MSI modernized factory offering high-quality products Video:

<https://www.youtube.com/watch?v=ZvZ2GPn7CMc>



Performance Assurance

MIL-STD-1916 testing guarantees MSI products meet high-performance standards, providing reliable and professional experiences with desktop PCs at their best.



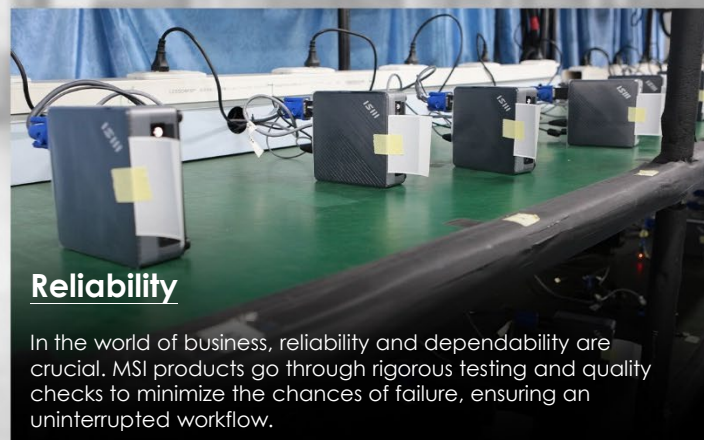
Precision

We employ automation and advanced technology to achieve the highest level of precision. This technology-driven approach allows us to create and test products with unparalleled accuracy.



Durability

MIL-STD-1916 testing ensures every component meets strict durability standards, making MSI products capable of lasting through extended gaming and work sessions while delivering reliable performance.



Reliability

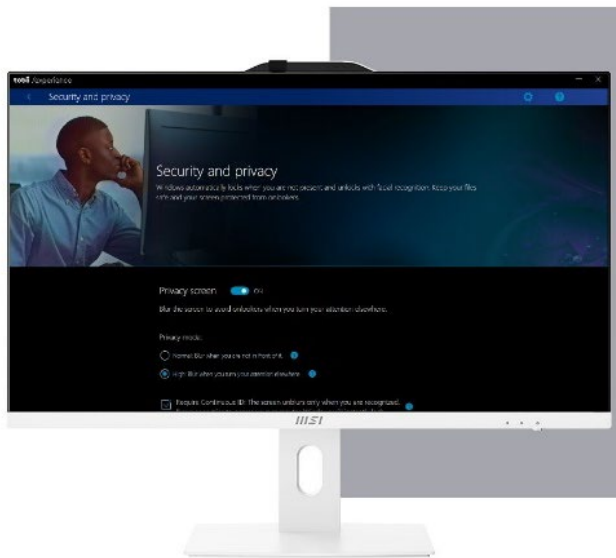
In the world of business, reliability and dependability are crucial. MSI products go through rigorous testing and quality checks to minimize the chances of failure, ensuring an uninterrupted workflow.

Protect Your Privacy with Tobii Aware



tobii AWARE

To assure users' information security, AP272P features Tobii Aware software which is a set of smart features that enable users to increase their privacy, security and productivity.



Privacy Screen

The contents of the screen are blurred when the user looks or steps away, and un-blurred only for the correct user.

Auto-Lock

Enhance privacy and security by automatically locking the screen shortly after the user leaves.

Peeker Detection

This feature uses subtle visual clues to let you know when someone behind you is looking at your screen. Aware also offers automatic or reaction-based privacy screen blur to protect the information in situations that require a high level of privacy.

Dim Screen

Improve power efficiency in a natural and unobtrusive way. Your screen brightness will dim and undim when you step away and come back.

Windows Snap

Make your life easier by snapping your selected window between screens based on your attention.

Stay Awake

No need to worry about your device dimming or going to sleep when you aren't active. Keep your computer awake as long as you are there.

MSI Cloud Center

msi

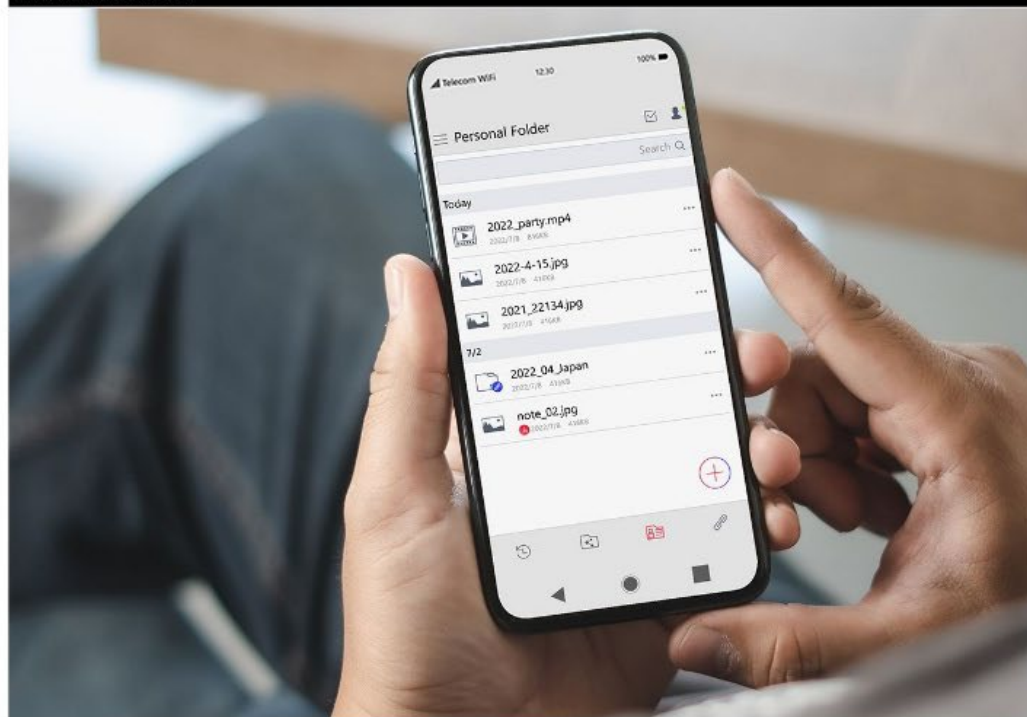


Fast, secure & wireless backup
between PC, Android & iOS Devices

More information, please visit:

<https://www.msi.com/Landing/MSI-Cloud-Center>

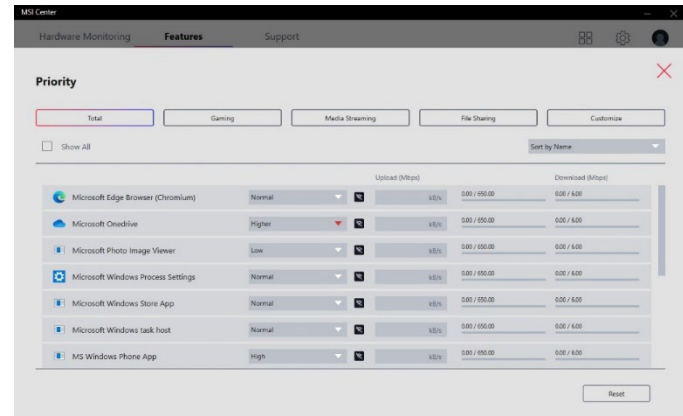
MSI Cloud Center



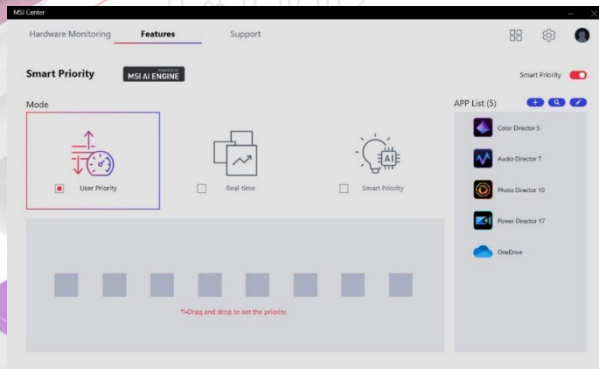


MSI Center

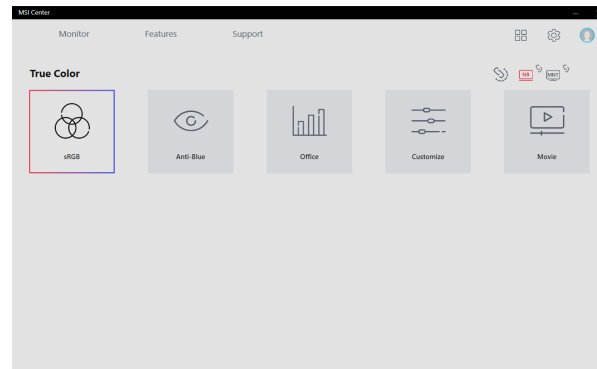
The MSI Center takes optimization to the next level with customizable UI that avoid unnecessary workload for your system and easily adjustable system modes; it helps to prioritize & allocate the resource on your hand and accelerate the performance of those software which you work with every day.



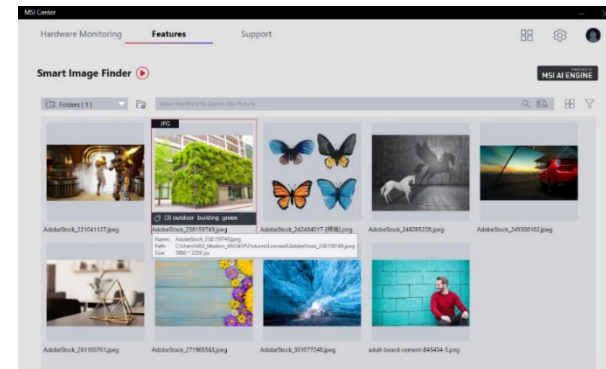
LAN Manager provides you the best online traffic experience



Prioritize your work with Smart Priority



Setup your monitor color for different use



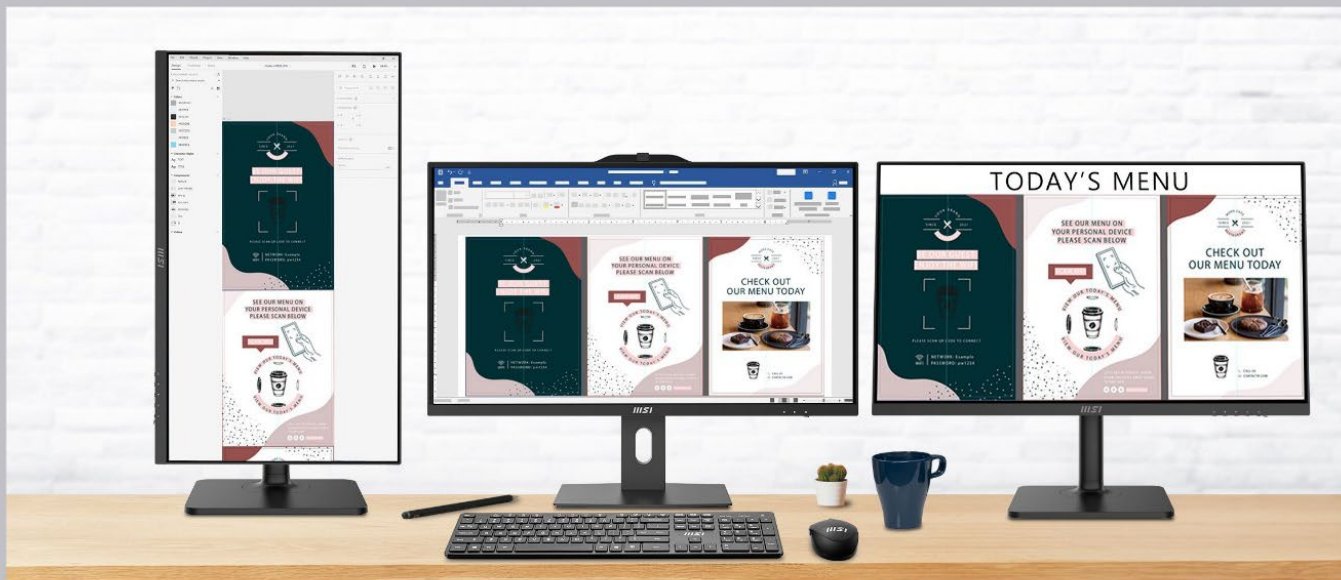
Easily organize and find your pictures with Smart Image Finder

*The interface and functionality may differ due to version change. Please download the latest MSI Center APP through Microsoft Store.

Triple Display with HDMI™ & DP Output



By connecting two additional monitors through HDMI™ and DP output ports, users can easily multitask and improve the productivity.



Dual Display with a Second Monitor

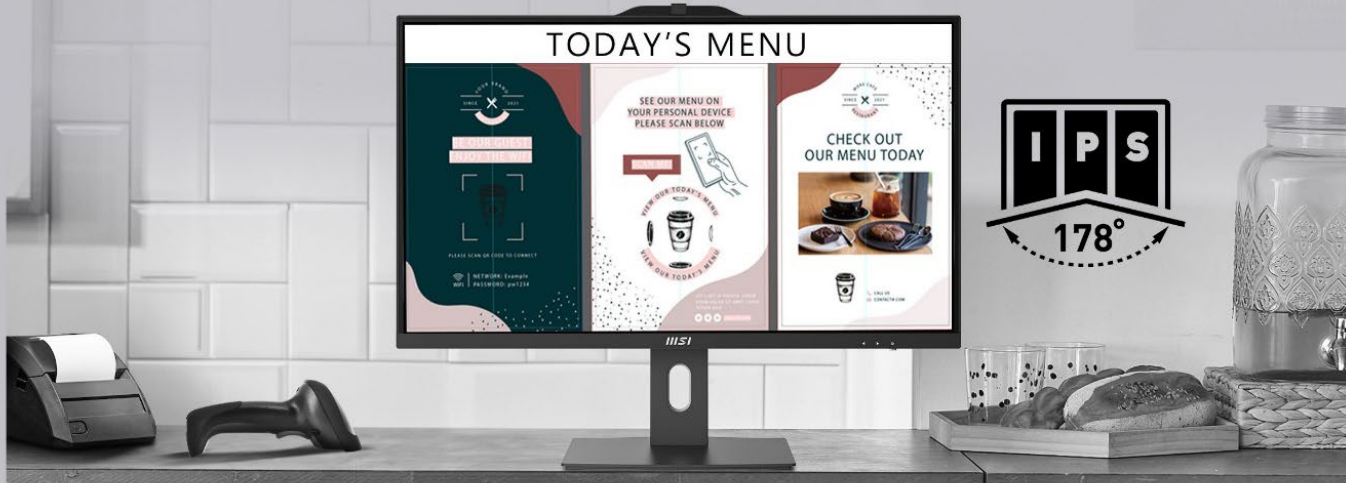
Maximize productivity and enhance the e-commerce experience with the power of dual displays. Experience the benefits of a seamless workflow and take efficiency to the next level.



IPS Panel with 178° Viewing Angle

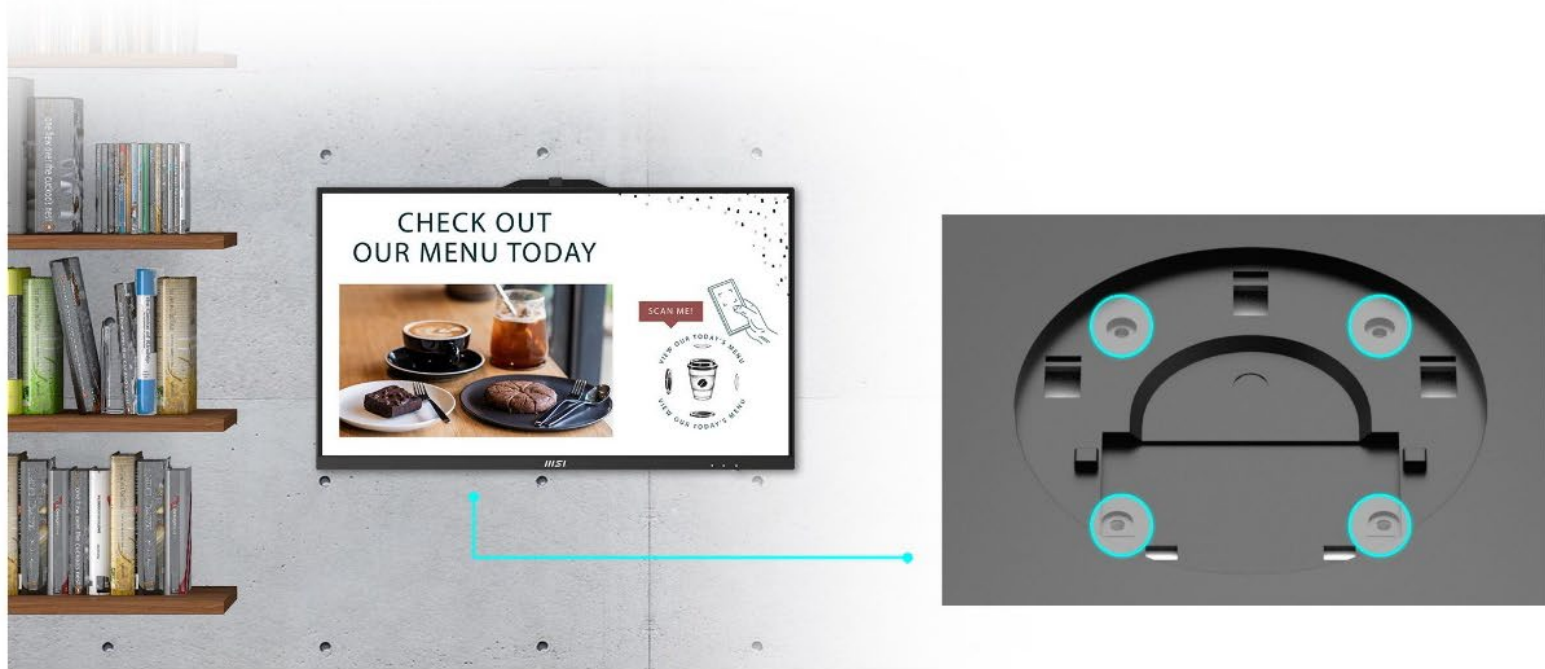
msi

IPS panel offers 178-degree wide viewing angle, optimizing screen color and brightness for consistent picture quality from any angle.

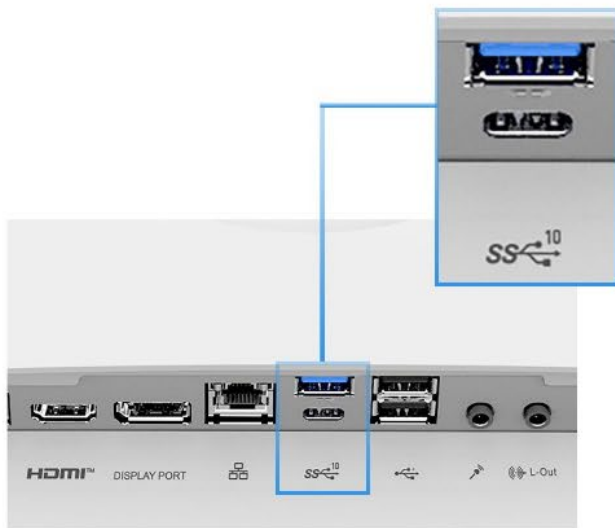


VESA Mountable Design

The PRO AP272P series can be conveniently mounted on any surface that supports VESA. It can be utilized as a display for public service, providing an intuitive and professional experience.



USB 3.2 Gen 2 Type C & Type A



USB 3.2 TYPE-A
GEN 2 TYPE-C

USB 3.2 Gen 2 Type-C and Type-A ports provide 5x faster transfer rates (up to 10Gbps) than USB 2.0.

This enables faster downloading of transaction logs and copying of data to external storage.

Connect All of Your Productive Devices

msi

Wi-Fi 6E has better security, improved signal quality in areas with interference, and can connect to more devices simultaneously, achieving speeds up to 2.4Gbps.

Up to

3X

Faster Gigabit Speeds

Up to

75%

Lower Latency

Support

MU-MIMO

Protocols



*The actual specification will vary by model.

DTS Audio Enhancer for Immersive Audio

msi



Experience lossless audio and premium sound quality with DTS Audio Processing, immersing yourself in natural-sounding music, videos, and more as it was intended.

Design with Green

msi



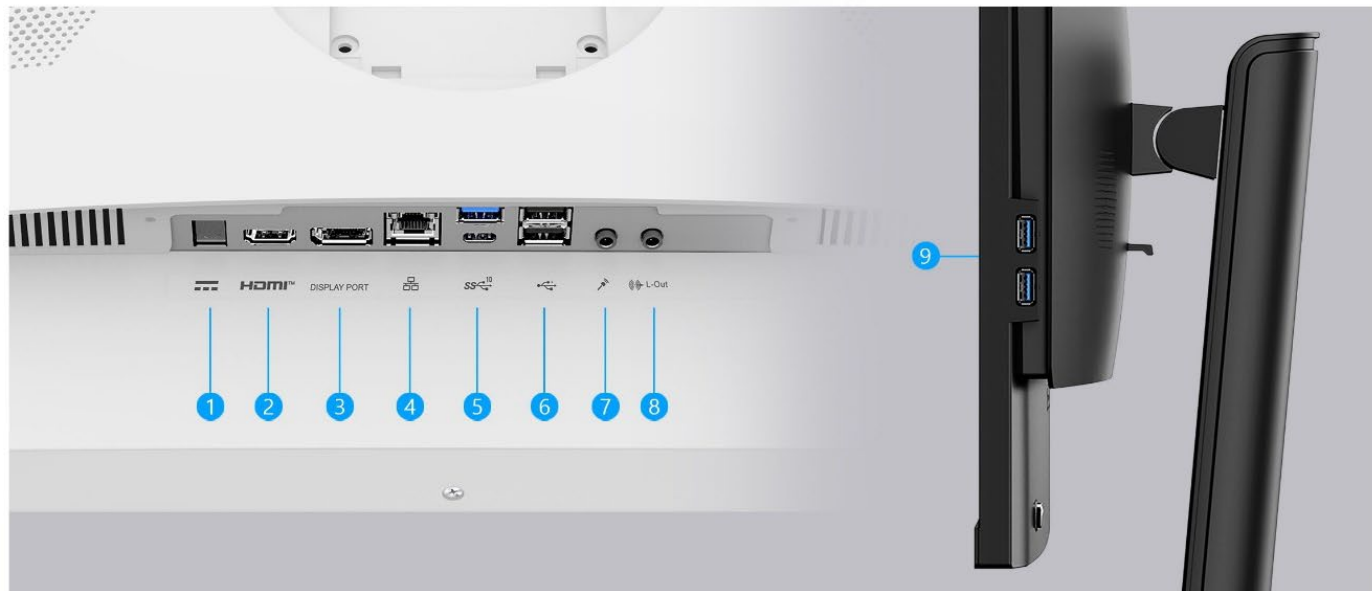
Thank you for saving the planet with us

MSI is committed to mitigating the environmental impacts of its business activities through green production and supply chain management.

The PRO AP272P series meets various energy requirements, such as CE/CB, ENERGY STAR, ROHS, FCC, UL, etc., to reduce energy consumption, improve efficiency, and protect our only planet.



PRO AP272P 14M I/O Port



- 1. 1 x DC Jack
- 2. 1x HDMI™ out (supports 4K @60Hz as specified in HDMI™ 2.1)
- 3. 1 x DisplayPort out (1.4)
- 4. 1 x RJ-45 LAN
- 5. 1 x USB 3.2 Gen 2 Type C /

- 6. 2 x USB 2.0 Type A
- 7. 1 x Mic-in
- 8. 1 x Line-out
- 9. 2 x USB 3.2 Gen 1 Type A

| | |
|---------------------|---|
| CPU | Intel® Core™ i7 processor 14700 (33M Cache, 2.10 GHz up to 5.40 GHz) Intel® Core™ i5 processor 14400 (20M Cache, 2.50 GHz up to 4.70 GHz) Intel® Core™ i3 processor 14100 (12M Cache, 3.50 GHz up to 4.70 GHz) |
| OS | Windows 11 Home Windows 11 Pro - MSI recommends Windows 11 Pro for business |
| CHIPSET | Intel® H610 |
| STORAGE | 1x M.2 SSD (PCIe / SATA Auto Switch) 1x 2.5" HDD / SSD |
| MEMORY | 2x DDR5 up to 5600 MHz SO-DIMMs, up to 64GB *5600 MHz (with Core i5 processor above and 1R memory) *5200 MHz (with Core i5 processor above and 2R memory) *4800 MHz (with Core i3 processor) *The system speed follows the Intel POR (Plan of Record) design. Actual specifications will vary depending on the model. |
| GRAPHICS | Intel® UHD Graphics |
| PANEL RESOLUTION | 27" IPS Grade Panel LED Backlight (1920*1080 FHD) with MSI Anti-Flicker technology |
| TOUCH PANEL | Non-touch |
| AUDIO SPEAKER | 2x 3W |
| I/O | Side: 2x USB 3.2 Gen 1 Type A Rear: 1x USB 3.2 Gen 2 Type C, 1x USB 3.2 Gen 2 Type A, 2x USB 2.0 Type A, 1x RJ45, 1x HDMI™ out (supports 4K @60Hz as specified in HDMI™ 2.1), 1x DP out (1.4), 1x Mic-in, 1x Line-out |
| AUDIO | Realtek ALC897 |
| LAN | Intel® I219-V |
| WIRELESS LAN | Intel Wi-Fi 6E AX211 / Intel Wireless AC 9462, either one |
| BLUETOOTH | 5.3 (for AX211) / 5.1 (for AC 9462) |
| WEBCAM | Built-in FHD Webcam which supports Windows Hello Removable webcam cover design |
| KEYBOARD / MOUSE | Optional |
| AC ADAPTER | 120W |
| ADJUSTMENT (TILT) | -5° ~ 20° |
| ADJUSTMENT (Height) | 0 ~ 100 mm |
| DIMENSION (WxDxH) | 613.49 x 362.46 x 499.51 mm (24.15 x 14.27 x 19.67 inch) |
| NET WEIGHT | 6.65 kg (14.66 lbs) |
| GROSS WEIGHT | 12.25 kg (27.01 lbs) |
| CERTIFICATES | FCC, CB/CE, UL & CUL, VCCI, RCM |
| NOTE | Support VESA wall mount kit with specific screws, please contact with service center. |

PRO AP272P 14M Specification



Successful & Stylish B2B projects



Over the past years, MSI has successfully supported Countless of commercial projects, including government tenders, restaurant & hotel facilitation, shopping mall navigation projects, school & university developments and professional office projects.

Find more details about many of these projects on: <https://www.msi.com/pro-projects/global>





THE LEAP TO SINGULARITY

Official Partner

msi



AMG
MOTORSPORT



PCR
POST-CONSUMER RECYCLED

META
READY

