

msi

PRO MP245G Infokit

V1



THE LEAP TO
SINGULARITY

PRO MP245G

Business & Productivity Monitor

IIISII



A person in a light blue shirt and dark pants stands on a jagged rock peak, looking out over a vast mountain range under a golden sunset sky. The person is silhouetted against the bright light. The background shows layers of mountains fading into the distance.

Embrace Sustainability with the Eco-Friendly PRO MP245G Monitor

Explore our Eco-friendly monitor PRO MP245G, meticulously designed to meet stringent environmental standards, ensuring a cleaner, greener world. Featuring cutting-edge enhancements like EyesErgo for user well-being and a silky-smooth 100Hz refresh rate, elevate your experience while making a sustainable choice.



ECO-Friendly

Our Products meet rigorous environmental standards and promote sustainability

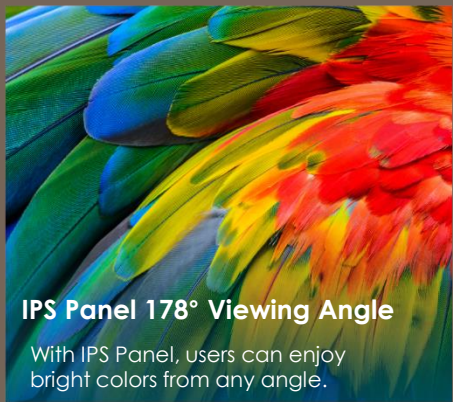
100Hz High Refresh Rate

Flawless Flow, No more Stutters. Provides smoother and more responsive visuals.



EyesErgo

MSI EyesErgo Tech promotes eye health and comfort, enhancing user well-being.



IPS Panel 178° Viewing Angle

With IPS Panel, users can enjoy bright colors from any angle.



Productivity and Connectivity

Boost productivity with user-friendly features.



EyesErgo Tech, Your Health Protector

Optimize well-being and work efficiency with our display's ergonomic design and eye care features. Enhanced comfort and promote healthier productivity.



Eye Care



Ergonomic

MSI Eye Care Technology: Eye Care Panel



TUV Certified Anti-Flicker, Less Blue Light function reduces users' eye fatigue when working for long hours.

Anti-Glare panel minimizes the reflection and makes users view clearly easily.



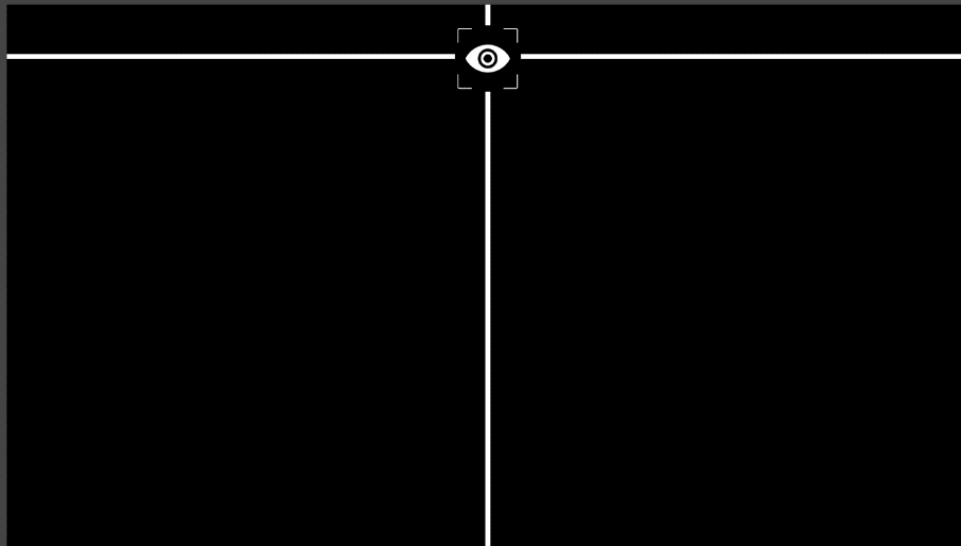
MSI Eye Care Technology: Eye-Q Check



With Eye-Q Check, you can self-assess your eye health while working long hours, preventing eye problems from escalating.

Posture Correction

MSI recommends you to sit up straight and adjust your eye position to one-ninth of the top edge of the screen. A good sitting posture can effectively prevent neck and shoulder pain.



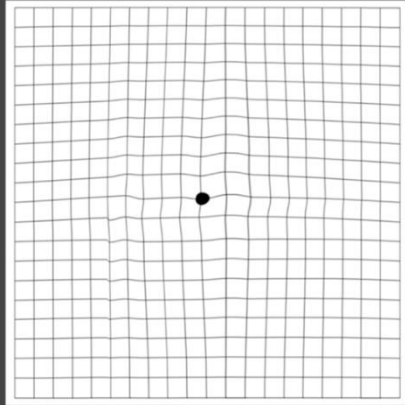
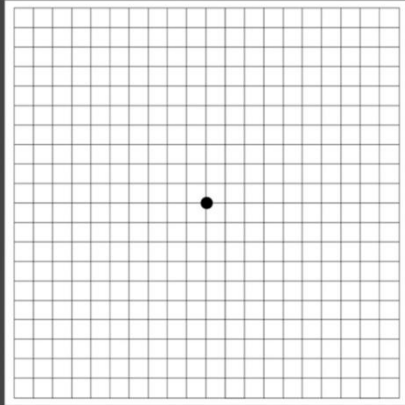
MSI Eye Care Technology: Eye-Q Check



Detect early signs of retinal disease with Amsler Grid

Amsler Grid

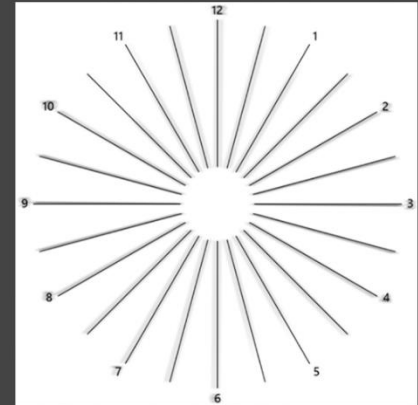
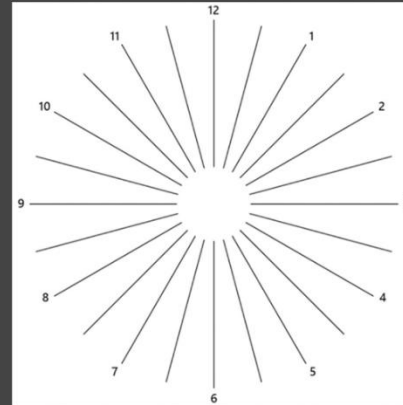
MSI recommends you to take a rest for 20 minutes if any of the lines in the grid appear wavy, blurred or distorted; or if some boxes in the grid don't look like a square or the same size.



Astigmatism self-test

Astigmatism

To test, cover your left eye with your left hand and look closely at the image, then do the same with your right eye. MSI recommends you to take a rest for 20 minutes if some lines appear greyer than others.



MSI Eye Care Technology: 100Hz & 1ms



100Hz + 1ms MPRT
Flawless Flow, No More Stutters.

Attend the smoothest online conference call and show the perfect advertising video to customers with a 100Hz refresh rate.

VESA's research shows that for 95% of users, 85Hz Refresh Rate has become a de facto standard for normal use that shows "flicker-free" images.

"85Hz – While not a "video-friendly" rate, 85Hz has become a de facto standard for PC displays wishing to meet the strictest ergonomic requirements for a "flicker-free" image. At this rate, typical CRT-based computer display, under standard viewing conditions, will appear "flicker-free" to greater than 95% of the population."

- the VESA Coordinated Video Timings Standard Version 1.2

Ergonomic Design: Tilt Adjustable

Working in a suitable position not only has a positive impact on job satisfaction and productivity but can also contribute to overall health and well-being.



IPS Panel 178° Viewing Angle



**Vibrant Collaboration,
Seamless Precision**

IPS panels enhance work with wide angles, accurate colors for collaboration, and assuring product colors. Promote productivity during extended sessions.

A man and a woman in business attire are standing on a balcony, engaged in a conversation. The woman, on the left, has dark curly hair and is wearing a white blouse. The man, on the right, has short brown hair and a beard, wearing a blue button-down shirt under a dark blazer. He is holding a smartphone in his left hand. They are both smiling and looking towards each other. The background shows a blurred cityscape with brick buildings and a balcony railing in the foreground.

Productivity & Connectivity

Empower Productivity, Unleash Connectivity

PRO MP245 Series is the caring assistant that boosts your productivity.



VESA Mountable

The PRO MP245G supports the standard VESA mount. You can mount the monitor with MSI monitor arm or mount it on the wall and make the desk tidier and cleaner.



Built-in Speakers

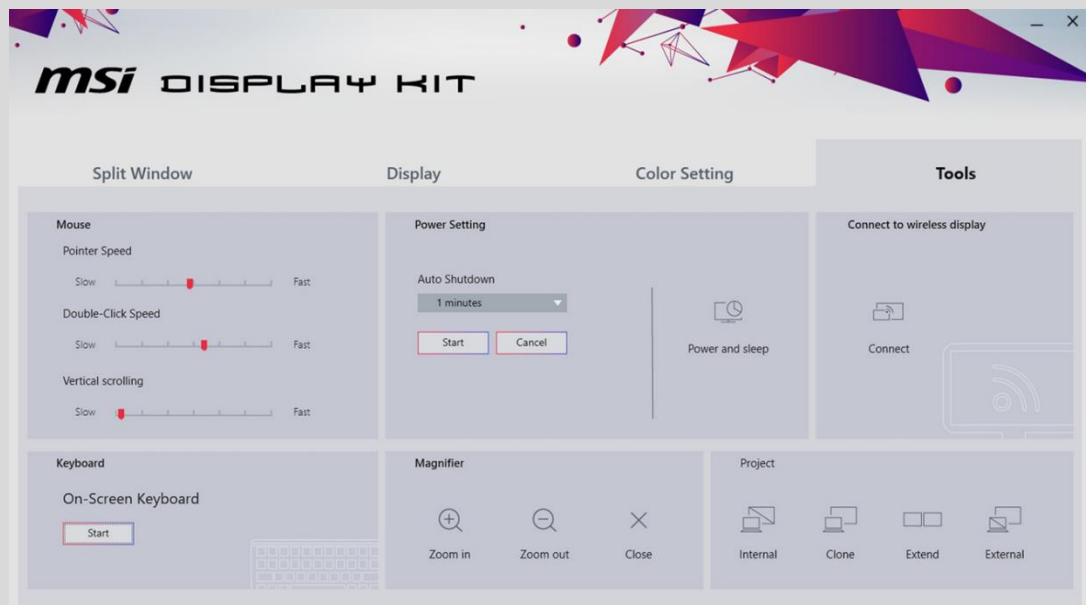
With two built-in speakers, users were allowed to listen to audio files, to attend online conferences, or to edit videos at any time without carrying an external speaker or wearing a headphone.

Complete I/O Ports

No problem at all if you'd like to work or learn with different devices. PRO MP245 Series supports one HDMI, one DP and one D-Sub (VGA), it keeps the flexibility with dual sources for your multiple devices.

Simplicity At Your Fingertips

Display Kit App



The MSI exclusive software Display Kit provides the most convenient tool, the proper display that allows you to read and enjoy the image at the same time & color mode to you while working or everyday.



Connect to
Wireless Display



Layout Setting



Auto-Shutdown



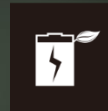
Zoom in/ out



Project Mode

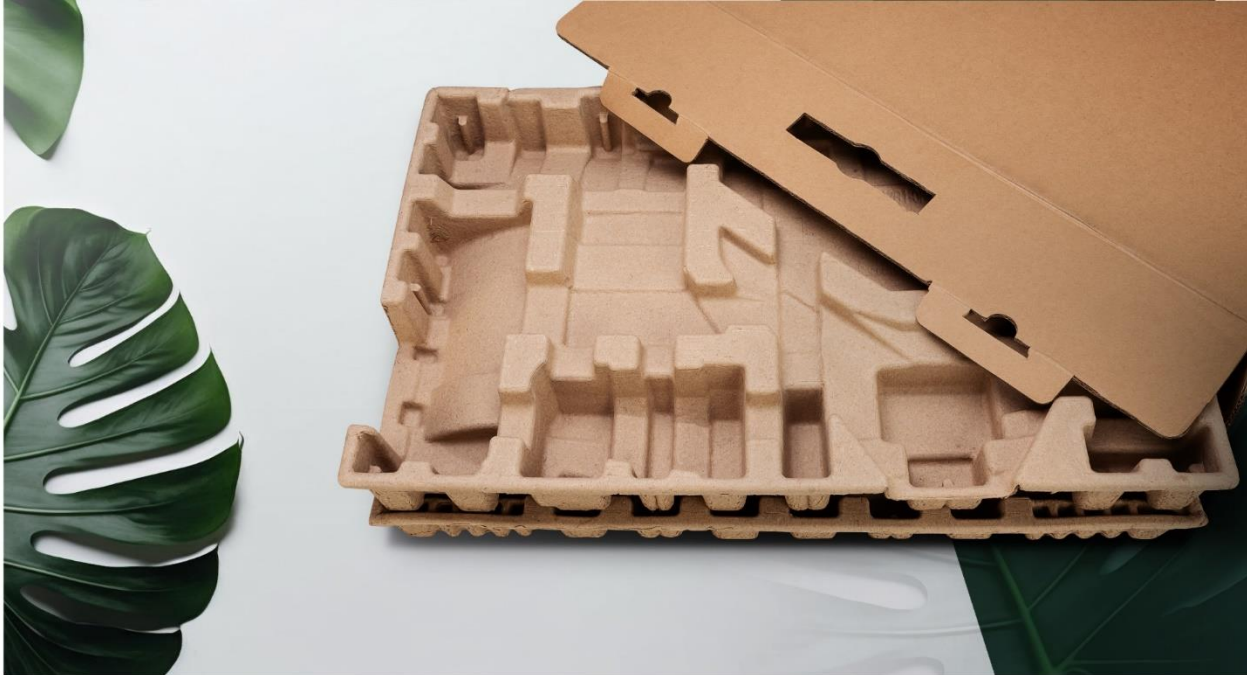
Power Saving Product

- ✓ Power Saving Mode
- ✓ Energy Star 8.0



It is our responsibility to promote sustainable development and we proudly offer an eco-friendly product, contributing to a greener environment.





Sustainable Packing Solutions

Reduce the environmental impact with our sustainable solutions.

A Better Future with MSI Monitors.

EPEAT is the world's premier global ecolabel for electronics. MSI monitors provide sustainable products inside out. Let's protect the earth with actions.

*Micro-Star International Co., Ltd. registers products in EPEAT. See www.epeat.net for registration status and tier levels by country.



PRO MP245G Specification



1. 1x AC-in
2. 1x DP 1.2
3. 1x HDMI™ 1.4b (FHD@100Hz)
4. 1x D-Sub (VGA)
5. 1x Line-in
6. 1x Headphone-out
7. 1x Kensington Lock
8. 5-Way Navigator

Type / Size	23.8"
Active Display Area (mm)	527 (H) x 296 (V)
Curvature	Flat
Panel Type	IPS
Resolution	1920 x 1080 (Full HD)
Pixel Pitch	0.2745 (H) x 0.2745 (V)
Aspect Ratio	16:9
Brightness (nits)	300 cd/m ²
Contrast Ratio	1300:1
Refresh Rate	100 Hz
Response Time	1ms (MPRT) / 4ms (GtG)
View Angles	178° (H) / 178° (V)
sRGB	102% (CIE 1976)
Surface Treatment	Anti-glare
Display Colors	16.7M
Color Bit	8 bits (6 bits + FRC)
Video Interface	1x HDMI 1.4b (FHD@100Hz)
	1x DP 1.2
	1x D-Sub (VGA)
Audio Interface	1x Line-in
	1x Headphone-out
Speaker	2 x 2W
Power Type	Internal Power
Power Input	100~240V, 50~60Hz
Adjustment (Tilt)	-5°~20°
Kensington Lock	Yes
VESA Mounting	100 x 100 mm
Dimension (W x D x H)	539.8 x 207.2 x 414.1 mm
	(21.25 x 8.16 x 16.30 inch)
Weight (NW / GW)	3.19 kg (7.03 lbs) / 5.12 kg (11.29 lbs)
	WW carton: 600 x 125 x 400 mm
Dimension (W x D x H) With Carton	(23.62 x 4.92 x 15.75 inch)
	Outer: 618 x 143 x 430 mm
	(24.33 x 5.63 x 16.93 inch)
Note	HDMI: 1920 x 1080 (Up to 100Hz)
	DisplayPort: 1920 x 1080 (Up to 100Hz)
	D-Sub (VGA): 1920 x 1080 (Up to 60Hz)
	Adaptive-Sync Support
	Display Kit Support
	Plan to Pass EPEAT Silver (by country)

msi



msi

THE LEAP TO SINGULARITY

