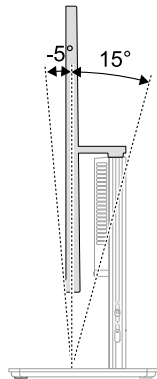
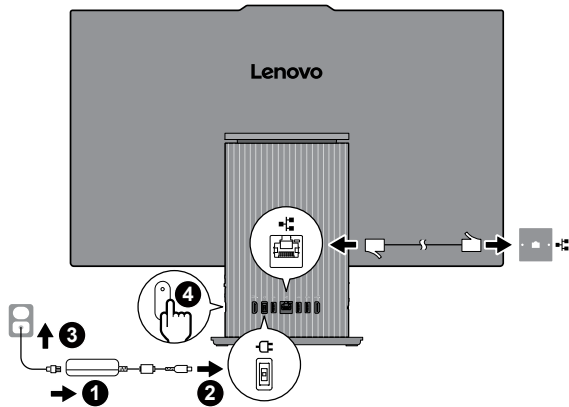


Lenovo  
**IDEACENTRE**

# IdeaCentre AIO

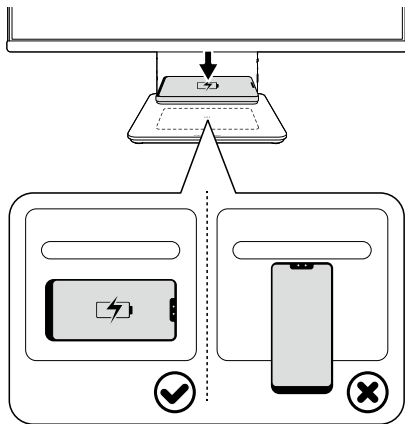
**Lenovo**



**i** Scan the *User Guide* QR code to learn more information about the USB transfer rate.



## Wireless Charging\*



**Note:** Place the phone horizontally on the center of the wireless charging pad to activate wireless charging.

\* For selected models

[English]

## European Union (EU) / United Kingdom (UK) — radio frequency and power

This radio equipment operates with the following frequency bands and maximum radio-frequency power:

Technology	Frequency band [MHz]	Maximum transmit power
WLAN 802.11b/g/n/ax	2400 - 2483.5	< 20 dBm

Technology	Frequency band [MHz]	Maximum transmit power
WLAN 802.11a/n/ac/ax	5150 - 5725	< 23 dBm
WLAN 802.11a/n/ac/ax	5725 - 5875	< 13.98 dBm
Bluetooth BR/EDR/LE	2400 - 2483.5	< 20 dBm

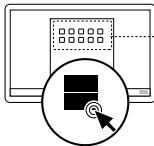
**Note:** Not all wireless bands may be enabled depending on your product configuration. Usage of this device is limited to indoor locations in the bands 5150 - 5350 MHz.



### User Guide Access



[pcsupport.lenovo.com](https://pcsupport.lenovo.com)



Reduce  
Reuse  
Recycle



For FSC Mix logo only

First Edition  
(January 2024)

Lenovo, Lenovo logo, IdeaCentre, and IdeaCentre logo are trademarks of Lenovo.

© Copyright Lenovo 2024.

#### LIMITED AND RESTRICTED RIGHTS NOTICE:

If data or software is delivered pursuant to a General Services Administration "GSA" contract, use, reproduction, or disclosure is subject to restrictions set forth in Contract No. GS-35F-05925.