

Philips 43BDL3550Q/00 Signage Display Interactive flat panel 108 cm (42.5") LED 400 cd/m² 4K Ultra HD Black Built-in processor Android 8.0

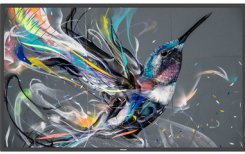
Brand : Philips

Product code: 43BDL3550Q/00

Product name : 43BDL3550Q/00

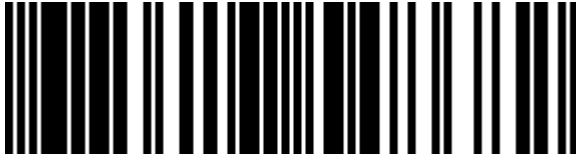
42.5", 3840 x 2160, 400 cd/m², DVI-D, 2x HDMI 2.0, 2x USB 2.0, VGA, Audio In/out, RJ45, VESA 200mm x 200mm, Android 8.0

Philips 43BDL3550Q/00. Product design: Interactive flat panel. Display diagonal: 108 cm (42.5"), Display technology: LED, Display resolution: 3840 x 2160 pixels, Display brightness: 400 cd/m², HD type: 4K Ultra HD. Operating system installed: Android 8.0. Product colour: Black

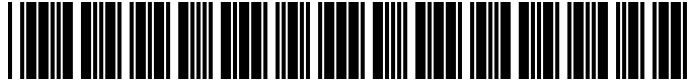


Display		Performance	
LED backlighting type	Direct-LED	Purpose *	Universal
Display diagonal *	108 cm (42.5")	On Screen Display (OSD)	✗
Display technology *	LED	On Screen Display (OSD) languages	Arabic, Simplified Chinese, Traditional Chinese, German, English, Spanish, French, Italian, Japanese, Polish, Russian, Turkish
Display resolution *	3840 x 2160 pixels		
Display brightness *	400 cd/m²		
HD type *	4K Ultra HD		
Touchscreen *	✗		
Native aspect ratio	16:9		
Response time	8 ms		
Contrast ratio (typical)	1300:1		
Contrast ratio (dynamic)	500000:1		
Viewing angle, horizontal	178°		
Viewing angle, vertical	178°		
Display number of colours	1.073 billion colours		
Pixel pitch	0.2451 x 0.2451 mm		
Display diagonal (metric)	108 cm		
Ports & interfaces			
HDMI ports quantity *	2		
HDMI version	2.0		
DVI port *	✓		
DVI-D ports quantity	1		
VGA (D-Sub) input ports	1		
USB port *	✓		
USB ports quantity	2		
Ethernet LAN *	✓		
Ethernet LAN (RJ-45) ports	1		
RS-232C	✓		
Remote (IR) input	1		
Remote (IR) output	1		
Audio			
Built-in speaker(s) *	✓		
Number of built-in speakers	2		
RMS rated power	20 W		
Design			
Product design *	Interactive flat panel		
Placement supported *	Indoor		
Orientation	Horizontal		
Product colour *	Black		
VESA mounting *	✓		
Panel mounting interface	200 x 200 mm		
Bezel width (bottom)	1.39 cm		
		Power	
		Power consumption (typical) *	108 W
		Power consumption (standby) *	0.5 W
		Energy efficiency class (SDR)	G
		Energy consumption (SDR) per 1000 hours	102 kWh
		AC input voltage	100 - 240 V
		AC input frequency	50 - 60 Hz
		Energy efficiency scale	A to G
		Computer system	
		Built-in processor *	✓
		Processor family	ARM Cortex
		Processor model	A53
		Processor frequency	1.1 GHz
		Internal storage capacity	2 GB
		Operating system installed	Android 8.0
		Video formats supported	H.263, H.264, H.265, MPEG, VP8
		Audio formats supported	AAC, HE-AAC
		Image formats supported	BMP, JPEG, PNG
		Weight & dimensions	
		Width	973 mm
		Depth	63.5 mm
		Height	561.2 mm
		Weight	11.3 kg
		Packaging content	
		Remote control included	✓
		Batteries included	✓
		Cables included	AC, HDMI, IR sensor, RS-232
		Operational conditions	
		Operating temperature (T-T)	0 - 40 °C
		Operating relative humidity (H-H)	20 - 80%
		Storage temperature (T-T)	-20 - 60 °C
		Storage relative humidity (H-H)	5 - 95%

Design		Certificates	
Bezel width (side)	1.39 cm	Certification	CB, BSMI, CU, EPA, ETL, FCC, Class A, VCCI
Bezel width (top)	1.39 cm		
Logistics data			
Harmonized System (HS) code		85285210	



0685417548682



685417548682



8712581765354

Disclaimer. The information published here (the "Information") is based on sources that can be considered reliable, typically the manufacturer, but this Information is provided "AS IS" and without guarantee of correctness or completeness. The Information is only indicative and can be changed at any time without notification. No rights can be based on the Information. Suppliers or aggregators of this Information do not accept any liability with regard to the content of (web)pages and other documents, including its Information. The publisher of the Information can not be held liable for the content of 3rd party websites that are linking this Information or are linked to from this Information. You as the User of the Information are solely responsible for the choice and usage of this Information. You are not entitled to transfer, copy or otherwise multiply or distribute the Information. You are obliged to follow the directions of the copyright owner(s) with regard to the use of the Information. Exclusively Dutch law is applicable. With regard to price and stock data on the site, the publisher followed a number of starting points, which are not necessarily relevant for your private or business circumstances. Therefore, the price and stock data are only indicative and are subject to changes. You are personally responsible for the way you use and apply this information. As a user of the Information or sites or documents in which this Information is included, you will adhere to standard fair use including avoidance of spamming, ripping, intellectual-property violations, privacy violations, and any other illegal activity.